



OUR **MISSION** IS TO PROVIDE  
A WELCOMING, INCLUSIVE,  
AND LOVING COMMUNITY BY  
PROCLAIMING AND LIVING GOD'S  
WORD THROUGH WORSHIP,  
EDUCATION, AND SOCIAL JUSTICE.

## SAINT THOMAS MORE PARISH

11822 Holmes Road, Kansas City, Missouri 64131 • [stmkc.com](http://stmkc.com)

February 4, 2024



### BULLETIN ONLINE

this and last week's at [stmkc.com](http://stmkc.com)

Subscribe at [stmkc.com/emailme](http://stmkc.com/emailme) →



### MASSSES

WEEKDAY: Mon & Fri 8:15am,  
Tues, Wed, Thu 6:15am & 8:15am  
First Sat 8:15am

WEEKEND: Sat 4pm, Sun, 7:30am, 9am & 11am

MASS ONLINE CONTINUES

### RECONCILIATION

Individual Confessions: by appointment and  
Tuesdays and Thursdays, 5-6pm  
Saturdays, 3-3:45pm and  
First Saturdays, 7:15-8am

### OUR CLERGY

Father Justin Hoye, Pastor

In Residence: Father Paul Sappington

### AT THE PARISH OFFICE

Office Hours:

Mon. & Wed. 8:45-1pm, 2-3:30pm\*

Tues. & Thurs. 8:45-1pm, 2-5pm\*

Friday 8:45-1pm

\* lunch hour 1-2pm

Parish Office 816-942-2492

Office directory at [stmkc.com](http://stmkc.com) and p.9

### AT THE SCHOOL OFFICE

Linda Crosthwait

Principal

Meredith Blair

Assistant Principal

Office hours: Mon.-Thurs., 8am-3:45pm;

Fri., 8:30am-3:30pm

School Office 816-942-5581

School fax 816-941-2450

School email directory at [stmkcschool.org](http://stmkcschool.org)

SCHOOL TOURS: contact Principal Linda Crosthwait at  
816-942-5581 or [crosthwait\\_linda@stmcydones.org](mailto:crosthwait_linda@stmcydones.org)

### SAFE ENVIRONMENT

All volunteers working with minors or  
vulnerable adults are required to:

- Attend a Protecting God's Children workshop
- Attend a mandated reporter training
- Submit to a background check
- Read the online Policy on Ethics and Integrity in Ministry

For more Safe Environment information,  
including reporting and victim resources,  
see page 10.



## 5<sup>TH</sup> SUNDAY IN ORDINARY TIME

When it was evening, after sunset, they brought to him all who were ill or possessed by demons. The whole town was gathered at the door. He cured many who were sick with various diseases, and he drove out many demons, not permitting them to speak because they knew him. - Mk 1:32-34

Excerpts from the Lectionary for Mass ©2001, 1998, 1970 CCD.

©LPI



Lent  
AT STM

see p.7



## THE PASTOR'S PEN

Faithful People of Saint Thomas More,

Thank you to all who have helped us celebrate Catholic Schools Week, and to those who will be joining us at this Saturday evening's (begins at 6PM) Annual Auction in Flanagan Hall. Those looking to contribute without attending are invited to make a contribution toward this year's Fund-a-Need project, helping to complete our carpet installation throughout the school, and provide an integrated phone system on campus.

Next Sunday, our Pastoral Associate, Peggy Lucas, will be soliciting feedback in the narthex (look for her table!) on the topic of "Caring for the Caregiver." There is growing recognition of the various strains that impact our mental health, and one such pressure point is those felt by caregivers, especially those who have stepped into the role with little to no preparation. This could involve care of an ill spouse, an aging parent, or a neighbor who lives alone and who we have become attentive towards. These caregivers - along with those professionally trained - can experience a weight of responsibility that can go unacknowledged, and thus unaddressed.

Connect with Peggy next Sunday if you have a story, insight, or topic that you think would be valuable as we explore how to minister to these quiet laborers.

We are a week and a half away from Lent, and we have numerous offerings to help parishioners engage in this season of reflection. A few highlights:

- + Daily Mass/Confession schedule expands for Lent
- + STM Mornings to serve Breakfast to the Homeless at Morning Glory Cafe
- + Sunday Morning Presentations on the Minor Prophets of Lent
- + Monday Evening Lenten Bible Study: "Discover the Story of Salvation," led by former FOCUS missionary, Hayley Shaver

See page 7 for a list of offerings.

Lastly, thank you to all those who participated in

our "Prayer for Art" show held throughout January. (And a special thanks to Joan and Bob Sandford and Donna Melgaard who helped frame and label all of these works, and Susan Smith and Rae Lynn Vittorino who helped check out the works and construct the displays for several weeks.) 94 prints went home this month.

Father Justin



## Come Home to Communion



### Daily Masses

Monday, 8:15am  
Tuesday, 6:15 & 8:15am  
Wednesday, 6:15 & 8:15am  
Thursday, 6:15 & 8:15am  
Friday, 8:15am  
First Saturday, 8:15am

**Weekend Masses:** Saturday, 4pm vigil Mass  
Sunday, 7:30am, 9am & 11am

**Sign Interpreted Mass:** 2nd Sundays at 11am  
**Masses are recorded daily;** find them at [stmkc.com](http://stmkc.com) or [youtube.stmkc.com](http://youtube.stmkc.com).

## Pray the Rosary with Others

### Sundays, after 9am Mass

Join with the Knights of Columbus in prayer.

### Monday-Friday, after the 8:15am Mass, Chapel

All are welcome to pray the rosary with others on Saturdays, after the 8:15am Mass. Fatima devotion is also celebrated on First Saturdays.

## The Light is on for You

Confessions are offered in the reconciliation room.

Tuesday, 5-6pm  
Thursday, 5-6pm  
Saturday, 3-3:45pm  
First Saturday, 7:15-8am  
and by appointment



## Church Hours for Private Prayer

Monday, 7am-6pm  
Tuesday, 6am-6pm  
Wednesday, 6am-6pm  
Thursday, 6am-6pm

Friday, 7am-6pm  
Saturday, 9am-5pm  
First Saturday, 7am-5pm  
Sunday, 7am-9pm

## Eucharistic Exposition at STM

### Sundays, Noon-9pm in the Church

Regular time spent with the Lord in Adoration can be life changing! First Sundays, Noon-1pm, has music.

**Go out of your way.** How can you make Adoration a regular part of your weekly rhythm of prayer? It may mean sacrificing other things, such as time online or watching TV. Start searching for more opportunities to sacrifice other things for that prayer time with Jesus--and watch how he blesses you.

## Fresh Fire Fridays

Feb. 23, Mar. 22, Apr. 19, May 10

Fresh Fire is a prayer experience crafted to open hearts to experience Jesus' real presence in the Eucharist by combining candlelit Eucharistic Adoration throughout, with praise and worship music, a speaker offering personal witness, and opportunities to come to the altar for a blessing and intercessory prayer.



## February Prayer Intentions

**Pope Francis:** We pray that those with a terminal illness, and their families, receive the necessary physical and spiritual care and accompaniment.

**Bishop Johnston:** For those who are discerning a call to the priesthood or consecrated religious life.

## National Eucharistic Revival Art Competition

Creative Catholics from all over the country are invited to share their talents and spread the beauty of our faith through art, particularly exploring the Eucharistic mystery and Eucharistic themes. First place will receive a cash prize of \$2000. Total awards will amount to over \$3000.

Selected works will be showcased at the 10th National Eucharistic Congress, exhibited in a premiere show at the Museum of Blessed Michael McGivney Center in Connecticut, and displayed at other locations as a part of the Eucharistic Sacred Art Exhibit. For more information, google National Eucharistic Art Competition.

## Care & Support

### Throat Blessing

**Saturday, February 3, after 8:15am Mass**

On this Feast Day of Saint Blaise, parishioners are invited to get their throats blessed after the morning Mass.

## Please hold in prayer

CONTACT THE PARISH OFFICE, BULLETIN@STMKC.COM OR 942-2492 X202, TO ADD OR REMOVE NAMES FROM THE PRAYER LIST. IF YOUR NAME IS DROPPED OFF AND YOU ARE IN NEED OF ADDITIONAL PRAYERS FOR HEALING, CONTACT THE PARISH OFFICE. **NAMES APPEAR EVERY OTHER WEEK.**

### ...our family and friends in the military:

Thomas Edwards  
Seth Gulsby

John Hylander  
Steve Janner

Sarah Katz  
Bobby Murphy

Brian Owara  
Alycia Pouch

Nathan Pouch  
John P. Sullivan

### ...our parishioners who are sick:

Tom Bauer  
Bill Cusick  
Beth Dierks

Christine Edmunds  
Mike Gaines  
Gene Grillot

Carol Haggerty  
Donna Johnson  
Larry LeFebvre

Mary Margaret Murry  
Susie Reardon  
Sam Snider

Ed Thomas  
Gafo Viserio  
Anita Wagner

### ...our family and friends who are sick:

Melissa Hanover Cassady  
Michael Dierks  
Kerry Hartzell

Kyle Hartzell  
Lynn Hoover  
Jerry Job

Julie Aguirre Johnson  
Noel Mehlo  
Debbie Nichols

Lawrence T. Rouen III  
Ron Simmons

Ava Smith  
Rachael Cassady Smith

### ...our family and friends who are hospitalized:

**Mid-America Rehab:** Larry LeFebvre  
**St. Luke's Plaza:** Mary LeFebvre

### ...our family and friends who have died:

Charles Moran

### Grief Peer Support Group

**1st Wed. (Feb. 7), 4-5pm, Bauman Room of More Hall**  
**3rd Wed. (Feb. 21), 6-7pm, in the Parish Office**

Grief is difficult and can be experienced as a result of any kind of loss. In addition to supporting each other, we use various resources to better understand our grief. Peggy Lucas, Pastoral Associate, facilitates these groups. Attend as you are able. For more info, contact her at [peggy@stmkc.com](mailto:peggy@stmkc.com) or 816-942-2492 x210.

### Gabriel Project Angel Training

**Saturday, February 10, 8:30am-4pm**

Gabriel Project is a shared ministry of the Diocese of Kansas City-St. Joseph Office of Life & Justice and the Archdiocese of KC KS Pro-Life Office. "Angels" are trained volunteers who listen to and support pregnant moms one-on-one. The training teaches the communication skills and what to expect as an Angel! Contact [gabrielprojectkc.com/volunteer/](http://gabrielprojectkc.com/volunteer/) to indicate your interest in attending.

### White Mass: Blessings upon Health Care Professionals

**Saturday, February 10, 10am**

The White Mass, so named by the color worn by those in the healing profession of medicine, gathers health care professionals under the patronage of Saint Luke to ask God's blessing upon the doctor, nurse, and caregiver alike. Health care professionals and their families are invited to attend this special Mass at the Cathedral of Saint Peter, 409 N 15th St, KC KS 66102.

### Caring for the Caregiver

**Sunday, February 11, in the Narthex**

In conjunction with World Day of the Sick on February 11, 2024, Pastoral Associate, Peggy Lucas, will provide an opportunity for parishioners to give ideas and feedback about an upcoming ministry, "Caring for the Caregiver," at Saint Thomas More. She will be welcoming ideas and feedback after the Masses on Sunday morning. Please look for the table in the narthex on February 11 so that we can better serve our community. You are also welcome to contact her directly at 816-942-2492 x210 or [peggy@stmkc.com](mailto:peggy@stmkc.com).

### Girl Scout Cookie Sales

**Sunday, February 11, in the Narthex**

Girl Scouts receive their cookie delivery on this week and will have their cookies available in the narthex after each of the weekend Masses. Cookies include the classic Trefoils (shortbread) and Thin Mints. There are seven more yummy delights! The cost is \$6/package and cash, checks and cards will be accepted.

### My House Workshop for Men - Diocesan Ministry

**February 22-24 (Thursday, 7am-Saturday, 3pm)**

My House is a confidential, intensive weekend for men striving to overcome and heal from unwanted sexual behaviors. It is geared to maximize your investment of time and money, as well as enhance any work you might have started or jump start your journey towards healing. The weekend will take place at Savior Pastoral Center, 12601 Parallel Pkwy, KC, KS 66109.



## SAINT THOMAS MORE PARISH Annual Stewardship

### STM Annual Stewardship

**Goal: 100% response rate! (\$3,500,000)**

\$1,829,219 was pledged as of 1/31/24

557 (39%) of households returned pledge forms

**Thank you** to the households who have returned their pledge forms! Additional forms are available on the dresser in the narthex or you can pledge online at [stmkc.com](http://stmkc.com).

### Diocesan Annual Catholic Appeal (ACA)

**Goal: 100% response rate**

As of 1/25/24 :

- 237 (17%) STM households pledged \$164,256
- Across the diocese 4,483 households pledged \$1,862,730 toward a \$2 million goal.

### Food Drive This Weekend

**February 4-5, in the Narthex**

Our monthly food drive helps people who are struggling to put food on their tables. Please bring the following items: canned tuna and meats, low-sodium canned soups and vegetables, pancake mix, syrup, sugar, dry milk, boxed meals, pasta and sauce, canned fruits, peanut butter, jelly, rice, jello, condiments, white beans, laundry soap, toiletry items, and paper goods. Monetary donations are also helpful!

### Needs of the Red Bridge Food Pantry:

canned chicken, various canned beans, dry beans (garbanzos in particular), jelly, toilet paper, boxed meals (Hamburger Helper type), laundry detergent (small bottles); canned: mixed veggies, peas, tomatoes

**To support Seton Center online,**

visit [setonkc.org](http://setonkc.org) and click on the donate tab.

## January Neighbors in Need Report

In January, STM helped nine families with rent and utility bills through our Neighbors in Need program, totaling \$3,717.28 in assistance. One person was a single mom unable to work while her 10-month-old baby was hospitalized due to illness. Another single mom has been unable to work because she is struggling to find resources for her autistic child. Several others got behind because of illnesses and were not paid while off work.

Thank you to all who contribute to the fund. STM couldn't provide assistance without your generous donations! While we have the honor of assisting these people and receiving their gratitude, please know that your generosity is greatly appreciated by the recipients.

**To make a contribution to this fund**, checks may be made payable to STM with "Neighbors in Need" in the memo line or you may go online, noting the correct purpose.

## December Financials

Regular - \$386,719.02	Plate - \$2,998.40
Facilities - \$2,342.00	
Education Fund - \$2,548.00	School - \$7,936.55
Neighbors in Need - \$6,795.82	
Holy Day - \$1,662.00	Christmas - \$11,802.75
Religious Retirement - \$7,792.00	

**Thank you** for your continued contributions!



## Green Team

### Blessing of Seeds

**Monday, February 5, 12:15pm Mass, at the Cathedral**

Seeds represent a microcosm of all life. By our prayer, we acknowledge God's

love for all creation and our responsibility to care for it. As planting season begins in late winter or early spring we the Church seek God's blessing on seeds, crops, and all creation.

Father Paul Turner will bless seeds at the Cathedral of the Immaculate Conception, 416 W 12th St, KCMO 64105. Seeds can be brought in person or sent with someone ahead of time. Especially invited are gardeners, farmers, greenhouse growers, and all who work with plants or seeds.

## Green Team Tip of the Week

When planning your weekly meals, choosing fresh foods is not only beneficial for your body, but also for the earth. We do not always think about it, but generally, a great deal of energy (and greenhouse gases) gets wasted in producing frozen meals and over-packaged foods. If you are used to buying prepared foods and

meals, why not try to make meals with fresh foods instead? Your body and the Earth will thank you! And what should we eat in the middle of winter when the vegetation is asleep? Be original by choosing more root vegetables (carrots, potatoes, turnip, etc.) in your recipes.



## SPRED Class

**Monday, February 5, 6:30-8:30pm in More Hall**

A group for the developmentally delayed meets about every other week to share their faith. Questions? Email Becky at bturner727@yahoo.com.

## Growing in Faith Together (G.I.F.T.)

**Tuesdays, 9-10:30am in the Bauman Library**

G.I.F.T. is a group of ladies that meets after 8:15am Mass most every Tuesday. We read the gospel and talk about its meaning in our lives. If you are interested, please call Becky Turner at 816-550-3655.

## Considering becoming Catholic or want to know more?

**Tuesdays, 6:15-7:30pm in More Hall A**

Journey with other individuals to learn more about the Catholic Church and to discern God's invitations offered through the Catholic Church. Sessions are open to adults and children, baptized and not. Questions? Contact Father Justin, frjhoye@stmkc.com or 816-942-2492 x204.

**Feb. 6:** Sacraments of Healing: Anointing of the Sick

## School of Religion

**Wednesdays, 6:15-7:30pm in More Hall**

School of Religion provides catechesis for grade school children who do not attend Catholic school. An online registration form can be found at stmkc.com/sor. Questions? Email Susan at aquiel2000@yahoo.com.

## Introduction to the First Five Old Testament Books

**Thursday, February 8, 6pm in More Hall - Last class**

STM parishioner Yvonne Teeple is leading a study of the Pentateuch, the first five books of the Bible, before Lent. For more information or to let Yvonne know you are coming, contact her at 913-271-1222. Walk-ins are welcome, too!





# Together, we can meet their need

## 2024 Catholic Charities Emergency Assistance Fund

### Second Collection February 17-18, 2024



CCEAF - Learn more



SCAN TO DONATE

assistance@ccharities.com

St. Joseph Office  
1123 S 10th St.  
St. Joseph, MO 64503  
816.232.2885

Kansas City Office  
4001 Dr. Martin Luther King Jr. Blvd. #250  
Kansas City, MO 64130  
816.221.4377

# Lent AT STM 2024

## Worship & Sacraments

### ASH WEDNESDAY MASSES

6:15am & 8:15am, 6pm.

### DAILY MASSES DURING LENT

...will return to both 6:15am & 8:15am, Monday-Friday. 8:15am Mass will be offered every Saturday.

### HOLY THURSDAY

7pm Mass of the Lord's Supper  
Adoration until 10pm

### GOOD FRIDAY

Noon: The 7 Last Words of Christ  
7pm Evening service

### HOLY SATURDAY

8pm Easter Vigil

### EASTER SUNDAY

7:30, 9 & 11am Masses

### SIGN INTERPRETERS

11am Palm Sunday Mass, Holy Thursday and Good Friday evening services.

### CONFESSION TIMES DURING LENT

Tuesdays & Thursdays, 5-6pm (Not Thu., March 21)  
Saturdays, 7:15-8am and 3-3:45pm

### LENTEN ART PARTICIPATION PROJECT

The Art & Environment Committee invites people to bring twigs, no longer than six inches, to add to a display on the round table in the narthex. People are invited to add the twigs themselves, to unite their own slivers of crosses to those of Jesus. Begins Ash Wednesday (NOT before!) and runs through Lent.

### FRESH FIRE (Fridays)

February 23 and March 22.

## STATIONS OF THE CROSS

5pm on Fridays, led by:

2/16 - STM Knights of Columbus

2/23 - Monday Rosary Group

3/1 - Kathy Thomas' 4th Grade Class

3/8 - Mary Roach & friends of former Saint Catherine

3/15 - Women of STM

3/22 - SPRED

## Outreach & Fellowship

### \$20 FOR LENT: [STMKC.COM/20FORLENT](http://stmkc.com/20forlent)

#### LITTLE SISTERS OF THE POOR

Each household is invited to contribute \$20 to this year's recipient is Little Sisters of the Poor. They are an international congregation of Roman Catholic women religious, with a local center in KCMO. They were founded in 1839 by Saint Jeanne Jugan to serve the elderly poor. The last time STM took up a collection for the Little Sisters was 2018. For more information on this mission, please visit [littlesistersofthepoorkansascity.org/](http://littlesistersofthepoorkansascity.org/). Envelopes will be available in the pews.

#### BABY SHOWER

The Respect Life Committee will collect baby items and monetary contributions to support the moms and babies at Saint Mary's Home for Unwed Mothers in Liberty, MO. A wish list will be available next week and items will be collected Ash Wednesday through Sunday, February 25.

#### FISH FRY FRIDAYS

will be held every Friday of Lent, 5-7pm, except on March 15. These are sponsored by the Scouts to help pay for summer camp. Dine in or get to-go! Menu: Baked and fried fish, potatoes, corn, green beans, rolls. Cheese pizza available for the kids. Cost: \$10/senior, \$12/adult, \$35/family. Desserts: \$1-2, provided by Girl Scouts.

#### SERVE BREAKFAST AT MORNING GLORY

- Ten volunteers are needed on each of the Mondays in March, 6:30-8:30am at The Catholic Center. Contact Father Justin to sign up: [frjhoye@stmkc.com](mailto:frjhoye@stmkc.com).

**COLLECTIONS** - Three second collections take place during Lent:  
Catholic Charities Emergency Assistance Fund (February 18),  
Catholic Relief Services (March 10)  
For the Holy Land (Good Friday, March 29).

## Formation Offerings

*Additional details will be provided in future bulletins.*

### BIBLE STUDY: DISCOVER THE STORY OF

**SALVATION** - Mondays, 6-7:30pm, in More Hall; a video/discussion series facilitated by Hayley Shaver, Coordinator of Evangelization & Discipleship

### OVERVIEW OF THE MINOR PROPHETS

First four Sundays of Lent, 10:05-10:50am, in More Hall; presentation by Father Justin

### SAINT TERESA: NO GREATER LOVE

**MOVIE SHOWING** - Sunday, March 10, 2pm, in More Hall. Sponsored by STM Knights of Columbus (Movie is almost two hours long.)

### WORLD APOSTOLATE OF FATIMA PRESENTATION

Sunday, March 17, 2pm, in More Hall; presentation by David Carollo, CEO of World Apostolate of Fatima

**LENTEN-THEMED CARE NOTES**, found on the north side of the narthex, including:

- A Lenten Journey Through Grief
- Longing for God - The Grace of Lent
- 40 Ways to Enrich Your Lenten Prayer
- The Season of Lent: From Ashes to Easter
- Lent - A Time to Pray for Others
- Praying the Bible During Lent

**LENTEN-THEMED LIGHTHOUSE CD'S AND BOOKS**, also found on the north side of the narthex, including:

- The Woman at the Foot of the Cross (CD)
- Family & Prayer Life During Lent (CD)
- The Imitation of Christ (Book)

## School of Love Date Night

**Next Event: Tuesday, February 13, 6:30-7:45pm**

Date Night is School of Love's FREE, beloved, quarterly, city-wide event in KC. See why hundreds of married couples of all ages have attended & re-attended this beloved event for over a decade. It's a low-key but classy, fun but important gift for your marriage. We buy the appetizers; you buy your drinks. Engaged couples through long-married welcome. Babies under 1 welcome. We hope you can make it!

We start your date with happy hour, appetizers, & a brief talk on faith, marriage, family... You finish your date at home or out on the town! The next event is a Valentine's Day/Mardi Gras Brewery Hop in Shawnee.

## Eucharistic Marian Conference

**February 16-18 (Friday-Sunday)**

As Pope John Paul II said, "The holy family is the beginning of countless other holy families. The history of mankind, the history of Salvation, passes by the way of the family." Saint Mary's Catholic Church (Pastor: Father Kendall Ketterlin) will host this conference. The church is located at 600 N Liberty St, Independence MO 64050.

Please register for this event: St Mary's office at 816-252-0121 or email [smoffice@saintmarysparish.org](mailto:smoffice@saintmarysparish.org).

## Worldwide Marriage Encounter (WWME)

**Next Date: February 16-18**

This Valentine's Day give your spouse the greatest gift of all, your time and attention! A WWME will allow you the time to reconnect and reaffirm your love for each other. It is a gift that will last all the days of your lives. For information or to apply for an experience, please visit [wwme4yourandme.org](http://wwme4yourandme.org) or contact Margaret Harris at [margaretil.harris@gmail.com](mailto:margaretil.harris@gmail.com) or call 405-206-1600.

## City On A Hill (COAH) Young Adult Events

Visit [kansascityonahill.org/](http://kansascityonahill.org/) for more info. Click on Get Involved to sign up for The Loop, a weekly email.

### KC Underground

Thursday, February 15, 7-9pm, Coronation of Our Lady

### Guatemala Trip: July 20-26 (Saturday-Friday)

Info Session: Wednesday, February 21, 6-7pm

### Undivided Retreat

March 8-10 (Friday-Sunday)

### Band of Brothers & Sisterhood Meet & Greet

Monday, January 29, 6:30-9pm

### Connect KC Events

COAH's initiative, ConnectKC, serves to gather young adults all around Kansas City to enjoy a variety of different activities. Please RSVP for any (or all!) of them! Email [staff@kansascityonahill.org](mailto:staff@kansascityonahill.org)

- Tuesday, February 6: Coffee Tour
- Wednesday, February 7: Catholic Foodies
- Saturday, February 10: Super Smash Down

## Safe Environment

### Protecting God's Children Training:

**Thu., Feb. 22; Tue., Apr. 9; Wed., Jun. 19, 6-9pm**

Adults who work with minors are required to attend in-person or Zoom Protecting God's Children Workshops. Three workshops have been set up to be held in More Hall! To register for any of these, set up an account on [virtus.org](http://virtus.org). Other requirements, accessed through Virtus, are listed on the front cover of this bulletin.

## Parish Calendar of Events

Thu., Feb. 1 - Old Testament Intro, 6pm, Parish Office

Knights' Leader mtg., 7pm, Bauman Room

Sat., Feb. 3 - Throat Blessing after 8:15am Mass

Sat.-Sun., Feb. 3-4 - Monthly Food Drive

Mon., Feb. 5 - STM serves at One City Cafe

Living Waters, 7-10pm

Tue., Feb. 6 - G.I.F.T., 9-10:30am, Bauman Room

OCIA, 6:15-7:30pm, More Hall A

Wed., Feb. 7 - Peer Grief Support Group, 4-5pm

School of Religion, 6:15-7:30pm

Choir Rehearsal, 7-8:30pm, Choir Loft

Thu., Feb. 8 - Old Testament Intro, 6pm, More Hall

Knights of Columbus, 7:15pm, Bauman Room

Mon., Feb. 12 - Green Team mtg., 6:30pm

Living Waters, 7-10pm

Tue., Feb. 13 - G.I.F.T., 9-10:30am, Bauman Room

OCIA, 6:15-7:30pm, More Hall A

Wed., Feb. 14 - **Ash Wednesday**

Parish Masses at 6:15am, 8:15am & 6pm

Choir Rehearsal, 7pm, Choir Loft

Fri., Feb. 16 - Stations of the Cross, 5pm, Church

Fish Fry, 5-7pm, More Hall

Sun., Feb. 18 - 1st Sunday of Lent

Catholic Charities Emergency Assistance Appeal

Overview of Minor Prophets, 10:05-10:50am

Mon., Feb. 19 - President's Day

Parish Office closed

Salvation History, 6-7:30pm, More Hall

SPRED Class, 6:30-8:30pm, More Hall

Living Waters, 7-10pm

## STM School

Linda Crosthwait, Principal

816-942-5581 [STMKC.COM/SCHOOL](http://STMKC.COM/SCHOOL)



### Office Hours

Mon.-Thurs., 8am-3:45pm; Fri., 8:30am-3:30pm



## STM School Dates to Note

Fri., Feb. 2 - 12:30pm dismissal (Auction set-up)  
 Sat., Feb. 3 - Auction  
 Mon., Feb. 5 - No School (Auction clean-up)  
 Sat., Feb. 10 - Father/Daughter Dance  
 Tue., Feb. 13 - Valentine's Day parties  
 Wed., Feb. 14 - Ash Wednesday Mass, 2pm

## Dine Out Night

### Thursday, February 8

Head on down to Big Belly's and let them know you are with STM!

## STM-for-All Father/Daughter Dance

### Saturday, February 10, 6:30-8pm, Flanagan Hall

\$25 per father/daughter (\$10 each additional daughter). Cash or Venmo.

## STM Boys Volleyball - Registration is open now!

To sign up 4th-8th grade boys for volleyball, please go to [PLKC.org](http://PLKC.org) and click on the register now link. The season is short, running March 18-May 17. With Missouri High schools making boys volleyball an MSHSAA activity (a letter sport) and Kansas schools not far behind, this is a great opportunity to get your boys started in this growing sport.

Please sign up soon to allow time for evaluations, if needed, and to secure coaches. Volunteer coaches are needed for grades 4-5! Email [jkalbsmith@gmail.com](mailto:jkalbsmith@gmail.com) if interested.

## PLKC Girls Flag Football: Grades 3rd-8th

Visit [cyojwa.org/current-programs](http://cyojwa.org/current-programs) to sign up 3rd-8th grade girls. The season runs March 4-May 18.

For more information on the program please visit [cyojwa.org/content/29293/Football-Girls-Flag](http://cyojwa.org/content/29293/Football-Girls-Flag).



### STM Auction Fund-a-Need

It's not too late to contribute!  
 Goal: \$200,000



## Parish Office Staff



Sharon Arnett  
 Liturgy Coordinator  
 x208 [sharon@stmkc.com](mailto:sharon@stmkc.com)



Peggy Lucas  
 Pastoral Associate/Outreach  
 x210 [peggy@stmkc.com](mailto:peggy@stmkc.com)



Mary Begnaud  
 Receptionist  
 x201 [mary@stmkc.com](mailto:mary@stmkc.com)



Father Christian Malewski  
 Sacramental Minister  
 x203 [cmalewski@olog.org](mailto:cmalewski@olog.org)



Scott Dulle  
 Building & Grounds Director  
[dulle\\_scott@stmcydones.org](mailto:dulle_scott@stmcydones.org)



Bob Sandford  
 Publications & Music Director  
 x212 [bob@stmkc.com](mailto:bob@stmkc.com)



Father Justin Hoyer  
 Pastor  
 x204 [frjhoye@stmkc.com](mailto:frjhoye@stmkc.com)



Joan Sandford  
 Office Manager  
 x202 [joan@stmkc.com](mailto:joan@stmkc.com)



Becky Johnson  
 Finance Coordinator  
 x224 [becky@stmkc.com](mailto:becky@stmkc.com)



Father Paul Sappington  
 In Residence  
[frsappington@smacatholic.org](mailto:frsappington@smacatholic.org)



Judy Kashka  
 Funeral & Wedding Liturgist  
[judy@stmkc.com](mailto:judy@stmkc.com)



Hayley Shaver  
 Evangelization & Discipleship  
 x223 [hayley@stmkc.com](mailto:hayley@stmkc.com)



Tim Waris  
 Business Manager  
 x218 [tim@stmkc.com](mailto:tim@stmkc.com)

## Parish Office Hours (until further notice)

Office Hours: M-W 8:45am-3:30pm; T-Th 8:45am-5pm  
 F 8:45am-1pm

## Finance Ministry Team

Justin Hicks, Chair  
 Mark Meierhoffer  
 Bruce Gregg

Stefanie Bresette  
 Laura Christopherson

*Parishioner volunteers serve for three-year terms.*  
 Questions? Email [FinanceCouncil@stmkc.com](mailto:FinanceCouncil@stmkc.com).



### Diocesan Ombudsman

Joe Crayon [crayon@ombudsmankcsj.org](mailto:crayon@ombudsmankcsj.org) or  
 816-812-2500

## To register as a member of Saint Thomas More Parish...

...go to [stmkc.com/registration](http://stmkc.com/registration), contact the parish office or pick up a registration form on the Information table in the church narthex.

## Safe Environment Information

The Diocese of Kansas City~Saint Joseph is committed to combatting sexual abuse in the Church. If you are a victim of sexual abuse, or if you *observe or suspect* sexual abuse:

- Call the **MO Child Abuse Hotline**, 1-800-392-3738 (if the victim is currently under the age of 18), or **KS Protection Report Center**, 1-800-922-5330, and
- Contact your **local law enforcement agency** or call 911, and
- After reporting to these civil and law enforcement authorities, report suspected *sexual abuse of a minor or vulnerable adult* to the **Diocesan Ombudsman, Joe Crayon**, at [crayon@ombudsmankcsj.org](mailto:crayon@ombudsmankcsj.org) or 816-812-2500 if the abuse involves a priest, deacon, employee or volunteer of the Diocese of Kansas City~Saint Joseph.

The diocese has a sincere commitment to providing care and healing resources to victims of sexual abuse and their families. Please contact Whitney True-Francis, the **Victim Advocate** at [victimadvocate@diocesekcsj.org](mailto:victimadvocate@diocesekcsj.org) or 816-392-0011 for more information.

**FOR ADDITIONAL INFORMATION**, contact:

**Joan Sandford**, Parish Safe Environment Coordinator, [safety@stmkc.com](mailto:safety@stmkc.com) or 942-2492 x202, OR

**Meredith Blair**, School Safe Environment Coordinator, [blair\\_meredith@stmcyclones.org](mailto:blair_meredith@stmcyclones.org) or 942-5581.

## Mass Intentions

Mon: **8:15AM Edward Lee Baty Jr<sup>†</sup>**  
2/5  
Tues: **6:15AM James Hess<sup>†</sup>**  
2/6 8:15AM Mike McNamara<sup>†</sup>  
Wed: **6:15AM Andre Gonzalez<sup>†</sup>**  
2/7 **\*\*8:15AM Margaret Cisper<sup>†</sup>**  
Thur: **6:15AM Dorian Kruger<sup>†</sup>**  
2/8 8:15AM Rosemary Schoener<sup>†</sup>  
Fri: **8:15AM Bernard Katzer<sup>†</sup>**  
2/9  
Sat: 4:00PM Roger Katzer<sup>†</sup>  
2/10  
Sun: **7:30AM Mary Kate Hughes<sup>†</sup>**  
2/11 9:00AM Our Parishioners  
**11:00AM Mark Kulathinkal<sup>†</sup>**

<sup>†</sup> Deceased

**\*\*School Mass**

**To request a Mass intention, stop by the parish office or call 816-942-2492. Suggested donation per Mass is \$10.**

### SCRIPTURE READINGS

For the daily readings, visit [usccb.org/bible/reading](http://usccb.org/bible/reading). Have the readings sent to your email each day, hear the readings read to you, or watch a video with a reflection based on the readings.



TJ BRENNAN- *Parishioner*

816.394.2224

tjbrennan@cekinsurance.com

www.cekinsurance.com

## LET'S GROW YOUR BUSINESS

Place Your Ad Here  
and Support Our Parish!

**CONTACT ME**  
**Jon Becker**

jbecker@4LPi.com  
(800) 950-9952 x2536



7735 Wornall • 816.523.4566  
Steve and Aimee Gromowsky  
Sam and Mary Gromowsky

### SHORT STAFFED?

Place an ad here to find new  
local talent for your business.



CALL 800-950-9952

The Genuine. The Original.



Overhead Door Company of Kansas City™  
A **OH PACE** Company

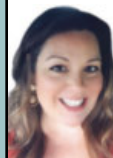
REPAIR + REPLACE GARAGE  
DOORS AND OPENERS  
RESIDENTIAL DOORS

**FREE ESTIMATES**

913-361-6023  
OverheadDoorKansasCity.com



SERVING KANSAS CITY **SINCE 1927**



**BALTHAZOR**  
**PHOMES**  
shellyb@reecenichols.com

**Shelly Balthazor**

Real Estate Specialist, Parishioner

816-591-5277

shellyb@reecenichols.com

**THE ROBE** **ELLERMAN**  
**ReeceNichols** *Team*

\*1 Real Estate Team in MO & KS

\*1 KC Real Estate Team in Homes Sold

\*1 in Sales Volume

\*3 Nationally Ranked Team in the US

\*740+ Million in Sales Volume in 2021

**SUPPORT OUR  
ADVERTISERS!**

**DOES YOUR NONPROFIT  
ORGANIZATION NEED  
A NEWSLETTER?**

Engaging, ad-supported  
print and digital newsletters  
to reach your community.

Visit [lpicomunities.com](http://lpicomunities.com)

**OUR COMMU**  
**NEWSLETTE**  
OUTDOOR EDITION



Scan to  
contact us!



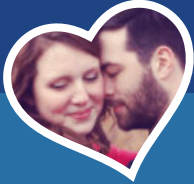
For ad info. call 1-800-950-9952 • [www.4lpi.com](http://www.4lpi.com)

St. Thomas More, Kansas City, MO

C 4C 02-0710



**catholicmatch®**  
Missouri



CatholicMatch.com/MO



*A Fresh and Polished Approach to Oral Health*

4851 WEST 134TH STREET • LEAWOOD • KANSAS 66209-7803  
913.681.8300 • WWW.JEFFTHOMPSONORTHODONTO.COM

JEFFREY J. THOMPSON, D.D.S., M.S.  
DIPLOMATE AMERICAN BOARD OF ORTHODONTICS



# WALK-IN CLINIC

for sports injury or fractures

M-F: 9am -11am, 1pm - 3pm. Ages 0 -16

**pediatric orthopaedic  
surgery Associates**

5250 W. 94th Terrace, Prairie Village, KS 66207

**913-451-0000**

www.pedorthokc.com

*Like a good neighbor* **State Farm**  
*State Farm is there.®*



13012 Fuller  
P.O. Box 230  
Grandview, MO 64030

STATE FARM INSURANCE COMPANIES  
HOME OFFICES BLOOMINGTON, ILLINOIS

**Larry B. Langford,**  
CLU CHFC

Bus.: 816-761-8711  
Res.: 816 217 8112

larry.langford.b5u9@statefarm.com



**Tina R. Gaughan**  
REALTOR®, SRES

**RE/MAX®**

State Line Real Estate



Direct Line: (913) 312-3630

Mobile: (816) 835-3230

TinaGaughan@gmail.com

TinaGaughan.com

11251 Nall Ave. • Leawood, KS 66211



Full Service For All Your Needs  
816-444-7440

9237 Ward Parkway, Ste 114

www.catholicfamilycu.com

Savings Insured by the NCUA up to \$250,000



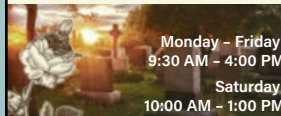
816-737-0601 / 913-244-6046  
www.CornerstoneWindowsKC.com



6842 Troost Ave  
Kansas City, MO 64131

**816-333-0075**

kcmmonument1888@outlook.com



Monday - Friday:

9:30 AM - 4:00 PM

Saturday:

10:00 AM - 1:00 PM

**learn.  
grow.  
soar.**

**FORMING MEN AT  
THE ROCK**  
ROCKHURST HIGH SCHOOL

WWW.ROCKHURSTHS.EDU/ADMISSIONS



**PILEGGI PAINTING**

Exterior - Interior - Decks - Residential & Commercial

**Frank Pileggi - Owner**

www.PileggiPainting.com

frank@pileggipainting.com | 913-558-5204

**ADT-Monitored Home Security**

Get 24-Hour Protection From a Name You Can Trust

- Burglary
- Flood Detection
- Fire Safety
- Carbon Monoxide



Authorized  
Provider

**SafeStreets**

**833-287-3502**



**AVAILABLE now**  
at <https://www.johnrdougherty.com>

**HOLY TERROR**  
John R. Dougherty



—A must-read book

—Thrilling  
supernatural crime  
story

—Classic tale of  
good vs. evil

—5-star rated

Support local  
authors



Cure of Ars  
parishioner John  
Dougherty

**IF YOU LIVE ALONE**

**MDMedAlert!™** As Low As

✓ Ambulance ✓ Police/Fire

✓ Family/Friends ✓ GPS & Fall Alert

**CALL NOW 800.808.9294**

**\$19<sup>95</sup>**  
/mo.

md-medalert.com



**CottageCare®**  
HOUSE CLEANING AT ITS BEST!

For Pricing call (913) 469-0220  
or visit [cottagecare.com](http://cottagecare.com)



**JD & Jakes**  
**THE BARBER SHOP**

(816) 569.2887 (cuts)  
13033 Holmes Rd.



(816) 942-0990 | 13037 Holmes Rd.



For ad info. call 1-800-950-9952 • [www.4pi.com](http://www.4pi.com)

St. Thomas More, Kansas City, MO

B 4C 02-0710





KC's Leading Decking & Andersen Window Supplier

Mike McGlinn  
Parishioner

816-331-2211

OwenLumber.com

Muehlebach Funeral Care & Cremation Services



MUEHLEBACH  
FUNERAL CARE

Parishioners:  
Steve & Nicole Pierce

Jordan Pierce  
STM Class of 2011

Jenny Mertes

Tom Reagan

816-444-2060

www.muehlebachchapel.com

"Our Family Dedicated to Serving Yours."

WE APPRECIATE OUR  
ADVERTISERS!



Your financial partner throughout your life.

Matthew Pomianek, AAMS®, Financial Advisor, Parishioner  
5000 W 95th St Ste 103  
Prairie Village, KS 66207  
913-648-6084  
matthew.pomianek@edwardjones.com

Member SIPC

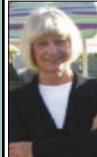
Edward Jones  
MAKING SENSE OF INVESTING

Eckhard Preuss  
Agent

8009 E. 171st Box 645  
Belton, MO 64012-0645  
Bus 816.331.4288 Fax 816.331.2907  
eckhard.preuss.b5xr@statefarm.com



Better Homes  
KANSAS CITY  
HOMES  
REAL ESTATE



Judy Sheaman, ABR

Sales Executive  
with 26 Yrs. Experience

Parishioner

Licensed in Kansas & Missouri

Office: 913-981-2827  
Cell: 816-304-2888  
KC Magazine

"Five Star Real Estate Agent"  
for overall customer satisfaction since 2005

Carpets | Area Rugs | Upholstery  
Hardwood Floors | Air Ducts  
Tile & Grout | Residential/Commercial  
WE CLEAN GREEN | zerorez  
(816) 425-3655  
www.zerorezkc.com Steven Phelps

LET'S GROW YOUR BUSINESS

Place Your Ad Here and Support Our Parish!

CONTACT ME Jon Becker

jbecker@4LPi.com • (800) 950-9952 x2536

ALLIED  
CONCRETE  
PRODUCTS

RESIDENTIAL  
SEWAGE  
TREATMENT  
COMPANY, INC.

12800 2nd St. Grandview  
816-966-8836 816-966-8885  
Judy, Pete, & Amparo Furey  
Parishioners Kathy Maguire & Tom Fritts  
Parishioners



Part-time  
Child Care Jobs  
Now Hiring!

Apply at: [kclinc.org/parttimejobs](http://kclinc.org/parttimejobs)

LINC Caring Communities Sites  
North Kansas City - Kansas City Public Schools  
Center - Hickman Mills - Grandview

Place Your Ad Here and  
Support our Parish!

Instantly create and  
purchase an ad with

AD  
CREATOR  
STUDIO



4lpi.com/adcreator

MCGILLEY  
MEMORIAL CHAPELS  
SINCE 1899

Funerals | Cremations | Receptions | Celebrations

"Celebrating Lives"

Patrick McGilley | Joe Haster | 816-942-6180 | [www.mcgilleystatelinechapel.com](http://www.mcgilleystatelinechapel.com)

SUPPORT OUR  
ADVERTISERS!

ACCESS YOUR POTENTIAL

AVILA  
UNIVERSITY

Avila.edu/catholic

FOUR WAY PLUMBING  
SERVICE & DRAIN CLEANING  
Same Location since 1979

816-331-1650

Nick & Marion Biondo, Jr. Master Plumbers



Malachy Connor  
Landscape Designer

913-515-4166

[MALACHY@CONNORLANDSCAPING.COM](http://MALACHY@CONNORLANDSCAPING.COM)



John Sweeney CCIM  
Reece Commercial  
Commercial Real Estate  
(913) 945-3718 (913) 461-6326 mobile  
John@ReeceCommercial.com  
Brokerage Investment Development Consulting

BURIAL • ENTOMBMENT • CREMATION • TRADITIONAL CEREMONIES • CELEBRATIONS OF LIFE

CULLEN  
FUNERAL HOME, INC.®



612 W Foxwood Dr  
Raymore, MO 64083  
(816) 322-5278

Auto • Home • Life • Commercial

NESTEL  
INSURANCE AGENCY  
"Where Customer Service Counts"

We are an Independent Agency  
With Over 30 Years of Experience

9233 Ward Parkway Ste 124  
Kansas City, MO 64114

Office:  
816-361-6442

info@nestelinsurance.com  
www.nestelinsurance.com



PARISHIONER OWNED  
JOE & MAGGIE TULIPANA

SHAWNEE  
13214 W 62ND TERR, SHAWNEE, KS 66216

VILLAGE WEST (INSIDE NEBRASKA FURNITURE MART)  
1601 VILLAGE WEST PKWY, KANSAS CITY, KS 66111

WE CATER! 913.268.488Q  
catering@blindboxbbq.com

BLIND  
BOX  
BBQ

[BLINDBOXBBQ.COM](http://BLINDBOXBBQ.COM)



For ad info. call 1-800-950-9952 • [www.4lpi.com](http://www.4lpi.com)

St. Thomas More, Kansas City, MO

A 4C 02-0710