



OUR **MISSION** IS TO PROVIDE  
A WELCOMING, INCLUSIVE,  
AND LOVING COMMUNITY BY  
PROCLAIMING AND LIVING GOD'S  
WORD THROUGH WORSHIP,  
EDUCATION, AND SOCIAL JUSTICE.

## SAINT THOMAS MORE PARISH

11822 Holmes Road, Kansas City, Missouri 64131 • [stmkc.com](http://stmkc.com)

February 11, 2024



### BULLETIN ONLINE

this and last week's at [stmkc.com](http://stmkc.com)

Subscribe at [stmkc.com/emailme](mailto:stmkc.com/emailme) →



### MASSES

WEEKDAY: Mon-Fri 6:15am & 8:15am

Sat 8:15am

WEEKEND: Sat 4pm, Sun, 7:30am, 9am & 11am

MASS ONLINE CONTINUES

### RECONCILIATION

Individual Confessions: by appointment and  
Tuesdays and Thursdays, 5-6pm

Saturdays, 7:15-8am and 3-3:45pm

### OUR CLERGY

Father Justin Hoye, Pastor

In Residence: Father Paul Sappington

### AT THE PARISH OFFICE

Office Hours:

Mon. & Wed. 8:45-1pm, 2-3:30pm\*

Tues. & Thurs. 8:45-1pm, 2-5pm\*

Friday 8:45-1pm

\* lunch hour 1-2pm

Parish Office 816-942-2492

Office directory at [stmkc.com](http://stmkc.com) and p.9

### AT THE SCHOOL OFFICE

Linda Crosthwait

Principal

Meredith Blair

Assistant Principal

Office hours: Mon.-Thurs., 8am-3:45pm;

Fri., 8:30am-3:30pm

School Office 816-942-5581

School fax 816-941-2450

School email directory at [stmkcschool.org](mailto:stmkcschool.org)

SCHOOL TOURS: contact Principal Linda Crosthwait at  
816-942-5581 or [crosthwait\\_linda@stmcydones.org](mailto:crosthwait_linda@stmcydones.org)



THE REPENTANT MAGDALENE - JAMES TISSOT

# Ash Wednesday

February 14

Masses at

6:15am

8:15am

6pm

### SAFE ENVIRONMENT

All volunteers working with minors or  
vulnerable adults are required to:

- Attend a Protecting God's Children workshop
- Attend a mandated reporter training
- Submit to a background check
- Read the online Policy on Ethics and Integrity in Ministry

For more Safe Environment information,  
including reporting and victim resources,  
see page 10.

*Plant the seed of hope*

## CCEAF

### Catholic Charities Emergency Assistance Fund

Collection next weekend

see p.6



view the video



Faithful People of Saint Thomas More,

Lent begins this week, and the parish has a wide variety of offerings that help us enter more deeply into the life of Christ. As I mention annually when we enter into this season, the goal is not to participate in everything, but to intentionally choose (and commit) to those engagements to which we feel called. Invitations to "die to ourselves" postures us to be raised by the work of God to new heights. May none of us shirk from the invitations to sacrifice this Lent.

Among the Lenten offerings that start this week:  
+ \$20 for Lent envelopes are in the pews beginning Ash Wednesday, asking parishioners to make a \$20 donation to a specific entity. This year, \$20 for Lent proceeds benefit the Little Sisters of the Poor, who operate a home for the elderly here in south Kansas City.

+ A Baby Shower for Mary's Home for Mothers, sponsored by our Respect Life Committee. Beginning Ash Wednesday through the second Sunday of Lent, baby shower items can be brought to the playpen in the narthex. See page 6 for a list of items sought.

+ Friday Stations of the Cross (5PM) and Fish Fry (5-7PM)

+ 4 Week Series on the Minor Prophets of Lent (led by me), between the 9AM and 11AM Masses in More Hall.

+ Annual Second Collection for Catholic Charities, the First Sunday of Lent

Next Saturday, catechumens (not-yet-baptized) and candidates (those baptized in another Christian tradition) who are discerning entrance into the Catholic Church will celebrate the Rite of Election at the Cathedral. With the start of Lent, we'll begin praying with increased focus for these men and women journeying at STM.

Father Justin

P.S. As a reminder:

**Ash Wednesday and Fridays of Lent:** Obligatory day of Abstinence from meat (Obligatory from **age 14 onward**)

**Ash Wednesday & Good Friday:** Obligatory Days of Fasting (obligatory for those **aged 18 until age 59**, meaning one full meal permitted, and two smaller meals that together do not equal a full meal).

## To those who made last weekend's auction possible:

Jenny and Mike Smith & Lauryn and Pat Haake, Co-Chairs

Jaqui Haskins, Jeni Dobbler, Andrea Moore, Kait Tiehen, Chelsea Mura, Ann Smith, Virginia Stanton, Nichole Ismert, Becca Allen, Christen Dusselier, Lisa Hain, Laura Ismert, Sheila Cucar and Jessica Nickle, who handled Acquisitions

Pat Haake, Jenny Smith, Linda Crosthwait, Meredith Blair and Tim Waris, tasked with our Fund-a-Need

Mike Smith, Finances

Sheila and Chris Cucar, who solicited Underwriters for our event

Annie Haake, who oversaw our Bid Book and Invitations

Liz and Jay Roberts, Chairs for Reservations

Colleen Teasdale and Ken Van Pelt, who collaborated with our students for Class Art Projects

Katie Raccuglia, who chaired our Class Projects

Lauryn Haake, our Decorations Chair

Liz Roberts who handled our Tickets and Tables

Jessica and Jimmy Nickle, Chairs of Food & Beverages

Brian Hochstein, Ray Clark, Laura Tiehen, Rhonda Falk, Suzy Fahrmeier, Jessica Griffiths, Mary Groves, Christine Rogge, Stefanie Callahan, and Bree Fallon, who worked astride our leaders these last few months....

(continued)

And the donors, participants and purchasers who contributed.

**...Thank You!** A wonderful evening of fellowship and financial support was experienced because of your hard work. - Father Justin



## Come Home to Communion



### Daily Masses for Lent

Monday, 6:15 & 8:15am  
Tuesday, 6:15 & 8:15am  
Wednesday, 6:15 & 8:15am  
Thursday, 6:15 & 8:15am  
Friday, 6:15 & 8:15am  
Saturday, 8:15am

**Weekend Masses:** Saturday, 4pm vigil Mass  
Sunday, 7:30am, 9am & 11am

**Sign Interpreted Mass:** 2nd Sundays at 11am

**Masses are recorded daily;** find them at [stmkc.com](http://stmkc.com) or [youtube.stmkc.com](http://youtube.stmkc.com).

## Pray the Rosary with Others

### Sundays, after 9am Mass

Join with the Knights of Columbus in prayer.

### Monday-Friday, after the 8:15am Mass, Chapel

All are welcome to pray the rosary with others on Saturdays, after the 8:15am Mass. Fatima devotion is also celebrated on First Saturdays.

## The Light is on for You This Lent

Confessions are offered in the reconciliation room.

Tuesday, 5-6pm

Thursday, 5-6pm

Saturday, 7:15-8am & 3-3:45pm  
and by appointment

## Church Hours for Private Prayer This Lent

Monday, 6am-6pm

Friday, 6am-6pm

Tuesday, 6am-6pm

Saturday, 7am-5pm

Wednesday, 6am-6pm

Sunday, 7am-9pm

Thursday, 6am-6pm

## Eucharistic Exposition at STM

### Sundays, Noon-9pm in the Church

Regular time spent with the Lord in Adoration can be life changing! First Sundays, Noon-1pm, has music.

**Like anything else that is worthwhile in life,** it takes a certain degree of discipline to become more eucharistic in your prayer life. Remember, however, that God is never outdone in generosity.

## Please hold in prayer

CONTACT THE PARISH OFFICE, [BULLETIN@STMKC.COM](mailto:BULLETIN@STMKC.COM) OR 942-2492 X202, TO ADD OR REMOVE NAMES FROM THE PRAYER LIST. IF YOUR NAME IS DROPPED OFF AND YOU ARE IN NEED OF ADDITIONAL PRAYERS FOR HEALING, CONTACT THE PARISH OFFICE. **NAMES APPEAR EVERY OTHER WEEK.**

### ...our family and friends in the military:

Nick Alder  
Drew Belzer  
J.D. Corless

Mike Dean  
Logan Elrader-Effertz

TJ Francik  
Luke Jokerst

Jonathan Kennaley  
Zach Love

Patrick Rogers  
Christopher Yates

### ...our parishioners who are sick:

Mary Sue Adams  
Debbie Crawford  
Jean Fuller

Mary LeFebvre  
Betty Moore  
Charles Moran

Dolores Rabuse  
Mary Robinson  
Charlotte Scanlon

Debbie Siemieniewski  
Cathy Terwelp  
Karen Tritt

Leonardo Viril  
Bill Young

### ...our family and friends who are sick:

Emma Beaver  
Scott Carson  
Chris Frantze

Mary Jane Grimaldi  
Cynthia Kirkendoll  
Rita Kopp

Denise Adams Mehlo  
Linda Moore

Sean Pinkerton  
Peter Szumigala

John Webb  
Agnes Welliver

### ...our family and friends who are hospitalized:

**Mid-America Rehab:** Larry LeFebvre

**St. Luke's Plaza:** Mary LeFebvre

### ...our family and friends who have died:

Gloria Thompson; Gerard Merker; Mary Herrington; Dolores Rabuse; Mike Gula, cousin of Susan Duerr; Judy Chaney, sister of Carolyn Oberjurge



## February Prayer Intentions

**Pope Francis:** We pray that those with a terminal illness, and their families, receive the necessary physical and spiritual care and accompaniment.

**Bishop Johnston:** For those who are discerning a call to the priesthood or consecrated religious life.

## Fresh Fire Fridays

**Feb. 23, Mar. 22, Apr. 19, May 10; 7-9pm**

Fresh Fire is a prayer experience crafted to open hearts to experience Jesus' real presence in the Eucharist by combining candlelit Eucharistic Adoration throughout, with praise and worship music, a speaker offering personal witness, and opportunities to come to the altar for a blessing and intercessory prayer.



## Care & Support

### International Day of Prayer and Awareness Against Human Trafficking

**Thursday, February 8**

February 8 is the feast day of Saint Josephine Bakhita, who in the 1870s was kidnapped at the age of seven from Sudan and spent several years in slavery.

It is estimated that more than 20 million people worldwide are victims of human trafficking, 70% of whom are women and children. Both the Vatican and the United States Conference of Catholic Bishops (USCCB) have issued statements decrying the evil of human trafficking and calling on governments throughout the world to address issues that contribute to it. They also call on Catholics and all people of good will "to uphold and affirm human dignity and grow in solidarity with those who are vulnerable to exploitation and have been impacted by this terrible evil of modern-day slavery." For more information, go to [usccb.org](https://usccb.org). Following is a prayer from the USCCB.

*Loving Father, we seek your divine protection for all who are exploited and enslaved. For those forced into labor, trafficked into sexual slavery, and denied freedom. We beseech you to release them from their chains. Grant them protection, safety, and empowerment. Restore their dignity and provide them a new beginning. Show us how we might end exploitation by addressing its causes. Help us reach out in support of victims and survivors of human trafficking. Make us instruments of your spirit for their liberation. We pray this in the name of our Lord, Jesus Christ. Amen.*

## Caring for the Caregiver

**Sunday morning, February 11, in the Narthex**

In conjunction with World Day of the Sick on February 11, 2024, Pastoral Associate, Peggy Lucas, will provide an opportunity for parishioners to give ideas and feedback about an upcoming ministry, "Caring for the Caregiver," at Saint Thomas More. She will be welcoming ideas and feedback after the Masses on Sunday morning. Please look for the table in the narthex on February 11 so that we can better serve our community. You are also welcome to contact her directly at 816-942-2492 x210 or [peggy@stmkc.com](mailto:peggy@stmkc.com).

## Grief Peer Support Group

**3rd Wed. (Feb. 21), 6-7pm, in the Parish Office**

**1st Wed. (Mar. 6), 4-5pm, Bauman Room of More Hall**

Grief is difficult and can be experienced as a result of any kind of loss. In addition to supporting each other, we use various resources to better understand our grief. Peggy Lucas, Pastoral Associate, facilitates these groups. Attend as you are able. For more info, contact her at [peggy@stmkc.com](mailto:peggy@stmkc.com) or 816-942-2492 x210.



## Girl Scout Cookie Sales

**Sunday, February 11, in the Narthex**

Girl Scouts received their cookie delivery this week and will have their cookies available in the narthex after each of the weekend Masses. Cookies include the classic Trefoils (shortbread) and Thin Mints. There are seven more yummy delights! The cost is \$6/package and cash, checks and cards will be accepted.

## Catholic Charities Emergency Assistance Fund (CCEAF) February 17-18

This collection funds the resources that help Catholic Charities support parish emergency assistance centers and food pantries provide food, and rent and utility assistance.

For more information about Catholic Charities of KC, and to read stories about some have been helped, visit [catholiccharities-kcsj.org/](https://catholiccharities-kcsj.org/).



**View the video  
Give online**

## STM Helps Refugee Family

On February 3, STM parishioners furnished a house for a refugee family from Myanmar. The family of four consists of parents and two toddlers who had been living in a refugee camp in Malaysia. Myanmar has suffered decades of repressive military rule, widespread poverty and violence against ethnic minorities. Nearly one million people have fled Myanmar since 2017 amid waves of violence. Thank you to everyone who donated furniture, household items and money so this family can have a new start in Kansas City!



## January Financials

Regular - \$306,230.33      Plate - \$3,945.96  
Facilities - \$4,288.00  
Education Fund - \$747.00      School - \$1,077.40  
Catholic Home Missions - \$4,480.00

**Thank you** for your continued contributions!

**Former Saint Catherine's parishioners:** Call the parish office if you are in need of your 2023 tax statement.



## Growing in Faith Together (G.I.F.T.)

### Tuesdays, 9-10:30am in the Bauman Library

G.I.F.T. is a group of ladies that meets after 8:15am Mass most every Tuesday. We read the gospel and talk about its meaning in our lives. If you are interested, please call Becky Turner at 816-550-3655.

## Considering becoming Catholic or want to know more?

### Tuesdays, 6:15-7:30pm in More Hall A

Journey with other individuals to learn more about the Catholic Church and to discern God's invitations offered through the Catholic Church. Sessions are open to adults and children, baptized and not. Questions? Contact Father Justin, frjhoye@stmkc.com or 816-942-2492 x204.

**Feb. 13:** Sacraments of Healing: Confession/Reconciliation

## School of Religion

### Wednesdays, 6:15-7:30pm in More Hall

School of Religion provides catechesis for grade school children who do not attend Catholic school. An online registration form can be found at [stmkc.com/sor](http://stmkc.com/sor). Questions? Email Susan at [aquiel2000@yahoo.com](mailto:aquiel2000@yahoo.com).

## SPRED Class

### Monday, February 19, 6:30-8:30pm in More Hall

A group for the developmentally delayed meets about every other week to share their faith. Questions? Email Becky at [bturner727@yahoo.com](mailto:bturner727@yahoo.com).

## 2024 Maryknoll Lenten Reflection Guide

The guide, "Caring for Creation," is now available to download from the Maryknoll Office of Global Concerns, [maryknollogc.org](http://maryknollogc.org). It contains reflections, questions, prayers, fasts and actions based on each week's Gospel reading and the experience of Maryknoll missionaries who have lived and worked with marginalized communities around the world.

## Eucharistic Marian Conference

### February 16-18 (Friday-Sunday)

As Pope John Paul II said, "The holy family is the beginning of countless other holy families. The history of mankind, the history of Salvation, passes by the way of the family." Saint Mary's Catholic Church (Father Kendall Ketterlin) will host this conference. The church is located at 600 N Liberty St, Independence MO 64050.

Please register for this event: St Mary's office at 816-252-0121 or email [smoffice@saintmarysparish.org](mailto:smoffice@saintmarysparish.org).

## More Friends (Parishioners 55+ years)

### February Pilgrimage: Thu., Feb. 29, 8:30am-4:30pm

Charlie Lynn & Beth Sullivan are putting together a Missouri pilgrimage to visit:

- Saint Ann's Church in Plattsburg (just celebrated 135 years as a parish),
- the Benedictine Sisters of Mary, Queen of Apostles in Gower, MO (where Sister Wilhelmina's grave is)
- the Cathedral in St. Joseph (where Father Benjamin Fenlon has been assigned)

Saint Ann's and the St. Joseph Cathedral are both points on the diocesan Pilgrimage Passport.

The day, open to parishioners who have renewed their More Friends membership, will be carpooling to the above locations and eating lunch in St. Joseph. Mass will also be included. Plan to have money for lunch and the carpool driver!

Call/Text Beth Sullivan at 816-547-5541 to express your interest in driving or riding.

### Membership: It's not too late!

To join More Friends, contact Beth. Dues for the 2024 year are only \$10!

# Lenten Offerings Beginning in February

Lent  
AT STM

## Lenten Art Participation Project

Through the Lenten season, the Art & Environment Committee invites people to bring twigs (no longer than six inches, please!). There will be a display on the round table in the narthex that includes chicken wire, into which the twigs may be inserted. The twigs are to unite your own slivers of crosses to those of Jesus'.

## \$20 for Lent

The recipient for this year's \$20 for Lent campaign is the Little Sisters of the Poor. They are an international congregation of Roman Catholic women religious, with a local center in KCMO. They were founded in 1839 by Saint Jeanne Jugan to serve the elderly poor. The last time STM took up a collection for the Little Sisters was 2018. For more information on this mission, please visit [littlesistersofthepoorkansascity.org/](http://littlesistersofthepoorkansascity.org/).

## STM Respect Life Baby Shower

### Ash Wed. through Sunday, Feb. 25, in the Narthex

The Respect Life Committee would like to help Saint Mary's Home for Unwed Mothers in Liberty, MO and needs your help! Their wish list includes:

- #5 baby diapers
- Baby wipes
- Cloud Island changing pad liner (gray edge)
- Diaper Genie Complete Pail (white)
- Dr. Brown's narrow baby bottle nipples level 4 fast flow (9-month)
- Dapple bottle soap
- Seventh Generation tub and tile cleaner
- All brand free clear liquid laundry detergent with OXI stain remover
- Bounty paper towels
- Vicks Vape pads refill, soothing menthol
- Infant Tylenol pain & fever reducer liquid, dye-free
- Homedics sound machine
- Shea moisture Jamaican Black castor oil strengthen & restore conditioner
- Suave professional Keratin infusion soothing shampoo and conditioner



**NOTE:** St. Mary's is registered at Target.com. Enter "St. Mary's Home for Mothers, Liberty, MO" under "Organizations."

Items may be left in the play pens set up in the narthex. Thank you for helping to honor mothers and their babies!

## Stations of the Cross

### Fridays of Lent, 5pm

February 16 - STM Knights of Columbus

February 23 - Monday Rosary Group

## Fish Fry Fridays

### Feb. 16 & 23; March 1, 8, 22; 5-7pm

Cost: \$10/senior, \$12/adult, \$35/family

Desserts: \$2 each

## Lenten Care Notes Available

*A Lenten Journey Through Grief*  
*Longing for God - The Grace of Lent*  
*40 Ways to Enrich Your Lenten Prayer*  
*The Season of Lent: From Ashes to Easter*  
*Lent - A Time to Pray for Others*  
*Praying the Bible During Lent*

## Lenten-themed Lighthouse Materials

*The Woman at the Foot of the Cross (CD)*  
*Family & Prayer Life During Lent (CD)*  
*The Imitation of Christ (Book)*

## Overview of the Minor Prophets of Lent

### Sundays (Feb. 18 & 25; Mar. 3 & 10), 10:05-10:50am



Join Father Justin in More Hall for a brief overview each week of one of the minor prophets who appear during our Lenten Journey.

February 18th - **Joel**

February 25th - **Jonah**

March 3rd - **Micah**

March 10th - **Hosea**

## Bible Study: Discover the Story of Salvation

### Mondays (Feb. 19-Mar. 25), 6-7:30pm in More Hall

This Lent, rediscover the one story that really matters, revealed through Scripture—and your place in it! This Lenten Bible Study will guide you through the big picture of salvation history. Re-encounter God's love for his people, reclaim the story of salvation as your story, and learn to share God's story with others. Sessions include videos with Dr. Edward Sri and Curtis Martin, followed by small group discussion. All are welcome! Please bring a bible, a pen/pencil, and something to write on. To reserve a seat, contact Hayley Shaver at 816-942-2492 x202 or [hayley@stmkc.com](mailto:hayley@stmkc.com).





# February/March 2024

**Mass Schedule for Lent**  
Monday-Friday, 6:15AM & 8:15AM  
Saturday, 8:15AM & 4PM Vigil  
Sunday, 7:30AM, 9AM, 11AM

Sun	Mon	Tue	Wed	Thu	Fri	Sat
<b>Confession Schedule for Lent</b> Tuesday-Thursday, 5-6PM* Saturday, 7:15-8AM & 3-3:45PM * Not Thursday, March 21	<b>Private Prayer Hours for Lent</b> Monday-Friday, 6AM-6PM Saturday, 7AM-5PM Sunday, 7AM-9PM		<b>14 Ash Wednesday</b> Masses at 6:15AM, 8:15AM, 6PM \$20 for Lent begins Baby Shower begins	15	16 Stations of the Cross, 5PM Fish Fry, 5-7PM	17
18 Catholic Charities Collection Overview of Minor Prophets, 10:05-10:50AM	19 Salvation History Bible Study, 6-7:30PM	20	21	22	23 Stations of the Cross, 5PM Fish Fry, 5-7PM Fresh Fire, 7-9PM	24
25 Overview of Minor Prophets, 10:05-10:50AM Baby Shower ends	26 Salvation History Bible Study, 6-7:30PM	27	28 <b>Lighthouse Books &amp; CDs</b> Are available in the narthex, free of charge.	29	<b>March 1</b> Stations of the Cross, 5PM Fish Fry, 5-7PM	<b>March 2</b>
3 Overview of Minor Prophets, 10:05-10:50AM	4 Serve at Morning Glory, 6:30-8:30AM Salvation History Bible Study, 6-7:30PM	5	6	7	8 Stations of the Cross, 5PM Fish Fry, 5-7PM	9
10 Catholic Relief Services Collection Overview of Minor Prophets, 10:05-10:50AM Movie: Saint Teresa, 2PM	11 Serve at Morning Glory, 6:30-8:30AM Salvation History Bible Study, 6-7:30PM	12	13 <b>Lenten-themed Care Notes</b> Are available on the north side of the narthex.	14	15 Stations of the Cross, 5PM	16
17 Presentation by CEO of World Apostolate of Fatima, 2PM	18 Serve at Morning Glory, 6:30-8:30AM Salvation History Bible Study, 6-7:30PM	19	20 <b>Easter Sunday Masses</b> (March 31) 7:30AM, 9AM, 11AM	21	22 Stations of the Cross, 5PM Fish Fry, 5-7PM Fresh Fire, 7-9PM	23
<b>24 Palm Sunday*</b> <b>*Sign Interpreted Masses</b> Palm Sunday, 11AM Holy Thursday, 7PM Good Friday, 7PM	25 Serve at Morning Glory, 6:30-8:30AM Salvation History Bible Study, 6-7:30PM	26	27	28 <b>Holy Thursday</b> Mass of the Lord's Supper, 7PM Adoration until 10PM	<b>29 Good Friday*</b> 7 Last Words of Christ, Noon Holy Land Collection Evening Service, 7PM	<b>30 Holy Saturday</b> Easter Vigil Mass, 8PM



## 50th KC Saint Patrick's Day Parade

### Gathering: Sunday, February 18, 1-4pm

Come to KCIC, 3300 Broadway, KCMO to kick off our 50th Parade. The 2024 Parade Dignitaries will be announced. Free admission. Food & beverages available for purchase.

### City On A Hill (COAH) Young Adult Events

Visit [kansascityonahill.org/](http://kansascityonahill.org/) for more info. Click on Get Involved to sign up for The Loop, a weekly email.

### KC Underground

Thursday, February 15, 7-9pm, Coronation of Our Lady

## Safe Environment

### Protecting God's Children Training:

**Thu., Feb. 22; Tue., Apr. 9; Wed., Jun. 19, 6-9pm**

Adults who work with minors are required to attend in-person or Zoom Protecting God's Children Workshops. Three workshops have been set up to be held in More Hall! To register for any of these, set up an account on [virtus.org](http://virtus.org). Other requirements, accessed through Virtus, are listed on the front cover of this bulletin.

## Parish Calendar of Events

Thu., Feb. 8 - Old Testament Intro, 6pm, More Hall

Knights of Columbus, 7:15pm, Bauman Room

Mon., Feb. 12 - Green Team mtg., 6:30pm

Living Waters, 7-10pm

Tue., Feb. 13 - G.I.F.T., 9-10:30am, Bauman Room

OCIA, 6:15-7:30pm, More Hall A

Wed., Feb. 14 - **Ash Wednesday**

Parish Masses at 6:15am, 8:15am & 6pm

Choir Rehearsal, 7-8:30pm, Choir Loft

Fri., Feb. 16 - Stations of the Cross, 5pm, Church

Fish Fry, 5-7pm, More Hall

Sun., Feb. 18 - 1st Sunday of Lent

Catholic Charities Emergency Assistance Appeal

Overview of Minor Prophets, 10:05-10:50am

Mon., Feb. 19 - President's Day

Parish Office closed

Salvation History Bible Study, 6-7:30pm, More Hall

SPRED Class, 6:30-8:30pm, More Hall

Living Waters, 7-10pm

Tue., Feb. 20 - G.I.F.T., 9-10:30am, Bauman Room

OCIA, 6:15-7:30pm, More Hall A

Wed., Feb. 21 - Casseroles for Uplift, 1:30-3pm

Grief Support Group, 6-7pm, Parish Office

School of Religion, 6:15-7:30pm

Choir Rehearsal, 7-8:30pm, Choir Loft

**NOTE:** Parish Office phones may be down 1-2pm on Friday, February 16, due to computer system updates. Email continues to work!

## STM School

Linda Crosthwait, Principal

816-942-5581 [STMKC.COM/SCHOOL](http://STMKC.COM/SCHOOL)



### Office Hours

Mon.-Thurs., 8am-3:45pm; Fri., 8:30am-3:30pm

### STM School Dates to Note

Sat., Feb. 10 - Father/Daughter Dance

Tue., Feb. 13 - Valentine's Day parties

Wed., Feb. 14 - Ash Wednesday Mass, 2pm

Thu.-Mon., Feb. 15-19 - No School

Fri., Feb. 23 - Booster Club Bags Tournament, 6:30pm

Thu., Feb. 29, 6-8pm - All School Skate at Skate City

March 8-18 - Spring Break

### Dine Out Night

**Thursday, February 8**

Head on down to Big Belly's and let them know you are with STM!

### STM-for-All Father/Daughter Dance

**Saturday, February 10, 6:30-8pm, Flanagan Hall**

\$25 per father/daughter (\$10 each additional daughter). Cash or Venmo.

### STM Boys Volleyball - Registration is open now!

To sign up 4th-8th grade boys for volleyball, please go to [PLKC.org](http://PLKC.org) and click on the register now link. The season is short, running March 18-May 17. With Missouri High schools making boys volleyball an MSHSAA activity (a letter sport) and Kansas schools not far behind, this is a great opportunity to get your boys started in this growing sport.

Please sign up soon to allow time for evaluations, if needed, and to secure coaches. Volunteer coaches are needed for grades 4-5! Email [jkalbsmith@gmail.com](mailto:jkalbsmith@gmail.com) if interested.

### PLKC Girls Flag Football: Grades 3rd-8th

Visit [cyojwa.org/current-programs](http://cyojwa.org/current-programs) to sign up 3rd-8th grade girls. The season runs March 4-May 18.

For more information on the program please visit [cyojwa.org/content/29293/Football-Girls-Flag](http://cyojwa.org/content/29293/Football-Girls-Flag).

### Souper Bowl Food Drive for Catholic Charities

**Through Tuesday, February 13**

Cans and non-perishables are being collected for those who are less fortunate.

### Dine Out Night at Freddy's!

**Wednesday, February 21, 5-9pm**

Come and enjoy your Freddy's favorites while support-



ing a great cause: STM Home and School! STM will receive 15% of fundraiser sales, including both digital and physical orders! To participate digitally, order on the Freddy's mobile app or website using the code GIVEBACK. To participate at the restaurant, tell the cashier of your participation (before payment).

**STM School Registration: Now Open!**  
**Register before March 8 for the 2024-25 school year!**


Registration Fee for 1 student - \$2,200  
 STM Parishioners must have a 2024 pledge on file.  
 Tuition for 1 student - \$7,100  
 Discounts are given to multiple children in the same family.

**Pre-School & PreK**  
 Registration Fee - \$330/child (ages 3 & 4)  
 5-day - \$7,100  
 3-day - \$4,850

**After March 8, there is a \$200 late fee.**  
**To complete the financial piece,** you may come to the parish office Tuesday, February 22 or March 5, 2-5:30pm.

**MOScholars Tax Credit/Scholarships**  
 MO residents can direct HALF of their annual state income taxes to be used for scholarships for children to attend Catholic Schools - all at NO COST to the contributing resident! Visit [brightfuturesfund.org](http://brightfuturesfund.org) or find a brochure in the narthex to make a contribution or to see if you qualify for a scholarship, .

**2nd Annual Bingo for Books: Save the date!**  
**Friday, March 1, 6:30-8:30pm, Flanagan Hall**  
 \$20/family, \$5 for extra cards  
 Prizes for the highest grade and class attendance.  
 BYOB and a dessert and snack to share!

**STM Auction Fund-a-Need continues**  
 It's not too late to contribute!  
 Goal: \$200,000

**Vacation Bible School**  
 STM will bring back Vacation Bible School this summer, the week of June 24. Plans have already begun! To volunteer, contact Hayley Shaver at [hayley@stmk.com](mailto:hayley@stmk.com) or 816-942-2492 x223.

**Summer Cyclones Summer Camp**  
 Camp will not be held this summer.

Parish Office Staff	
 Sharon Arnett Liturgy Coordinator x208 <a href="mailto:sharon@stmkc.com">sharon@stmkc.com</a>	 Peggy Lucas Pastoral Associate/Outreach x 210 <a href="mailto:peggy@stmkc.com">peggy@stmkc.com</a>
 Mary Begnaud Receptionist x201 <a href="mailto:mary@stmkc.com">mary@stmkc.com</a>	 Father Christian Malewski Sacramental Minister x203 <a href="mailto:cmalewski@olog.org">cmalewski@olog.org</a>
 Scott Dulle Building & Grounds Director <a href="mailto:dulle_scott@stmcyclones.org">dulle_scott@stmcyclones.org</a>	 Bob Sandford Publications & Music Director x212 <a href="mailto:bob@stmkc.com">bob@stmkc.com</a>
 Father Justin Hoyer Pastor x204 <a href="mailto:frjhoye@stmkc.com">frjhoye@stmkc.com</a>	 Joan Sandford Office Manager x202 <a href="mailto:joan@stmkc.com">joan@stmkc.com</a>
 Becky Johnson Finance Coordinator x224 <a href="mailto:becky@stmkc.com">becky@stmkc.com</a>	 Father Paul Sappington In Residence <a href="mailto:frsappington@smacatholic.org">frsappington@smacatholic.org</a>
 Judy Kashka Funeral & Wedding Liturgist <a href="mailto:judy@stmkc.com">judy@stmkc.com</a>	 Hayley Shaver Evangelization & Discipleship x223 <a href="mailto:hayley@stmkc.com">hayley@stmkc.com</a>
	 Tim Waris Business Manager x218 <a href="mailto:tim@stmkc.com">tim@stmkc.com</a>

**Parish Office Hours (until further notice)**  
 Office Hours: M-W 8:45am-3:30pm; T-Th 8:45am-5pm  
 F 8:45am-1pm

**Finance Ministry Team**  
 Justin Hicks, Chair  
 Mark Meierhoffer  
 Bruce Gregg  
 Stefanie Bresette  
 Laura Christopherson  
*Parishioner volunteers serve for three-year terms.*  
 Questions? Email [FinanceCouncil@stmkc.com](mailto:FinanceCouncil@stmkc.com).

**Diocesan Ombudsman**  
 Joe Crayon [crayon@ombudsmankcsj.org](mailto:crayon@ombudsmankcsj.org) or 816-812-2500

**To register as a member of Saint Thomas More Parish...**  
 ...go to [stmkc.com/registration](http://stmkc.com/registration), contact the parish office or pick up a registration form on the Information table in the church narthex.

## Safe Environment Information

The Diocese of Kansas City~Saint Joseph is committed to combatting sexual abuse in the Church. If you are a victim of sexual abuse, or if you *observe or suspect* sexual abuse:

- Call the **MO Child Abuse Hotline**, 1-800-392-3738 (if the victim is currently under the age of 18), or **KS Protection Report Center**, 1-800-922-5330, and
- Contact your **local law enforcement agency** or call 911, and
- After reporting to these civil and law enforcement authorities, report suspected *sexual abuse of a minor or vulnerable adult* to the **Diocesan Ombudsman, Joe Crayon**, at [crayon@ombudsmankcsj.org](mailto:crayon@ombudsmankcsj.org) or 816-812-2500 if the abuse involves a priest, deacon, employee or volunteer of the Diocese of Kansas City~Saint Joseph.

The diocese has a sincere commitment to providing care and healing resources to victims of sexual abuse and their families. Please contact Whitney True-Francis, the **Victim Advocate** at [victimadvocate@diocesekcsj.org](mailto:victimadvocate@diocesekcsj.org) or 816-392-0011 for more information.

**FOR ADDITIONAL INFORMATION**, contact:

**Joan Sandford**, Parish Safe Environment Coordinator, [safety@stmkc.com](mailto:safety@stmkc.com) or 942-2492 x202, OR

**Meredith Blair**, School Safe Environment Coordinator, [blair\\_meredith@stmcyclones.org](mailto:blair_meredith@stmcyclones.org) or 942-5581.

## Mass Intentions

Mon: 2/12	<b>8:15AM Matthew McCullough<sup>†</sup></b>
Tues: 2/13	<b>6:15AM Joan Hughes<sup>†</sup></b> 8:15AM Virginia Gioia <sup>†</sup>
Wed: 2/14	<b>6:15AM Joseph F Rozell<sup>†</sup></b> <b>**8:15AM Lee Sbisa<sup>†</sup></b> <b>6:00PM Mike &amp; Frances Vittorino<sup>†</sup></b>
Thur: 2/15	<b>6:15AM Police Officers</b> 8:15AM Carl & Linda Fiorella <sup>†</sup>
Fri: 2/16	<b>6:15AM Mary Edith Burns<sup>†</sup></b> 8:15AM Bill Brady <sup>†</sup>
Sat: 2/17	<b>8:15AM Ed &amp; Anne<sup>†</sup> Whitcomb</b> 4:00PM Bernie Effertz <sup>†</sup>
Sun: 2/18	<b>7:30AM Jim Budde<sup>†</sup></b> 9:00AM Our Parishioners <b>11:00AM Kent Misemer<sup>†</sup></b>

<sup>†</sup>Deceased

**\*\*School Mass**

**To request a Mass intention, stop by the parish office or call 816-942-2492. Suggested donation per Mass is \$10.**

### SCRIPTURE READINGS

For the daily readings, visit [usccb.org/bible/reading](http://usccb.org/bible/reading). Have the readings sent to your email each day, hear the readings read to you, or watch a video with a reflection based on the readings.



TJ BRENNAN - *Parishioner*

816.394.2224

tjbrennan@cekinsurance.com

www.cekinsurance.com

## LET'S GROW YOUR BUSINESS

Place Your Ad Here  
and Support Our Parish!

**CONTACT ME**  
**Jon Becker**

jbecker@4LPi.com  
(800) 950-9952 x2536



Since 1966

7735 Wornall • 816.523.4566

Steve and Aimee Gromowsky

Sam and Mary Gromowsky

### SHORT STAFFED?

Place an ad here to find new  
local talent for your business.



**CALL 800-950-9952**

**The Genuine. The Original.**



Overhead Door Company of Kansas City™

A **DH**PACE Company

REPAIR + REPLACE GARAGE  
DOORS AND OPENERS

RESIDENTIAL DOORS

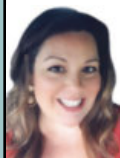
**FREE ESTIMATES**

**913-361-6023**

OverheadDoorKansasCity.com



SERVING KANSAS CITY **SINCE 1927**



**Shelly Balthazor**

*Real Estate Specialist, Parishioner*

816-591-5277

shellyb@reecenichols.com



\*1 Real Estate Team in MO & KS

\*1 KC Real Estate Team in Homes Sold

\*1 in Sales Volume

\*3 Nationally Ranked Team in the US

\*740+ Million in Sales Volume in 2021

**SUPPORT OUR  
ADVERTISERS!**

## DOES YOUR NONPROFIT ORGANIZATION NEED A NEWSLETTER?

Engaging, ad-supported  
print and digital newsletters  
to reach your community.

**Visit [lpicomunities.com](http://lpicomunities.com)**



For ad info. call 1-800-950-9952 • [www.4lpi.com](http://www.4lpi.com)

St. Thomas More, Kansas City, MO

C 4C 02-0710





**SUPPORT OUR ADVERTISERS!**

**JEFF THOMPSON ORTHODONTICS**

*A Fresh and Polished Approach to Oral Health*

4851 WEST 134TH STREET • LEAWOOD • KANSAS 66209-7803  
913.681.8300 • WWW.JEFFTHOMPSONORTHO.COM

**JEFFREY J. THOMPSON, D.D.S., M.S.**  
DIPLOMATE AMERICAN BOARD OF ORTHODONTICS

**WALK-IN CLINIC**  
for sports injury or fractures

M-F: 9am -11am, 1pm - 3pm. Ages 0 -16

**pediatric orthopaedic surgery Associates**

5250 W. 94th Terrace, Prairie Village, KS 66207  
**913-451-0000**  
www.pedorthokc.com

*Like a good neighbor State Farm State Farm is there.®*

**Larry B. Langford, CLU CHFC**

Bus.: 816-761-8711  
Res.: 816 217 8112  
larry.langford.b5u9@statefarm.com

13012 Fuller  
P.O. Box 230  
Grandview, MO 64030

STATE FARM INSURANCE COMPANIES  
HOME OFFICES BLOOMINGTON, ILLINOIS

**RE/MAX**  
State Line Real Estate

**Tina R. Gaughan**  
REALTOR®, SRES

Direct Line: (913) 312-3630  
Mobile: (816) 835-3230  
TinaGaughan@gmail.com  
TinaGaughan.com  
11251 Nall Ave. • Leawood, KS 66211

Each Office Independently Owned and Operated

**Catholic Family CREDIT UNION**

Full Service For All Your Needs  
816-444-7440  
9237 Ward Parkway, Ste 114  
www.catholicfamilycu.com  
Savings Insured by the NCUA up to \$250,000

**SIDING WINDOWS DOORS**  
**Cornerstone**  
HOME IMPROVEMENTS

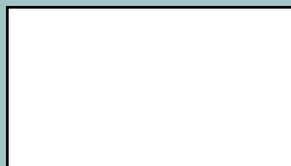
NARI • AIA • BBB

816-737-0601 / 913-244-6046  
www.CornerstoneWindowsKC.com

**KANSAS CITY MONUMENT**

6842 Troost Ave  
Kansas City, MO 64131  
**816-333-0075**  
kcm monument1888@outlook.com

Monday - Friday:  
9:30 AM - 4:00 PM  
Saturday:  
10:00 AM - 1:00 PM



**learn. grow. soar.**

**FORMING MEN AT THE ROCK**  
ROCKHURST HIGH SCHOOL

WWW.ROCKHURSTHS.EDU/ADMISSIONS

**PILEGGI PAINTING**

Exterior - Interior - Decks - Residential & Commercial  
**Frank Pileggi - Owner**  
www.PileggiPainting.com  
frank@pileggipainting.com | 913-558-5204

**WILLS & TRUSTS • ESTATE PLANNING**

**Christopher Gaughan, Parishioner**  
ESTATE PLANNING ATTORNEY

- Estate Planning
- Business Succession
- Wills & Living Trusts
- Powers of Attorney
- Farm & Ranch Planning
- Special Needs Trusts

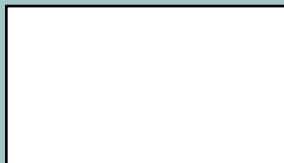
**CALL FOR A FREE CONSULTATION!**

**GAUGHAN & CONNEALY**  
ESTATE PLANNING ATTORNEYS  
4400 College Blvd, Suite 190 | Overland Park, KS 66211  
(913) 262-2000 | www.MidwestEstatePlan.com

**ADT-Monitored Home Security**  
Get 24-Hour Protection From a Name You Can Trust

- Burglary
- Flood Detection
- Fire Safety
- Carbon Monoxide

ADT Authorized Provider | **SafeStreets**  
**833-287-3502**



**MEDICARE**

Let me help you! 30 years experience

**Mary Owens Boesen**  
Parishioner  
Life & Health Insurance Sales  
**816-942-0666 • mboesen@kc.rr.com**

**catholicmatch®**

Missouri

**CatholicMatch.com/MO**

WE APPRECIATE OUR ADVERTISERS!

**IF YOU LIVE ALONE**

**MDMedAlert!**™ As Low As **\$19<sup>95</sup>** /mo.

- ✓ Ambulance
- ✓ Police/Fire
- ✓ Family/Friends
- ✓ GPS & Fall Alert

**CALL NOW! 800.808.9294** • md-medalert.com

**FREE AD DESIGN**

with purchase of this space

**CALL 800-950-9952**

**WE'RE HIRING!**  
AD SALES EXECUTIVES

BE YOURSELF.  
BRING YOUR PASSION.  
WORK WITH PURPOSE.

- Paid training
- Some travel
- Work-life balance
- Full-Time with benefits
- Serve your community

**4LPI**

Contact us at  
careers@4lpi.com or  
www.4lpi.com/careers

**Tran Tax**

13035 B Holmes Rd.  
(816) 575.7725 | trantax.com

STRATEGY • ADVANTAGES • EXPERIENCE

**Old Mill Grooming**  
Let us pamper your pet

(816) 941.8484 | 13031 Holmes Rd.

**Robin's Nest**  
Salon & Boutique

(816) 943-0005 | 13035 C Holmes Rd.





KC's Leading Decking & Andersen Window Supplier

Mike McGlinn  
Parishioner

816-331-2211

OwenLumber.com

Muehlebach Funeral Care & Cremation Services



MUEHLEBACH  
FUNERAL CARE

Parishioners:  
Steve & Nicole Pierce

Jordan Pierce  
STM Class of 2011

Jenny Mertes

Tom Reagan

816-444-2060

www.muehlebachchapel.com

"Our Family Dedicated to Serving Yours."

WE APPRECIATE OUR  
ADVERTISERS!



Your financial partner throughout your life.

Matthew Pomianek, AAMS®, Financial Advisor, Parishioner  
5000 W 95th St Ste 103  
Prairie Village, KS 66207  
913-648-6084  
matthew.pomianek@edwardjones.com

Member SIPC

Edward Jones  
MAKING SENSE OF INVESTING

Eckhard Preuss  
Agent

8009 E. 171st Box 645  
Belton, MO 64012-0645  
Bus 816.331.4288 Fax 816.331.2907  
eckhard.preuss.b5xr@statefarm.com



Better Homes  
KANSAS CITY  
HOMES



Judy Sheaman, ABR

Sales Executive  
with 26 Yrs. Experience

Parishioner  
Licensed in Kansas & Missouri

Office: 913-981-2827  
Cell: 816-304-2888  
KC Magazine

"Five Star Real Estate Agent"  
for overall customer satisfaction since 2005

Carpets | Area Rugs | Upholstery  
Hardwood Floors | Air Ducts  
Tile & Grout | Residential/Commercial  
WE CLEAN GREEN | zerorez  
(816) 425-3655  
www.zerorezkc.com Steven Phelps

LET'S GROW YOUR BUSINESS

Place Your Ad Here and Support Our Parish!

CONTACT ME Jon Becker

jbecker@4LPi.com • (800) 950-9952 x2536

ALLIED  
CONCRETE  
PRODUCTS  
12800 2nd St. Grandview  
816-966-8836  
Judy, Pete, & Amparo Furey  
Parishioners

RESIDENTIAL  
SEWAGE  
TREATMENT  
COMPANY, INC.  
816-966-8885  
Kathy Maguire & Tom Fritts  
Parishioners



Part-time  
Child Care Jobs  
Now Hiring!

Apply at: [kclinc.org/parttimejobs](http://kclinc.org/parttimejobs)

LINC Caring Communities Sites  
North Kansas City - Kansas City Public Schools  
Center - Hickman Mills - Grandview

Place Your Ad Here and  
Support our Parish!

Instantly create and  
purchase an ad with

AD  
CREATOR  
STUDIO



4lpi.com/adcreator

MCGILLEY  
MEMORIAL CHAPELS  
SINCE 1899

Funerals | Cremations | Receptions | Celebrations

"Celebrating Lives"

Patrick McGilley | Joe Haster | 816-942-6180 | [www.mcgilleystatelinechapel.com](http://www.mcgilleystatelinechapel.com)



Landscape Design  
& Installation

Let me design your  
dream landscape now!

Book now

913-515-4166

MALACHY@CONNORLANDSCAPING.COM



ACCESS YOUR POTENTIAL

AVILA  
UNIVERSITY

Avila.edu/catholic

FOUR WAY PLUMBING  
SERVICE & DRAIN CLEANING  
Same Location since 1979

816-331-1650

Nick & Marion Biondo, Jr. Plumbers



SUPPORT OUR  
ADVERTISERS!



John Sweeney CCIM  
Reece Commercial  
Commercial Real Estate  
(913) 945-3718 (913) 461-6326 mobile  
John@ReeceCommercial.com  
Brokerage Investment Development Consulting

BURIAL • ENTOMBMENT • CREMATION • TRADITIONAL CEREMONIES • CELEBRATIONS OF LIFE

CULLEN  
FUNERAL HOME, INC.



PLAN AHEAD  
WE'LL TAKE THE FIRST STEP WITH YOU.

612 W Foxwood Dr  
Raymore, MO 64083  
(816) 322-5278



- Auto
- Home
- Life
- Commercial

We are an  
Independent  
Agency With  
Over 30 Years  
of Experience



NESTEL  
INSURANCE AGENCY  
"Where Customer Service Counts"

Mary Nestel  
816-361-6442

9233 Ward Parkway Ste 124  
Kansas City, MO 64114

www.nestelinsurance.com  
info@nestelinsurance.com



PARISHIONER OWNED  
JOE & MAGGIE TULIPANA

SHAWNEE  
13214 W 62ND TERR, SHAWNEE, KS 66216

VILLAGE WEST (INSIDE NEBRASKA FURNITURE MART)  
1601 VILLAGE WEST PKWY, KANSAS CITY, KS 66111

WE CATER! 913.268.488Q  
catering@blindboxbbq.com

BLIND  
BOX  
BBQ

BLINDBOXBBQ.COM



For ad info. call 1-800-950-9952 • [www.4lpi.com](http://www.4lpi.com)

St. Thomas More, Kansas City, MO

A 4C 02-0710