

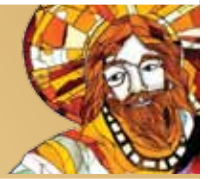


OUR **MISSION** IS TO PROVIDE
A WELCOMING, INCLUSIVE,
AND LOVING COMMUNITY BY
PROCLAIMING AND LIVING GOD'S
WORD THROUGH WORSHIP,
EDUCATION, AND SOCIAL JUSTICE.

SAINT THOMAS MORE PARISH

11822 Holmes Road, Kansas City, Missouri 64131 • stmkc.com

February 18, 2024



BULLETIN ONLINE

this and last week's at stmkc.com

Subscribe at stmkc.com/emailme→



MASSSES

WEEKDAY: Mon-Fri 6:15am & 8:15am

Sat 8:15am

WEEKEND: Sat 4pm, Sun, 7:30am, 9am & 11am

MASS ONLINE CONTINUES

RECONCILIATION

Individual Confessions: by appointment and
Tuesdays and Thursdays, 5-6pm
Saturdays, 7:15-8am and 3-3:45pm

OUR CLERGY

Father Justin Hoye, Pastor

In Residence: Father Paul Sappington

AT THE PARISH OFFICE

Office Hours:

Mon. & Wed. 8:45-1pm, 2-3:30pm*

Tues. & Thurs. 8:45-1pm, 2-5pm*

Friday 8:45-1pm

* lunch hour 1-2pm

Parish Office 816-942-2492

Office directory at stmkc.com and p.9

AT THE SCHOOL OFFICE

Linda Crosthwait

Principal

Meredith Blair

Assistant Principal

Office hours: Mon.-Thurs., 8am-3:45pm;

Fri., 8:30am-3:30pm

School Office 816-942-5581

School fax 816-941-2450

School email directory at stmkcschool.org

SCHOOL TOURS: contact Principal Linda Crosthwait at
816-942-5581 or crosthwait_linda@stmcyclones.org

And the angels
ministered to him.



Lent
1ST SUNDAY

*The Spirit drove Jesus out into the desert,
and he remained in the desert
for forty days, tempted by Satan.
He was among wild beasts,
and the angels ministered to him.*

Mk1:12-13

SAFE ENVIRONMENT

All volunteers working with minors or
vulnerable adults are required to:

- Attend a Protecting God's Children workshop
- Attend a mandated reporter training
- Submit to a background check
- Read the online Policy on Ethics and Integrity in Ministry

For more Safe Environment information,
including reporting and victim resources,
see page 10.





THE PASTOR'S PEN

Faithful People of Saint Thomas More,

This weekend, members of our OCIA (Order of Christian Initiation of Adults) that help welcome individuals discerning entrance into the Catholic Church, accompany a group from STM to the annual Rite of Election. This occasion allows parishes from throughout the diocese to gather with the Bishop and call forward these catechumens (unbaptized) and candidates (baptized in another Christian tradition) toward the Easter sacraments. We will be praying for these men and women with increased intensity during Lent.

Pages 6-7 of our bulletin provide a good overview of our many Lenten offerings. Lent affords us the opportunity to detach from our pursuit of power, prestige and possession, and allow ourselves to experience strength, honor and "needs-met" in the love of Jesus Christ.

Lastly, the annual Catholic Charities Emergency Appeal is this weekend, and STM has meaningful connections with their work. We have parishioners who work for CC, parishioners who volunteer at the CC food pantry here in south KC (the former Saint Matthew's), and we continue to provide a monthly site for an interpreted Sunday Mass for the hard of hearing, organized through CC. Thank you to those who will make a gift supporting their good work in our diocese.

Father Justin

P.S. Our Fund-a-Need appeal remains open as we seek to get the remaining dollars.

P.P.S. The Parish Office and School will be closed this Monday for Presidents' Day.

Note on Recent Book Mailings: We were made aware of a blanketing of households in our area - running from at least 114th to 135th Street, and from State Line to Holmes - of a book sent by a religious group spouting anti-Catholic nonsense. Parishioners, as well as those with no connection to the parish, received these, so we have confidence that neither our parish directories nor online systems were used in this endeavor. My pastoral advice: if you received this unsolicited material, pitch it into the recycling bin.
~ Father Justin



Come Home to Communion



Daily Masses for Lent

Monday-Friday, 6:15 & 8:15am

Saturday, 8:15am

Weekend Masses:

Saturday, 4pm vigil Mass

Sunday, 7:30am, 9am & 11am

Sign Interpreted Mass: 2nd

Sundays at 11am

Masses are recorded daily; find them at stmkc.com or youtube.stmkc.com.

Pray the Rosary with Others

Sundays, after 9am Mass

Join with the Knights of Columbus in prayer.

Monday-Friday, after the 8:15am Mass, Chapel

All are welcome to pray the rosary with others on Saturdays, after the 8:15am Mass. Fatima devotion is also celebrated on First Saturdays.

The Light is on for You This Lent

Confessions are offered in the reconciliation room.

Tuesday, & Thursday, 5-6pm

Saturday, 7:15-8am & 3-3:45pm

and by appointment

Church Hours for Private Prayer This Lent

Monday-Friday, 6am-6pm

Saturday, 7am-5pm

Sunday, 7am-9pm

Eucharistic Exposition at STM

Sundays, Noon-9pm in the Church

Regular time spent with the Lord in Adoration can be life changing! First Sundays, Noon-1pm, has music.

Be real with yourself. Holy hours are great, but if you don't have that much time, or if you aren't used to spending that long of a time in prayer, you might need to build up to it. Start with attending for fifteen minutes at a time. The quality of time you spend with our Lord and the frequency of times are often more meaningful than the length.

February Prayer Intentions

Pope Francis: We pray that those with a terminal illness, and their families, receive the necessary physical and spiritual care and accompaniment.

Bishop Johnston: For those who are discerning a call to the priesthood or consecrated religious life.

Fresh Fire Fridays

Feb. 23, Mar. 22, Apr. 19, May 10; 7-9pm

Fresh Fire is a prayer experience crafted to open hearts to experience Jesus’ real presence in the Eucharist by combining candlelit Eucharistic Adoration throughout, with praise and worship music, a speaker offering personal witness, and opportunities to come to the altar for a blessing and intercessory prayer.



Eucharistic Pilgrimage Passport

STM is one of eight sites throughout the diocese listed on the diocesan Eucharistic Revival Passport, highlighting our Fresh Fire Nights. Parishioners who document the visitation of at least five sites can submit their passport for a special gift, blessed by Bishop Johnston! Stickers for passports are found under the Saint Thomas More portrait in the narthex.



Music Ministry from the Pews

I recently attended Mass at a large church where the few people who were singing from the pews were holding back. The choir sounded beautiful. The organ sounded beautiful. The cantor was exceptional. The fire of faith they sent out spread only as far as those few in the pews that sang. They held back because if they sang any louder, they wouldn’t be able to hear the singers leading them. The missing link between the music

ministers and the song of the assembly was a sound system that was not properly configured.

I rejoice in those who sang that day when most gave up. They were honoring the call to spread the fire of faith. They were a living link between music ministers and assembly, ready for that day when one small shift sets something beautiful in motion.

Thanks be to God that we at STM know the joy of ministering to one another in song. Blessed are those who sing out from the pews and the microphone to encourage their siblings in song to be catalysts of the Spirit.
~ Bob Sandford

Care & Support

Grief Peer Support Group

3rd Wed. (Feb. 21), 6-7pm, in the Parish Office

1st Wed. (Mar. 6), 4-5pm, Bauman Room of More Hall

Grief is difficult and can be experienced as a result of any kind of loss. In addition to supporting each other, we use various resources to better understand our grief. Peggy Lucas, Pastoral Associate, facilitates these groups. Attend as you are able. For more info, contact her at peggy@stmkc.com or 816-942-2492 x210.

Caring for the Caregiver

Thank you to everyone who stopped by the Caring for the Caregiver table this last Sunday to help us discern how to meet the needs of caregivers. I enjoyed meeting so many of our parishioners. In addition to receiving

Please hold in prayer

CONTACT THE PARISH OFFICE, BULLETIN@STMKC.COM OR 942-2492 X202, TO ADD OR REMOVE NAMES FROM THE PRAYER LIST. IF YOUR NAME IS DROPPED OFF AND YOU ARE IN NEED OF ADDITIONAL PRAYERS FOR HEALING, CONTACT THE PARISH OFFICE. NAMES APPEAR EVERY OTHER WEEK.

...our family and friends in the military:

- | | | | | |
|-------------------------------|-------------------------------|----------------------------|-----------------------------|----------------------------------|
| Thomas Edwards
Seth Gulsby | John Hylander
Steve Janner | Sarah Katz
Bobby Murphy | Brian Owara
Alycia Pouch | Nathan Pouch
John P. Sullivan |
|-------------------------------|-------------------------------|----------------------------|-----------------------------|----------------------------------|

...our parishioners who are sick:

- | | | | | |
|---|--|---|--|------------------------------|
| Tom Bauer
Bill Cusick
Beth Dierks | Christine Edmunds
Mike Gaines
Gene Grillot | Donna Johnson
Kathy Lawson
Larry LeFebvre | Susie Reardon
Sam Snider
Ed Thomas | Gafo Viserio
Anita Wagner |
|---|--|---|--|------------------------------|

...our family and friends who are sick:

- | | | | | |
|---|---|---|--------------------------------------|------------------------------------|
| Melissa Hanover Cassady
Michael Dierks
Kerry Hartzell | Kyle Hartzell
Lynn Hoover
Jerry Job | Julie Aguirre Johnson
Noel Mehlo
Debbie Nichols | Lawrence T. Rouen III
Ron Simmons | Ava Smith
Rachael Cassady Smith |
|---|---|---|--------------------------------------|------------------------------------|

...our family and friends who have died:

Mary LeFebvre; Lynn Hoover, husband of Marilyn Wright-Hoover

your feedback on the emotional and physical struggles of caregivers, several professional caregivers and former caregivers of family members or neighbors offered to be involved in a supportive way.

If you were not able to stop by and would like to discuss ideas on how we can meet the needs of either yourself or others in this endeavor, please feel free to reach out to me at peggy@stmkc.com or 816-942-2492 x210. More will be forthcoming in the near future as to what the offerings will be. ~ Peggy Lucas

Take notice, STM men!

Do you have the will to be with Jesus in the Blessed Sacrament or Adoration at least a half-hour per week, in addition to Mass, to pray for the parish and school?

If yes, you are invited to join a new endeavor: the STM Prayer Brotherhood. There are no meetings to attend, no dues, just your weekly commitment in a church to pray for the sanctification of the parish and school, that we all grow in holiness. If you choose to join, please call Tom Bauer at 816-564-1763 or Bob Thedinger at 816-322-2629.



Catholic Charities Emergency Assistance Fund (CCEAF)

February 17-18

This collection funds the resources that help Catholic Charities support parish emergency assistance centers and food pantries provide food, and rent and utility assistance.

For more information about Catholic Charities of KC, and to read stories about some have been helped, visit catholiccharities-kcsj.org/.



View the video
Give online

Refugee Family Update

The STM Faith in Action Team partnered with Della Lamb to resettle our latest family to Kansas City. Again, your response was quick and the entire list of needed items including the \$3000 (needed to fund the family for rent, groceries and other necessities until they are able to get jobs) was accomplished in about 4 days.

Our family is a family of 4 (mom, dad, 3yr old boy and 2yr old girl) who arrived February 1st in Kansas City with a few other families. They were in temporary housing until today due to some things that needed atten-

tion in the house we set up for them on Saturday.

The family are refugees from Myanmar (originally Burma. The name was officially changed in 1989). It is a country in Southeast Asia. The family was living in a Malaysian Refugee Camp until they came to our community. We do not know how long they were there before being eligible to be resettled in a country that would welcome them. Myanmar has suffered decades of repressive military rule, widespread poverty and violence against ethnic minorities. 742,000 people fled Myanmar in 2017 amid waves of violence and genocide.

We cannot express enough how wonderful our community is to always be so responsive. On top of providing all needed items, 17 people showed up to help load the truck at STM and then set up the house with all the items so mom and dad and toddlers are truly walking into a cozy place to live.

Lenten Reflection: Caring for Creation

Conscious of our serious failure to serve the Earth—God's Earth—we hold hope in the covenant of today's readings, "I will recall the covenant I have made between me and you and all living beings, so that the waters shall never again become a flood to destroy all mortal beings." As we turn to the gospel selection, we find Jesus in the wilderness, the same wilderness where the tribe of Israel entered into covenant with God, and where, like the Israelites, Jesus' commitment was tested... Unlike the Israelites in days past, Jesus passed the tests. (Reflection written by Sister Helen Graham, MM. Read the entire reflection at maryknollogc.org).

Questions:

1. What is one way perhaps that you have failed to care for the earth and are in need of reconciliation?
2. What is one way you can serve the earth during Lent?

Green Team Tip of the Week

"And washed the chariot in the pool of Samaria..." (1 Kings 22:38)

Does your car have salt stains from winter driving? If so, you're probably thinking about getting it washed. You may be surprised to learn that it is better for the environment to go to a local car-wash rather than doing it yourself at home. In Canada, there are strict laws requiring garages to clean their dirty water before sending it back into the sewer system. When you wash your car yourself at home, all the harmful chemicals (soap, gas, oil and grease) go directly into the storm sewers which often discharge directly into rivers. Furthermore, getting your car cleaned at a car-wash also uses three times less water than doing it yourself with a hose at home, and you'll also save time!

January Financials

Regular - \$306,230.33 Plate - \$3,945.96
Facilities - \$4,288.00
Education Fund - \$747.00 School - \$1,077.40
Catholic Home Missions - \$4,480.00

Thank you for your continued contributions!

Former Saint Catherine's parishioners: Call the parish office if you need your 2023 tax statement.



SPRED Class

Monday, February 19, 6:30-8:30pm in More Hall

A group for the developmentally delayed meets about every other week to share their faith. Questions? Email Becky at bturner727@yahoo.com.

Growing in Faith Together (G.I.F.T.)

Tuesdays, 9-10:30am in the Bauman Library

G.I.F.T. is a group of ladies that meets after 8:15am Mass most every Tuesday. We read the gospel and talk about its meaning in our lives. If you are interested, please call Becky Turner at 816-550-3655.

Considering becoming Catholic or want to know more?

Tuesdays, 6:15-7:30pm in More Hall A

Journey with other individuals to learn more about the Catholic Church and to discern God's invitations offered through the Catholic Church. Sessions are open to adults and children, baptized and not. Questions? Contact Father Justin, frjhoye@stmkc.com or 816-942-2492 x204.

Feb. 20: Sacraments of Vocation: Marriage

School of Religion

Wednesdays, 6:15-7:30pm in More Hall

School of Religion provides catechesis for grade school children who do not attend Catholic school. An online registration form can be found at stmkc.com/sor. Questions? Email Susan at aquiel2000@yahoo.com.

Eucharistic Marian Conference

February 16-18 (Friday-Sunday)

As Pope John Paul II said, "The holy family is the beginning of countless other holy families. The history of mankind, the history of Salvation, passes by the way of the family." Saint Mary's Catholic Church (Father Kendall Ketterlin) will host this conference. The church is

located at 600 N Liberty St, Independence MO 64050.

Please register for this event: St Mary's office at 816-252-0121 or email smoffice@saintmarysparish.org.

50th KC Saint Patrick's Day Parade

Gathering: Sunday, February 18, 1-4pm

Come to KCIC, 3300 Broadway, KCMO to kick off our 50th parade. The 2024 parade dignitaries will be announced. Free admission. Food & beverages available for purchase.

The latest issue of Catholic Key is now available

The February/March issue of Catholic Key magazine is in the mail and live at CatholicKey.org. Watch for these stories and more:

- House of God | Saint Mary Parish, Independence in photos. (Father Kendall Ketterlin, formerly at STM, is Parochial Administrator.
- Black Catholic Spirituality | Deacon Ken Greene leads this new regular magazine feature as we journey through Black History Month.
- Our Lady of Perpetual Help and the Irish in Kansas City | The Kansas City Irish Parade and its Catholic roots celebrate 50 years in 2024.
- Recognition of What Matters Most | The Amalgamation of Saint Catherine of Siena Parish with STM, by Bob Sandford.

Sign up to be added to the mailing list and let us know what else you would like to see in future issues at catholickey.org.

More Friends (Parishioners 55+ years)

February Pilgrimage: Thu., Feb. 29, 8:30am-4:30pm

Charlie Lynn & Beth Sullivan are putting together a Missouri pilgrimage to visit:

- Saint Ann's Church in Plattsburg (just celebrated 135 years as a parish),
- the Benedictine Sisters of Mary, Queen of Apostles in Gower, MO (where Sister Wilhelmina's grave is)
- the Cathedral in St. Joseph (where Father Benjamin Fenlon has been assigned)

Saint Ann's and the St. Joseph Cathedral are both points on the diocesan Pilgrimage Passport.

The day, open to parishioners who have renewed their More Friends membership, will be carpooling to the above locations and eating lunch in St. Joseph. Mass will also be included. Plan to have money for lunch and the carpool driver!

Call/Text Beth Sullivan at 816-547-5541 to express your interest in driving or riding.

Membership: It's not too late!

To join More Friends, contact Beth. Dues for the 2024 year are only \$10!

Lenten Offerings beginning in February

Lent
AT STM

Lenten Art Participation Project

Through the Lenten season, the Art & Environment Committee invites people to bring twigs (no longer than six inches, please!). There is a display on the round table in the narthex where twigs may be added. The twigs are to unite your own slivers of crosses to those of Jesus'.

\$20 for Lent

The recipient for this year's \$20 for Lent campaign is the Little Sisters of the Poor. They are an international congregation of Roman Catholic women religious, with a local center in KCMO. They were founded in 1839 by Saint Jeanne Jugan to serve the elderly poor. The last time STM took up a collection for the Little Sisters was 2018. For more information on this mission, please visit littlesistersofthepoorkansascity.org/.

STM Respect Life Baby Shower

Ash Wed. through Sunday, Feb. 25, in the Narthex

The Respect Life Committee would like to help Saint Mary's Home for Unwed Mothers in Liberty, MO and needs your help! Their wish list includes:

- #5 baby diapers
- Baby wipes
- Cloud Island changing pad liner (gray edge)
- Diaper Genie Complete Pail (white)
- Dr. Brown's narrow baby bottle nipples level 4 fast flow (9-month)
- Dapple bottle soap
- Seventh Generation tub and tile cleaner
- All brand free clear liquid laundry detergent with OXI stain remover
- Bounty paper towels
- Vicks Vapo pads refill, soothing menthol
- Infant Tylenol pain & fever reducer liquid, dye-free
- Homedics sound machine
- Shea moisture Jamaican Black castor oil strengthen & restore conditioner
- Suave professional Keratin infusion soothing shampoo and conditioner



NOTE: St. Mary's is registered at Target.com. Enter "St. Mary's Home for Mothers, Liberty, MO" under "Organizations."

Items may be left in the play pens set up in the narthex. Thank you for helping to honor mothers and their babies!

Stations of the Cross

Fridays of Lent, 5pm

February 16 - STM Knights of Columbus
February 23 - Monday Rosary Group

Fish Fry Fridays

Feb. 16 & 23; March 1, 8, 22; 5-7pm

Cost: \$10/senior, \$12/adult, \$35/family.
Desserts: \$2 each.

Lenten Care Notes Available

A Lenten Journey Through Grief
Longing for God - The Grace of Lent
40 Ways to Enrich Your Lenten Prayer
The Season of Lent: From Ashes to Easter
Lent - A Time to Pray for Others
Praying the Bible During Lent

Lenten-themed Lighthouse Materials

The Woman at the Foot of the Cross (CD)
Family & Prayer Life During Lent (CD)
The Imitation of Christ (Book)

Overview of the Minor Prophets of Lent

Sundays (Feb. 18 & 25; Mar. 3 & 10), 10:05-10:50am



Join Father Justin in More Hall for a brief overview each week of one of the minor prophets who appear during our Lenten Journey.

February 18th - **Joel**

February 25th - **Jonah**

March 3rd - **Micah**

March 10th - **Hosea**

Bible Study: Discover the Story of Salvation

Mondays (Feb. 19-Mar. 25), 6-7:30pm in More Hall

This Lent, rediscover the one story that really matters, revealed through Scripture—and your place in it! This Lenten Bible Study will guide you through the big picture of salvation history. Re-encounter God's love for his people, reclaim the story of salvation as your story, and learn to share God's story with others. Sessions include videos with Dr. Edward Sri and Curtis Martin, followed by small group discussion. All are welcome! Please bring a bible, a pen/pencil, and something to write on. To reserve a seat, contact Hayley Shaver at 816-942-2492 x223 or hayley@stmkc.com.





February/March 2024

Mass Schedule for Lent
Monday-Friday, 6:15AM & 8:15AM
Saturday, 8:15AM & 4PM Vigil
Sunday, 7:30AM, 9AM, 11AM

Sun	Mon	Tue	Wed	Thu	Fri	Sat
Confession Schedule for Lent Tuesday-Thursday, 5-6PM* Saturday, 7:15-8AM & 3-3:45PM * Not Thursday, March 21	Private Prayer Hours for Lent Monday-Friday, 6AM-6PM Saturday, 7AM-5PM Sunday, 7AM-9PM		14 Ash Wednesday Masses at 6:15AM, 8:15AM, 6PM \$20 for Lent begins Baby Shower begins	15	16 Stations of the Cross, 5PM Fish Fry, 5-7PM	17
18 Catholic Charities Collection Overview of Minor Prophets, 10:05-10:50AM	19 Salvation History Bible Study, 6-7:30PM	20	21	22	23 Stations of the Cross, 5PM Fish Fry, 5-7PM Fresh Fire, 7-9PM	24
25 Overview of Minor Prophets, 10:05-10:50AM Baby Shower ends	26 Salvation History Bible Study, 6-7:30PM	27	28 Lighthouse Books & CDs Are available in the narthex, free of charge.	29	March 1 Stations of the Cross, 5PM Fish Fry, 5-7PM	March 2
3 Overview of Minor Prophets, 10:05-10:50AM	4 Serve at Morning Glory, 6:30-8:30AM Salvation History Bible Study, 6-7:30PM	5	6	7	8 Stations of the Cross, 5PM Fish Fry, 5-7PM	9
10 Catholic Relief Services Collection Overview of Minor Prophets, 10:05-10:50AM Movie: Saint Teresa, 2PM	11 Serve at Morning Glory, 6:30-8:30AM Salvation History Bible Study, 6-7:30PM	12	13 Lenten-themed Care Notes Are available on the north side of the narthex.	14	15 Stations of the Cross, 5PM	16
17 Presentation by CEO of World Apostolate of Fatima, 2PM	18 Serve at Morning Glory, 6:30-8:30AM Salvation History Bible Study, 6-7:30PM	19	20 Easter Sunday Masses (March 31) 7:30AM, 9AM, 11AM	21	22 Stations of the Cross, 5PM Fish Fry, 5-7PM Fresh Fire, 7-9PM	23
24 Palm Sunday* *Sign Interpreted Masses Palm Sunday, 11AM Holy Thursday, 7PM Good Friday, 7PM	25 Serve at Morning Glory, 6:30-8:30AM Salvation History Bible Study, 6-7:30PM	26	27	28 Holy Thursday Mass of the Lord's Supper, 7PM Adoration until 10PM	29 Good Friday* 7 Last Words of Christ, Noon Holy Land Collection Evening Service, 7PM	30 Holy Saturday Easter Vigil Mass, 8PM

City On A Hill (COAH) Young Adult Events

Visit kansascityonahill.org/ for more info. Click on Get Involved to sign up for The Loop, a weekly email.

Questions & Queso

Tue., Feb. 20, 7-9pm

Guatemala Trip

Sat., July 20- Fri., July 26

Info Session: Wed., Feb. 21, 6-7pm

Sisterhood Open Bible study

Thu., Feb. 29; Mass at 5:30pm, Study 6-7pm

Undivided Retreat

March 8-10 Friday-Sunday

Regular Registration: \$75

Catholic Challenge Sports

Kickball Registration - Now Open!

Games: Saturdays (March 16-May 11), 9am-Noon

Registration through March 2: \$45

Safe Environment

Protecting God's Children Training in More Hall!

Thu., Feb. 22; Tue., Apr. 9; Wed., Jun. 19, 6-9pm

Adults who work with minors are required to attend in-person or Zoom Protecting God's Children workshops. Three workshops have been set up to be held in More Hall! To register for any of these, set up an account on virtus.org. Other requirements, accessed through Virtus, are listed on the front cover of this bulletin.

Parish Calendar of Events

Fri., Feb. 16 - Stations of the Cross, 5pm, Church

Fish Fry, 5-7pm, More Hall

Sun., Feb. 18 - 1st Sunday of Lent

Catholic Charities Emergency Assistance Appeal

Overview of Minor Prophets, 10:05-10:50am, Hall

Mon., Feb. 19 - President's Day

Parish Office closed

Salvation History Bible Study, 6-7:30pm, More Hall

SPRED Class, 6:30-8:30pm, More Hall

Living Waters, 7-10pm, Church & More Hall

Tue., Feb. 20 - G.I.F.T., 9-10:30am, Bauman Room

OCIA, 6:15-7:30pm, More Hall A

Wed., Feb. 21 - Casseroles for Uplift, 1:30-3pm

Grief Support Group, 6-7pm, Parish Office

School of Religion, 6:15-7:30pm

Choir Rehearsal, 7-8:30pm, Choir Loft

Thu., Feb. 22 - Protecting God's Children, 6-9pm

Guatemala Action Group mtg., 6pm, Parish Office

Fri., Feb. 23 - Scout Fish Fry, 5-7pm, More Hall

Stations of the Cross, 5pm, Church

Fresh Fire, 7-9pm, Church

Sat., Feb. 24 - Living Waters, 9am-1pm, Church & Hall

Sun., Feb. 25 - 2nd Sunday of Lent

Baby Shower - last day to leave items in Narthex

Overview of Minor Prophets, 10:05-10:50am, Hall
Mon., Feb. 26 - Salvation History Study, 6-7:30pm, Hall
Living Waters, 7-10pm, Church & More Hall
Tue., Feb. 27 - G.I.F.T., 9-10:30am, Bauman Room
School Financial Registration, 2-5:30pm, Parish Office
OCIA, 6:15-7:30pm, More Hall A
Wed., Feb. 28 - School of Religion, 6:15-7:30pm
Choir Rehearsal, 7-8:30pm, Choir Loft

NOTE: Parish Office phones may be down 1-2pm on Friday, February 16, due to computer system updates. Email continues to work! Office is closed Monday, February 19.

STM School

Linda Crosthwait, Principal

816-942-5581 STMKC.COM/SCHOOL



Office Hours

Mon.-Thurs., 8am-3:45pm; Fri., 8:30am-3:30pm

STM School Registration: Now Open!

Register before March 8 for the 2024-25 school year!

Registration Fee for 1 student - \$2,200

STM Parishioners must have a 2024 pledge on file.

Tuition for 1 student - \$7,100

Discounts are given to multiple children in the same family.

Pre-School & PreK

Registration Fee - \$330/child (ages 3 & 4)

5-day - \$7,100

3-day - \$4,850

After March 8, there is a \$200 late fee.

To complete the financial piece, you may come to the parish office Tuesday, February 22 or March 5, 2-5:30pm.

MOScholars Tax Credit/Scholarships

MO residents can direct HALF of their annual state income taxes to be used for scholarships for children to attend Catholic Schools - all at NO COST to the contributing resident! Visit brightfuturesfund.org or find a brochure in the narthex to make a contribution or to see if you qualify for a scholarship.

STM School Dates to Note

Thu.-Mon., Feb. 15-19 - No School

Tue., Feb. 20 - Home & School mtg., 6:30-8pm

Wed., Feb. 21 - Dine Out Night at Freddy's

Fri., Feb. 23 - Booster Club Bags Tournament, 6:30pm

Thu., Feb. 29, 6-8pm - All School Skate at Skate City

March 8-18 - Spring Break

Dine Out Night at Freddy's!

Wednesday, February 21, 5-9pm

Come and enjoy your Freddy's favorites while supporting a great cause: STM Home and School! STM will receive 15% of fundraiser sales, including both digital and physical orders! To participate digitally, order on the Freddy's mobile app or website using the code GIVEBACK. To participate at the restaurant, tell the cashier of your participation (before payment).

STM Boys Volleyball Registration

To sign up 4th-8th grade boys for volleyball, please go to PLKC.org and click on the "register now" link. The season is short, running March 18-May 17. With Missouri High schools making boys volleyball an MSHSAA activity (a letter sport) and Kansas schools not far behind, this is a great opportunity to get your boys started in this growing sport.

Please sign up soon to allow time for evaluations, if needed, and to secure coaches. Volunteer coaches are needed for grades 4-5! Email jkalsmith@gmail.com if interested.

PLKC Girls Flag Football: Grades 3rd-8th

Visit cyojwa.org/current-programs to sign up 3rd-8th grade girls. The season runs March 4-May 18.

For more information on the program please visit cyojwa.org/content/29293/Football-Girls-Flag.

2nd Annual Bingo for Books: Save the date!

Friday, March 1, 6:30-8:30pm, Flanagan Hall

\$20/family, \$5 for extra cards

Prizes for the highest grade and class attendance.

BYOB and a dessert and snack to share!

STM Auction Fund-a-Need continues

It's not too late to contribute!

Goal: \$200,000



Vacation Bible School

STM will bring back Vacation Bible School this summer, the week of June 24. Plans have already begun! To volunteer, contact Hayley Shaver at hayley@stmk.com or 816-942-2492 x223.

Summer Cyclones Summer Camp

Camp will not be held this summer.

Parish Office Staff



Sharon Arnett
Liturgy Coordinator
x208 sharon@stmkc.com



Peggy Lucas
Pastoral Associate/Outreach
x 210 peggy@stmkc.com



Mary Begnaud
Receptionist
x201 mary@stmkc.com



Father Christian Malewski
Sacramental Minister
x203 cmalewski@olog.org



Scott Dulle
Building & Grounds Director
dulle_scott@stmcyclones.org



Bob Sandford
Publications & Music Director
x212 bob@stmkc.com



Father Justin Hoyer
Pastor
x204 frjhoye@stmkc.com



Joan Sandford
Office Manager
x202 joan@stmkc.com



Becky Johnson
Finance Coordinator
x224 becky@stmkc.com



Father Paul Sappington
In Residence
frsappington@smacatholic.org



Judy Kashka
Funeral & Wedding Liturgist
judy@stmkc.com



Hayley Shaver
Evangelization & Discipleship
x223 hayley@stmkc.com



Tim Waris
Business Manager
x218 tim@stmkc.com

Parish Office Hours (until further notice)

Office Hours: M-W 8:45am-3:30pm; T-Th 8:45am-5pm
F 8:45am-1pm

Finance Ministry Team

Justin Hicks, Chair

Mark Meierhoffer

Bruce Gregg

Stefanie Bresette

Laura Christopherson

Parishioner volunteers serve for three-year terms.

Questions? Email FinanceCouncil@stmkc.com.



Diocesan Ombudsman

Joe Crayon crayon@ombudsmankcsj.org or
816-812-2500

To register as a member of Saint Thomas More Parish...

...go to stmkc.com/registration, contact the parish office or pick up a registration form on the Information table in the church narthex.

Safe Environment Information

The Diocese of Kansas City~Saint Joseph is committed to combatting sexual abuse in the Church. If you are a victim of sexual abuse, or if you *observe or suspect* sexual abuse:

- Call the **MO Child Abuse Hotline**, 1-800-392-3738 (if the victim is currently under the age of 18), or **KS Protection Report Center**, 1-800-922-5330, and
- Contact your **local law enforcement agency** or call 911, and
- After reporting to these civil and law enforcement authorities, report suspected *sexual abuse of a minor or vulnerable adult* to the **Diocesan Ombudsman, Joe Crayon**, at crayon@ombudsmankcsj.org or 816-812-2500 if the abuse involves a priest, deacon, employee or volunteer of the Diocese of Kansas City~Saint Joseph.

The diocese has a sincere commitment to providing care and healing resources to victims of sexual abuse and their families. Please contact Whitney True-Francis, the **Victim Advocate** at victimadvocate@diocesekcsj.org or 816-392-0011 for more information.

FOR ADDITIONAL INFORMATION, contact:

Joan Sandford, Parish Safe Environment Coordinator, safety@stmkc.com or 942-2492 x202, OR

Meredith Blair, School Safe Environment Coordinator, blair_meredith@stmcyclones.org or 942-5581.

Mass Intentions

Mon: 2/19	6:15AM John Helgesen 8:15AM Brian Anselmo [†]
Tues: 2/20	6:15AM Stefany Avenel 8:15AM Beverly Allen [†]
Wed: 2/21	6:15AM Pat Hughes[†] **8:15AM Tim Steffens[†]
Thur: 2/22	6:15AM Harry Dierks[†] 8:15AM Patricia Seufert [†]
Fri: 2/23	6:15AM Dolores Rabuse[†] 8:15AM Mary Tarwater [†]
Sat: 2/24	8:15AM Annette & John Lofthouse[†] 4:00PM Josephine Badale [†]
Sun: 2/25	7:30AM Our Parishioners 9:00AM Barney & Rosemarie Maguire [†] 11:00AM Joann & Larry Rouen[†]

[†] Deceased

****School Mass**

To request a Mass intention, stop by the parish office or call 816-942-2492. Suggested donation per Mass is \$10.

SCRIPTURE READINGS

For the daily readings, visit usccb.org/bible/reading. Have the readings sent to your email each day, hear the readings read to you, or watch a video with a reflection based on the readings.



TJ BRENNAN - *Parishioner*

816.394.2224

tjbrennan@cekinsurance.com

www.cekinsurance.com

LET'S GROW YOUR BUSINESS

Place Your Ad Here
and Support Our Parish!

CONTACT ME
Jon Becker

jbecker@4LPi.com
(800) 950-9952 x2536



Since 1966

7735 Wornall • 816.523.4566

Steve and Aimee Gromowsky

Sam and Mary Gromowsky

SHORT STAFFED?

Place an ad here to find new
local talent for your business.



CALL 800-950-9952

The Genuine. The Original.



Overhead Door Company of Kansas City™

A **SPACE** Company

REPAIR + REPLACE GARAGE
DOORS AND OPENERS

RESIDENTIAL DOORS

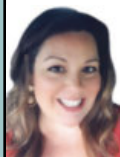
FREE ESTIMATES

913-361-6023

OverheadDoorKansasCity.com



SERVING KANSAS CITY **SINCE 1927**



Shelly Balthazor

Real Estate Specialist, Parishioner

816-591-5277

shellyb@reecenichols.com



*1 Real Estate Team in MO & KS

*1 KC Real Estate Team in Homes Sold

*1 in Sales Volume

*3 Nationally Ranked Team in the US

*740+ Million in Sales Volume in 2021

**SUPPORT OUR
ADVERTISERS!**

DOES YOUR NONPROFIT ORGANIZATION NEED A NEWSLETTER?

Engaging, ad-supported
print and digital newsletters
to reach your community.

Visit lpicomunities.com




For ad info. call 1-800-950-9952 • www.4lpi.com

St. Thomas More, Kansas City, MO

C 4C 02-0710



SUPPORT OUR ADVERTISERS!


JEFF THOMPSON
ORTHODONTICS

A Fresh and Polished Approach to Oral Health

4851 WEST 134TH STREET • LEAWOOD • KANSAS 66209-7803
 913.681.8300 • WWW.JEFFTHOMPSONORTHO.COM

JEFFREY J. THOMPSON, D.D.S., M.S.
 DIPLOMATE AMERICAN BOARD OF ORTHODONTICS


WALK-IN CLINIC
 for sports injury or fractures

M-F: 9am -11am, 1pm - 3pm. Ages 0 -16

pediatric orthopaedic surgery Associates

5250 W. 94th Terrace, Prairie Village, KS 66207
913-451-0000
 www.pedorthokc.com

Like a good neighbor **State Farm**
State Farm is there.®

13012 Fuller
 P.O. Box 230
 Grandview, MO 64030

 **Larry B. Langford,**
 CLU CHFC

Bus.: 816-761-8711
 Res.: 816 217 8112
 larry.langford.b5u9@statefarm.com

STATE FARM INSURANCE COMPANIES
 HOME OFFICES BLOOMINGTON, ILLINOIS


Tina R. Gaughan
 REALTOR®, SRES

RE/MAX®
 State Line Real Estate



Direct Line: (913) 312-3630
 Mobile: (816) 835-3230
 TinaGaughan@gmail.com
 TinaGaughan.com
 11251 Nall Ave. • Leawood, KS 66211

Each Office Independently Owned and Operated



 **Catholic Family**
CREDIT UNION

Full Service For All Your Needs
 816-444-7440
 9237 Ward Parkway, Ste 114
 www.catholicfamilycu.com
 Savings Insured by the NCUA up to \$250,000


SIDING WINDOWS DOORS
Cornerstone
 HOME IMPROVEMENTS

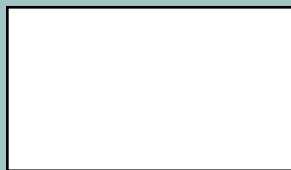


816-737-0601 / 913-244-6046
 www.CornerstoneWindowsKC.com


KANSAS CITY
MONUMENT

6842 Troost Ave
 Kansas City, MO 64131
816-333-0075
 kcm monument1888@outlook.com


 Monday - Friday:
 9:30 AM - 4:00 PM
 Saturday:
 10:00 AM - 1:00 PM



learn. grow. soar.

FORMING MEN AT THE ROCK
 ROCKHURST HIGH SCHOOL

WWW.ROCKHURSTHS.EDU/ADMISSIONS


PILEGGI PAINTING

Exterior - Interior - Decks - Residential & Commercial
Frank Pileggi - Owner
 www.PileggiPainting.com
 frank@pileggipainting.com | 913-558-5204

WILLS & TRUSTS • ESTATE PLANNING

Christopher Gaughan, Parishioner
 ESTATE PLANNING ATTORNEY


• Estate Planning • Business Succession
 • Wills & Living Trusts • Powers of Attorney
 • Farm & Ranch Planning • Special Needs Trusts

CALL FOR A FREE CONSULTATION!


GAUGHAN & CONNEALY
 ESTATE PLANNING ATTORNEYS
 4400 College Blvd, Suite 190 | Overland Park, KS 66211
 (913) 262-2000 | www.MidwestEstatePlan.com

ADT-Monitored Home Security
 Get 24-Hour Protection From a Name You Can Trust

- Burglary
- Flood Detection
- Fire Safety
- Carbon Monoxide

 Authorized Provider **SafeStreets** **833-287-3502**




 Mary Owens Boesen
 Parishioner
 Life & Health Insurance Sales

MEDICARE

Let me help you! 30 years experience
816-942-0666 • mboesen@kc.rr.com

catholicmatch®

Missouri



CatholicMatch.com/MO

WE APPRECIATE OUR ADVERTISERS!

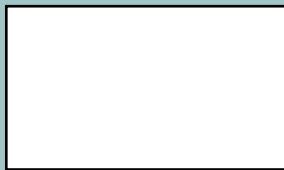
IF YOU LIVE ALONE

MDMedAlert!™ As Low As **\$19⁹⁵** /mo.

✓ Ambulance ✓ Police/Fire
 ✓ Family/Friends ✓ GPS & Fall Alert

CALL NOW 800.808.9294 • md-medalert.com





 **Tran Tax**

13035 B Holmes Rd.
 (816) 575.7725 | trantax.com

STRATEGY • ADVANTAGES • EXPERIENCE


FREE AD DESIGN
 with purchase of this space

CALL 800-950-9952

WE'RE HIRING!
 AD SALES EXECUTIVES

BE YOURSELF.
 BRING YOUR PASSION.
 WORK WITH PURPOSE.

- Paid training
- Some travel
- Work-life balance
- Full-Time with benefits
- Serve your community



4LPI

Contact us at
 careers@4lpi.com or
 www.4lpi.com/careers

Old Mill Grooming
 Let us pamper your pet

(816) 941.8484 | 13031 Holmes Rd.




Robin's Nest
 Salon & Boutique

(816) 943-0005 | 13035 C Holmes Rd.



KC's Leading Decking & Andersen Window Supplier

Mike McGlinn
Parishioner

816-331-2211

OwenLumber.com

WE APPRECIATE OUR ADVERTISERS!



Your financial partner throughout your life.

Matthew Pomianek, AAMS®, Financial Advisor, Parishioner
5000 W 95th St Ste 103
Prairie Village, KS 66207
913-648-6084
matthew.pomianek@edwardjones.com

Member SIPC

Edward Jones
MAKING SENSE OF INVESTING



Muehlebach Funeral Care & Cremation Services

MUEHLEBACH
FUNERAL CARE

Parishioners:
Steve & Nicole Pierce

Jordan Pierce
STM Class of 2011

Jenny Mertes

Tom Reagan

816-444-2060

www.muehlebachchapel.com

"Our Family Dedicated to Serving Yours."

Eckhard Preuss
Agent

8009 E. 171st Box 645
Belton, MO 64012-0645
Bus 816.331.4288 Fax 816.331.2907
eckhard.preuss.b5xr@statefarm.com



Better Homes
REAL ESTATE



Judy Sheaman, ABR

Sales Executive
with 26 Yrs. Experience

Parishioner

Licensed in Kansas & Missouri

Office: 913-981-2827
Cell: 816-304-2888
KC Magazine

"Five Star Real Estate Agent"
for overall customer satisfaction since 2005

Carpets | Area Rugs | Upholstery
Hardwood Floors | Air Ducts
Tile & Grout | Residential/Commercial
WE CLEAN GREEN | **zerorez**
(816) 425-3655
www.zerorezkc.com Steven Phelps

LET'S GROW YOUR BUSINESS

Place Your Ad Here and Support Our Parish!

CONTACT ME **Jon Becker**

jbecker@4LPi.com • (800) 950-9952 x2536

ALLIED CONCRETE PRODUCTS
12800 2nd St. Grandview
816-966-8836
Judy, Pete, & Amparo Furey
Parishioners

RESIDENTIAL SEWAGE TREATMENT COMPANY, INC.
816-966-8885
Kathy Maguire & Tom Fritts
Parishioners



Part-time Child Care Jobs
Now Hiring!

Apply at: kclinc.org/parttimejobs

LINC Caring Communities Sites
North Kansas City - Kansas City Public Schools
Center - Hickman Mills - Grandview

Place Your Ad Here and Support our Parish!

Instantly create and purchase an ad with

AD
CREATOR
STUDIO



4lpi.com/adcreator

MCGILLEY
MEMORIAL CHAPELS
SINCE 1899

Funerals | Cremations | Receptions | Celebrations

"Celebrating Lives"

Patrick McGilley | Joe Haster | 816-942-6180 | www.mcgilleystatelinechapel.com



Landscape Design & Installation

Let me design your dream landscape now!

Book now

913-515-4166

MALACHY@CONNORLANDSCAPING.COM

ACCESS YOUR POTENTIAL

AVILA
UNIVERSITY

Avila.edu/catholic

FOUR WAY PLUMBING
SERVICE & DRAIN CLEANING
Same Location since 1979

816-331-1650

Nick & Marion Biondo, Jr. Plumbers



SUPPORT OUR ADVERTISERS!



John Sweeney CCIM
Reece Commercial
Commercial Real Estate

(913) 945-3718 (913) 461-6326 mobile

John@ReeceCommercial.com

Brokerage Investment Development Consulting

BURIAL • ENTOMBMENT • CREMATION • TRADITIONAL CEREMONIES • CELEBRATIONS OF LIFE

CULLEN
FUNERAL HOME, INC.®



PLAN AHEAD
WE'LL TAKE THE FIRST STEP WITH YOU.

612 W Foxwood Dr
Raymore, MO 64083
(816) 322-5278



- Auto
- Home
- Life
- Commercial

We are an Independent Agency With Over 30 Years of Experience



NESTEL
INSURANCE AGENCY
"Where Customer Service Counts"

Mary Nestel
816-361-6442

9233 Ward Parkway Ste 124
Kansas City, MO 64114

www.nestelinsurance.com
info@nestelinsurance.com



PARISHIONER OWNED
JOE & MAGGIE TULIPANA

SHAWNEE
13214 W 62ND TERR, SHAWNEE, KS 66216

VILLAGE WEST (INSIDE NEBRASKA FURNITURE MART)
1601 VILLAGE WEST PKWY, KANSAS CITY, KS 66111

WE CATER! 913.268.488Q
catering@blindboxbbq.com

BLIND BOX
BBQ
BLINDBOXBBQ.COM



For ad info. call 1-800-950-9952 • www.4lpi.com

St. Thomas More, Kansas City, MO

A 4C 02-0710