



OUR **MISSION** IS TO PROVIDE A WELCOMING, INCLUSIVE, AND LOVING COMMUNITY BY PROCLAIMING AND LIVING GOD'S WORD THROUGH WORSHIP, EDUCATION, AND SOCIAL JUSTICE.

SAINT THOMAS MORE PARISH

11822 Holmes Road, Kansas City, Missouri 64131 • stmkc.com

November 17, 2024



BULLETIN ONLINE

this and last week's at stmkc.com

Subscribe at stmkc.com/emailme →



MASSES

WEEKDAY: Mon & Fri 8:15am,
Tues, Wed, Thu 6:15am & 8:15am
First Sat 8:15am

WEEKEND: Sat 4pm, Sun, 7:30am, 9am & 11am

MASS ONLINE CONTINUES

RECONCILIATION

Individual Confessions: by appointment and Tuesdays and Thursdays, 5-6pm

Saturdays, 3-3:45pm

First Saturdays, 7:15-8am

OUR CLERGY

Father Justin Hoye, Pastor

Father Pius Wesonga, AJ, Associate Pastor

In Residence: Father Paul Sappington

AT THE PARISH OFFICE

Office Hours:

Mon. & Wed. 8:45am-1pm, 2-3:30pm*

Tues. & Thurs. 8:45am-1pm, 2-5pm*

Friday 8:45am-1pm

* lunch hour 1-2pm

Parish Office 816-942-2492

Office directory at stmkc.com and p.9

AT THE SCHOOL OFFICE

Linda Crosthwait Principal

Tracy Stewart Assistant Principal

Office hours: Mon.-Thurs., 8am-3:45pm;

Fri., 8:30am-3:30pm

School Office 816-942-5581

School fax 816-941-2450

School email directory at stmkcschool.org

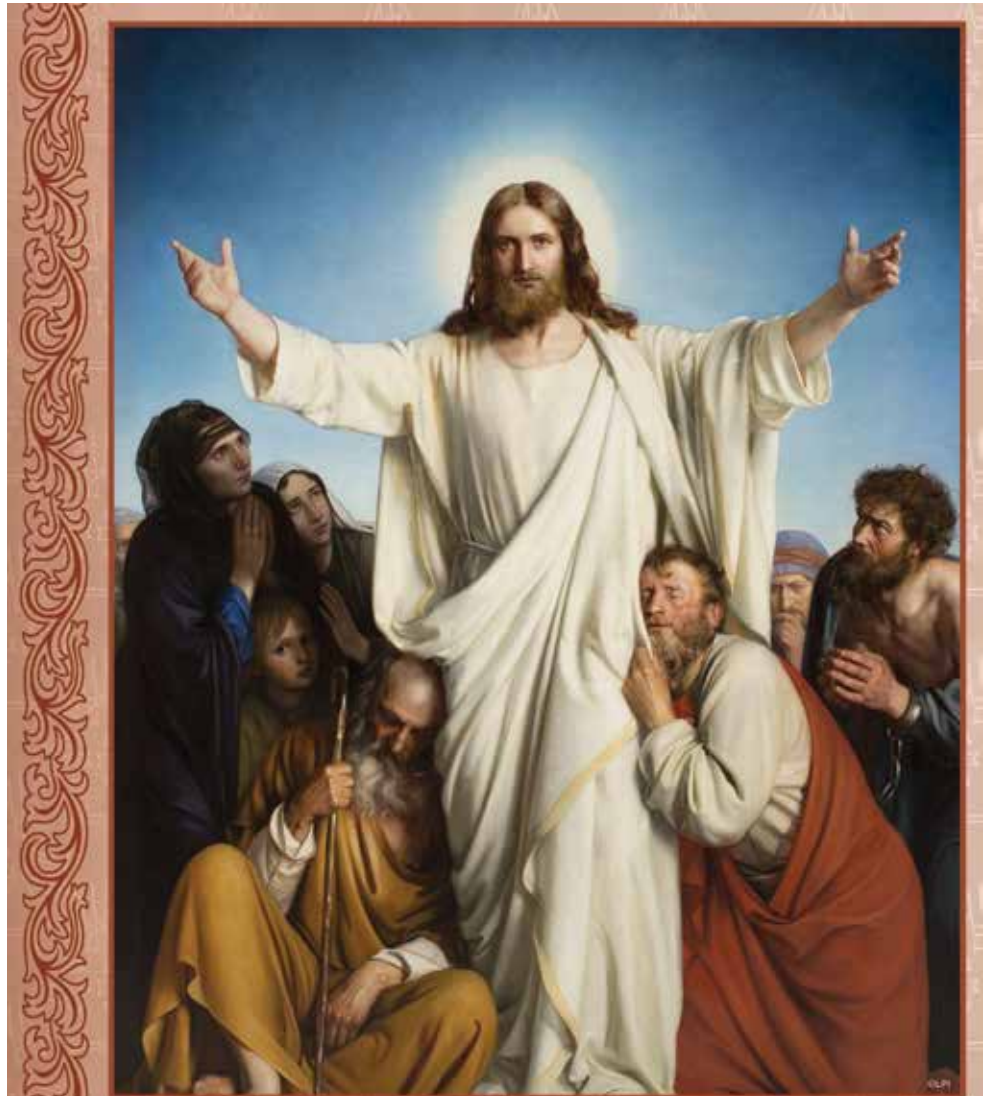
SCHOOL TOURS: contact Principal Linda Crosthwait at 816-942-5581 or crosthwait_linda@stmcyclones.org

SAFE ENVIRONMENT

All employees and volunteers working with minors are required to:

- Create an account at virtus.org
- Attend a Protecting God's Children workshop
- Complete a mandated reporter training
- Submit to a background check
- Read the online Policy on Ethics and Integrity in Ministry

For more Safe Environment information, including reporting and victim resources, see page 10.



33rd SUNDAY *in ordinary time*

"Heaven and earth will pass away, but my words will not pass away." - Mk 13:31

Excerpts from the Lectionary for Mass ©2001, 1998, 1970 CCD



WITH STAFFED NURSERY



FRIDAY, NOV 22 7-9PM



THE PASTOR'S PEN

Faithful People of Saint Thomas More,

First, thank you to those who have returned stewardship pledge forms to both the parish and the diocese. The response of all households helps us immensely in being good stewards of our financial resources, and enables us to connect the talents of individual parishioners with specific demands and opportunities in ministry.

Secondly, I'm very excited for participants - over 40 - who began their six week small group experience that began this week. There are six groups meeting, led by numerous lay leaders, reviewing the salvation message and its power in our lives.

Last week, I, along with several members of our community, attended the ribbon cutting for Catholic Charities' "Serve & Lift" center, occupying the former Saint Matthew's campus on Longview Road. Several of our parishioners donate their time in their pantry, we have parishioners who are employed by the ministry, and our parish recently participated in their annual 5K, with the team, "Peggy's Pacers," led by Pastoral Associate, Peggy Lucas.

To celebrate STM's second place (financial) finish among all teams, we're having treats in the narthex this weekend. Thank you to donors and participants who helped Peggy's Pacers surpass their goal this year!

This weekend is the feast of Saint Elizabeth of Hungary, a patron of bereavement ministry. To mark the occasion, members of our funeral lunch ministry will be in the narthex between weekend Masses, inviting parishioners to consider joining their efforts to either coordinate or volunteer in this spiritual work of mercy. We average at least one funeral a week, and the offering of lunches - there is no cost to the families - is a great sign of our parish's solidarity with them in a time of loss.

Father Justin

SAINT THOMAS MORE PARISH Annual Stewardship

STM Annual Stewardship & Diocesan Annual Appeal

Parishioners are encouraged to prayerfully consider both asks and to discuss a response with spouses and children. What we do with our many blessings of time, talent and treasure in our lives is a very important part of life and how we live our faith!



Commitment Weekend has passed. If you have not returned your pledge form, please do so soon! Your returned form helps us to budget responsibly. For those who contribute online, it also lets us know you intend to continue your contribution. Please return pledge forms by the end of this calendar year so future contributions can be applied toward your pledge.

If you have not received a packet, contact Joan Sandford, joan@stmkc.com or 816-942-2492 x202. Or pledge online by using the QR code above or visiting stmkc.com and clicking on the Annual Stewardship box.

THANK YOU for all you do at and for Saint Thomas More: your prayers and continuing formation, supporting the many ministries of the parish, caring for the school students and their families, keeping the utility bills paid, and always ready to reach out to help others in need. STM is an amazing parish because of you and your support!

Annual Stewardship Pledge Report

Goal: 100% Participation

As of 11/12/24, 257 households returned pledge forms

Diocesan Annual Catholic Appeal (ACA)

Goal: 100% response rate

As of 11/12/24 :

- 104 (7%) STM households pledged \$96,285
- Across the diocese 2,758 households pledged \$948,633 toward a \$2 million goal.

Bulletin Deadline Changes

Bulletin	Due Date
November 24	Monday, Nov. 18, 9am
December 1	Thursday, Nov. 21, 9am
December 8	Monday, Dec. 2, 9am
December 15	Monday, Dec. 9, 9am
December 22	Thursday, Dec. 12, 9am
(December 22 is the Christmas bulletin.)	

Come Home to Communion



Daily Masses

Monday, 8:15am
 Tuesday, 6:15 & 8:15am
 Wednesday, 6:15 & 8:15am
 Thursday, 6:15 & 8:15am
 Friday, 8:15am
 First Saturday, 8:15am

Weekend Masses:

Saturday Vigil, 4pm
 Sunday, 7:30am, 9am & 11am

Sign Interpreted services: 2nd Sundays at 11am

Masses are recorded daily; find them at stmkc.com or youtube.stmkc.com.

The Light is on for You

Confessions are offered in the reconciliation room.

Tuesday, 5-6pm Thursday, 5-6pm
 Saturday, 3-3:45pm First Saturday, 7:15-8am
 and by appointment

Church Hours for Private Prayer

Monday - Friday, 6am-9pm
 Saturday - Sunday, 7am-9pm

Pray the Rosary with Others

Sundays, after 9am Mass

Join with the Knights of Columbus in prayer.

Monday-Friday, after the 8:15am Mass, Chapel

All are welcome to pray the rosary or the Fatima devotions with others on first Saturdays, after 8:15am Mass.

Eucharistic Exposition at STM

Sundays, Noon-9pm in the Church

Regular time spent with the Lord in Adoration can be life changing! First Sundays, Noon-1pm, has music.

Go out of your way. How can you make Adoration a regular part of your weekly rhythm of prayer? Search for opportunities to sacrifice other things for that prayer time with Jesus--and watch how he blesses you.

Prayer Intentions

Pope Francis: Let us pray that all parents who mourn the loss of a son or daughter find support in their community and may receive peace of heart from the Spirit of Consolation.

Bishop Johnston: Let us pray for peace in the Holy Land.

Fresh Fire Eucharistic Adoration

Friday, November 22, 7-9pm in the Church

Looking for a wonderful experience of prayer with others? Fresh Fire is an evening of candlelit Eucharistic Adoration with praise and worship music, personal testimony, and prayer teams. Experience the power of Jesus' healing presence! **Nursery will be staffed.**

Please hold in prayer

CONTACT THE PARISH OFFICE, BULLETIN@STMKC.COM OR 942-2492 X202, TO ADD OR REMOVE NAMES FROM THE PRAYER LIST. IF YOUR NAME IS DROPPED OFF AND YOU ARE IN NEED OF ADDITIONAL PRAYERS FOR HEALING, CONTACT THE PARISH OFFICE. **NAMES APPEAR EVERY OTHER WEEK.**

...our family and friends in the military:

Thomas Edwards	John Hylander	Sarah Katz	Alycia Pouch	John P. Sullivan
Seth Gulsby	Steve Janner	Brian Owara	Nathan Pouch	

...our parishioners who are sick:

Patrick Adams	Bill Cusick	Carol Gretencord	Kathy Lawson	Ed Thomas
Roberta Aguirre	Beth Dierks	Iva Hamilton	Susie Reardon	Kathy Vervaecke
John Altergott	Christine Edmunds	Carol Katzer	Laura Rupp	Anita Wagner

...our family and friends who are sick:

Duane & Melinda Brown	Joy Davie	Glen Horton	Richard Layton	Glnny Torchia
Alissa Carter	Mike Dulle	Jerry Job	Brian Robinson	Lester Wells
Rachel Casady	Charles Haster	Julie Aguirre Johnson	Missy Seaman	

...our family and friends who have died:

John Blando; Mike Rhoades

Care & Support

Wanted: Funeral Lunch Assistance

Sign up November 16-17 in the Narthex

The funeral lunch coordinator team may be found in the narthex this weekend to provide information on this very important and rewarding ministry that Saint Thomas More provides to the families that have lost a loved one. If you are considering volunteering to help with this ministry but miss them, contact Peggy Lucas, peggy@stmkc.com or 816-942-2492 x210.

Join the STM Prayer Chain and Pray for Others

When we receive a prayer request, an email is sent asking for prayers. If you are in need of prayer or interested in praying for those requesting prayer, contact Peggy Lucas, 816-942-2492 x210 or peggy@stmkc.com.

Wanted: Driver with a Large Vehicle

One of the couples who help load up food for the Red Bridge food pantry is having to step back due to health issues. Three couples rotate the duties of coming at noon on the first Sunday and loading up their SUV, then delivering the food to First Baptist at 9:30 or 10am on Monday. With three already on board, the new person/couple would only serve four times/year. If interested, call Tarah at 816-942-1751.

Grief Support Meeting

Saturday, November 16, after 8am Mass

The Bereavement ministry at Cure' of Ars, 9405 Mission Rd, Leawood, KS will meet in the Father Burak room. The topic will be "Giving Thanks During Grief." For more information, call 913-649-2026.

Remembering Our Loved Ones

Visit stmkc.com to view the photos and names of those who were honored at the Nov. 2 All Souls Mass.

Grief Peer Support Group

1st & 3rd Wed. (Nov. 20), 4-5pm, Bauman Room

Grief is difficult and can be experienced as a result of any kind of loss. In addition to supporting each other, we use various resources to better understand our grief. Peggy Lucas, Pastoral Associate, facilitates these groups. Attend as you are able. For more info, contact her at peggy@stmkc.com or 816-942-2492 x210.

For Advent: Wednesdays (Dec. 4, 11, 18), 4-5pm

The group will meet weekly during Advent. If you would like to attend the group please **RSVP by Friday, November 22** to Peggy Lucas, Pastoral Associate, at [Peggy@STMKC.com](mailto:peggy@STMKC.com) or 816-942-2492 x210. A book titled *An Advent of Understanding* will be available in limited quantities.

Turning Point Programs for People with Serious Illness

Turning Point educates and supports individuals, families and friends living with a wide variety of serious or chronic physical illnesses through classes, activities and education. They help participants increase resilience so they may live life to the fullest, even while experiencing chronic disease. Brochures for November-December 2024 that list upcoming programs can be found in the magazine rack at the north end of the narthex.

One of the programs highlighted in the current issue is "Turning Point Guide to the Holidays." The offering is a book series on *Wintering: The Power of Rest and Retreat in Difficult Times* by Katherine May. The book complements Turning Point's mission to help participants not only navigate through difficult circumstances, such as living with an illness or grief, but embraces these challenging, lonely times to rest and retreat. For more information, visit TurningPointKC.org or call 913-574-0900.



Saint Thomas More Christmas Drive

Red Bags: Must be returned by Sunday, Nov. 17

Gift Tags: Must be returned by Sunday, Dec. 1

The Giving Tree is located in the church narthex, with tags for gifts to go to Journey to New Life and Catholic Charities. Take a tag and bring your unwrapped gift back to the tree! Questions? Contact Peggy Lucas at 816-942-2492 x210 or peggy@stmkc.com.

Protecting God's Children (PGC) Training

Monday, November 25, 6-9pm, in More Hall

Our diocese and parish are both committed to having a safe environment for children. To this end, all adults and teens who work with minors are required to take this training and fulfill other requirements.

To sign up for the training, create an account at virtus.org. Choose the Diocese of Kansas City~St. Joseph, then St. Thomas More Parish. You will be directed through the requirements to be safe environment-compliant.

The other requirements include a background check, reading the policy on Ethics and Integrity in Ministry, and taking Mandated Reporter training.

Questions? Contact Joan Sandford at 816-942-2492 x202 or joan@stmkc.com.

Wanted: Travel Size Toiletries

by Thursday, December 12

As many of you know, the Huffmans enjoy going down to One City Cafe and helping out on our son Andy's birthday, which is coming up. We are serving on December 13. If you have interest in helping, we gather travel sized toiletries that we all bring back from our travels and make them available to the guests at the One City Cafe.

If you would like to donate, just let us know and we are happy to collect them and put them to good use.

Thank you,

Charlie & Louann, 913-208-9837

louannahuffman@gmail.com

charliehuffmankc@gmail.com

Guatemala Summer Mission Trip Dates

June 2-8 and June 30-July 6

Deposits are in for the flights to Guatemala! If you would like to travel to Guatemala to help our partner community, now is the time to sign up. The total cost (including flight, room and board) is \$1700/person. There is a \$250 non-refundable deposit.

The first trip is full now. For a spot on the second trip, please email Phil, philsmith4470@gmail.com, by Sunday, December 1.

Thanks for your support!



The Saint Thomas More Knights of Columbus were able to donate over \$6,000 to Knights Charities this year. This is only done with the cooperation of the parish and the help of our parishioners. The Knights were able to assist with the parish's Holiday Gift Card project, Bishop Sullivan Center, F.I.R.E. (Foundation for Inclusive Religious Education), SPRED, Seton Center, and Saint Mary's Home for Mothers. Thank you for your continued generosity in these efforts. ~ STM Knights of Columbus

October Financials

Regular - \$234,420.58	Plate - \$3,187.56
Facilities - \$1,083.70	
Education Fund - \$274.42	School - \$1,135.93
Mission - \$5,631.00	
All Saints - \$355.00	

Thank you for your continued contributions to STM!

Ways to Contribute to STM Church

1. Online giving portal: stmkc.com/stewardship. Click on "Online Giving." The portal gives you the tools to manage your recurring giving or make a one-time gift.
2. Text-to-give - Great for quick one-time gifts! Simply text an amount to 816-272-1040 and it will step you through.

One Family RESTORED IN CHRIST, EQUIPPED FOR MISSION



Growing God's Family

Activating our baptismal call to holiness and being disciple makers

G.I.F.T. Growing in Faith Together

Tuesdays, 9-10:30am, Bauman Room of More Hall

Women gather each week to break open the Sunday readings. All are welcome to join in! Questions? Email Becky at btturner727@yahoo.com.

Considering becoming Catholic?

Inquiry: Tuesdays, 6:15-7:30pm, More Hall A

Nov. 19: Discernment & Catechumenate Sessions; Sponsors & Godparents

Inquiry sessions are for those from other Christian traditions or those with no religious background. Journey with other individuals to learn more about the Catholic Church and to discern God's invitations offered through the Catholic Church. Sessions are open to adults and children, baptized and not. They are also open to Catholics who would like to take advantage of this formation opportunity. Questions? Contact Father Justin, 816-942-2492 x204 or frjhoye@stmkc.com.

School of Religion (SOR)

Wednesdays, 6:15-7:30pm, More Hall A

School of Religion provides catechesis for grade school children, grades 1-8, who do not attend Catholic school. Visit stmkc.com to register online. Click on the "School of Religion" box. Questions? Email Susan at aquiel2000@yahoo.com.

God's Recipe for a Wonderful Life/10 Commandments

Thursdays thru Nov. 21; Dec. 5, 7-8:30pm, More Hall

To learn how the Ten Commandments are God's guidebook for raising strong and loving Catholic families, the STM Knights of Columbus are offering this new adult faith formation program. Please visit stmkc.com to register and be sure to choose Saint Thomas More Parish. It's never too late to join in!

Children's Liturgy of the Word

Sunday, November 17, at 9am Mass

Children through 2nd grade are invited to participate in Children's Liturgy of the Word this weekend. They will be dismissed from Mass prior to the first reading to go to More Hall, to hear the readings on their own level. They rejoin their families after the homily. For questions or to join the team of adult volunteers, contact Joan Sandford, joan@stmkc.com or 816-942-2492 x202.

the week in pictures

NOVEMBER
8

STM School family campus leaf clean up



NOVEMBER
13

Kerygma Studies gathering



NOVEMBER
10

The STM School Children's Choir sings at 11am Mass



NOVEMBER
11

Women of STM Veteran's program



Fr. Justin talks to SPRED about Adoration



You're invited to

Miracle on Holmes Road

A STM Pop-up Bar

DECEMBER | **6** | AT 6:00 PM

Tickets on Sale November 12th,
stmauction.org

**Please join us for a fun night of
specialty holiday drinks,
delicious food, a gift grab
bag game, raffles, and MORE!**

This event supports our wonderful

STM school staff

Lets Celebrate!

MORE HALL 11822 HOLMES RD.
KANSAS CITY, MISSOURI

More Friends (Parishioners 55+ years)

Friendsgiving: Thanksgiving with friends!

Monday, November 18, 11am-2pm in More Hall

Our community will gather for a potluck meal, followed by some exciting games of bingo!

Advent Event

Saturday, December 7, 9-11am in More Hall

More Friends will join other parishioners for the Advent Morning of Reflection. The morning will include a light breakfast and a guest speaker on the subject of Saint Thérèse of Lisieux, aka Little Flower. See you there!

Miscellaneous Info

A leadership team is being assembled to guide this ministry for 2025. To add your name to the team, contact Beth at bethmgmo@att.net or 816-547-5541.

Members may pick up directories at the parish office.

SPRED Class

Monday, November 25, 6:30-8:30pm, More Hall

An adult group for the developmentally delayed meets about every other week to share their faith. Questions? Email Becky at bturner727@yahoo.com.

9th Annual Advent Morning of Reflection

Saturday, December 7, 9-11am

Join other STM parishioners for an uplifting Advent morning, discovering the joy and spirituality of the "Little Way" of Thérèse of Lisieux. Come learn about "doing ordinary things with extraordinary love" during this Advent season. Our presenters - Deacon Lee Butler, Curé of Ars Parish, and Hayley Shaver, STM Evangelization & Discipleship - will share the story of the "Little Way" and how you can practice it in your life. Deacon Butler will have a relic from Saint Thérèse of Lisieux and invites you to bring your rosary or medal.

ALL are welcome to this special morning of prayer, music, and discussion. The day will begin with 8:15am Mass and then we will gather in More Hall, 9-11am. A light breakfast will be served.

Please **RSVP by Wednesday, December 4**, to Marla at mjbyrne0926@swbell.net.

School of Love Date Night + Drive In

Saturday, November 23, at 6pm in Overland Park

Couples of all ages and stages of life are invited to a low-key but important night out to focus in on your spouse before the busyness of family, plans, and holidays. Meet in the drive-in parking lot at 103rd & Mastin St. (right off 69 Hwy.) for food, drinks, and social hour.

At 6:45pm, couples will get back in their cars for our short Date Night talk, transmitted over the radio. At 7:30, couples can choose to either leave and finish their dates at home or out on the town, or to stay to watch *Planes, Trains, & Automobiles* with Steve Martin & John

Candy. This is consistently viewed as a Thanksgiving classic. Email info@schooloflovekc.com with questions or to RSVP, optional.

Living Waters at Saint Thomas More

Mondays (January 6-May 5), 7pm

How does Jesus transform our brokenness into a gift to His Church? We can begin by applying His mercy to the ways we fail to love well: our sexual sin, sins against us, giving too much, or withholding ourselves altogether. We will seek wholeness through honest admission of our brokenness. This confidential, in-depth prayer/healing group is for men and women, marrieds and singles. Email Katie at kcomiskey@desertstream.org for more info or to apply.

Parish Calendar of Events

Sat.-Sun., Nov. 16-17 - Funeral Lunch Volunteer Sign-up

Sun., Nov. 17 - Children's Liturgy, 9am Mass

Staffed Nursery, 9am Mass

Mon., Nov. 18 - More Friends Event, 11am, More Hall

Habits of Freedom, 2-3pm, More Hall

Children's Choir, 3:20-4:15pm, Church

Kerygma Study, 4-5pm, Bauman Library

Tue., Nov. 19 - G.I.F.T., 9-10:30am, More Hall

Kerygma Study, 2-3pm, Bauman Library

OCIA Inquiry, 6:15-7:30pm, More Hall A

Kerygma Study, 6:30-7:30pm, Bauman Library

Wed., Nov. 20 - Casseroles for Uplift, 1:3-3pm, Kitchen

Kerygma Study, 10-11am, Bauman Library

Grief Peer Support, 4-5pm, Bauman Room

School of Religion, 6:15-7:30pm

Thu., Nov. 21 - Kerygma Study, 10-11am, Bauman

Guatemala mtg., 6pm, Parish Office

First Reconciliation (School), 6pm, Church

10 Commandments series, 7-8:30pm, More Hall

Fri., Nov. 22 - Fresh Fire, 7-9pm, Church

Sun., Nov. 24 - OCIA Rite of Welcome & Acceptance

Mon., Nov. 25 - Children's Choir Rehearsal, 3:20-4:15pm

Kerygma Study, 4-5pm, Bauman Library

Protecting God's Children Training, 6-9pm, More Hall

SPRED, 6:30-8:30pm, More Hall B/D

Tue., Nov. 26 - G.I.F.T., 9-10:30am, More Hall

No OCIA session

No Kerygma Study, 2-3pm

Kerygma Study, 6:30-7:30pm, Bauman Library

Wed., Nov. 27 - No Kerygma Study

No School of Religion

Thu., Nov. 28 - Thanksgiving Day

No Kerygma Study

Thu.-Fri., Nov. 27-28 - Parish Office closed

Sat.-Sun., Nov. 30/Dec. 1 - Monthly Food Drive

STM School

Linda Crosthwait, Principal



816-942-5581 [STMKC.COM/SCHOOL](http://stmkc.com/school)

School Dates

Sat., Nov. 16 - Pickleball Tournament, 6-10pm
Tue., Nov. 19 - Skate Party, 6-8pm
Thu., Nov. 21 - First Reconciliation (2nd grade), 5:30pm
Martin City Tree Lighting at 6pm
Fri., Nov. 22, 7-9pm - 8th Grade Mixer
Mon., Nov. 25, 11am - PreK Thanksgiving
Wed.-Fri. (Nov 27-29) - Thanksgiving Break

Football Frenzy Winners

Week 10

\$500 (127) - Jason Prinster
\$250 (126) - Bryn Takle
\$100 (123) - Max Ismert
\$50 (122) - Michael Barry
\$25 (120) - Abby Bauer
\$50 (27) - Kim White
\$25 (31) - Axel Jass

5th Annual STM Booster Club Pickleball Tournament Saturday, November 16, 6-10 pm

ALL parishioners are invited to gather friends and family for a night of friendly competition, fun, and fundraising at SW19 Tennis Academy, 2008 W 103rd Ter, Leawood. Every paddle swing and point scored will directly support the amazing kids of STM School. Visit givebutter.com/2024pickleball to sign up. BYOB, Snacks provided. Festive attire appreciated.

STM Skate Party

Tuesday, November 19, 6-8pm at Skate City

The cost is \$7 admission fee plus \$2 for skate rental and \$1/glow stick. Enjoy skating and the \$11 large pizza special! Skate City is located at 10440 Mastin St, Overland Park. The class with highest attendance percentage wins an ice cream party!

Martin City Tree Lighting

Thursday, November 21

The students will sing 5:30-5:45pm. Tree Lighting is at 6pm. See you there!

8th Grade Mixer

Friday, November 22, 7-9pm in Flanagan Hall

See you there!

Parish Office Staff



Sharon Arnett
Liturgy Coordinator
x208 sharon@stmkc.com



Bob Sandford
Publications & Music Director
x212 bob@stmkc.com



Mary Begnaud
Receptionist
x201 mary@stmkc.com



Joan Sandford
Office Manager
x202 joan@stmkc.com



Scott Dulle
Building & Grounds Director
dulle_scott@stmcyclones.org



Father Paul Sappington
In Residence
frsappington@smacatholic.org



Father Justin Hoyer
Pastor
x204 frjhoye@stmkc.com



Hayley Shaver
Evangelization & Discipleship
x223 hayley@stmkc.com



Becky Johnson
Finance Coordinator
x224 becky@stmkc.com



Tim Waris
Business Manager
x218 tim@stmkc.com



Judy Kashka
Funeral & Wedding Liturgist
judy@stmkc.com



Father Pius Wesonga, AJ
Associate Pastor
x203 frpwesonga@stmkc.com



Peggy Lucas
Pastoral Associate/Outreach
x210 peggy@stmkc.com

Parish Office Hours (until further notice)

Office Hours: M-W 8:45am-3:30pm; T-Th 8:45am-5pm
F 8:45am-1pm

Finance Ministry Team

Justin Hicks, Chair
Mark Meierhoffer
Bruce Gregg

Stefanie Bresette
Laura Christopherson

Parishioner volunteers serve for three-year terms.
Questions? Email FinanceCouncil@stmkc.com.



Diocesan Ombudsman

Joe Crayon crayon@ombudsmankcsj.org or
816-812-2500

To register as a member of Saint Thomas More Parish...

...go to stmkc.com/registration, contact the parish office or pick up a registration form on the Information table in the church narthex.

Safe Environment Information

The Diocese of Kansas City~Saint Joseph is committed to combatting sexual abuse in the Church. If you are a victim of sexual abuse, or if you *observe or suspect* sexual abuse:

- Call the **MO Child Abuse Hotline**, 1-800-392-3738 (if the victim is currently under the age of 18), or **KS Protection Report Center**, 1-800-922-5330, and
- Contact your **local law enforcement agency** or call 911, and
- **If the abuse involves a priest, deacon, employee or volunteer** of the Diocese of Kansas City~Saint Joseph, report the suspected abuse to the **Diocesan Ombudsman, Joe Crayon**, at 816-812-2500 or crayon@ombudsmankcsj.org.

The diocese has a sincere commitment to providing care and healing resources to victims of sexual abuse and their families. Please contact the Victim Advocate at 816-392-0011 or victimadvocate@diocesekcsj.org.

FOR ADDITIONAL INFORMATION, contact:

Joan Sandford, Parish Safe Environment Coordinator, safety@stmkc.com or 816-942-2492 x202, OR

Tracy Stewart, School Safe Environment Coordinator, stewart_tracy@stmcyclones.org or 816-942-5581.

Jennifer Prusa, Journey to Bethany Director, 816-683-8999 or jprusa@diocesekcsj.org (healing for survivors)

Mass Intentions

Mon:
11/18 8:15AM Sharon Reardon Flynn[†]
Tues: **6:15AM William Turner[†]**
11/19 8:15AM Bill Brady[†]
Wed: **6:15AM Ron Robinson[†]**
11/20 ****8:15AM Carl & Linda Fiorella[†]**
Thur: **6:15AM Doctors**
11/21 8:15AM Nino Gurera[†]
Fri:
11/22 8:15AM Jenny & Mary Peralta[†]
Sat:
11/23 4:00PM Steven J Adams[†]
Sun: **7:30AM Our Parishioners**
11/24 9:00AM Bill Gillespie[†]
11:00AM Charles Plummer[†]

[†] Deceased

****School Mass**

To request a Mass intention, stop by the parish office or call 816-942-2492. Suggested donation per Mass is \$10.

SCRIPTURE READINGS

For the daily readings, visit usccb.org/bible/reading. Have the readings sent to your email each day, hear the readings read to you, or watch a video with a reflection based on the readings.



TJ BRENNAN - *Parishioner*
 816.394.2224
 • HOME • AUTO • BUSINESS • LIFE
 tjbrennan@cekinsurance.com
 www.cekinsurance.com

WE APPRECIATE OUR
 ADVERTISERS!

The Genuine. The Original.



Overhead Door Company of Kansas City™
 A **SPACE** Company



SERVING KANSAS CITY *SINCE 1927*

REPAIR + REPLACE GARAGE DOORS AND OPENERS
 RESIDENTIAL DOORS

FREE ESTIMATES • 816-320-5430
 OverheadDoorKansasCity.com

LET'S GROW YOUR BUSINESS

Place Your Ad Here
 and Support Our Parish!

CONTACT ME
Jon Becker

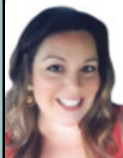
jbecker@4LPi.com
(800) 950-9952 x2536

SHORT STAFFED?

Place an ad here to find new
 local talent for your business.



CALL 800-477-4574



Shelly Balthazor
Real Estate Specialist, Parishioner
 816-591-5277
 shellyb@reecenichols.com



*1 Real Estate Team in MO & KS
 *1 KC Real Estate Team in Homes Sold
 *1 in Sales Volume
 *3 Nationally Ranked Team in the US
 *740+ Million in Sales Volume in 2021

**SUPPORT OUR
 ADVERTISERS!**



STATE FARM®
INSURANCE AGENT

Julie Stoll

ChFC®, CPCU®, CLU®



For ad info. call 1-800-950-9952 • www.4lpi.com

St. Thomas More, Kansas City, MO

C 4C 02-0710



A Fresh and Polished Approach to Oral Health

4851 WEST 134TH STREET • LEAWOOD • KANSAS 66209-7803
913.681.8300 • WWW.JEFFTHOMPSONORTHO.COM

JEFFREY J. THOMPSON, D.D.S., M.S.
DIPLOMATE AMERICAN BOARD OF ORTHODONTICS

catholicmatch®
Missouri



CatholicMatch.com/MO



WALK-IN CLINIC
for sports injury or fractures

M-F: 9am -11am, 1pm - 3pm. Ages 0 -16

**Pediatric Orthopaedic
Surgery Associates**

5250 W. 94th Terrace, Prairie Village, KS 66207

913-451-0000

www.pedorthokc.com

Like a good neighbor **State Farm**
State Farm is there.®



13012 Fuller
P.O. Box 230
Grandview, MO 64030

STATE FARM INSURANCE COMPANIES
HOME OFFICES BLOOMINGTON, ILLINOIS

Larry B. Langford,
CLU CHFC

Bus.: 816-761-8711
Res.: 816 217 8112

larry.langford.b5u9@statefarm.com



RE/MAX®

State Line Real Estate



Direct Line: (913) 312-3630

Mobile: (816) 835-3230

TinaGaughan@gmail.com

TinaGaughan.com

11251 Nall Ave. • Leawood, KS 66211

Tina R. Gaughan
REALTOR®, SRES

Each Office Independently Owned and Operated



WILLS & TRUSTS • ESTATE PLANNING

Christopher Gaughan, Parishioner
ESTATE PLANNING ATTORNEY

- Estate Planning
- Business Succession
- Wills & Living Trusts
- Powers of Attorney
- Farm & Ranch Planning
- Special Needs Trusts

CALL FOR A FREE CONSULTATION!

GAUGHAN & CONNEALY
ESTATE PLANNING ATTORNEYS
4400 College Blvd, Suite 190 | Overland Park, KS 66211
(913) 262-2000 | www.MidwestEstatePlan.com



learn.
grow.
soar.

FORMING MEN AT
THE ROCK

ROCKHURST HIGH SCHOOL

WWW.ROCKHURSTHS.EDU/ADMISSIONS



PILEGGI PAINTING

Exterior - Interior - Decks - Residential & Commercial

Frank Pileggi - Owner

www.PileggiPainting.com

frank@pileggipainting.com | 913-558-5204

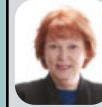
**Catholic Family
CREDIT UNION**

Full Service For All Your Needs
816-444-7440

9237 Ward Parkway, Ste 114

www.catholicfamilycu.com

Savings Insured by the NCUA up to \$250,000



Mary Owens Boesen
Parishioner
Life & Health Insurance Sales

MEDICARE

Let me help you! 30 years experience

816-942-0666 • mboesen@kc.rr.com

IF YOU LIVE ALONE

MDMedAlert!™ As Low As

\$19⁹⁵

mo.

- ✓ Ambulance ✓ Police/Fire
- ✓ Family/Friends ✓ GPS & Fall Alert

CALL NOW **800.808.9294** • md-medalert.com



CottageCare

HOUSE CLEANING AT ITS BEST!

For Pricing call (913) 469-0220
or visit cottagecare.com



JD & Jakes
THE BARBER SHOP

(816) 569.2887 (cuts)

13033 Holmes Rd.



SANDTRAP
Bar & Grill

(816) 942-0990 | 13037 Holmes Rd.



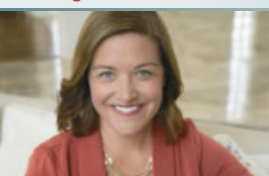
WE APPRECIATE OUR

WE APPRECIATE OUR
ADVERTISERS!

URGENT CARE
AT HOME

In home evaluations and
treatments helps you skip the
wait and get the care you need,
when and where you need it.

Meghan Macy
FNP-BC, APRN, NE
(816) 223-7638
www.urgentcareathomekc.com



State Farm

Brady Crawford

Insurance & Financial Services

816.333.5853

coveredbycrawford.com

Locations in Waldo & Martin City



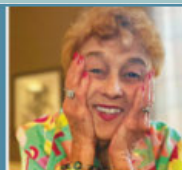
RENTERS HOMEOWNERS CONDO AUTO PET PERSONAL ARTICLES BUSINESS LIFE HEALTH

The Madison
SENIOR LIVING



Learn more about life
at The Madison!

Schedule a Tour | (816) 327-1726



For ad info. call 1-800-950-9952 • www.4pi.com

St. Thomas More, Kansas City, MO

B 4C 02-0710



Buy one Breakfast, Lunch or Dinner Combo meal
and get one of equal or lesser value **FREE**

Limit one coupon per customer per visit. Please present coupon when ordering.
Not valid with any other offer. Expires April 30, 2025
Code 0710

24 Highway McDonald's
11700 East US Highway 24
Independence, MO

Eastland McDonald's
18910 East US Highway 40
Independence, MO

Susuehanna McDonald's
16235 East US Highway 24
Independence, MO

BR Crossing McDonald's
11801 East US Highway 40
Independence, MO

40 Highway McDonald's
920 SW US Highway 40
Blue Springs, MO

North 7 McDonald's
814 NW State Route 7
Blue Springs, MO

REDEEMABLE ONLY AT:
Woods Chapel McDonald's
1515 NW Woods Chapel Rd
Blue Springs, MO

South 7 McDonald's
3116 South 7 Highway
Blue Springs, MO

Chouteau McDonald's
4400 N Chouteau Traffic Way
Kansas City, MO

Broadway McDonald's
3741 Broadway Boulevard
Kansas City, MO

Red Bridge McDonald's
11001 Hickman Mills Drive
Kansas City, MO

Blue Ridge McDonald's
5260 Blue Ridge Boulevard
Raytown, MO

Carpets | Area Rugs | Upholstery
Hardwood Floors | Air Ducts
Tile & Grout | Residential/Commercial

WE CLEAN GREEN! zerorez
the right way to clean

(816) 425-3655
www.zerorezkc.com Steven Phelps

Better Homes and Gardens REAL ESTATE KANSAS CITY HOMES

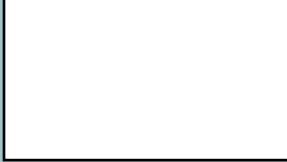
Judy Sheaman, ABR
Sales Executive with 26 Yrs. Experience
Parishioner
Licensed in Kansas & Missouri

Office: 913-981-2827
Cell: 816-304-2888
KC Magazine
"Five Star Real Estate Agent"
for overall customer satisfaction since 2005

Owen LUMBER CO.
KC's Leading Decking & Andersen Window Supplier
Mike McGlinn Parishioner
816-331-2211 OwenLumber.com

ALLIED CONCRETE PRODUCTS
12800 2nd St. Grandview
816-966-8836
Judy, Pale, & Amparo Furey Parishioners

RESIDENTIAL SEWAGE TREATMENT COMPANY, INC.
12800 2nd St. Grandview
816-966-8885
Kathy Maguire & Tom Fritts Parishioners



LET'S GROW YOUR BUSINESS
Place Your Ad Here and Support Our Parish!

CONTACT ME Jon Becker
jbecker@4LPi.com • (800) 950-9952 x2536

MCGILLEY MEMORIAL CHAPELS SINCE 1899 Funerals | Cremations | Receptions | Celebrations
"Celebrating Lives"
Patrick McGilley | Joe Haster | 816-942-6180 | www.mcgilleystatelinechapel.com

Place Your Ad Here and Support our Parish!
Instantly create and purchase an ad with

AD CREATOR STUDIO

4lpi.com/adcreator

Muehlebach Funeral Care & Cremation Services

MUEHLEBACH FUNERAL CARE

816-444-2060
www.muehlebachchapel.com
"Our Family Dedicated to Serving Yours."

Parishioners:
Steve & Nicole Pierce
Jordan Pierce STM Class of 2011
Jenny Mertes
Tom Reagan

LINC Local Investment Commission
Part-time Child Care Jobs
Now Hiring!
Apply at: kdinc.org/parttimejobs
LINC Caring Communities Sites
North Kansas City - Kansas City Public Schools
Center - Hickman Mills - Grandview

MALACHY CONNOR DESIGN & LANDSCAPE

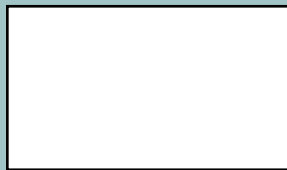
Landscape Design & Installation

Let me design your dream landscape now!
Book now
913-515-4166
MALACHY@CONNORLANDSCAPING.COM

ACCESS YOUR POTENTIAL

AVILA UNIVERSITY

Avila.edu/catholic



WE APPRECIATE OUR ADVERTISERS!

John Sweeney CCIM
Reece Commercial
Commercial Real Estate
(913) 945-3718 (913) 461-6326 mobile
John@ReeceCommercial.com
Brokerage Investment Development Consulting

We are an Independent Agency With Over 30 Years of Experience

- Auto
- Home
- Life
- Commercial

Your financial partner throughout your life.

Matthew Pomianek, AAMS*, Financial Advisor, Parishioner
5000 W 95th St Ste 103
Prairie Village, KS 66207
913-648-6084
matthew.pomianek@edwardjones.com

Member SIPC
Edward Jones
MAKING SENSE OF INVESTING

BURIAL • ENTOMBMENT • CREMATION • TRADITIONAL CEREMONIES • CELEBRATIONS OF LIFE

CULLEN FUNERAL HOME, INC.

612 W Foxwood Dr
Raymore, MO 64083
(816) 322-5278

PLAN AHEAD
WE'LL TAKE THE FIRST STEP WITH YOU.

NESTEL INSURANCE AGENCY
Mary Nestel
816-361-6442
9233 Ward Parkway Ste 124
Kansas City, MO 64114
www.nestelinsurance.com
info@nestelinsurance.com

PARISHIONER OWNED
JOE & MAGGIE TULIPANA

BLIND BOX BBQ

SHAWNEE
13214 W 62ND TERR, SHAWNEE, KS 66216

VILLAGE WEST (INSIDE NEBRASKA FURNITURE MART)
1601 VILLAGE WEST PKWY, KANSAS CITY, KS 66111

WE CATER! 913.268.488Q
catering@blindboxbbq.com

BLIND BOX BBQ
BLINDBOXBBQ.COM