



OUR **MISSION** IS TO PROVIDE A WELCOMING, INCLUSIVE, AND LOVING COMMUNITY BY PROCLAIMING AND LIVING GOD'S WORD THROUGH WORSHIP, EDUCATION, AND SOCIAL JUSTICE.

SAINT THOMAS MORE PARISH

11822 Holmes Road, Kansas City, Missouri 64131 • stmkc.com

November 24, 2024



BULLETIN ONLINE

this and last week's at stmkc.com
Subscribe at stmkc.com/emailme →



MASSES

WEEKDAY: Mon & Fri 8:15am,
Tues, Wed, Thu 6:15am & 8:15am
First Sat 8:15am
WEEKEND: Sat 4pm, Sun, 7:30am, 9am & 11am
MASS ONLINE CONTINUES

RECONCILIATION

Individual Confessions: by appointment and
Tuesdays and Thursdays, 5-6pm
Saturdays, 3-3:45pm
First Saturdays, 7:15-8am

OUR CLERGY

Father Justin Hoye, Pastor
Father Pius Wesonga, AJ, Associate Pastor
In Residence: Father Paul Sappington

AT THE PARISH OFFICE

Office Hours:
Mon. & Wed. 8:45am-1pm, 2-3:30pm*
Tues. & Thurs. 8:45am-1pm, 2-5pm*
Friday 8:45am-1pm
* lunch hour 1-2pm

Parish Office 816-942-2492

Office directory at stmkc.com and p.9

AT THE SCHOOL OFFICE

Linda Crosthwait Principal
Tracy Stewart Assistant Principal

Office hours: Mon.-Thurs., 8am-3:45pm;
Fri., 8:30am-3:30pm

School Office 816-942-5581

School fax 816-941-2450

School email directory at stmkcschool.org

SCHOOL TOURS: contact Principal Linda Crosthwait at 816-942-5581 or crosthwait_linda@stmkcyclones.org

SAFE ENVIRONMENT

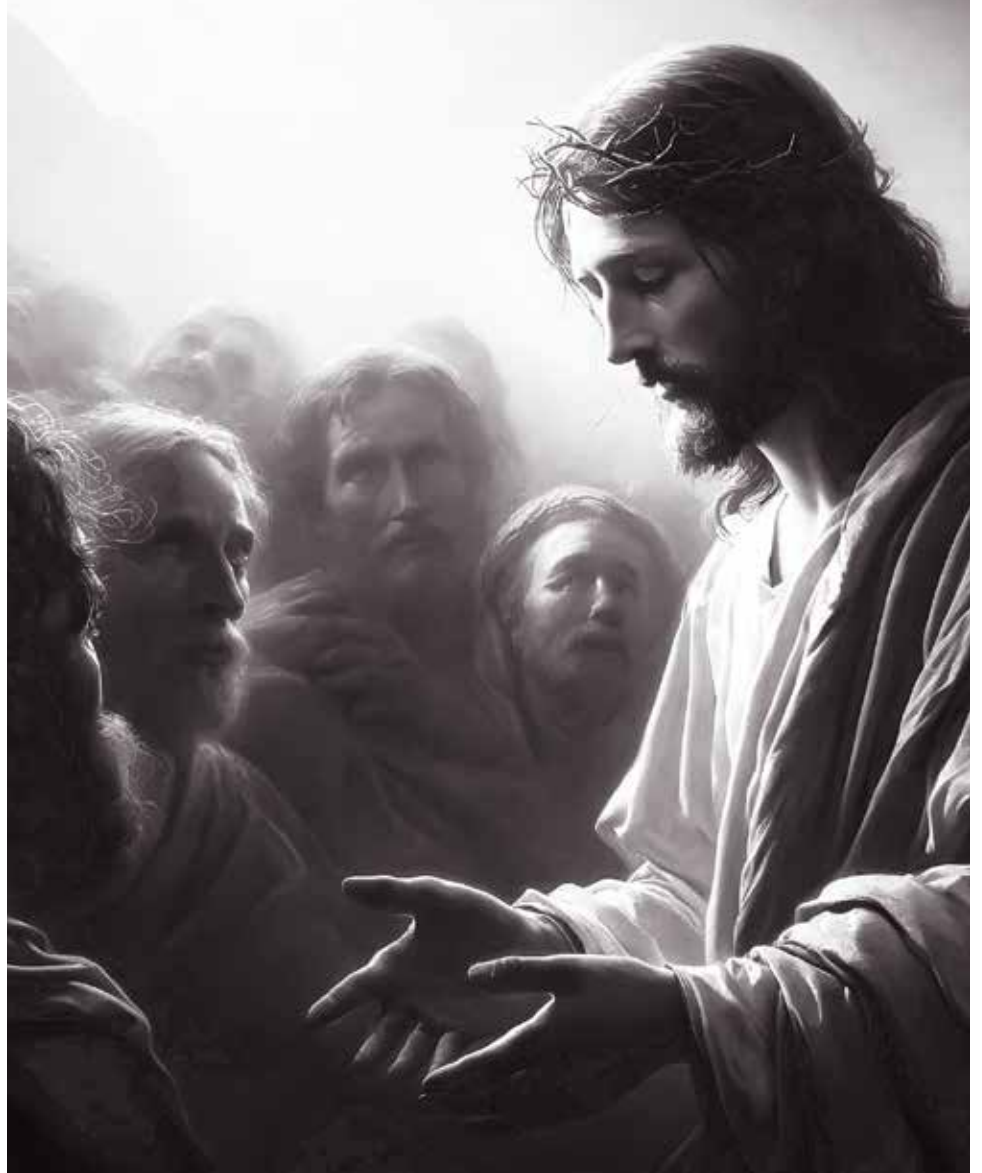
All employees and volunteers working with minors are required to:

- Create an account at virtus.org
- Attend a Protecting God's Children workshop
- Complete a mandated reporter training
- Submit to a background check
- Read the online Policy on Ethics and Integrity in Ministry

For more Safe Environment information, including reporting and victim resources, see page 10.

Let all your works give you thanks, O Lord

Ps 145:10



THANKSGIVING DAY MASS 9AM

FRIDAY MASS 9AM ONLY



THE PASTOR'S PEN

Faithful People of Saint Thomas More,

Congratulations to our STM school students who celebrated First Reconciliation this week! (Our SOR students will celebrate the sacrament in December.)

Next weekend is the deadline to participate in the Giving Tree, benefiting Journey to New Life and Catholic Charities. The last day to bring presents to the narthex is Sunday, December 1st.

We continue to receive stewardship pledges for the next calendar year. Your response is appreciated!

Advent begins next weekend, and we make a few liturgical changes to note the move:

- + Our 7:30am Sunday Mass will have instrumental music during the Advent Season
- + 6:15am Masses will expand to Monday through Friday for the four weeks of Advent
- + Saturdays will have 7:15am confessions & 8:15am daily Mass during the Advent Season
- + Confession will be available through Advent:
 - + Tuesdays & Thursdays 5-6PM
 - + Saturdays 7:15-8AM and 3-3:45PM

Father Justin

P.S. Because we have no school this Wednesday, the 8:15AM Mass on Tuesday will have our school community with us.

P.P.S. Daily Mass for Thanksgiving and Friday will be at 9AM. We will NOT have 5PM confessions available on Thanksgiving Day.

SAINT THOMAS MORE PARISH Annual Stewardship

STM Annual Stewardship & Diocesan Annual Appeal

Parishioners are encouraged to prayerfully consider both asks and to discuss a response with spouses and children. What we do with our many blessings of time, talent and treasure in our lives is a very important part of life and how we live our faith!



Commitment Weekend has passed. If you have not returned your pledge form, please do so soon! Your returned form helps us to budget responsibly. For those who contribute online, it also lets us know you intend to continue your contribution. Please return pledge forms by the end of this calendar year so future contributions can be applied toward your pledge.

If you have not received a packet, contact Joan Sandford, joan@stmkc.com or 816-942-2492 x202. Or pledge online by using the QR code above or visiting stmkc.com and clicking on the Annual Stewardship box.

THANK YOU for all you do at and for Saint Thomas More: your prayers and continuing formation, supporting the many ministries of the parish, caring for the school students and their families, keeping the utility bills paid, and always ready to reach out to help others in need. STM is an amazing parish because of you and your support!

Annual Stewardship Pledge Report

Goal: 100% Participation

As of 11/18/24, 299 households returned pledge forms.

Diocesan Annual Catholic Appeal (ACA)

Goal: 100% response rate

As of 11/12/24 :

- 104 (7%) STM households pledged \$96,285
- Across the diocese 2,758 households pledged \$948,633 toward a \$2 million goal.

Bulletin Deadline Changes

| Bulletin | Due Date |
|-------------|--|
| December 1 | Thursday, Nov. 21, 9am |
| December 8 | Monday, Dec. 2, 9am |
| December 15 | Monday, Dec. 9, 9am |
| December 22 | Thursday, Dec. 12, 9am (December 22 is the Christmas bulletin.) |
| December 29 | Wednesday, Dec. 18, 9am |

Come Home to Communion



Daily Masses

Monday, 8:15am
 Tuesday, 6:15 & 8:15am
 Wednesday, 6:15 & 8:15am
 *Thursday, 6:15 & 8:15am
 *Friday, 8:15am
 First Saturday, 8:15am

***Mass will be celebrated at 9am November 28 & 29.**

Weekend Masses:

Saturday Vigil, 4pm
 Sunday, 7:30am, 9am & 11am

Sign Interpreted services: 2nd Sundays at 11am

Masses are recorded daily; find them at stmkc.com or youtube.stmkc.com.

The Light is on for You

Confessions are offered in the reconciliation room.

Tuesday, 5-6pm *Thursday, 5-6pm
 Saturday, 3-3:45pm First Saturday, 7:15-8am
 and by appointment *Not Thanksgiving Day

Church Hours for Private Prayer

Monday - Friday, 6am-9pm
 Saturday - Sunday, 7am-9pm

Pray the Rosary with Others

Sundays, after 9am Mass

Join with the Knights of Columbus in prayer.

Monday-Friday, after the 8:15am Mass, Chapel

All are welcome to pray the rosary or the Fatima devotions with others on first Saturdays, after 8:15am Mass.

Eucharistic Exposition at STM

Sundays, Noon-9pm in the Church

Regular time spent with the Lord in Adoration can be life changing! First Sundays, Noon-1pm, has music.

Like anything else that is worthwhile in life, it takes a certain degree of discipline to become more eucharistic in your prayer life. Remember, however, that God is never outdone in generosity.

Prayer Intentions

Pope Francis: Let us pray that all parents who mourn the loss of a son or daughter find support in their community and may receive peace of heart from the Spirit of Consolation.

Bishop Johnston: Let us pray for peace in the Holy Land.

Care & Support

Remembering Our Loved Ones

Visit stmkc.com to view the photos and names of those who were honored at the Nov. 2 All Souls Mass.

Please hold in prayer

CONTACT THE PARISH OFFICE, BULLETIN@STMKC.COM OR 942-2492 X202, TO ADD OR REMOVE NAMES FROM THE PRAYER LIST. IF YOUR NAME IS DROPPED OFF AND YOU ARE IN NEED OF ADDITIONAL PRAYERS FOR HEALING, CONTACT THE PARISH OFFICE. **NAMES APPEAR EVERY OTHER WEEK.**

...our family and friends in the military:

| | | | | |
|-------------|-----------------------|--------------|-------------------|-------------------|
| Nick Alder | Nathan Butcher | TJ Francik | Jonathan Kennaley | Christopher Yates |
| Drew Belzer | Logan Elrader-Effertz | Luke Jokerst | Zach Love | |

...our parishioners who are sick:

| | | | | |
|----------------|---------------|---------------|----------------|--------------|
| Mary Sue Adams | Linda Neenan | Cathy Terwelp | Carol Turner | Gafo Visasio |
| Joan Cody | Mary Robinson | Karen Tritt | Leonardo Viril | Bill Young |
| Cricket Hill | | | | |

...our family and friends who are sick:

| | | | | |
|--------------|---------------|--------------------|------------------|-----------------|
| Tom Bauer | Edward Dulle | Emily Kurek | Noel Mehlo | Peter Szumigala |
| Emma Beaver | Chris Frantze | Denise Adams Mehlo | Stephanie Shaver | Stephan Tafuro |
| Scott Carson | Bob Kennaley | | | |

...our family and friends who have died:

Martha Ziegler; Mike Dulle, father of Scott Dulle

Grief Peer Support Group

For Advent: Wednesdays (Dec. 4, 11, 18), 4-5pm

The group will meet weekly during Advent. If you would like to attend the group please **RSVP by Friday, November 22** to Peggy Lucas, Pastoral Associate, at Peggy@STMKC.com or 816-942-2492 x210. A book titled *An Advent of Understanding* will be available in limited quantities.

Missouri abortion amendment: Close vote sparks hope

Repeal of Missouri's abortion amendment remains a possibility, the head of the state's Catholic conference says. Visit catholicnewsagency.com/ and click on "Missouri Abortion Amendment" for additional information.

Courage and Encourage Apostolates

Courage Kansas City is the local chapter of the Courage Apostolate. Spiritual support is offered to Christian men and women with same-sex attractions who desire to live chaste lives in accordance with the teachings of Scripture and Catholic moral teaching.

EnCourage offers support for families of those with same-sex attraction or gender dysphoria.

Monthly meetings are held at a location convenient for those throughout the KC metro area. Call 816-714-2371 if you are interested in either support group. Visit kcsjfamily.org/courage-encourage to learn more.



Saint Thomas More Christmas Drive

Gift Tags: Must be returned by Sunday, Dec. 1

The Giving Tree is located in the church narthex, with tags for gifts to go to Journey to New Life and Catholic Charities. Take a tag and bring your unwrapped gift back to the tree! Questions? Contact Peggy Lucas at 816-942-2492 x210 or peggy@stmkc.com.

Protecting God's Children (PGC) Training

Monday, November 25, 6-9pm, in More Hall

Our diocese and parish are both committed to having a safe environment for children. To this end, all adults and teens who work with minors are required to take this training and fulfill other requirements.

To sign up for the training, create an account at virtus.org. Choose the Diocese of Kansas City~St. Jo-

esph, then St. Thomas More Parish. You will be directed through the requirements to be safe environment-compliant.

The other requirements include a background check, reading the policy on Ethics and Integrity in Ministry, and taking Mandated Reporter training.

Questions? Contact Joan Sandford at 816-942-2492 x202 or joan@stmkc.com.

Food Drive Next Weekend

November 30/December 1, in the Narthex

Our monthly food drive helps people who are struggling to put food on their tables and is distributed by Seton Center and our Red Bridge food pantry.

Please bring the following items for Seton Center: canned tuna, meats, low-sodium soups, vegetables and fruit; pancake mix & syrup, sugar, dry milk, boxed meals, pasta & sauce, peanut butter & jelly, rice, jello, condiments, white beans, laundry soap, toiletry items, and paper goods.

To make a monetary contribution to Seton Center, visit setonkc.org and click on the donate tab.

Red Bridge Pantry

Due to your generosity, the pantry helped 19 families, with 65 individuals, who are our neighbors. Harvesters and St. Peter's/All Saints provided turkeys for the larger families, and the others received whole chickens.

Special Requests for December:

- canned chicken (small and large) - out; chili, stew, sloppy joe (Manwich); pasta (Spaghetti-o's, etc.) and pasta sauce; peas, mixed veg., carrots, mushrooms, sweet potatoes, spinach, etc.; pineapple, pears, peaches, cocktail; jelly
- laundry detergent (small bottles), facial tissue
- 1# bags white rice, Hamburger Helper type boxes, canned and dry beans, instant mashed potatoes

As always, thank you for your amazing generosity!!

The Magic of Morning Glory

December 4, 5:30-7:30pm at The Hogan Center

This annual fundraiser for Morning Glory Ministries, emceed by Abby Eden of Channel 4, includes a terrific Italian dinner, music by Opus76, live and silent auctions, and, of course, magic. Let the magic of giving transform lives and create a brighter future for those living on the streets of Kansas City. The Hogan Center is located on the campus of the Cathedral of the Immaculate Conception, KCMO.

Visit morninggorykc.org for more information, to RSVP or to make a contribution. Morning Glory Ministries serves 45,000+ free meals annually.

Guatemala Summer Mission Trip Dates - Last call!

June 2-8 and June 30-July 6

Deposits are in for the flights to Guatemala! If you would like to travel to Guatemala to help our partner community, now is the time to sign up. The total cost (including flight, room and board) is \$1700/person. There is a \$250 non-refundable deposit.

The first trip is full now. For a spot on the second trip, please email Phil, philsmith4470@gmail.com, by Sunday, December 1.

Wanted: Help at Seton Center

Are you creative, caring, enthusiastic, fun and love to give back to your community? Then we would like to invite you to join our team of dedicated volunteers.

Seton Center provides a variety of ways to participate and get involved. Become a part of our mission, using your talent and time to help play a vital role in the day-to-day services Seton Center offers the community.

Help is needed in the clothing closet and food pantry on Tuesdays and Thursdays, 9-11:30am or 1-3:30pm. Email Krista, krista.harper@setonkc.org to volunteer.

October Financials

| | |
|---------------------------|---------------------|
| Regular - \$234,420.58 | Plate - \$3,187.56 |
| Facilities - \$1,083.70 | |
| Education Fund - \$274.42 | School - \$1,135.93 |
| Mission - \$5,631.00 | |
| All Saints - \$355.00 | |

Thank you for your continued contributions to STM!

Ways to Contribute to STM Church

1. Online giving portal: stmkc.com/stewardship. Click on "Online Giving." The portal gives you the tools to manage your recurring giving or make a one-time gift.
2. Text-to-give - Great for quick one-time gifts! Simply text an amount to 816-272-1040 and it will step you through.

Please help STM credit your contribution to YOU!

Did you know that some bank and stock contributions arrive at STM with no name attached? Before you make a stock contribution, please contact Tim Waris (816-942-2492 x218 or tim@stmkc.com) or visit stmkc.com. (Click on Stewardship and Alternative Giving to find the stock donation form.) If you contribute by having a bank send STM a check, please instruct your bank to include your name on the check. Thank you!

...and help STM honor your intention!

When you contribute, particularly at this time of year, please be sure to note the year for which you are giving and the purpose of your contribution (tithe, HVAC, etc.) As always, THANK YOU for your contributions!



G.I.F.T. Growing in Faith Together

Tuesdays, 9-10:30am, Bauman Room of More Hall

Women gather each week to break open the Sunday readings. All are welcome to join in! Questions? Email Becky at btturner727@yahoo.com.

Considering becoming Catholic?

Inquiry: Tuesdays, 6:15-7:30pm, More Hall A

Nov. 26: No Session

Dec. 3: *Prayer & Worship: Public & Private Devotions*

Inquiry sessions are for those from other Christian traditions or those with no religious background. Journey with other individuals to learn more about the Catholic Church and to discern God's invitations offered through the Catholic Church. Sessions are open to adults and children, baptized and not. They are also open to Catholics who would like to take advantage of this formation opportunity. Questions? Contact Father Justin, 816-942-2492 x204 or frjhoye@stmkc.com.

School of Religion (SOR)

Wednesdays, 6:15-7:30pm, More Hall A

School of Religion provides catechesis for grade school children, grades 1-8, who do not attend Catholic school. Visit stmkc.com to register online. Click on the "School of Religion" box. Questions? Email Susan at aquiel2000@yahoo.com.

SPRED Class

Monday, November 25, 6:30-8:30pm, More Hall

An adult group for the developmentally delayed meets about every other week to share their faith. Questions? Email Becky at btturner727@yahoo.com.

God's Recipe for a Wonderful Life/10 Commandments

No Session Nov. 28; Last one: Dec. 5, 7-8:30pm

If you missed the in-person series at STM, visit stmkc.com to register for this program on your own. You can view the video series at home, with family and friends, or alone.

sign up at stmkc.com



Children's Liturgy of the Word

Sunday, December 15, at 9am Mass

Children through 2nd grade are invited to participate in Children's Liturgy of the Word. For questions or to join the team of adult volunteers, contact Joan Sandford, joan@stmkc.com or 816-942-2492 x202.



You're invited to

Miracle on Holmes Road

A STM Pop-up Bar

DECEMBER | 6 | AT 6:00 PM

Tickets on Sale November 12th,
stmauction.org

**Please join us for a fun night of
specialty holiday drinks,
delicious food, a gift grab
bag game, raffles, and MORE!**

This event supports our wonderful

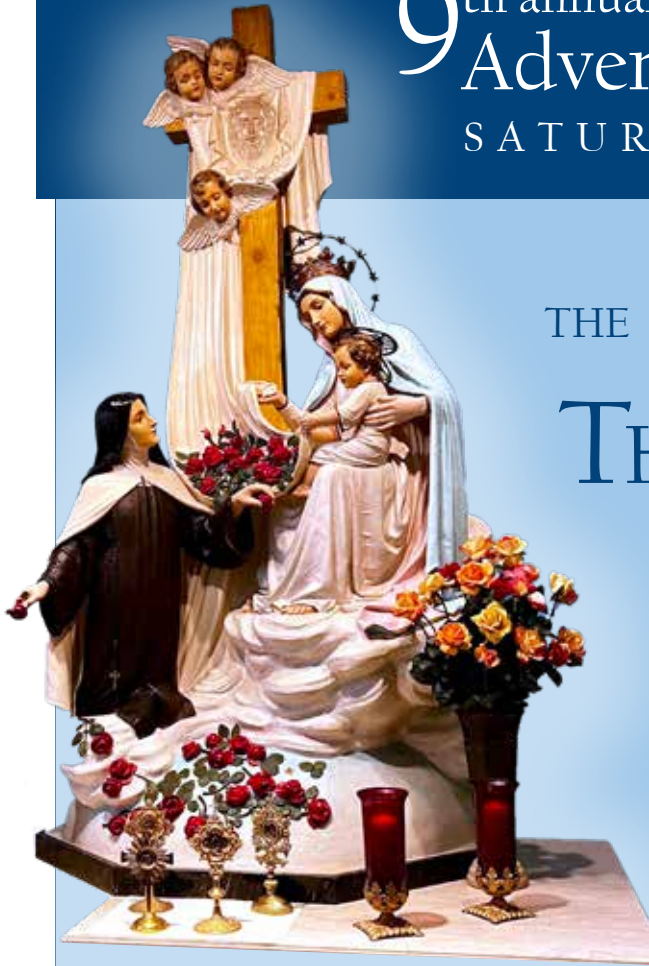
STM school staff

Lets Celebrate!

MORE HALL 11822 HOLMES RD.
KANSAS CITY, MISSOURI

9th annual Advent Morning of Reflection

SATURDAY, DECEMBER 7, 9-11AM



THE ‘LITTLE WAY’ OF THÉRÈSE OF LISIEUX

Join other STM parishioners for an uplifting Advent Morning of Reflection discovering the joy and spirituality of the ‘Little Way’ of Thérèse of Lisieux. Come learn about “doing ordinary things with extraordinary love” during this Advent season.

OUR PRESENTERS Deacon Lee Butler, Curé of Ars Parish, and Hayley Shaver, STM Evangelization & Discipleship Coordinator, will share the story of the “Little Way” and how you can practice it in your life. Deacon Butler will have a relic from St. Thérèse of Lisieux and invites to bring your rosary or medal.

OUR PRESENTERS



Deacon Lee Butler
Curé of Ars Parish



Hayley Shaver,
STM Evangelization &
Discipleship Coordinator

ALL are welcome to this special morning of prayer, music, and discussion. The day will begin with 8:15am Mass and then we will gather in More Hall, 9 – 11am. A light breakfast will be served.

RSVP
BY
WEDNESDAY
DECEMBER 4

to Marla Byrne
mjbyrne0926@swbell.net

Advent Series for (Younger) Moms

Day/Time to be determined

STM is hosting a small group Advent study for moms with grade school children or younger. We will be walking through Heather Khym's book *Encountering Emmanuel: A Guided Advent Journal for Prayer and Meditation*. The group will be led by parishioner Jill Rippee once a week during the 4 weeks of Advent. Space is limited to 15 people. Please email Jill for more information at Jillnicole84@gmail.com. All materials needed will be provided.

Here is a brief description from the book: *Embark on a transformative journey this Advent with Heather Khym, cohost of the Abiding Together podcast, as she extends a heartfelt invitation to embrace stillness and silence amid life's chaos, allowing God to dwell in the depths of your being. While the world moves at an ever-faster pace, Heather encourages you to pull back from the hustle and create space for our Savior to come into every area of your life—to transform and heal it through his love.*

More Friends (Parishioners 55+ years)

Advent Event

Saturday, December 7, 9-11am in More Hall

More Friends will join other parishioners for the Advent Morning of Reflection. The morning will include a light breakfast and a guest speaker on the subject of Saint Thérèse of Lisieux, aka Little Flower. See you there!

Miscellaneous Info

A leadership team is being assembled to guide this ministry for 2025. To add your name to the team, contact Beth at bethmgmo@att.net or 816-547-5541.

Members may pick up directories at the parish office.

9th Annual Advent Morning of Reflection

Saturday, December 7, 9-11am

Join other STM parishioners for an uplifting Advent morning, discovering the joy and spirituality of the "Little Way" of Thérèse of Lisieux. Come learn about "doing ordinary things with extraordinary love" during this Advent season. Our presenters - Deacon Lee Butler, Curé of Ars Parish, and Hayley Shaver, STM Evangelization & Discipleship Coordinator - will share the story of the "Little Way" and how you can practice it in your life. Deacon Butler will have a relic from Saint Thérèse of Lisieux and invites you to bring your rosary or medal.

ALL are welcome to this special morning of prayer, music, and discussion. The day will begin with 8:15am Mass and then we will gather in More Hall, 9-11am. A light breakfast will be served.

Please **RSVP by Wednesday, December 4**, to Marla at mjbyrne0926@swbell.net.

Living Waters at Saint Thomas More

Mondays (January 6-May 5), 7pm

How does Jesus transform our brokenness into a gift to His Church? We can begin by applying His mercy to the ways we fail to love well: our sexual sin, sins against us, giving too much, or withholding ourselves altogether. We will seek wholeness through honest admission of our brokenness. This confidential, in-depth prayer/healing group is for men and women, marrieds and singles. Email Katie at kcomiskey@desertstream.org for more info or to apply.

Parish Calendar of Events

- Sun., Nov. 24 - OCIA Rite of Welcome & Acceptance
- Mon., Nov. 25 - Children's Choir Rehearsal, 3:20-4:15pm
 - Kerygma Study, 4-5pm, Bauman Library
 - Protecting God's Children Training, 6-9pm, More Hall
- SPRED, 6:30-8:30pm, More Hall B/D
- Tue., Nov. 26 - G.I.F.T., 9-10:30am, More Hall
 - No OCIA session
 - No Kerygma Study, 2-3pm
 - Kerygma Study, 6:30-7:30pm, Bauman Library
- Wed., Nov. 27 - No Kerygma Study
 - No School of Religion
 - Parish Office closes at 1pm
- Thu., Nov. 28 - Thanksgiving Day
 - No Kerygma Study
 - No Ten Commandments session
- Thu.-Fri., Nov. 27-28 - Parish Office closed
- Sat.-Sun., Nov. 30/Dec. 1 - Monthly Food Drive
- Sun., Dec. 1 - Gift Sorting, 11am-2pm, More Hall
- Mon., Dec. 2 - Children's Choir Rehearsal, 3:20-4:15pm
 - Kerygma Study, 4-5pm, Bauman Library
 - STM Serves at One City Cafe, 4:15-6pm
 - Faith in Action mtg., 6:30pm, Parish Office
- Tue., Dec. 3 - G.I.F.T., 9-10:30am, More Hall
 - Kerygma Study, 2-3pm, Bauman Library
 - Kerygma Study, 6:30-7:30pm, Bauman Library
- Wed., Dec. 4 - Kerygma Study, 10-11am, Bauman Library
 - Grief Peer Support, 4-5pm, Bauman Room
 - School of Religion, 6:15-7:30pm, More Hall A
- Thu., Dec. 5 - Kerygma Study, 10-11am, Bauman
 - Guatemala mtg., 6pm, Parish Office
 - First Reconciliation (School), 6pm, Church
 - 10 Commandments series, 7-8:30pm, More Hall
- Sat., Dec. 7 - Advent Morning of Reflection, 9-11am, More Hall
- Sun., Dec. 8 - Religious Retirement collection
- Mon., Dec. 9 - Feast of the Immaculate Conception of the Blessed Virgin Mary (observed)
 - Masses at 6:15am, 8:15am, 6pm

STM School

Linda Crosthwait, Principal



816-942-5581 [STMKC.COM/SCHOOL](http://stmkc.com/school)

School Dates

Mon., Nov. 25, 11am - PreK Thanksgiving
 Wed.-Fri. (Nov 27-29) - Thanksgiving Break
 Wed., Dec. 4 - PreK-4th Concert, 6:30pm, Flanagan Hall
 Thu., Dec. 5 - Band Concert, 6:30pm, Flanagan Hall
 Fri., Dec. 6 - Saint Nicholas Parties
 Holiday Pop-up Bar, 6pm, More Hall
 Sun., Dec. 8 - Children's Choir sings at 11am Mass

Miracle on Holmes Road: An STM Pop-up Bar

Friday, Dec. 6, 6pm in (a transformed) More Hall

We're excited to invite you to our Inaugural STM Pop-Up Bar celebration, where holiday cheer meets festive cocktails in a cozy, spirited setting.

Enjoy a selection of specialty holiday drinks, delicious bites, and plenty of festive fun! Whether you're in the mood for a Christmas cocktail or just looking to get into the holiday spirit, we've got something special for you. Purchase tickets today at stmauction.org or call Katie at 816-305-6015. Just \$50/person will get you entry, plus drinks and food all night! Tickets are limited, so don't wait.

Know you can't make it, but still want to help our staff? visit stmauction.org and click on "Teacher Bonus Fund."

Hey, STM community!

Do you own a small business?! Our auction relies on donations from families, parishioners, and businesses in the surrounding community! We are still looking for items for our live and silent auctions, if you have any items, leads, or ideas please reach out to us! Below are a few ideas. No gift is too big or too small! What would you bid on? Suggestions include:

- | | |
|------------------------|------------------------|
| vacation homes | video games |
| dining experiences | services |
| electronics | kid items |
| airline miles | artwork |
| private transportation | adult experiences |
| sporting event tickets | barware |
| concert tickets | bottles of liquor/wine |
| venue rentals | |

We appreciate you!

Parish Office Staff



Sharon Arnett
 Liturgy Coordinator
 x208 sharon@stmkc.com



Bob Sandford
 Publications & Music Director
 x212 bob@stmkc.com



Mary Begnaud
 Receptionist
 x201 mary@stmkc.com



Joan Sandford
 Office Manager
 x202 joan@stmkc.com



Scott Dulle
 Building & Grounds Director
dulle_scott@stmcyclones.org



Father Paul Sappington
 In Residence
frsappington@smacatholic.org



Father Justin Hoyer
 Pastor
 x204 frjhoye@stmkc.com



Hayley Shaver
 Evangelization & Discipleship
 x223 hayley@stmkc.com



Becky Johnson
 Finance Coordinator
 x224 becky@stmkc.com



Tim Waris
 Business Manager
 x218 tim@stmkc.com



Judy Kashka
 Funeral & Wedding Liturgist
judy@stmkc.com



Father Pius Wesonga, AJ
 Associate Pastor
 x203 frpwesonga@stmkc.com



Peggy Lucas
 Pastoral Associate/Outreach
 x210 peggy@stmkc.com

Parish Office Hours (until further notice)

Office Hours: M-W 8:45am-3:30pm; T-Th 8:45am-5pm
 F 8:45am-1pm

Finance Ministry Team

Justin Hicks, Chair
 Mark Meierhoffer
 Bruce Gregg

Stefanie Bresette
 Laura Christopherson

Parishioner volunteers serve for three-year terms.
 Questions? Email FinanceCouncil@stmkc.com.



Diocesan Ombudsman

Joe Crayon crayon@ombudsmankcsj.org or
 816-812-2500

To register as a member of Saint Thomas More Parish...

...go to stmkc.com/registration, contact the parish office or pick up a registration form on the Information table in the church narthex.

Safe Environment Information

The Diocese of Kansas City~Saint Joseph is committed to combatting sexual abuse in the Church. If you are a victim of sexual abuse, or if you *observe or suspect* sexual abuse:

- Call the **MO Child Abuse Hotline**, 1-800-392-3738 (if the victim is currently under the age of 18), or **KS Protection Report Center**, 1-800-922-5330, and
- Contact your **local law enforcement agency** or call 911, and
- **If the abuse involves a priest, deacon, employee or volunteer** of the Diocese of Kansas City~Saint Joseph, report the suspected abuse to the **Diocesan Ombudsman, Joe Crayon**, at 816-812-2500 or crayon@ombudsmankcsj.org.

The diocese has a sincere commitment to providing care and healing resources to victims of sexual abuse and their families. Please contact the Victim Advocate at 816-392-0011 or victimadvocate@diocesekcsj.org.

FOR ADDITIONAL INFORMATION, contact:

Joan Sandford, Parish Safe Environment Coordinator, safety@stmkc.com or 816-942-2492 x202, OR

Tracy Stewart, School Safe Environment Coordinator, stewart_tracy@stmcyclones.org or 816-942-5581.

Jennifer Prusa, Journey to Bethany Director, 816-683-8999 or jprusa@diocesekcsj.org (healing for survivors)

Mass Intentions

Mon:

11/25 8:15AM Medical Technicians

Tues: **6:15AM Nurses**

11/26 ****8:15AM Michael Bua[†]**

Wed: **6:15AM Thomas Fahey[†]**

11/27 8:15AM Lawrence Martinez[†]

Thur:

11/28 **9:00AM Barney & Rosemarie Maguire[†]**

Fri:

11/29 9:00AM Dora Gallegos[†]

Sat:

11/30 4:00PM Gregory Larm[†]

Sun: **7:30AM Patrick & Joan Hughes[†]**

12/1 9:00AM Our Parishioners

11:00AM Carolyn Rasmussen[†]

[†] Deceased

****School Mass**

To request a Mass intention, stop by the parish office or call 816-942-2492. Suggested donation per Mass is \$10.

SCRIPTURE READINGS

For the daily readings, visit usccb.org/bible/reading. Have the readings sent to your email each day, hear the readings read to you, or watch a video with a reflection based on the readings.



TJ BRENNAN - *Parishioner*
 816.394.2224
 • HOME • AUTO • BUSINESS • LIFE
 tjbrennan@cekinsurance.com
 www.cekinsurance.com

WE APPRECIATE OUR
 ADVERTISERS!

The Genuine. The Original.



Overhead Door Company of Kansas City™
 A **SPACE** Company



SERVING KANSAS CITY *SINCE 1927*

REPAIR + REPLACE GARAGE DOORS AND OPENERS
 RESIDENTIAL DOORS

FREE ESTIMATES • 816-320-5430
 OverheadDoorKansasCity.com

LET'S GROW YOUR BUSINESS

Place Your Ad Here
 and Support Our Parish!

CONTACT ME
Jon Becker

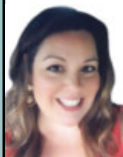
jbecker@4LPi.com
(800) 950-9952 x2536

SHORT STAFFED?

Place an ad here to find new
 local talent for your business.



CALL 800-477-4574



Shelly Balthazor
Real Estate Specialist, Parishioner
 816-591-5277
 shellyb@reecenichols.com



*1 Real Estate Team in MO & KS
 *1 KC Real Estate Team in Homes Sold
 *1 in Sales Volume
 *3 Nationally Ranked Team in the US
 *740+ Million in Sales Volume in 2021

**SUPPORT OUR
 ADVERTISERS!**



STATE FARM®
INSURANCE AGENT

Julie Stoll

ChFC®, CPCU®, CLU®



For ad info. call 1-800-950-9952 • www.4lpi.com

St. Thomas More, Kansas City, MO

C 4C 02-0710



A Fresh and Polished Approach to Oral Health

4851 WEST 134TH STREET • LEAWOOD • KANSAS 66209-7803
913.681.8300 • WWW.JEFFTHOMPSONORTHO.COM

JEFFREY J. THOMPSON, D.D.S., M.S.
DIPLOMATE AMERICAN BOARD OF ORTHODONTICS

catholicmatch®
Missouri



CatholicMatch.com/MO



WALK-IN CLINIC
for sports injury or fractures

M-F: 9am -11am, 1pm - 3pm. Ages 0 -16

**Pediatric Orthopaedic
Surgery Associates**

5250 W. 94th Terrace, Prairie Village, KS 66207

913-451-0000

www.pedorthokc.com

Like a good neighbor **State Farm**
State Farm is there.®



13012 Fuller
P.O. Box 230
Grandview, MO 64030

STATE FARM INSURANCE COMPANIES
HOME OFFICES BLOOMINGTON, ILLINOIS

Larry B. Langford,
CLU CHFC

Bus.: 816-761-8711
Res.: 816 217 8112

larry.langford.b5u9@statefarm.com



RE/MAX®

State Line Real Estate



Direct Line: (913) 312-3630

Mobile: (816) 835-3230

TinaGaughan@gmail.com

TinaGaughan.com

11251 Nall Ave. • Leawood, KS 66211

Tina R. Gaughan
REALTOR®, SRES

Each Office Independently Owned and Operated



**Transforming Homes
Inside & Out
Since 2001**

816-604-9873

www.odysseypainting.com
odysseypainting21@gmail.com

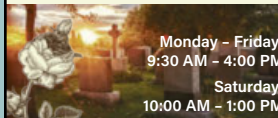
Exterior/Interior Painting • Deck/Fence Staining
Siding/Window/Door/Garage Door Replacement



6842 Troost Ave
Kansas City, MO 64131

816-333-0075

kcmonument1888@outlook.com



Monday - Friday:
9:30 AM - 4:00 PM
Saturday:
10:00 AM - 1:00 PM

learn.
grow.
soar.

FORMING MEN AT
THE ROCK
ROCKHURST HIGH SCHOOL

WWW.ROCKHURSTHS.EDU/ADMISSIONS



PILEGGI PAINTING

Exterior - Interior - Decks - Residential & Commercial

Frank Pileggi - Owner

www.PileggiPainting.com

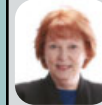
frank@pileggipainting.com | 913-558-5204

**Catholic Family
CREDIT UNION**

Full Service For All Your Needs
816-444-7440

9237 Ward Parkway, Ste 114
www.catholicfamilycu.com

Savings Insured by the NCUA up to \$250,000



Mary Owens Boesen
Parishioner
Life & Health Insurance Sales

MEDICARE

Let me help you! 30 years experience

816-942-0666 • mboesen@kc.rr.com

WE APPRECIATE OUR

WE APPRECIATE OUR
ADVERTISERS!



Brady Crawford

Insurance & Financial Services

816.333.5853

coveredbycrawford.com

Locations in Waldo & Martin City



RENTERS HOMEOWNERS CONDO AUTO PET PERSONAL ARTICLES BUSINESS LIFE HEALTH

IF YOU LIVE ALONE

MDMedAlert!™ As Low As

✓ Ambulance ✓ Police/Fire **\$19⁹⁵** /mo.

✓ Family/Friends ✓ GPS & Fall Alert

CALL NOW 800.808.9294 #md-medalert.com



CottageCare

HOUSE CLEANING AT ITS BEST!

For Pricing call (913) 469-0220
or visit cottagecare.com



JD & Jakes
THE BARBER SHOP

(816) 569.2887 (cuts)

13033 Holmes Rd.



SANDTRAP
Bar & Grill

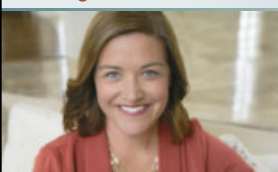
(816) 942-0990 | 13037 Holmes Rd.



URGENT CARE
AT HOME

In home evaluations and
treatments helps you skip the
wait and get the care you need,
when and where you need it.

Meghan Macy
FNP-BC, APRN, NE
(816) 223-7638
www.urgentcareathomekc.com

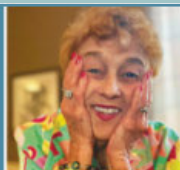


The Madison
SENIOR LIVING



Learn more about life
at The Madison!

Schedule a Tour | (816) 327-1726



For ad info. call 1-800-950-9952 • www.4lp.com

St. Thomas More, Kansas City, MO

B 4C 02-0710



Buy one Breakfast, Lunch or Dinner Combo meal
and get one of equal or lesser value **FREE**

Limit one coupon per customer per visit. Please present coupon when ordering.
Not valid with any other offer. Expires April 30, 2025
Code 0710

24 Highway McDonald's
11700 East US Highway 24
Independence, MO

Eastland McDonald's
18910 East US Highway 40
Independence, MO

Susuehanna McDonald's
16235 East US Highway 24
Independence, MO

BR Crossing McDonald's
11801 East US Highway 40
Independence, MO

40 Highway McDonald's
920 SW US Highway 40
Blue Springs, MO

North 7 McDonald's
814 NW State Route 7
Blue Springs, MO

REDEEMABLE ONLY AT:

Woods Chapel McDonald's
1515 NW Woods Chapel Rd
Blue Springs, MO

South 7 McDonald's
3116 South 7 Highway
Blue Springs, MO

Chouteau McDonald's
4400 N Chouteau Traffic Way
Kansas City, MO

Broadway McDonald's
3741 Broadway Boulevard
Kansas City, MO

Red Bridge McDonald's
11001 Hickman Mills Drive
Kansas City, MO

Blue Ridge McDonald's
5260 Blue Ridge Boulevard
Raytown, MO

Carpets | Area Rugs | Upholstery
Hardwood Floors | Air Ducts
Tile & Grout | Residential/Commercial

WE CLEAN GREEN! zerorez
the right way to clean

(816) 425-3655
www.zerorezkc.com Steven Phelps

Better Homes and Gardens REAL ESTATE KANSAS CITY HOMES

Judy Sheaman, ABR
Sales Executive with 26 Yrs. Experience
Parishioner
Licensed in Kansas & Missouri

Office: 913-981-2827
Cell: 816-304-2888
KC Magazine
"Five Star Real Estate Agent"
for overall customer satisfaction since 2005

Owen LUMBER CO.

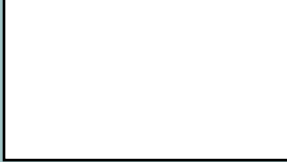
KC's Leading Decking & Andersen Window Supplier

Mike McGlinn
Parishioner

816-331-2211
OwenLumber.com

ALLIED CONCRETE PRODUCTS
12800 2nd St. Grandview
816-966-8836
Judy, Pale, & Amparo Furey
Parishioners

RESIDENTIAL SEWAGE TREATMENT COMPANY, INC.
12800 2nd St. Grandview
816-966-8885
Kathy Maguire & Tom Fritts
Parishioners



LET'S GROW YOUR BUSINESS
Place Your Ad Here and Support Our Parish!

CONTACT ME Jon Becker

jbecker@4LPi.com • (800) 950-9952 x2536

MCGILLEY MEMORIAL CHAPELS SINCE 1899

Funerals | Cremations | Receptions | Celebrations
"Celebrating Lives"

Patrick McGilley | Joe Haster | 816-942-6180 | www.mcgilleystatelinechapel.com

Place Your Ad Here and Support our Parish!

Instantly create and purchase an ad with

AD CREATOR STUDIO



4lpi.com/adcreator

Muehlebach Funeral Care & Cremation Services

MUEHLEBACH FUNERAL CARE

816-444-2060
www.muehlebachchapel.com

"Our Family Dedicated to Serving Yours."

Parishioners:
Steve & Nicole Pierce
Jordan Pierce
STM Class of 2011
Jenny Mertes
Tom Reagan

LINC Local Investment Commission

Part-time Child Care Jobs Now Hiring!

Apply at: kdinc.org/parttimejobs

LINC Caring Communities Sites
North Kansas City - Kansas City Public Schools
Center - Hickman Mills - Grandview

MALACHY CONNOR DESIGN & LANDSCAPE

Landscape Design & Installation

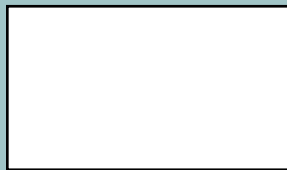
Let me design your dream landscape now!

Book now
913-515-4166
MALACHY@CONNORLANDSCAPING.COM

ACCESS YOUR POTENTIAL

AVILA UNIVERSITY

Avila.edu/catholic



WE APPRECIATE OUR ADVERTISERS!

John Sweeney CCIM
Reece Commercial
Commercial Real Estate
(913) 945-3718 (913) 461-6326 mobile
John@ReeceCommercial.com
Brokerage Investment Development Consulting



• Auto
• Home
• Life
• Commercial

We are an Independent Agency With Over 30 Years of Experience

Your financial partner throughout your life.

Matthew Pomianek, AAMS*, Financial Advisor, Parishioner
5000 W 95th St Ste 103
Prairie Village, KS 66207
913-648-6084
matthew.pomianek@edwardjones.com

Member SIPC
Edward Jones
MAKING SENSE OF INVESTING

BURIAL • ENTOMBMENT • CREMATION • TRADITIONAL CEREMONIES • CELEBRATIONS OF LIFE

CULLEN FUNERAL HOME, INC.

612 W Foxwood Dr
Raymore, MO 64083
(816) 322-5278

PLAN AHEAD
WE'LL TAKE THE FIRST STEP WITH YOU.

NESTEL INSURANCE AGENCY
"Your Customized Financial Partner"

Mary Nestel
816-361-6442
9233 Ward Parkway Ste 124
Kansas City, MO 64114

www.nestelinsurance.com
info@nestelinsurance.com

BLIND BOX BBQ

PARISHIONER OWNED
JOE & MAGGIE TULIPANA

SHAWNEE
13214 W 62ND TERR, SHAWNEE, KS 66216

VILLAGE WEST (INSIDE NEBRASKA FURNITURE MART)
1601 VILLAGE WEST PKWY, KANSAS CITY, KS 66111

WE CATER! 913.268.488Q
catering@blindboxbbq.com

BLIND BOX BBQ
BLINDBOXBBQ.COM