



OUR **MISSION** IS TO PROVIDE A WELCOMING, INCLUSIVE, AND LOVING COMMUNITY BY PROCLAIMING AND LIVING GOD'S WORD THROUGH WORSHIP, EDUCATION, AND SOCIAL JUSTICE.

# SAINT THOMAS MORE PARISH

11822 Holmes Road, Kansas City, Missouri 64131 • [stmkc.com](http://stmkc.com)

December 1, 2024



## BULLETIN ONLINE

this and last week's at [stmkc.com](http://stmkc.com)

Subscribe at [stmkc.com/emailme](http://stmkc.com/emailme) →



## MASSES

WEEKDAY: Mon & Fri 8:15am,  
Tues, Wed, Thu 6:15am & 8:15am  
First Sat 8:15am

WEEKEND: Sat 4pm, Sun, 7:30am, 9am & 11am

MASS ONLINE CONTINUES

## RECONCILIATION

Individual Confessions: by appointment and Tuesdays and Thursdays, 5-6pm

Saturdays, 3-3:45pm

First Saturdays, 7:15-8am

## OUR CLERGY

Father Justin Hoye, Pastor

Father Pius Wesonga, AJ, Associate Pastor

In Residence: Father Paul Sappington

## AT THE PARISH OFFICE

Office Hours:

Mon. & Wed. 8:45am-1pm, 2-3:30pm\*

Tues. & Thurs. 8:45am-1pm, 2-5pm\*

Friday 8:45am-1pm

\* lunch hour 1-2pm

Parish Office 816-942-2492

Office directory at [stmkc.com](http://stmkc.com) and p.9

## AT THE SCHOOL OFFICE

Linda Crosthwait Principal

Tracy Stewart Assistant Principal

Office hours: Mon.-Thurs., 8am-3:45pm;

Fri., 8:30am-3:30pm

School Office 816-942-5581

School fax 816-941-2450

School email directory at [stmkcschool.org](mailto:stmkcschool.org)

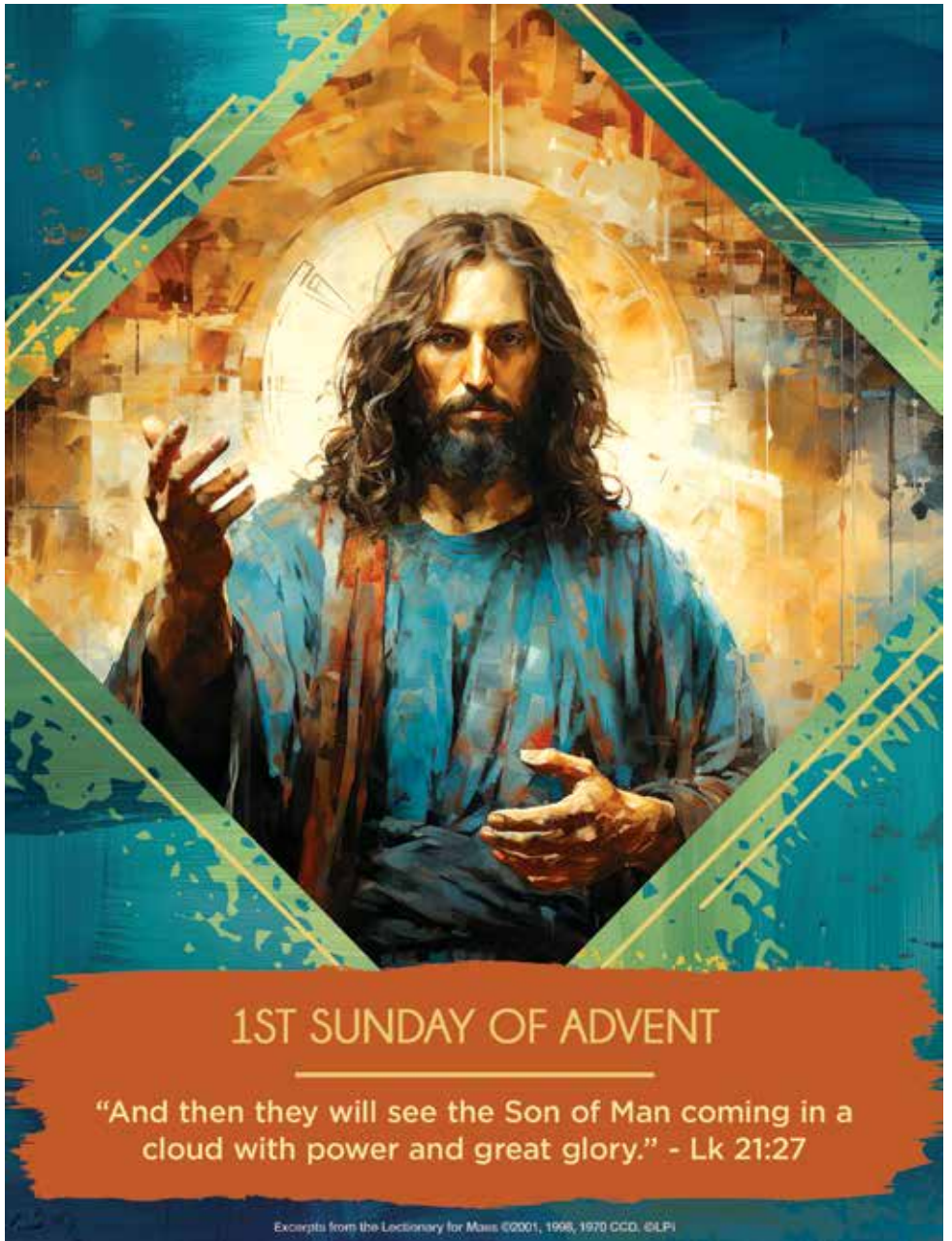
SCHOOL TOURS: contact Principal Linda Crosthwait at 816-942-5581 or [crosthwait\\_linda@stmcyclones.org](mailto:crosthwait_linda@stmcyclones.org)

## SAFE ENVIRONMENT

All employees and volunteers working with minors are required to:

- Create an account at [virtus.org](http://virtus.org)
- Attend a Protecting God's Children workshop
- Complete a mandated reporter training
- Submit to a background check
- Read the online Policy on Ethics and Integrity in Ministry

For more Safe Environment information, including reporting and victim resources, see page 10.



## 1ST SUNDAY OF ADVENT

"And then they will see the Son of Man coming in a cloud with power and great glory." - Lk 21:27

Excerpts from the Lectionary for Mass ©2001, 1998, 1970 CCB, ©LPI



## Retirement Fund for Religious

Please give to those who have given a lifetime.

COLLECTION  
NEXT WEEKEND



Faithful People of Saint Thomas More,

This is the last weekend to turn in (unwrapped) gifts for the Giving Tree, benefiting those who utilize Catholic Charities and Journey to New Life. Thanks to all who are participating in these efforts, as well as those who participated in the Seton Center Red Bag collection earlier this month.

As I mentioned last month in a homily, the diocese is encouraging parishes to commit more fervently to our call to evangelize. To that end, we begin this week, with the new liturgical year, to include a full page in our bulletin exploring how you and I can better share Good News in our world.

This summer, the diocese restructured our deaneries in the diocese, shrinking these geographical groupings of parishes from 14 deaneries down to 6. Our realignment at STM joins us with several parishes to the east of us, and our new deanery is publicizing all of our weekly confession times during Advent (by day of the week), to encourage individuals to utilize the sacrament. (Those can be found in the next column.)

Remember: Our ability to evangelize is dependent on us first receiving such good news ourselves, and receiving God's mercy in the wake of our sinfulness is a powerful source of grace.

Also, a change from previous pronouncements. The Solemnity of the Immaculate Conception (December 8th), which is transferred to Monday, December 9th this year, **will be a holy day of obligation.** This is a recent change (last month) for all parishes, as even our parish calendars have the day listed incorrectly. Our Mass times for the day will be 6:15AM, 8:15AM - where our school community will join us - and 6PM.

Father Justin

P.S. 2025 Parish Calendars are available in the narthex this weekend!

## Advent Confession Times in our Deanery

### Mondays

- 7-7:30AM (Christ the King)
- 7:30-7:50AM (Coronation)
- 11-11:50AM (Christ the King)

### Tuesdays

- 6:30-6:50AM (Coronation)
- 7-7:30AM (Christ the King)
- 11-11:50AM (Christ the King)
- 5-6PM (St. Thomas More)**
- 5:15-5:45PM (St. Peter)

### Wednesdays

- 7-7:30AM (Christ the King)
- 11-11:50AM (Christ the King)
- 5:30-5:50PM (Coronation)
- 6-7PM (St. Regis)

### Thursdays

- 6:30-6:50AM (Coronation)
- 7-7:30AM (Christ the King)
- 11-11:50AM (Christ the King)
- 5-6PM (St. Thomas More)**

### Fridays

- 7-7:30AM (Christ the King)
- 7:30-7:50AM (Coronation)
- 11-11:50AM (Christ the King)

### Saturdays

- 7:15-8AM (St. Thomas More)**
- 7:30-7:50AM (Coronation)
- 2-2:45PM (St. Regis)
- 3-3:30PM (St. Sabina)
- 3-3:45PM (St. Thomas More)**
- 3-3:50PM (Coronation)
- 3-3:50PM (Christ the King)
- 3:30-4:15PM (St. Elizabeth)
- 4:15-4:45PM (St. Peter)
- 4:15-4:50PM (Holy Martyrs)

### Sundays

- 9-9:50AM (Coronation)
- 9-9:50AM (Holy Martyrs)
- 6:30-7:30PM (Christ the King)

SAINT THOMAS MORE PARISH  
**Annual Stewardship**

**STM Annual Stewardship & Diocesan Annual Appeal**

**Commitment Weekend has passed.**

If you have not returned your pledge form, please do so soon! Your returned form helps us to budget responsibly. For those who contribute online, it also lets us know you intend to continue your contribution. Please return pledge forms by the end of this calendar year so future contributions can be applied toward your pledge.



**If you have not received a packet,** contact Joan Sandford, joan@stmkc.com or 816-942-2492 x202. Or pledge online by using the QR code above or visiting stmkc.com and clicking on the Annual Stewardship box.

**THANK YOU** for all you do at and for Saint Thomas More: your prayers and continuing formation, supporting the many ministries of the parish, caring for the school students and their families, keeping the utility bills paid, and always ready to reach out to help others in need. STM is an amazing parish because of you and your support!

**Annual Stewardship Pledge Report**  
**Goal: 100% Participation**

As of 11/21/24, 323 households returned pledge forms.

**Diocesan Annual Catholic Appeal (ACA)**

**Goal: 100% response rate**

As of 11/18/24 :

- 117 STM households pledged \$101,135
- Across the diocese 3,064 households pledged \$1,063,941 toward a \$2 million goal.

*One Family* RESTORED IN CHRIST, EQUIPPED FOR MISSION



**Healing Our Family**

*Tending wounds and accompanying hearts to freedom in Christ*

**Come Home to Communion**



**Daily Masses for Advent**

Monday through Friday

6:15 & 8:15am

Saturday, 8:15am

**Weekend Masses:**

Saturday Vigil, 4pm

Sunday, 7:30am, 9am & 11am

**Sign Interpreted services:** 2nd Sundays at 11am

**Masses are recorded daily;** find them at stmkc.com or youtube.stmkc.com.

**Please hold in prayer**

CONTACT THE PARISH OFFICE, BULLETIN@STMKC.COM OR 942-2492 X202, TO ADD OR REMOVE NAMES FROM THE PRAYER LIST. IF YOUR NAME IS DROPPED OFF AND YOU ARE IN NEED OF ADDITIONAL PRAYERS FOR HEALING, CONTACT THE PARISH OFFICE. **NAMES APPEAR EVERY OTHER WEEK.**

**...our family and friends in the military:**

Thomas Edwards  
Seth Gulsby

John Hylander  
Steve Janner

Sarah Katz  
Brian Owara

Alycia Pouch  
Nathan Pouch

John P. Sullivan

**...our parishioners who are sick:**

Patrick Adams  
Roberta Aguirre  
John Altergott

Bill Cusick  
Beth Dierks  
Christine Edmunds

Carol Gretencord  
Iva Hamilton  
Carol Katzer

Kathy Lawson  
Susie Reardon  
Laura Rupp

Ed Thomas  
Kathy Vervaecke  
Anita Wagner

**...our family and friends who are sick:**

Duane & Melinda Brown  
Alissa Carter  
Rachel Casady

Joy Davie  
Charles Haster  
Glen Horton

Jerry Job  
Julie Aguirre Johnson  
Richard Layton

Brian Robinson  
Missy Seaman

Glnny Torchia  
Lester Wells

## The Light is on for You - Advent Schedule

Confessions are offered in the reconciliation room.

Tuesday, 5-6pm                      Thursday, 5-6pm

Saturday, 7:15-8am and 3-3:45pm

and by appointment

## Church Hours for Private Prayer

Monday - Friday, 6am-9pm

Saturday - Sunday, 7am-9pm

## Pray the Rosary with Others

### Sundays, after 9am Mass

Join with the Knights of Columbus in prayer.

### Monday-Friday, after the 8:15am Mass, Chapel

All are welcome to pray the rosary or the Fatima devotions with others on first Saturdays, after 8:15am Mass.

## Eucharistic Exposition at STM

### Sundays, Noon-9pm in the Church

Regular time spent with the Lord in Adoration can be life changing! First Sundays, Noon-1pm, has music.

**Like anything else that is worthwhile in life**, it takes a certain degree of discipline to become more eucharistic in your prayer life. Remember, however, that God is never outdone in generosity.

## Care & Support

### Photos of Loved Ones

If you missed getting your photo off the table in the church, please check at the parish office. Thank you!

### Grief Peer Support Group

#### For Advent: Wednesdays (Dec. 4, 11, 18), 4-5pm

The group will meet weekly during Advent. Grief is difficult and can be experienced as a result of any kind of loss. As we support each other, we also use various resources to better understand our grief. Questions? Contact Pastoral Associate, at [Peggy@stmkc.com](mailto:Peggy@stmkc.com) or 816-942-2492 x210.

### Courage and Encourage Apostolates

**Courage** Kansas City is the local chapter of the Courage Apostolate. Spiritual support is offered to Christian men and women with same-sex attractions who desire to live chaste lives in accordance with the teachings of Scripture and Catholic moral teaching.

**Encourage** offers support for families of those with same-sex attraction or gender dysphoria.

Monthly meetings are held at a location convenient for those throughout the KC metro area. Call 816-714-2371 if you are interested in either support group. Visit [kcsjfamily.org/courage-encourage](http://kcsjfamily.org/courage-encourage) to learn more.

## Saint Thomas More Christmas Drive

### Gift Tags: Must be returned by Sunday, Dec. 1

Thank you for the gifts you contributed this season to Journey to New Life and Catholic Charities!

## Food Drive This Weekend

### November 30/December 1, in the Narthex

Our monthly food drive helps people who are struggling to put food on their tables and is distributed by Seton Center and our Red Bridge food pantry.

Please bring the following items for Seton Center: canned tuna, meats, low-sodium soups, vegetables and fruit; pancake mix & syrup, sugar, dry milk, boxed meals, pasta & sauce, peanut butter & jelly, rice, jello, condiments, white beans, laundry soap, toiletry items, and paper goods.

**To make a monetary contribution to Seton Center**, visit [setonkc.org](http://setonkc.org) and click on the donate tab.

### Red Bridge Pantry Special Requests for December:

- canned chicken (small and large) - out; chili, stew, sloppy joe (Manwich); pasta (Spaghetti-o's, etc.) and pasta sauce; peas, mixed veg., carrots, mushrooms, sweet potatoes, spinach, etc.; pineapple, pears, peaches, cocktail; jelly
- laundry detergent (small bottles), facial tissue
- 1# bags white rice, Hamburger Helper type boxes, canned and dry beans, instant mashed potatoes

**As always, thank you for your amazing generosity!!**

## The Magic of Morning Glory

### December 4, 5:30-7:30pm at The Hogan Center

This annual fundraiser for Morning Glory Ministries, emceed by Abby Eden of Channel 4, includes a terrific Italian dinner, music by Opus76, live and silent auctions, and, of course, magic. Let the magic of giving transform lives and create a brighter future for those living on the streets of Kansas City. The Hogan Center is located on the campus of the Cathedral of the Immaculate Conception, KCMO.

Visit [moringglorykc.org](http://moringglorykc.org) for more information, to RSVP or to make a contribution. Morning Glory Ministries serves 45,000+ free meals annually.

## Collection for Religious Retirement - December 8

Our aging religious need your help. More than 24,000 senior sisters, brothers, and religious order priests have dedicated their lives to service usually, for little to no pay. Today, their religious communities do not have enough retirement savings. Your donation can help

bridge this gap, providing critical support for their essential care, medicine, and daily needs. Please give back to those who have given a lifetime. Visit [retiredreligious.org](http://retiredreligious.org) for more information.

### October Financials

Regular - \$234,420.58      Plate - \$3,187.56  
Facilities - \$1,083.70  
Education Fund - \$274.42      School - \$1,135.93  
Mission - \$5,631.00  
All Saints - \$355.00

**Thank you** for your continued contributions to STM!

### Ways to Contribute to STM Church

1. Online giving portal: [stmkc.com/stewardship](http://stmkc.com/stewardship). Click on "Online Giving." The portal gives you the tools to manage your recurring giving or make a one-time gift.
2. Text-to-give - Great for quick one-time gifts! Simply text an amount to 816-272-1040 and it will step you through.

### Please help STM credit your contribution to YOU!

Did you know that some bank and stock contributions arrive at STM with no name attached? Before you make a stock contribution, please contact Tim Waris (816-942-2492 x218 or [tim@stmkc.com](mailto:tim@stmkc.com)) or visit [stmkc.com](http://stmkc.com). (Click on Stewardship and Alternative Giving to find the stock donation form.) If you contribute by having a bank send STM a check, please instruct your bank to include your name on the check. Thank you!

### ...and help STM honor your intention!

When you contribute, particularly at this time of year, please be sure to note the year for which you are giving and the purpose of your contribution (tithe, HVAC, etc.) As always, THANK YOU for your contributions!

*One Family* RESTORED IN CHRIST, EQUIPPED FOR MISSION



**Growing God's Family**

*Activating our baptismal call to holiness and being disciple makers*

### Advent Series for (Younger) Moms

#### Day/Time to be determined

STM is hosting a small group Advent study for moms with grade school children or younger. We will be walking through Heather Khym's book *Encountering Emmanuel: A Guided Advent Journal for Prayer and Meditation*. The group will be led by parishioner Jill Rippee once a week during the 4 weeks of Advent. Space is limited to 15 people. Please email Jill for more information at [Jillnicole84@gmail.com](mailto:Jillnicole84@gmail.com). All materials needed will be

provided.

Here is a brief description from the book: *Embark on a transformative journey this Advent with Heather Khym, cohost of the Abiding Together podcast, as she extends a heartfelt invitation to embrace stillness and silence amid life's chaos, allowing God to dwell in the depths of your being. While the world moves at an ever-faster pace, Heather encourages you to pull back from the hustle and create space for our Savior to come into every area of your life—to transform and heal it through his love.*

### G.I.F.T. Growing in Faith Together

#### Tuesdays, 9-10:30am, Bauman Room of More Hall

Women gather each week to break open the Sunday readings. All are welcome to join in! Questions? Email Becky at [bturmer727@yahoo.com](mailto:bturmer727@yahoo.com).

### Considering becoming Catholic?

#### Inquiry: Tuesdays, 6:15-7:30pm, More Hall A

#### Dec. 3: Prayer & Worship: Public & Private Devotions

Sessions are for those from other Christian traditions or those with no religious background. Journey with other individuals to learn more about the Catholic Church and to discern God's invitations offered through the Catholic Church. Sessions are open to adults and children, baptized and not. They are also open to Catholics who would like to take advantage of this formation opportunity. Questions? Contact Father Justin, 816-942-2492 x204 or [frjhoye@stmkc.com](mailto:frjhoye@stmkc.com).



### School of Religion (SOR)

#### Wednesdays, 6:15-7:30pm, More Hall A

School of Religion provides catechesis for grade school children, grades 1-8, who do not attend Catholic school. Visit [stmkc.com](http://stmkc.com) to register online. Click on the "School of Religion" box. Questions? Email Susan at [aquiel2000@yahoo.com](mailto:aquiel2000@yahoo.com).

### God's Recipe for a Wonderful Life/10 Commandments

#### Last Session: Dec. 5, 7-8:30pm

If you missed the in-person series at STM, visit [stmkc.com](http://stmkc.com) to register for this program on your own. You can view the video series at home, with family and friends, or alone.

### Children's Liturgy of the Word

#### Sunday, December 15, at 9am Mass

Children through 2nd grade are invited to participate in Children's Liturgy of the Word. For questions or to join the team of adult volunteers, contact Joan Sandford, [joan@stmkc.com](mailto:joan@stmkc.com) or 816-942-2492 x202.

# To Commemorate Saint Thomas More's 60th Anniversary

*The Faith in Action Team  
invites every parishioner  
to engage in*



## ACTS OF KINDNESS

*Each month, between  
October 2024 and June  
2025, we will feature  
suggested small acts of  
kindness for you and your  
family to try,*



- ⑥ Visit with a friend whom you haven't seen in awhile
- ⑥ Return a grocery cart to the store for someone else
- ⑥ Donate clothing or shoes you don't need to a local charity
- ⑥ Give a blessing bag with snacks and a note to someone
- ⑥ Spend an hour in Adoration for someone in distress
- ⑥ Donate a book to a little free library
- ⑥ Do a chore for a sibling
- ⑥ Help your parents make dinner
- ⑥ Take a walk and pick up litter you see along the way
- ⑥ Give blood



# Sunday Q&A

Your Faith in Focus

First Sunday of Advent, Year C

## THREE SIMPLE ADVENT ESSENTIALS

### How do I make room for Christ this Advent?

It can be easy for us to rush into the joy and excitement of Christmas without truly living the Advent season. Here, Dr. Edward Sri offers three simple and essential ideas for Advent.

#### 1. Penance

Advent, like Lent, is a penitential season. It's an opportunity to make space for the great gift of Christ by fasting and making small sacrifices. Of course, Advent fasting and sacrifice might look a bit different from our Lenten practices, but whenever we make sacrifices with love, we learn to be detached from the things of this world so that we can be more united with Christ.

#### 2. Devotions

Spend more time with Jesus in prayer, in Scripture, and in the sacraments. Advent offers us a special opportunity to deepen our relationship with our Savior and enkindle the love in our hearts for him. Strive to go the extra mile in your relationship with Jesus. Stop by the Adoration chapel, attend daily Mass, spend more time with Scripture, pray a decade of a Rosary before a meal, read a spiritual book, or simply be more intentional about meeting Jesus in the present moment.

#### 3. Confession

Make sure you go to confession this Advent. Set a date to go as you navigate the hustle and bustle, and consider that there may be special opportunities for confession at your parish during this season beyond the times normally scheduled. Through confession, we are freed of the sins and shame that weigh us down so that we can peacefully and joyfully welcome Jesus into our lives.

## SPRED Class

### Monday, December 9, 6:30-8:30pm, More Hall

An adult group for the developmentally delayed meets about every other week to share their faith. Questions? Email Becky at bturner727@yahoo.com.

## More Friends (Parishioners 55+ years)

### Advent Event

#### Saturday, December 7, 9-11am in More Hall

More Friends will join other parishioners for the Advent Morning of Reflection. The morning will include a light breakfast and a guest speaker on the subject of Saint Thérèse of Lisieux, aka Little Flower. See you there!

### Miscellaneous Info

A leadership team is being assembled to guide this ministry for 2025. To add your name to the team, contact Beth at bethmgmo@att.net or 816-547-5541.

Members may pick up directories at the parish office.

## 9th Annual Advent Morning of Reflection

### Saturday, December 7, 9-11am

Join other STM parishioners for an uplifting Advent morning, discovering the joy and spirituality of the "Little Way" of Thérèse of Lisieux. Come learn about "doing ordinary things with extraordinary love" during this Advent season. Our presenters - Deacon Lee Butler, Curé of Ars Parish, and Hayley Shaver, STM Evangelization & Discipleship Coordinator - will share the story of the "Little Way" and how you can practice it in your life. Deacon Butler will have a relic from Saint Thérèse of Lisieux and invites you to bring your rosary or medal.

ALL are welcome to this special morning of prayer, music, and discussion. The day will begin with 8:15am Mass and then we will gather in More Hall, 9-11am. A light breakfast will be served.

Please **RSVP by Wednesday, December 4**, to Marla at mjbyrne0926@swbell.net.

## Living Waters at Saint Thomas More

### Mondays (January 6-May 5), 7pm

How does Jesus transform our brokenness into a gift to His Church? We can begin by applying His mercy to the ways we fail to love well: our sexual sin, sins against us, giving too much, or withholding ourselves altogether. We will seek wholeness through honest admission of our brokenness. This confidential, in-depth prayer/healing group is for men and women, marrieds and singles. Email Katie at kcomiskey@desertstream.org for more info or to apply.

## Parish Calendar of Events

Sun., Dec. 1 - Gift Sorting, 11am-2pm, More Hall

Mon., Dec. 2 - Children's Choir Rehearsal, 3:20-4:15pm

Kerygma Study, 4-5pm, Bauman Library  
STM Serves at One City Cafe, 4:15-6pm  
Faith in Action mtg., 6:30pm, Parish Office  
Tue., Dec. 3 - G.I.F.T., 9-10:30am, Bauman Library  
Kerygma Study, 2-3pm, Bauman Library  
Kerygma Study, 6:30-7:30pm, Bauman Library  
Wed., Dec. 4 - Kerygma Study, 10-11am, Bauman Library  
Grief Peer Support, 4-5pm, Bauman Room  
School of Religion, 6:15-7:30pm, More Hall A  
Thu., Dec. 5 - Kerygma Study, 10-11am, Bauman  
Guatemala mtg., 6pm, Parish Office  
First Reconciliation (School), 6pm, Church  
10 Commandments series, 7-8:30pm, More Hall  
Sat., Dec. 7 - Advent Morning of Reflection, 9-11am,  
More Hall  
Sun., Dec. 8 - Religious Retirement collection  
Mon., Dec. 9 - Feast of the Immaculate Conception of  
the Blessed Virgin Mary (observed)  
Masses at 6:15am, 8:15am, 6pm  
Children's Choir Rehearsal, 3:20-4:15pm, Church  
Kerygma Study, 4-5pm, Bauman Library  
SPRED, 6:30-8:30pm, More Hall B/D  
Tue., Dec. 10 - G.I.F.T., 9-10:30am, Bauman Library  
No OCIA session  
Kerygma Study, 2-3pm, Bauman Library  
Kerygma Study, 6:30-7:30pm, Bauman Library  
Wed., Dec. 11 - Kerygma Study, 10-11am, Bauman  
School of Religion, 6:15-7:30pm, More Hall A  
Parish Office closes at 1pm  
Thu., Dec. 12 - Kerygma Study, 10-11am, Bauman  
Knights of Columbus mtg., 7:15pm, More Hall  
Sun., Dec. 15 - Children's Liturgy of the Word, 9am Mass

## STM School

Linda Crosthwait, Principal



816-942-5581 STMKC.COM/SCHOOL

## School Dates

Monday Advent Prayer Services, 8:15am & 2:40pm

Wed., Dec. 4 - PreK-4th Concert, 6:30pm, Flanagan Hall

Thu., Dec. 5 - Band Concert, 6:30pm, Flanagan Hall

Fri., Dec. 6 - 3rd Grade Rosary, 10am, Church

Saint Nicholas Parties

Holiday Pop-up Bar, 6pm, More Hall

Sun., Dec. 8 - Children's Choir sings at 11am Mass

Tue., Dec. 10 - School Adoration, 2-3pm, Church

Home & School mtg., 6:30-8:30pm, More Hall C



## Miracle on Holmes Road: An STM Pop-up Bar

### Friday, Dec. 6, 6pm in (a transformed) More Hall

Don't miss out! Purchase your tickets to Miracle on Holmes Road today!

Tickets are limited and selling fast, so be sure to get yours before they're gone. Every penny raised from this event goes directly toward providing bonuses for our hardworking school staff.

Can't attend the event? No problem! You can still contribute by making a donation. Simply visit our website at [stmauction.org](http://stmauction.org) and click on the "Teacher Bonus Fund" to donate. Have questions? Need help? Email Kathy at [stmkc.HomeandSchool@gmail.com](mailto:stmkc.HomeandSchool@gmail.com).

Thank you for your support in showing appreciation for our incredible staff and school!

## Hey, STM community!

Do you own a small business?! Our auction relies on donations from families, parishioners, and businesses in the surrounding community! We are still looking for items for our live and silent auctions, if you have any items, leads, or ideas please reach out to us! Below are a few ideas. No gift is too big or too small! What would you bid on?

**Suggestions** include vacation homes, video games, dining experiences, services, electronics, kid items, air-line miles, artwork, private transportation, adult experiences, sporting event tickets, barware, concert tickets, bottles of liquor/wine, venue rentals. Contact Jaqui, [jacobson.jaqui@gmail.com](mailto:jacobson.jaqui@gmail.com), with questions or to donate. We appreciate you!

## Football Frenzy Winners

### Week 11

\$750 (158) - Steven Moore; Alex Wendel

\$100 (148) - Kasey Hockman

\$75 (147) - John Ryan; Brooke Dienberg

\$50 (46) - Brian Ismert

\$25 (49) - Susan Belzer; Margaret Haugh

## Bulletin Deadline Changes

### Bulletin

December 8

December 15

December 22

(December 22 is the Christmas bulletin.)

December 29

January 5

### Due Date

Monday, Dec. 2, 9am

Monday, Dec. 9, 9am

Thursday, Dec. 12, 9am

Wednesday, Dec. 18, 9am

Friday, Dec. 20, 9am

## Parish Office Staff



Sharon Arnett  
Liturgy Coordinator  
x208 [sharon@stmkc.com](mailto:sharon@stmkc.com)



Bob Sandford  
Publications & Music Director  
x212 [bob@stmkc.com](mailto:bob@stmkc.com)



Mary Begnaud  
Receptionist  
x201 [mary@stmkc.com](mailto:mary@stmkc.com)



Joan Sandford  
Office Manager  
x202 [joan@stmkc.com](mailto:joan@stmkc.com)



Scott Dulle  
Building & Grounds Director  
[dulle\\_scott@stmcydones.org](mailto:dulle_scott@stmcydones.org)



Father Paul Sappington  
In Residence  
[frsappington@smacatholic.org](mailto:frsappington@smacatholic.org)



Father Justin Hoyer  
Pastor  
x204 [frjhoye@stmkc.com](mailto:frjhoye@stmkc.com)



Hayley Shaver  
Evangelization & Discipleship  
x223 [hayley@stmkc.com](mailto:hayley@stmkc.com)



Becky Johnson  
Finance Coordinator  
x224 [becky@stmkc.com](mailto:becky@stmkc.com)



Tim Waris  
Business Manager  
x218 [tim@stmkc.com](mailto:tim@stmkc.com)



Judy Kashka  
Funeral & Wedding Liturgist  
[judy@stmkc.com](mailto:judy@stmkc.com)



Father Pius Wesonga, AJ  
Associate Pastor  
x203 [frpwesonga@stmkc.com](mailto:frpwesonga@stmkc.com)



Peggy Lucas  
Pastoral Associate/Outreach  
x210 [peggy@stmkc.com](mailto:peggy@stmkc.com)

## Parish Office Hours (until further notice)

Office Hours: M-W 8:45am-3:30pm; T-Th 8:45am-5pm  
F 8:45am-1pm

## Finance Ministry Team

Justin Hicks, Chair

Mark Meierhoffer

Bruce Gregg

*Parishioner volunteers serve for three-year terms.*

Questions? Email [FinanceCouncil@stmkc.com](mailto:FinanceCouncil@stmkc.com).

Stefanie Bresette

Laura Christopherson



## Diocesan Ombudsman

Joe Crayon [crayon@ombudsmankcsj.org](mailto:crayon@ombudsmankcsj.org) or  
816-812-2500

## Victim Advocate

816-392-0011 or [victimadvocate@diocesekcsj.org](mailto:victimadvocate@diocesekcsj.org)

## To register as a member of Saint Thomas More Parish...

...go to [stmkc.com/registration](http://stmkc.com/registration), contact the parish office or pick up a registration form on the Information table in the church narthex.

## Safe Environment Information

The Diocese of Kansas City~Saint Joseph is committed to combatting sexual abuse in the Church. If you are a victim of sexual abuse, or if you *observe or suspect* sexual abuse:

- Call the **MO Child Abuse Hotline**, 1-800-392-3738 (if the victim is currently under the age of 18), or **KS Protection Report Center**, 1-800-922-5330, and
- Contact your **local law enforcement agency** or call 911, and
- After reporting to these civil and law enforcement authorities, report suspected sexual abuse of a minor or vulnerable adult to the Diocesan Ombudsman, Joe Crayon, at [crayon@ombudsmankcsj.org](mailto:crayon@ombudsmankcsj.org) or 816-812-2500 if the abuse involves a priest, deacon, employee or volunteer of the Diocese of Kansas City-St. Joseph.

The diocese has a sincere commitment to providing care and healing resources to victims of sexual abuse and their families. Please contact the Victim Advocate at 816-392-0011 or [victimadvocate@diocesekcsj.org](mailto:victimadvocate@diocesekcsj.org).

**FOR ADDITIONAL INFORMATION**, contact:

**Joan Sandford**, Parish Safe Environment Coordinator, [safety@stmkc.com](mailto:safety@stmkc.com) or 816-942-2492 x202, OR

**Tracy Stewart**, School Safe Environment Coordinator, [stewart\\_tracy@stmcyclones.org](mailto:stewart_tracy@stmcyclones.org) or 816-942-5581.

## Mass Intentions

Mon: 12/2	<b>6:15AM Catherine Giarraputo<sup>†</sup></b> 8:15AM Linda Verstraete <sup>†</sup>
Tues: 12/3	<b>6:15AM Dec'd members of Arnett/McKenzie family<sup>†</sup></b> 8:15AM Patricia Sweeny <sup>†</sup>
Wed: 12/4	<b>6:15AM Police Officers</b> <b>**8:15AM Harriet Oxler<sup>†</sup></b>
Thur: 12/5	<b>6:15AM Rosemary Schoenen<sup>†</sup></b> 8:15AM Dave Kenabel <sup>†</sup>
Fri: 12/6	<b>6:15AM Hoi Ha Nguyen<sup>†</sup></b> 8:15AM Pat, Andy & LaVonne Klein <sup>†</sup>
Sat: 12/7	<b>8:15AM Gus &amp; Frances Huber<sup>†</sup></b> 4:00PM Jack & Mary Looney <sup>†</sup>
Sun: 12/8	<b>7:30AM Paul Ayer<sup>†</sup></b> 9:00AM Andy Huffman <sup>†</sup> <b>11:00AM Our Parishioners</b>

<sup>†</sup> Deceased

**\*\*School Mass**

**To request a Mass intention, stop by the parish office or call 816-942-2492. Suggested donation per Mass is \$10.**

### SCRIPTURE READINGS

For the daily readings, visit [usccb.org/bible/reading](http://usccb.org/bible/reading). Have the readings sent to your email each day, hear the readings read to you, or watch a video with a reflection based on the readings.



**TJ BRENNAN** - *Parishioner*  
 816.394.2224  
 • HOME • AUTO • BUSINESS • LIFE  
 tjbrennan@cekinsurance.com  
 www.cekinsurance.com

WE APPRECIATE OUR  
 ADVERTISERS!

The Genuine. The Original.



Overhead Door Company of Kansas City™  
 A **SPACE** Company



SERVING KANSAS CITY *SINCE 1927*

REPAIR + REPLACE GARAGE DOORS AND OPENERS  
 RESIDENTIAL DOORS

**FREE ESTIMATES • 816-320-5430**  
 OverheadDoorKansasCity.com

## LET'S GROW YOUR BUSINESS

Place Your Ad Here  
 and Support Our Parish!

**CONTACT ME**  
**Jon Becker**

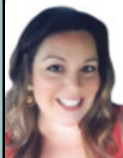
**jbecker@4LPi.com**  
**(800) 950-9952 x2536**

## SHORT STAFFED?

Place an ad here to find new  
 local talent for your business.



**CALL 800-477-4574**



**Shelly Balthazor**  
*Real Estate Specialist, Parishioner*  
 816-591-5277  
 shellyb@reecenichols.com



\*1 Real Estate Team in MO & KS  
 \*1 KC Real Estate Team in Homes Sold  
 \*1 in Sales Volume  
 \*3 Nationally Ranked Team in the US  
 \*740+ Million in Sales Volume in 2021

SUPPORT OUR  
 ADVERTISERS!



**STATE FARM®**  
**INSURANCE AGENT**

**Julie Stoll**

ChFC®, CPCU®, CLU®



For ad info. call 1-800-950-9952 • [www.4lpi.com](http://www.4lpi.com)

St. Thomas More, Kansas City, MO

C 4C 02-0710



A Fresh and Polished Approach to Oral Health

4851 WEST 134TH STREET • LEAWOOD • KANSAS 66209-7803  
913.681.8300 • WWW.JEFFTHOMPSONORTHO.COM

JEFFREY J. THOMPSON, D.D.S., M.S.  
DIPLOMATE AMERICAN BOARD OF ORTHODONTICS

catholicmatch®  
Missouri



CatholicMatch.com/MO



**WALK-IN CLINIC**  
for sports injury or fractures

M-F: 9am -11am, 1pm - 3pm. Ages 0 -16

**Pediatric Orthopaedic  
Surgery Associates**

5250 W. 94th Terrace, Prairie Village, KS 66207

**913-451-0000**

www.pedorthokc.com

Like a good neighbor **State Farm**  
State Farm is there.®



13012 Fuller  
P.O. Box 230  
Grandview, MO 64030

STATE FARM INSURANCE COMPANIES  
HOME OFFICES BLOOMINGTON, ILLINOIS

**Larry B. Langford,**  
CLU CHFC

Bus.: 816-761-8711  
Res.: 816 217 8112

larry.langford.b5u9@statefarm.com



**RE/MAX**®

State Line Real Estate



Direct Line: (913) 312-3630

Mobile: (816) 835-3230

TinaGaughan@gmail.com

TinaGaughan.com

11251 Nall Ave. • Leawood, KS 66211

**Tina R. Gaughan**  
REALTOR®, SRES

Each Office Independently Owned and Operated



**Transforming Homes  
Inside & Out  
Since 2001**

816-604-9873

www.odysseypainting.com  
odysseypainting21@gmail.com

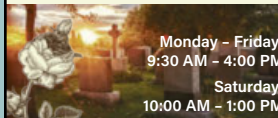
Exterior/Interior Painting • Deck/Fence Staining  
Siding/Window/Door/Garage Door Replacement



6842 Troost Ave  
Kansas City, MO 64131

816-333-0075

kcmonument1888@outlook.com



Monday - Friday:  
9:30 AM - 4:00 PM  
Saturday:  
10:00 AM - 1:00 PM

learn.  
grow.  
soar.

FORMING MEN AT  
**THE ROCK**  
ROCKHURST HIGH SCHOOL

WWW.ROCKHURSTHS.EDU/ADMISSIONS



**PILEGGI PAINTING**

Exterior - Interior - Decks - Residential & Commercial

Frank Pileggi - Owner

www.PileggiPainting.com

frank@pileggipainting.com | 913-558-5204

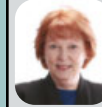
**Catholic Family  
CREDIT UNION**

Full Service For All Your Needs  
816-444-7440

9237 Ward Parkway, Ste 114

www.catholicfamilycu.com

Savings Insured by the NCUA up to \$250,000



Mary Owens Boesen  
Parishioner  
Life & Health Insurance Sales

**MEDICARE**

Let me help you! 30 years experience

816-942-0666 • mboesen@kc.rr.com

WE APPRECIATE OUR

WE APPRECIATE OUR  
ADVERTISERS!



**Brady Crawford**

Insurance & Financial Services

816.333.5853

coveredbycrawford.com

Locations in Waldo & Martin City



RENTERS HOMEOWNERS CONDO AUTO PET PERSONAL ARTICLES BUSINESS LIFE HEALTH

**IF YOU LIVE ALONE**

**MDMedAlert!**™ As Low As

✓ Ambulance ✓ Police/Fire **\$19<sup>95</sup>** /mo.

✓ Family/Friends ✓ GPS & Fall Alert

**CALL NOW 800.808.9294** #md-medalert.com



**CottageCare**

HOUSE CLEANING AT ITS BEST!

For Pricing call (913) 469-0220  
or visit cottagecare.com



**JD & Jakes**  
THE BARBER SHOP

(816) 569.2887 (cuts)

13033 Holmes Rd.



**SANDTRAP**  
Bar & Grill

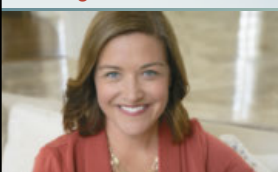
(816) 942-0990 | 13037 Holmes Rd.



**URGENT CARE**  
AT HOME

In home evaluations and  
treatments helps you skip the  
wait and get the care you need,  
when and where you need it.

Meghan Macy  
FNP-BC, APRN, NE  
(816) 223-7638  
www.urgentcareathomekc.com

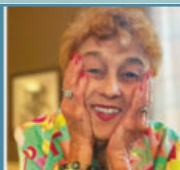


**The Madison**  
SENIOR LIVING



Learn more about life  
at The Madison!

Schedule a Tour | (816) 327-1726



For ad info. call 1-800-950-9952 • www.4lp.com

St. Thomas More, Kansas City, MO

B 4C 02-0710



Buy one Breakfast, Lunch or Dinner Combo meal  
and get one of equal or lesser value **FREE**

Limit one coupon per customer per visit. Please present coupon when ordering.  
Not valid with any other offer. Expires April 30, 2025  
Code 0710

24 Highway McDonald's  
11700 East US Highway 24  
Independence, MO

Eastland McDonald's  
18910 East US Highway 40  
Independence, MO

Susuehanna McDonald's  
16235 East US Highway 24  
Independence, MO

BR Crossing McDonald's  
11801 East US Highway 40  
Independence, MO

40 Highway McDonald's  
920 SW US Highway 40  
Blue Springs, MO

North 7 McDonald's  
814 NW State Route 7  
Blue Springs, MO

REDEEMABLE ONLY AT:  
Woods Chapel McDonald's  
1515 NW Woods Chapel Rd  
Blue Springs, MO

South 7 McDonald's  
3116 South 7 Highway  
Blue Springs, MO

Chouteau McDonald's  
4400 N Chouteau Traffic Way  
Kansas City, MO

Broadway McDonald's  
3741 Broadway Boulevard  
Kansas City, MO

Red Bridge McDonald's  
11001 Hickman Mills Drive  
Kansas City, MO

Blue Ridge McDonald's  
5260 Blue Ridge Boulevard  
Raytown, MO

Carpets | Area Rugs | Upholstery  
Hardwood Floors | Air Ducts  
Tile & Grout | Residential/Commercial

**WE CLEAN GREEN!** zerorez  
the right way to clean

(816) 425-3655  
www.zerorezkc.com Steven Phelps

**Better Homes and Gardens REAL ESTATE** KANSAS CITY HOMES

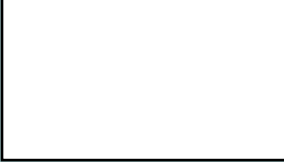
Judy Sheaman, ABR  
Sales Executive with 26 Yrs. Experience  
Parishioner  
Licensed in Kansas & Missouri

Office: 913-981-2827  
Cell: 816-304-2888  
KC Magazine  
"Five Star Real Estate Agent"  
for overall customer satisfaction since 2005

**Owen LUMBER CO.**  
KC's Leading Decking & Andersen Window Supplier  
Mike McGlinn Parishioner  
816-331-2211 OwenLumber.com

**ALLIED CONCRETE PRODUCTS**  
12800 2nd St. Grandview  
816-966-8836  
Judy, Pete, & Amparo Furey Parishioners

**RESIDENTIAL SEWAGE TREATMENT COMPANY, INC.**  
12800 2nd St. Grandview  
816-966-8885  
Kathy Maguire & Tom Fritts Parishioners



**LET'S GROW YOUR BUSINESS**  
Place Your Ad Here and Support Our Parish!

**CONTACT ME Jon Becker**  
jbecker@4LPi.com • (800) 950-9952 x2536

**MCGILLEY MEMORIAL CHAPELS SINCE 1899** Funerals | Cremations | Receptions | Celebrations  
"Celebrating Lives"  
Patrick McGilley | Joe Haster | 816-942-6180 | www.mcgilleystatelinechapel.com

Place Your Ad Here and Support our Parish!  
Instantly create and purchase an ad with

**AD CREATOR STUDIO**

4lpi.com/adcreator

*Muehlebach Funeral Care & Cremation Services*

**MUEHLEBACH FUNERAL CARE**

816-444-2060  
www.muehlebachchapel.com  
"Our Family Dedicated to Serving Yours."

Parishioners:  
Steve & Nicole Pierce  
Jordan Pierce STM Class of 2011  
Jenny Mertes  
Tom Reagan

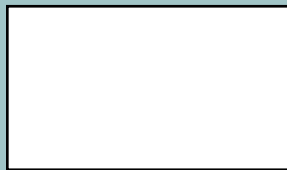
**LINC** Local Investment Commission  
Part-time Child Care Jobs  
**Now Hiring!**  
Apply at: [kdinc.org/parttimejobs](http://kdinc.org/parttimejobs)  
LINC Caring Communities Sites  
North Kansas City - Kansas City Public Schools  
Center - Hickman Mills - Grandview

**MALACHY CONNOR DESIGN & LANDSCAPE**

Landscape Design & Installation  
Let me design your dream landscape now!  
Book now  
913-515-4166  
MALACHY@CONNORLANDSCAPING.COM

ACCESS YOUR POTENTIAL

**AVILA UNIVERSITY**  
Avila.edu/catholic



WE APPRECIATE OUR ADVERTISERS!

John Sweeney CCIM  
**Reece Commercial**  
Commercial Real Estate  
(913) 945-3718 (913) 461-6326 mobile  
John@ReeceCommercial.com  
Brokerage Investment Development Consulting

We are an Independent Agency With Over 30 Years of Experience

- Auto
- Home
- Life
- Commercial

Your financial partner throughout your life.

**Matthew Pomianek, AAMS\***, Financial Advisor, Parishioner  
5000 W 95th St Ste 103  
Prairie Village, KS 66207  
913-648-6084  
matthew.pomianek@edwardjones.com

Member SIPC  
**Edward Jones**  
MAKING SENSE OF INVESTING

**BLIND BOX BBQ**  
PARISHIONER OWNED  
JOE & MAGGIE TULIPANA

**SHAWNEE**  
13214 W 62ND TERR, SHAWNEE, KS 66216

**VILLAGE WEST (INSIDE NEBRASKA FURNITURE MART)**  
1601 VILLAGE WEST PKWY, KANSAS CITY, KS 66111

**WE CATER!** 913.268.488Q  
catering@blindboxbbq.com

**BLIND BOX BBQ**  
BLINDBOXBBQ.COM

BURIAL • ENTOMBMENT • CREMATION • TRADITIONAL CEREMONIES • CELEBRATIONS OF LIFE

**CULLEN FUNERAL HOME, INC.**

612 W Foxwood Dr  
Raymore, MO 64083  
(816) 322-5278

PLAN AHEAD  
WE'LL TAKE THE FIRST STEP WITH YOU.

**NESTEL INSURANCE AGENCY**  
Mary Nestel  
816-361-6442  
9233 Ward Parkway Ste 124  
Kansas City, MO 64114  
www.nestelinsurance.com  
info@nestelinsurance.com