



OUR **MISSION** IS TO PROVIDE A WELCOMING, INCLUSIVE, AND LOVING COMMUNITY BY PROCLAIMING AND LIVING GOD'S WORD THROUGH WORSHIP, EDUCATION, AND SOCIAL JUSTICE.

# SAINT THOMAS MORE PARISH

11822 Holmes Road, Kansas City, Missouri 64131 • [stmkc.com](http://stmkc.com)

December 15, 2024



## BULLETIN ONLINE

this and last week's at [stmkc.com](http://stmkc.com)  
Subscribe at [stmkc.com/emailme](http://stmkc.com/emailme) →



## MASSES

WEEKDAY (ADVENT) Mon—Fri 6:15am  
Mon—Sat 8:15am  
WEEKEND: Sat 4pm, Sun, 7:30am, 9am & 11am  
MASS ONLINE CONTINUES

## RECONCILIATION (ADVENT)

Individual Confessions: by appointment and Tuesdays and Thursdays, 5-6pm  
Saturdays, 7:15-8am, 3-3:45pm

## OUR CLERGY

Father Justin Hoye, Pastor  
Father Pius Wesonga, AJ, Associate Pastor  
In Residence: Father Paul Sappington

## AT THE PARISH OFFICE

Office Hours:  
Mon. & Wed. 8:45am-1pm, 2-3:30pm\*  
Tues. & Thurs. 8:45am-1pm, 2-5pm\*  
Friday 8:45am-1pm  
\* lunch hour 1-2pm

Parish Office 816-942-2492

Office directory at [stmkc.com](http://stmkc.com) and [p.9](http://p.9)

## AT THE SCHOOL OFFICE

Linda Crosthwait Principal  
Tracy Stewart Assistant Principal

Office hours: Mon.-Thurs., 8am-3:45pm;  
Fri., 8:30am-3:30pm

School Office 816-942-5581

School fax 816-941-2450

School email directory at [stmkcschool.org](http://stmkcschool.org)

SCHOOL TOURS: contact Principal Linda Crosthwait at 816-942-5581 or [crosthwait\\_linda@stmkcyclones.org](mailto:crosthwait_linda@stmkcyclones.org)

## SAFE ENVIRONMENT

All employees and volunteers working with minors are required to:

- Create an account at [virtus.org](http://virtus.org)
- Attend a Protecting God's Children workshop
- Complete a mandated reporter training
- Submit to a background check
- Read the online Policy on Ethics and Integrity in Ministry

For more Safe Environment information, including reporting and victim resources, see page 10.



## 3<sup>RD</sup> SUNDAY OF ADVENT

John answered them all, saying, "I am baptizing you with water, but one mightier than I is coming. I am not worthy to loosen the thongs of his sandals. He will baptize you with the Holy Spirit and fire." - Lk 3:16

Excerpts from the Lectionary for Mass ©2001, 1998, 1970 CCD.

©LPI



## Christmas at St. Thomas More

DECEMBER 24  
4pm and 6pm

DECEMBER 25  
Midnight and 9am



Faithful People of Saint Thomas More,

Thank you to those who participated in our two More Hall events last weekend - the Auction Committee's Pop-up Bar, and our 9th Annual Advent Morning of Reflection. Both were great opportunities to enjoy fellowship and help support one another.

The Church describes this season as one of "delightful anticipation." For many of us, this season can be privately painful. When we are surrounded with so much narrative about "gratitude" and "blessings" and "joy," it can exacerbate the tensions, frustrations and discord that we might actually be experiencing in our families and other relationships. This can leave us feeling ashamed or guilty that everyone else seems to be thriving, which only isolates us the more.

Next month, there are two ministry opportunities that can help us recalibrate with some TLC, if we find ourselves stuck and dispirited in how we see ourselves, or in how we are engaging with those closest to us:

**Retrouvaille**, pronounced ("retro-vi", with a strong "i") - This decades-long ministry with Catholic roots assists those experiencing the challenges of marriages. Many STM parishioners have taken advantage of this ministry, using it as either a refresh or a rescue to the challenges of married life. **The week-end of January 31st** offers the next Kansas City experience, which includes not simply the weekend, but follow-up small group opportunities for couples to continue to be nurtured. (See page 4 for more information and to sign up.)

**Living Waters** - Hundreds have gone through this ministry at STM over the last decade. This 20-week ministry uses teaching, witness talks, healing prayer and small group sharing/accountability, to help those who - due to the wounds of life - are no longer loving well, or receiving love well. Open to married and single, clergy and religious, the next offering at STM (Mondays, January through May) **begins January 6th**. (See page 8 for details.)

If you'd like to speak more with me about either of these offerings, or be connected with any of our

parishioners who have participated in these ministries, please let me know. (Brochures for both are also available in our confessional.) The Body of Christ continues to offer us pathways for healing and wholeness...we simply need the courage to take the first step to access them.

Our six-week small group Kerygma series concludes this week, and I want to thank the participants (and facilitators, who have been leading our six groups). I hope that many of those participants will consider a "next step" in their efforts to grow in their ownership of the Gospel message, by participating in the next offering...

**...Beginning the week of January 19th**, we will offer another six-week series, being offered concurrently at other parishes throughout the diocese. That is, Catholics throughout the diocese will be participating in this, at the same time we are. The Isaiah 49 series is designed to help individuals who have received the Gospel message (the "kerygma," which we have been covering in our current small groups) to then accompany others intentionally so as to present this saving, freeing message. We will have two weekly offerings of this experience, both held in More Hall. (See page 8 "Isaiah 49" for more information.)

And lastly...after three months, we are returning to the gym this weekend, with all restoration and repair efforts completed following our September 21st lightning strike. As I've mentioned before, STM's gym gets more use than any other gym in our diocesan system, so the pause was not simply disruptive for us, but for a whole lot of other schools and teams who frequent our campus. I am grateful for the work of Scott Dulle and Tim Waris on staff, who have been overseeing these efforts and have led us to a successful completion.

Father Justin



SAINT THOMAS MORE PARISH  
**Annual Stewardship**

**STM Annual Stewardship & Diocesan Annual Appeal**

**Commitment Weekend has passed.** If you have not returned your pledge form, please return it by the end of this calendar year so future contributions can be applied toward your pledge.

**If you have not received a packet,** contact Joan Sandford, joan@stmkc.com or 816-942-2492 x202. Or pledge online by using the QR code above or visiting stmkc.com and clicking on the Annual Stewardship box.

**THANK YOU** for all you do at and for Saint Thomas More. STM is an amazing parish because of you and your support!

**PLEDGE ONLINE**



STMKC.COM/PLEDGE

**Annual Stewardship Pledge Report**

**Goal: 100% Participation**

As of 12/9/24, 364 households returned pledge forms.

**Diocesan Annual Catholic Appeal (ACA)**

**Goal: 100% response rate**

As of 12/04/24 :

- 153 STM households pledged \$117,480 (104%)
- Across the diocese 3,597 households pledged \$1,289,169 toward a \$2 million goal (6%).

*One Family* RESTORED IN CHRIST, EQUIPPED FOR MISSION



**Healing Our Family**

*Tending wounds and accompanying hearts to freedom in Christ*

**Come Home to Communion**



**Daily Masses for Advent**

Monday through Friday  
 6:15 & 8:15am  
 Saturday, 8:15am

**Weekend Masses:**

Saturday Vigil, 4pm  
 Sunday, 7:30am, 9am & 11am

**Sign Interpreted services:** 2nd Sundays at 11am

**Masses are recorded daily;** find them at stmkc.com or youtube.stmkc.com.

**Church Hours for Private Prayer**

Monday - Friday, 6am-9pm  
 Saturday - Sunday, 7am-9pm

**December Prayer Intentions**

**Pope Francis:** Let us pray that the coming Church Jubilee Year 2025 strengthens us in our faith, helping us to recognize the Risen Christ in the midst of our lives, transforming us into pilgrims of Christian hope.

**Bishop Johnston:** Let us pray for those working to overcome addiction in any form; that the grace and love of Christ will bring them encouragement and strength and fill them with hope.

**Please hold in prayer**

CONTACT THE PARISH OFFICE, BULLETIN@STMKC.COM OR 942-2492 X202, TO ADD OR REMOVE NAMES FROM THE PRAYER LIST. IF YOUR NAME IS DROPPED OFF AND YOU ARE IN NEED OF ADDITIONAL PRAYERS FOR HEALING, CONTACT THE PARISH OFFICE. **NAMES APPEAR EVERY OTHER WEEK.**

**...our family and friends in the military:**

|                |               |             |              |                  |
|----------------|---------------|-------------|--------------|------------------|
| Thomas Edwards | John Hylander | Sarah Katz  | Alycia Pouch | John P. Sullivan |
| Seth Gulsby    | Steve Janner  | Brian Owara | Nathan Pouch |                  |

**...our parishioners who are sick:**

|                 |                  |              |              |                 |
|-----------------|------------------|--------------|--------------|-----------------|
| Patrick Adams   | Bill Cusick      | Iva Hamilton | Kathy Lawson | Kathy Vervaecke |
| Roberta Aguirre | Beth Dierks      | Lola Jacobs  | Laura Rupp   | Anita Wagner    |
| David Belzer    | Carol Gretencord | Carol Katzer | Ed Thomas    |                 |

**...our family and friends who are sick:**

|                       |                |                       |                |               |
|-----------------------|----------------|-----------------------|----------------|---------------|
| Duane & Melinda Brown | Joy Davie      | Jerry Job             | Brian Robinson | Glnny Torchia |
| Alissa Carter         | Charles Haster | Julie Aguirre Johnson | Missy Seaman   | Lester Wells  |
| Rachel Casady         | Glen Horton    | Richard Layton        |                |               |

**...our family and friends who have died:**

Chuck Kraft; Mary Elizabeth Heiman

## Advent Confession Times in Our Deanery

### Mondays

7-7:30AM (Christ the King)  
7:30-7:50AM (Coronation)  
11-11:50AM (Christ the King)

### Tuesdays

6:30-6:50AM (Coronation)  
7-7:30AM (Christ the King)  
11-11:50AM (Christ the King)  
**5-6PM (St. Thomas More)**  
5:15-6:15PM (St. Peter)

### Wednesdays

7-7:30AM (Christ the King)  
11-11:50AM (Christ the King)  
5:30-5:50PM (Coronation)  
6-7PM (St. Regis)

### Thursdays

6:30-6:50AM (Coronation)  
7-7:30AM (Christ the King)  
11-11:50AM (Christ the King)  
**5-6PM (St. Thomas More)**  
**\*Not Dec. 19 at STM**

### Fridays

7-7:30AM (Christ the King)  
7:30-7:50AM (Coronation)  
11-11:50AM (Christ the King)

### Saturdays

**7:15-8AM (St. Thomas More)**  
7:30-7:50AM (Coronation)  
2-2:45M (St. Regis)  
3-3:30PM (St. Sabina)  
**3-3:45PM (St. Thomas More)**  
3-3:50PM (Coronation)  
3-3:50PM (Christ the King)  
3:30-4:15PM (St. Elizabeth)  
4:15-4:45 (St. Peter)  
4:15-4:50PM (Holy Martyrs)

### Sundays

9-9:50AM (Coronation)  
9-9:50AM (Holy Martyrs)  
6:30-7:30PM (Christ the King)

## Pray the Rosary with Others

### Sundays, after 9am Mass

Join with the Knights of Columbus in prayer.

### Mon.-Fri., after the 8:15am Mass

All are welcome to pray the rosary or the Fatima devotions with others on first Saturdays, after 8:15am Mass.

## Eucharistic Exposition at STM

### Sundays, Noon-9pm in the Church

Regular time spent with the Lord in Adoration can be life changing! First Sundays, Noon-1pm, has music.

**Stay practical.** It might not be possible for you to get to your church whenever you feel like it. But maybe you can arrive early for Mass and spend time with Jesus. Or perhaps you could arrange your schedule so that you (and even a spouse, child, or friend with you) can stop in as you're driving past the church. Even a few minutes can change your week for the better.

## Care & Support

### Grief Peer Support Group

#### For Advent: Wed. (Dec. 18), 4-5pm, in the Chapel

The group is meeting weekly during Advent. Grief is difficult and can be experienced as a result of any kind of loss. As we support each other, we also use various resources to better understand our grief. Questions? Contact Pastoral Associate, at [Peggy@stmkc.com](mailto:Peggy@stmkc.com) or 816-942-2492 x210.

### Care Notes in the Narthex

Care Notes are found on the north side of the narthex and the current themes are for Advent. A couple of titles are: "Coping with Holiday Stress" and "Going on an Advent Prayer Journey." Feel free to take a Care Note that will help you find a faith connection with Advent.

### Retrouvaille Weekend for Couples

#### January 27-29, 2023, Kansas City

Not willing to let go of your marriage? Many couples continue to struggle in a marriage, but are not willing to give up on each other. There is hope.

Retrouvaille is a program designed to help struggling marriages regain their health. It helps a husband and a wife rediscover or re-awaken the love, trust and commitment that originally brought them together. The program is highly successful in saving hurting marriages, even bringing reconciliation to couples who have already separated or divorced. It is a peer ministry of volunteer couples that can help you learn the tools of healthy communication, build intimacy and heal, just as they have done in their own marriages.

For more information, visit [helpourmarriage.com](http://helpourmarriage.com) or call 800-470-2230.



### International Migrants Day

#### Wednesday, December 18

International Migrants Day is observed every Decem-

ber 18. Migrants are often forced to migrate and face stigma and limited access to services as they are displaced and also often face poor work conditions with high risk of insecurity and layoffs.

VIA Immigration & Refugee Ministry ministers to migrants in our area and assists with many of their common needs, such as legal aid, document assistance, and connection with parishes. Contact Raiza Guevara, 816-756-1850 x521 or guevara@diocesekcsj.org, for more information.

### Christmas Day Collection - December 25

As every Christmas at STM, there is a special envelope. Each year, people pledge in good faith to contribute a tithe to STM. At the end of the year, some find themselves with extra blessings while others hit rough times and find themselves short of their pledge. This envelope is especially for those in abundance, to help STM's bottom line budget on behalf of those who are struggling. Thank you for any contribution in these envelopes; it will be used wisely.

### November Financials

|                           |                     |
|---------------------------|---------------------|
| Regular - \$248,108.34    | Plate - \$3,915.12  |
| Facilities - \$1,050.00   |                     |
| Education Fund - \$345.00 | School - \$2,170.00 |
| All Saints - \$1,130.00   |                     |

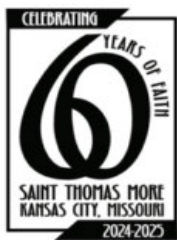
**Thank you** for your continued contributions to STM!

### Please help STM credit your contribution to YOU!

Did you know that some bank and stock contributions arrive at STM with no name attached? Before you make a stock contribution, please contact Tim Waris (816-942-2492 x218 or tim@stmkc.com) or visit stmkc.com. (Click on Stewardship and Alternative Giving to find the stock donation form.) If you contribute by having a bank send STM a check, please instruct your bank to include your name on the check. Thank you!

### ...and help STM honor your intention!

When you contribute, particularly at this time of year, please be sure to note the **year** for which you are giving and the **purpose** of your contribution (tithe, HVAC, etc.) As always, THANK YOU for your contributions!



### Looking for a gift?

Trying to find the right gift for that hard-to-buy-for person? Have you considered the STM 60th anniversary shop? Check it out at stmkc.com. The site has apparel as well as other items.



### Children's Liturgy of the Word

**Sunday, December 15, at 9am Mass**

Children through 2nd grade are invited to participate in Children's Liturgy of the Word. Questions? Contact Joan Sandford, joan@stmkc.com or 816-942-2492 x202.

### G.I.F.T. Growing in Faith Together

**Tuesdays, 9-10:30am, Bauman Room of More Hall**

Women gather each week to break open the Sunday readings. All are welcome to join in! Questions? Email Becky at bturner727@yahoo.com.

### Considering becoming Catholic?

**Inquiry: Tuesdays, 6:15-7:30pm, More Hall A**

**Dec. 17: *The Four Last Things***

Sessions are for those from other Christian traditions or those with no religious background. Journey with other individuals to learn more about the Catholic Church and to discern God's invitations offered through the Catholic Church. Sessions are open to adults and children, baptized and not. They are also open to Catholics who would like to take advantage of this formation opportunity. Questions? Contact Father Justin, 816-942-2492 x204 or frjhoye@stmkc.com.

### 48th Annual Senior Citizens' Christmas Day Dinner

**Wednesday, December 25, Noon-2pm**

KCMO officer Richard White invites all seniors (60+) unable to be with family or friends on Christmas Day to enjoy dinner at Saint Peter's Elementary School, 6400 Charlotte, KCMO. Please call or text 816-572-2646 by Friday, Dec. 20. Homebound delivery is also available.

### School of Religion (SOR)

**Wednesdays, 6:15-7:30pm, More Hall A**

School of Religion provides catechesis for grade school children, grades 1-8, who do not attend Catholic school. Visit stmkc.com to register online. Click on the "School of Religion" box. Questions? Email Susan at aquiel2000@yahoo.com.

### SPRED Class

**Monday, January 13, 6:30-8:30pm, More Hall**

An adult group for the developmentally delayed meets about every other week to share their faith. Questions? Email Becky at bturner727@yahoo.com.

# To Commemorate Saint Thomas More's 60th Anniversary

*The Faith in Action Team  
invites every parishioner  
to engage in*

## 60 ACTS OF KINDNESS

*Each month, between  
October 2024 and June  
2025, we will feature  
suggested small acts of  
kindness for you and your  
family to try,*



- ⑥ Shovel snow on your sidewalk in your neighborhood
- ⑥ Say hello to someone you don't know at a holiday party
- ⑥ Give a gift card or cash to someone who could use it for Christmas shopping
- ⑥ Buy a meal or a drink for the next person in the fast-food pickup line
- ⑥ Give an extra big tip during the holiday season
- ⑥ Be a Secret Santa to someone and leave them a small gift.
- ⑥ Donate snacks to the Hospice House workers
- ⑥ Mail a Christmas card to someone special.
- ⑥ Bake Christmas cookies for a neighbor.
- ⑥ Leave a packaged snack near your mailbox for the mail carrier.







# Sunday Q&A

Your Faith in Focus

Third Sunday of Advent, Year C

## TO FORM A MORE JUST SOCIETY

### As Catholics, what is our duty toward the poor?

It can be difficult to understand Catholic social teaching, maybe because it sounds too political, philosophical, or even foreign to the realm of religion. Here, Colin and Aimee MacIver offer an easy-to-understand rundown on its simple and essential concepts.

#### The Principles

The preferential option for the poor is a key principle in Catholic social teaching. It means we are obliged to care for the poor, help them meet their basic needs, and work toward a more materially just society. Anyone who seeks to be a true disciple of Jesus must have an active, vested concern for the poor, vulnerable, and oppressed. But the Faith is not an ideology or a political platform; it does not require us to belong to a specific political party or advocate a specific policy to alleviate poverty. Rather, the Church calls all to work toward a common goal: for every human person to thrive. We need ideas, voices, experiences, initiatives, and innovations to accomplish this work.

#### It Is Important

The basis for this preferential option is intensely practical because every human being has inherent dignity. It is also deeply spiritual because Jesus has revealed that we find him in the distressing disguise of the poor. How we respond to the poor is the measure of how we respond to Jesus himself. In Matthew 25, Jesus makes it clear that our response to the poor can mean the difference between heaven and hell.

#### It Is an Encounter

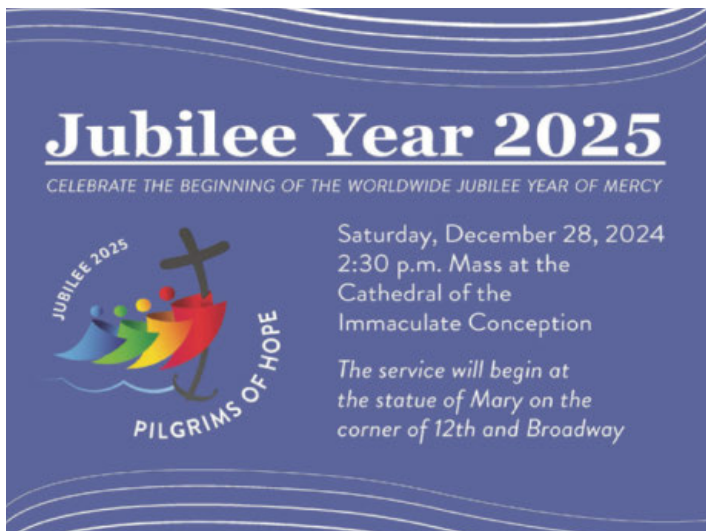
Poverty has many causes and takes many forms. Some are born into circumstances where opportunities and resources are scarce. Some are poor due to things like job loss, a death in the family, an injury, an illness, or mental or physical challenges that affect a person's ability to work. Some make choices that leave them struggling for basic needs. But Jesus doesn't qualify his teaching or place conditions on our duty to help. Our Lord reached out not only to the blind, deaf, lame, and lepers, but also to prostitutes, public sinners, criminals, and tax collectors. Jesus is present in all of them.

---

*“Truly, I say to you, as you did it to one of the least of these my brethren, you did it to me.”*

—Matthew 25:40

---



### Christmas Book

This year's book, *The Three Ordinary Voices of God* by Matthew Kelly, will be available at the doors of the church for Christmas. The write up about the book is:

*In this simple and powerful guide, Matthew Kelly demonstrates that God speaks to everyone—whether we are aware of it or not—through three ordinary voices: OUR NEEDS, OUR TALENTS, and OUR DESIRES.*

Thanks to the Men of STM for purchasing the books!

### Isaiah 49 - Do you want to help renew the parish?

If you have a heart for mission and a desire to see our parish grow into a community of missionary disciples, join us for a 6-week series that will help you do just that! STM will be hosting a 6-week series on Isaiah 49 that will equip you to share your faith with others and help our parish community grow in fruitfulness!

We will meet once a week, beginning in mid-January. Topics to be discussed are:

- Understanding the Lost – Knowing who you are seeking to reach.
- Mobilizing the 1% – All you need is a few missionary disciples at the beginning.
- A System for Intentional Accompaniment – No one does anything alone.
- The Indispensable Action of the Holy Spirit – Engaging with the principal agent of evangelization.
- Skills for Intentional Accompaniment – Leading people towards conversion.

Please contact Hayley, our STM Evangelization & Discipleship Coordinator, at [hayley@stmkc.com](mailto:hayley@stmkc.com) to sign up.

### Living Waters at Saint Thomas More

#### Mondays (January 6-May 5), 7pm

How does Jesus transform our brokenness into a gift to His Church? We can begin by applying His mercy to the ways we fail to love well: our sexual sin, sins against us,

giving too much, or withholding ourselves altogether. We will seek wholeness through honest admission of our brokenness. This confidential, in-depth prayer/healing group is for men and women, marrieds and singles. Email Katie at [kcomiskey@desertstream.org](mailto:kcomiskey@desertstream.org) for more info or to apply.

## Parish Calendar of Events

- Sun., Dec. 15 - Children's Liturgy of the Word, 9am Mass
- Mon., Dec. 16 - Children's Choir Rehearsal, 3:20-4:15pm  
Kerygma Study, 4-5pm, Bauman Library
- Tue., Dec. 17 - G.I.F.T., 9-10:30am, Bauman Library  
Kerygma Study, 2-3pm, Bauman Library  
OCIA, 6:15-7:30pm, More Hall A  
Kerygma Study, 6:30-7:30pm, Bauman Library
- Wed., Dec. 18 - Kerygma Study, 10-11am, Bauman  
Grief Peer Support, 4-5pm, Bauman Room  
School of Religion, 6:15-7:30pm, More Hall A
- Thu., Dec. 19 - Kerygma Study, 10-11am, Bauman  
Seminar Mass/Dinner, 5:30pm, Church/More Hall  
School of Religion First Reconciliation, 7pm, Church

## Bulletin Deadline Changes

| Bulletin    | Due Date                |
|-------------|-------------------------|
| December 29 | Wednesday, Dec. 18, 9am |
| January 5   | Friday, Dec. 20, 9am    |

### Parish Office Hours (December 23-January 1)

- Mon., Dec. 23 - Open 8:45am-3:30pm
- Tue., Dec. 24 - Closed
- Wed., Dec. 25 - Closed
- Thu., Dec. 26 - Open 9:30am-5pm
- Fri., Dec. 27 - Open 9:30am-1pm
- Mon., Dec. 30 - Open 9:30am-3:30pm
- Tue., Dec. 31 - Open 9:30am-1pm
- Wed., Jan. 1 - Closed
- Thu., Jan. 2 - Return to regular office hours

## STM School

Linda Crosthwait, Principal

816-942-5581 [STMKC.COM/SCHOOL](http://stmkc.com/school)

### School Dates

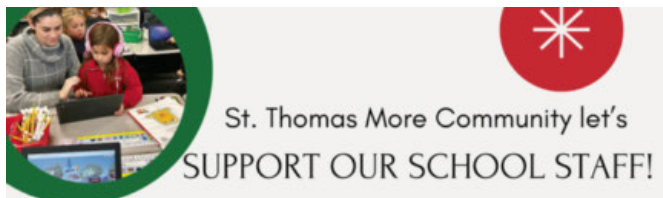
- Mon., Dec. 16 - Advent Prayer Services, 8:15am & 2:40pm
- Fri., Dec. 20 - 12:30pm Dismissal  
4th Grade Activity, 12:30pm, More Hall
- Tue., Jan. 7 - STM School resumes



## Hey, STM community!

Do you own a small business?! Our auction relies on donations from families, parishioners, and businesses in the surrounding community! We are still looking for items for our live and silent auctions, if you have any items, leads, or ideas please reach out to us! Below are a few ideas. No gift is too big or too small! What would you bid on?

**Suggestions** include vacation homes, video games, dining experiences, services, electronics, kid items, airline miles, artwork, private transportation, adult experiences, sporting event tickets, barware, concert tickets, bottles of liquor/wine, venue rentals. Contact Jaqui, jacobson.jaqui@gmail.com, with questions or to donate. We appreciate you!



## School Staff Bonuses

STM Community, please consider donating to our school staff bonuses this year. Donating is a meaningful way to support and recognize the hard work of our educators and the impact they have on our STM students. Every little bit counts. Donate through our auction website [stmauction.org](http://stmauction.org) and click on Teacher Bonus Fund. Or via Venmo @SaintThomasMoreSchool, memo: Staff Bonus or with cash/check at the parish office. Thank you for supporting our school staff!

## Book Now Available!



After years of encouragement from friends, Jerry Anselmo's book, *When the Doorbell Rang*, is for sale and generating rave reviews. This memoir not only opens a window into Jerry's life and childhood in St. Louis but also tells the moving story of how he turned the loss of his beloved son, Brian, into a powerful mission through the BMA

Foundation. Jerry and Mary Ellen are long-time members of the parish and their foundation helps fund STM-for-All at our school. All proceeds go to the BMA Foundation, which in turn, helps our school. You can reserve your book at [bmafoundation.org](http://bmafoundation.org) and look for SHOP.

## Parish Office Staff

|   |  |   |  |
|---|--|---|--|
|  | Sharon Arnett<br>Liturgy Coordinator<br>x208 <a href="mailto:sharon@stmkc.com">sharon@stmkc.com</a>                        |  | Bob Sandford<br>Publications & Music Director<br>x212 <a href="mailto:bob@stmkc.com">bob@stmkc.com</a>                   |
|  | Mary Begnaud<br>Receptionist<br>x201 <a href="mailto:mary@stmkc.com">mary@stmkc.com</a>                                    |  | Joan Sandford<br>Office Manager<br>x202 <a href="mailto:joan@stmkc.com">joan@stmkc.com</a>                               |
|  | Scott Dulle<br>Building & Grounds Director<br><a href="mailto:dulle_scott@stmcyclones.org">dulle_scott@stmcyclones.org</a> |  | Father Paul Sappington<br>In Residence<br><a href="mailto:frsappington@smacatholic.org">frsappington@smacatholic.org</a> |
|  | Father Justin Hoyer<br>Pastor<br>x204 <a href="mailto:frjhoye@stmkc.com">frjhoye@stmkc.com</a>                             |  | Hayley Shaver<br>Evangelization & Discipleship<br>x223 <a href="mailto:hayley@stmkc.com">hayley@stmkc.com</a>            |
|  | Becky Johnson<br>Finance Coordinator<br>x224 <a href="mailto:becky@stmkc.com">becky@stmkc.com</a>                          |  | Tim Waris<br>Business Manager<br>x218 <a href="mailto:tim@stmkc.com">tim@stmkc.com</a>                                   |
|  | Judy Kashka<br>Funeral & Wedding Liturgist<br><a href="mailto:judy@stmkc.com">judy@stmkc.com</a>                           |  | Father Pius Wesonga, AJ<br>Associate Pastor<br>x203 <a href="mailto:frpwesonga@stmkc.com">frpwesonga@stmkc.com</a>       |
|  | Peggy Lucas<br>Pastoral Associate/Outreach<br>x210 <a href="mailto:peggy@stmkc.com">peggy@stmkc.com</a>                    |   |  |

## Parish Office Hours (until further notice)

Office Hours: M-W 8:45am-3:30pm; T-Th 8:45am-5pm  
F 8:45am-1pm

## Finance Ministry Team

Justin Hicks, Chair  
Mark Meierhoffer  
Bruce Gregg  
Stefanie Bresette  
Laura Christopherson  
*Parishioner volunteers serve for three-year terms.*  
Questions? Email [FinanceCouncil@stmkc.com](mailto:FinanceCouncil@stmkc.com).

**Diocesan Ombudsman**  
Joe Crayon [crayon@ombudsmankcsj.org](mailto:crayon@ombudsmankcsj.org) or 816-812-2500

**Victim Advocate**  
816-392-0011 or [victimadvocate@diocesekcsj.org](mailto:victimadvocate@diocesekcsj.org)

## To register as a member of Saint Thomas More Parish...

...go to [stmkc.com/registration](http://stmkc.com/registration), contact the parish office or pick up a registration form on the Information table in the church narthex.

## Safe Environment Information

The Diocese of Kansas City~Saint Joseph is committed to combatting sexual abuse in the Church. If you are a victim of sexual abuse, or if you *observe or suspect* sexual abuse:

- Call the **MO Child Abuse Hotline**, 1-800-392-3738 (if the victim is currently under the age of 18), or **KS Protection Report Center**, 1-800-922-5330, and
- Contact your **local law enforcement agency** or call 911, and
- After reporting to these civil and law enforcement authorities, report suspected sexual abuse of a minor or vulnerable adult to the Diocesan Ombudsman, Joe Crayon, at [crayon@ombudsmankcsj.org](mailto:crayon@ombudsmankcsj.org) or 816-812-2500 if the abuse involves a priest, deacon, employee or volunteer of the Diocese of Kansas City-St. Joseph.

The diocese has a sincere commitment to providing care and healing resources to victims of sexual abuse and their families. Please contact the Victim Advocate at 816-392-0011 or [victimadvocate@diocesekcsj.org](mailto:victimadvocate@diocesekcsj.org).

**FOR ADDITIONAL INFORMATION**, contact:  
**Joan Sandford**, Parish Safe Environment Coordinator, [safety@stmkc.com](mailto:safety@stmkc.com) or 816-942-2492 x202, OR  
**Tracy Stewart**, School Safe Environment Coordinator, [stewart\\_tracy@stmcyclones.org](mailto:stewart_tracy@stmcyclones.org) or 816-942-5581.

## Mass Intentions

- Mon: **6:15AM Martha Ziegler<sup>†</sup>**  
 12/16 8:15AM Bill Waris<sup>†</sup>
- Tues: **6:15AM Doctors**  
 12/17 8:15AM Bill Brady<sup>†</sup>
- Wed: **6:15AM Medical Technicians**  
 12/18 **\*\*8:15AM Duane Spense<sup>†</sup>**
- Thur: **6:15AM Pat & Jane Keller<sup>†</sup>**  
 12/19 8:15AM Carl & Linda Fiorella<sup>†</sup>
- Fri: **6:15AM John & Annette Lofthouse<sup>†</sup>**  
 12/20 8:15AM Mary Edith Burns<sup>†</sup>
- Sat: **8:15AM John Altergott<sup>†</sup>**  
 12/21 4:00PM Mark Ayers<sup>†</sup>
- Sun: **7:30AM Ann Appleyard**  
 12/22 9:00AM Gregory Larm<sup>†</sup>  
**11:00AM Our Parishioners**

<sup>†</sup> Deceased                      **\*\*** School Mass

*To request a Mass intention, stop by the parish office or call 816-942-2492. Suggested donation per Mass is \$10.*

### SCRIPTURE READINGS

For the daily readings, visit [usccb.org/bible/reading](http://usccb.org/bible/reading). Have the readings sent to your email each day, hear the readings read to you, or watch a video with a reflection based on the readings.

|   |  |   |
|---|--|---|
|  <p><b>TJ BRENNAN</b> - Parishioner<br/>816.394.2224</p> <p>• HOME • AUTO • BUSINESS • LIFE<br/> <a href="mailto:tjbrennan@cekinsurance.com">tjbrennan@cekinsurance.com</a><br/> <a href="http://www.cekinsurance.com">www.cekinsurance.com</a></p>   | <p>WE APPRECIATE OUR ADVERTISERS!</p>  | <p>The Genuine. The Original.</p>  <p>Overhead Door Company of Kansas City™<br/>A SPACER Company</p>   |
|  <p><b>BALTHAZOR HOMES</b><br/>shellyb.reecenichols.com</p> <p><b>Shelly Balthazor</b><br/>Real Estate Specialist, Parishioner<br/>816-591-5277<br/><a href="mailto:shellyb@reecenichols.com">shellyb@reecenichols.com</a></p> <p><b>THE ROBERT ELLERMAN REECE NICHOLS TEAM</b></p> <p><sup>1</sup> Real Estate Team in MO &amp; KS<br/> <sup>1</sup> KC Real Estate Team in Homes Sold<br/> <sup>1</sup> in Sales Volume<br/> <sup>3</sup> Nationally Ranked Team in the US<br/> <sup>7</sup>40+ Million in Sales Volume in 2021</p> |  |   |
|  <p><b>Brady Crawford</b><br/>Insurance &amp; Financial Services</p> <p>816.333.5853<br/> <a href="http://coveredbycrawford.com">coveredbycrawford.com</a><br/>         Locations in Waldo &amp; Martin City</p> <p>RENTERS HOMEOWNERS CONDO AUTO PET PERSONAL ARTICLES BUSINESS LIFE HEALTH</p>   | <p><b>SHORT STAFFED?</b><br/>Place an ad here to find new local talent for your business.</p>  <p>CALL 800-477-4574</p> | <p><b>SERVING KANSAS CITY SINCE 1927</b></p> <p>REPAIR + REPLACE GARAGE DOORS AND OPENERS<br/>RESIDENTIAL DOORS</p> <p><b>FREE ESTIMATES • 816-320-5430</b><br/> <a href="http://OverheadDoorKansasCity.com">OverheadDoorKansasCity.com</a></p>                           |
| <p><b>IF YOU LIVE ALONE</b></p> <p><b>MDMedAlert!</b>™ As Low As <b>\$19<sup>95</sup></b> mo.</p> <p>✓ Ambulance ✓ Police/Fire<br/>         ✓ Family/Friends ✓ GPS &amp; Fall Alert</p> <p><b>CALL NOW! 800.808.9294</b> <a href="http://md-medalert.com">md-medalert.com</a></p>    |  |  <p><b>STATE FARM®</b><br/>INSURANCE AGENT</p> <p><b>Julie Stoll</b><br/>ChFC®, CPCU®, CLU®</p>  |





A Fresh and Polished Approach to Oral Health

4851 WEST 134TH STREET • LEAWOOD • KANSAS 66209-7803  
913.681.8300 • WWW.JEFFTHOMPSONORTHO.COM

JEFFREY J. THOMPSON, D.D.S., M.S.  
DIPLOMATE AMERICAN BOARD OF ORTHODONTICS

catholicmatch®  
Missouri



CatholicMatch.com/MO



**WALK-IN CLINIC**  
for sports injury or fractures

M-F: 9am -11am, 1pm - 3pm. Ages 0 -16

**pediatric orthopaedic  
surgery Associates**

5250 W. 94th Terrace, Prairie Village, KS 66207

**913-451-0000**

www.pedorthokc.com

Like a good neighbor StateFarm  
State Farm is there.®



13012 Fuller  
P.O. Box 230  
Grandview, MO 64030

STATE FARM INSURANCE COMPANIES  
HOME OFFICES BLOOMINGTON, ILLINOIS

**Larry B. Langford,**  
CLU CHFC

Bus.: 816-761-8711  
Res.: 816 217 8112

larry.langford.b5u9@statefarm.com



**RE/MAX**®

State Line Real Estate



**Tina R. Gaughan**  
REALTOR®, SRES

Direct Line: (913) 312-3630

Mobile: (816) 835-3230

TinaGaughan@gmail.com

TinaGaughan.com

11251 Nall Ave. • Leawood, KS 66211

**CHRISTMAS LIGHTS**



we donate to  
**JOHNSON COUNTY CHRISTMAS BUREAU**

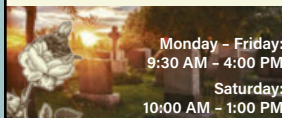
**913-393-3934**

KANSAS CITY  
**MONUMENT**

6842 Troost Ave  
Kansas City, MO 64131

**816-333-0075**

kcmonument1888@outlook.com



Monday - Friday:

9:30 AM - 4:00 PM

Saturday:

10:00 AM - 1:00 PM

learn.  
grow.  
soar.

FORMING MEN AT  
**THE ROCK**  
ROCKHURST HIGH SCHOOL

WWW.ROCKHURSTHS.EDU/ADMISSIONS

**Catholic Family  
CREDIT UNION**

Full Service For All Your Needs  
**816-444-7440**

9237 Ward Parkway, Ste 114

www.catholicfamilycu.com

Savings Insured by the NCUA up to \$250,000



**PILEGGI PAINTING**

Exterior - Interior - Decks - Residential & Commercial

**Frank Pileggi - Owner**

www.PileggiPainting.com

frank@pileggipainting.com | 913-558-5204



**NEW THEATRE  
& Restaurant**  
"Best in the Country" - USA

**Vicki  
Lewis**

from **NEWSRADIO**  
starring in

**NunSense**

One of the longest-running  
musicals in Off-Broadway  
history!

**Family friendly fun for  
Everyone!**

NUNSENSE is an outrageous comedy about a  
nun-fun-raiser to get 4 Frozen nuns out of the  
freezer and on their way to heaven!

Book your group to see one of the  
longest-running off-Broadway comedies in  
New York History!

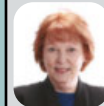
**NOV 20 - FEB 2**

Visit [newtheatre.com](http://newtheatre.com) for tickets!

**URGENT CARE**  
AT HOME

In home evaluations and  
treatments helps you skip the  
wait and get the care you need,  
when and where you need it.

**Meghan Macy**  
FNP-BC, APRN, NE  
**(816) 223-7638**  
www.urgentcareathomekc.com



**Mary Owens Boesen**  
Parishioner  
Life & Health Insurance Sales

**MEDICARE**

Let me help you! 30 years experience

**816-942-0666 • mboesen@kc.rr.com**



**Tran Tax**

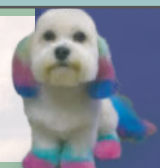
13035 B Holmes Rd.  
**(816) 575.7725 | trantax.com**

STRATEGY • ADVANTAGES • EXPERIENCE

**Old Mill Grooming**

Let us pamper your pet

**(816) 941.8484 | 13031 Holmes Rd.**



mind • body • spirit

**Thai Spring Massage**

**913-279-8824**

13035 Holmes Rd, Suite C, Kansas City, MO 64145

10am - 9pm • Walk-in Welcome



For ad info. call 1-800-950-9952 • [www.4lpi.com](http://www.4lpi.com)

St. Thomas More, Kansas City, MO

B 4C 02-0710





Buy one Breakfast, Lunch or Dinner Combo meal  
and get one of equal or lesser value **FREE**

Limit one coupon per customer per visit. Please present coupon when ordering.  
Not valid with any other offer. Expires April 30, 2025  
Code 0710

24 Highway McDonald's  
11700 East US Highway 24  
Independence, MO

Eastland McDonald's  
18910 East US Highway 40  
Independence, MO

Susuehanna McDonald's  
16235 East US Highway 24  
Independence, MO

BR Crossing McDonald's  
11801 East US Highway 40  
Independence, MO

40 Highway McDonald's  
920 SW US Highway 40  
Blue Springs, MO

North 7 McDonald's  
814 NW State Route 7  
Blue Springs, MO

REDEEMABLE ONLY AT:

Woods Chapel McDonald's  
1515 NW Woods Chapel Rd  
Blue Springs, MO

South 7 McDonald's  
3116 South 7 Highway  
Blue Springs, MO

Chouteau McDonald's  
4400 N Chouteau Traffic Way  
Kansas City, MO

Broadway McDonald's  
3741 Broadway Boulevard  
Kansas City, MO

Red Bridge McDonald's  
11001 Hickman Mills Drive  
Kansas City, MO

Blue Ridge McDonald's  
5260 Blue Ridge Boulevard  
Raytown, MO

Carpets | Area Rugs | Upholstery  
Hardwood Floors | Air Ducts  
Tile & Grout | Residential/Commercial

**WE CLEAN GREEN!** zerorez  
the right way to clean

(816) 425-3655  
www.zerorezkc.com Steven Phelps

**Better Homes and Gardens REAL ESTATE** KANSAS CITY HOMES

Judy Sheaman, ABR  
Sales Executive with 26 Yrs. Experience  
Parishioner  
Licensed in Kansas & Missouri

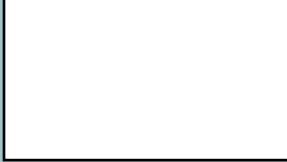
Office: 913-981-2827  
Cell: 816-304-2888  
KC Magazine  
"Five Star Real Estate Agent"  
for overall customer satisfaction since 2005

**Owen LUMBER CO.**

KC's Leading Decking & Andersen Window Supplier  
Mike McGlenn Parishioner  
816-331-2211 OwenLumber.com

**ALLIED CONCRETE PRODUCTS**  
12800 2nd St. Grandview  
816-966-8836  
Judy, Pale, & Amparo Furey Parishioners

**RESIDENTIAL SEWAGE TREATMENT COMPANY, INC.**  
12800 2nd St. Grandview  
816-966-8885  
Kathy Maguire & Tom Fritts Parishioners



**LET'S GROW YOUR BUSINESS**  
Place Your Ad Here and Support Our Parish!

**CONTACT ME Jon Becker**  
jbecker@4LPi.com • (800) 950-9952 x2536

**MCGILLEY MEMORIAL CHAPELS SINCE 1899**

Funerals | Cremations | Receptions | Celebrations  
"Celebrating Lives"

Patrick McGilley | Joe Haster | 816-942-6180 | www.mcgilleystatelinechapel.com

**The Madison SENIOR LIVING**

Learn more about life at The Madison!

Schedule a Tour | (816) 327-1726

*Muehlebach Funeral Care & Cremation Services*

**MUEHLEBACH FUNERAL CARE**

816-444-2060  
www.muehlebachchapel.com  
"Our Family Dedicated to Serving Yours."

Parishioners:  
Steve & Nicole Pierce  
Jordan Pierce STM Class of 2011  
Jenny Mertes  
Tom Reagan

**LINC** Local Investment Commission

Part-time Child Care Jobs  
**Now Hiring!**

Apply at: [kdinc.org/parttimejobs](http://kdinc.org/parttimejobs)  
LINC Caring Communities Sites  
North Kansas City - Kansas City Public Schools  
Center - Hickman Mills - Grandview

**MALACHY CONNOR DESIGN & LANDSCAPE**

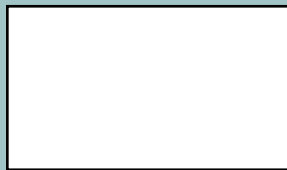
Landscape Design & Installation

Let me design your dream landscape now!  
Book now  
913-515-4166  
MALACHY@CONNORLANDSCAPING.COM

ACCESS YOUR POTENTIAL

**AVILA UNIVERSITY**

Avila.edu/catholic



WE APPRECIATE OUR ADVERTISERS!

John Sweeney CCIM  
**Reece Commercial**  
Commercial Real Estate  
(913) 945-3718 (913) 461-6326 mobile  
John@ReeceCommercial.com  
Brokerage Investment Development Consulting

We are an Independent Agency With Over 30 Years of Experience

- Auto
- Home
- Life
- Commercial

**NESTEL INSURANCE AGENCY**  
Mary Nestel  
816-361-6442  
9233 Ward Parkway Ste 124  
Kansas City, MO 64114  
www.nestelinsurance.com  
info@nestelinsurance.com

Your financial partner throughout your life.

**Matthew Pomianek, AAMS\***, Financial Advisor, Parishioner  
5000 W 95th St Ste 103  
Prairie Village, KS 66207  
913-648-6084  
matthew.pomianek@edwardjones.com

Member SIPC  
**Edward Jones**  
MAKING SENSE OF INVESTING

BURIAL • ENTOMBMENT • CREMATION • TRADITIONAL CEREMONIES • CELEBRATIONS OF LIFE

**CULLEN FUNERAL HOME, INC.**

612 W Foxwood Dr  
Raymore, MO 64083  
(816) 322-5278

PLAN AHEAD  
WE'LL TAKE THE FIRST STEP WITH YOU.

PARISHIONER OWNED  
**JOE & MAGGIE TULIPANA**

**BLIND BOX BBQ**

SHAWNEE  
13214 W 62ND TERR, SHAWNEE, KS 66216

VILLAGE WEST (INSIDE NEBRASKA FURNITURE MART)  
1601 VILLAGE WEST PKWY, KANSAS CITY, KS 66111

WE CATER! 913.268.488Q  
catering@blindboxbbq.com

BLIND BOX BBQ  
BLINDBOXBBQ.COM