

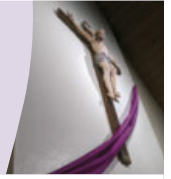


OUR **MISSION** IS TO PROVIDE A WELCOMING, INCLUSIVE, AND LOVING COMMUNITY BY PROCLAIMING AND LIVING GOD'S WORD THROUGH WORSHIP, EDUCATION, AND SOCIAL JUSTICE.

SAINT THOMAS MORE PARISH

11822 Holmes Road, Kansas City, Missouri 64131 • stmkc.com

March 9, 2025



BULLETIN ONLINE

this and last week's at stmkc.com

Subscribe at stmkc.com/emailme →



MASSES IN LENT

WEEKDAY: Mon-Sat, 8:15am,

Tues, Wed, Thu 6:15am

WEEKEND: Sat 4pm, Sun, 7:30am, 9am & 11am

MASS ONLINE CONTINUES

RECONCILIATION IN LENT

Individual Confessions by appointment and Tuesdays and Thursdays, 5-6pm
Saturdays, 7:15-8am, 3-3:45pm

OUR CLERGY

Father Justin Hoye, Pastor

Father Pius Wesonga, AJ, Associate Pastor

In Residence: Father Paul Sappington

AT THE PARISH OFFICE

Office Hours:

Mon. & Wed. 8:45am-1pm, 2-3:30pm*

Tues. & Thurs. 8:45am-1pm, 2-5pm*

Friday 8:45am-1pm

* lunch hour 1-2pm

Parish Office 816-942-2492

Office directory at stmkc.com and p.9

AT THE SCHOOL OFFICE

Linda Crosthwait Principal

Tracy Stewart Assistant Principal

Office hours: Mon.-Thurs., 8am-3:45pm;

Fri., 8:30am-3:30pm

School Office 816-942-5581

School fax 816-941-2450

School email directory at stmkcschool.org

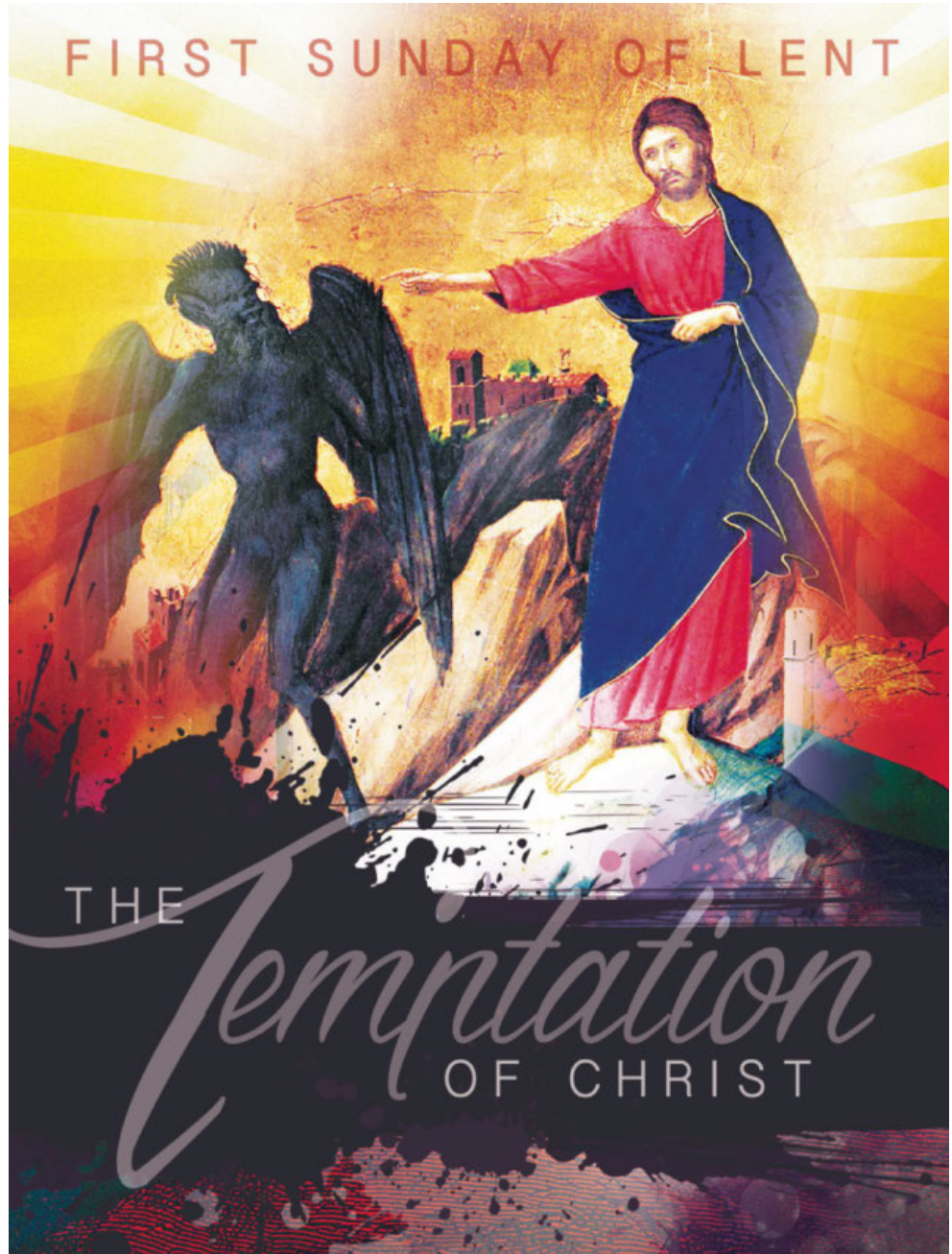
SCHOOL TOURS: contact Principal Linda Crosthwait at 816-942-5581 or crosthwait_linda@stmcyclones.org

SAFE ENVIRONMENT

All employees and volunteers working with minors are required to:

- Create an account at virtus.org
- Attend a Protecting God's Children workshop
- Complete a mandated reporter training
- Submit to a background check
- Read the online Policy on Ethics and Integrity in Ministry

For more Safe Environment information, including reporting and victim resources, see page 10.



Plant the seed of hope

CCEAF

Catholic Charities Emergency Assistance Fund



COLLECTION THIS WEEKEND

see p.6



THE PASTOR'S PEN

Faithful People of Saint Thomas More,

Over 30 have signed up for our Lenten Small group offerings, meeting at five different times during the week. There's still time to join a group and travel with companions during the Lenten pilgrimage.

This weekend at the Cathedral, we celebrate the Rite of Election with members of our OCIA sessions. These individuals are advancing toward full communion in the Catholic Church, and we will be praying for them more intently as we move through Lent. That will include the celebration of the Scrutinies in a few weeks at the 11AM Sunday Masses.

With the start of Spring Break on campus next Friday, we will continue our installation of new carpet in the school, targeting the upper middle school wing. That will coincide also with the beginning work on the church roof.

Father Justin

Small Group Studies

Starting March 9, STM is hosting multiple small group studies of Bishop Barron's *Lenten Gospel Reflections*. Groups will meet weekly through Holy Week.

Day, time and leader

- Sundays, 2-3:30pm - Mike McFarland
- Mondays, 4-5:30pm - Hayley Shaver
- Tuesdays, 9-10:30am - Becky Turner
- Tuesdays, 6-7:30pm - Hayley Shaver
- Thursdays, 2-3:30pm - Ray & Patty Jo Williams



Registration and information

Hayley Shaver: hayley@stmkc.com
or 816-942-2492 x202.

\$20 for Lent

This year benefiting two local ministries. To give, go to stmkc.com/20forlent, scan the QR code, or use the envelopes in the pews and drop in the collection basket.



St. Mary's Home for Mothers - Located in Liberty, they provide shelter for up to 15 homeless, pregnant women and their children. As a residential and community, their mission is to make the pro-life path achievable for women in pregnancies by offering healing and education for moms as they bring life into the world. Visit stmaryshomeformothers.org/about-us/.

Hope Faith Ministries - Hope Faith is a non-denominational, Christian based organization that works to alleviate homelessness and poverty in KCMO by providing basic necessities and assistance to empower individuals experiencing homelessness and at-risk individuals to become self-sufficient and independent services. Visit hopefaith.org/services

To give, go to stmkc.com/20forlent.

Materials available in the narthex

Lenten Lighthouse CDs

- *The Woman at the Foot of the Cross* (Part 1) by Dr. Ben Akers
- *Glimpses Along the Way of the Cross* by Msgr. James P Shea
- *The Passion of Christ in Light of the Holy Shroud of Turin* by Fr. Francis Peffley
- *The True Meaning of Easter* by Venerable Fulton Sheen

Care Notes

- The Season of Lent: From Ashes to Easter
- 40 Ways to Enrich Your Lenten Prayer
- Longing for God: The Grace of Lent
- A Lenten Journey Through Grief
- Lent – A Time to Pray for Others

Lent 2025



Stations of the Cross

Fridays of Lent, 5pm in the Church

Stations of the Cross will be led by a different STM ministry each week. You are also welcome to walk the journey with Jesus when the church is open, using the texts found by each station.

Parish ministries leading Stations of the Cross .

- March 7 The Women of STM
- March 14 SPRED
- March 21 OCIA
- March 28 The Vocations Committee
- April 4 STM School Children
- April 11 The Seven Sisters

Fish Fry Fridays

March 7, 14, (Not 21), 28 and

April 4 & 11, 5-7pm in More Hall

Dine in or get to-go! Menu: Baked and fried fish, fried shrimp, potatoes, corn, green beans, cole slaw and rolls. Cheese pizza and mac 'n cheese available for the kids. Cost: \$12/senior, \$15/adult, \$40/family. Desserts: \$2 each, provided by Girl Scouts.



Fresh Fire Eucharistic Adoration

Friday, March 28, 7-9pm

Fresh Fire is a prayer experience crafted to open hearts to experience Jesus' real presence in the Eucharist by combining candlelit Eucharistic Adoration throughout, with praise and worship music, a speaker offering personal witness, and opportunities to come to the altar for a blessing and intercessory prayer.

Haunted By God: The Life of Dorothy Day

Sunday, March 30, 3-4:30pm, More Hall

An inspiring one-woman dramatic portrait of one of the most outspoken and influential American Catholics of the 20th century. The production incorporates all the wit and prophetic grit of Dorothy's own words about war, peace, American society, compassion, and protest in the Spirit of Jesus.



More information

Contact Peggy at peggy@stmkc.com or 816-942-2492 x210.

About the actor

Lisa Wagner is the founder and director of Still Point Theatre Collective. She founded the company in 1993, motivated by a strong desire to combine ministry and theatre. For over fifteen years, she has toured the country and overseas with *Haunted by God: The Life of Dorothy Day*.

The Seven Last Words of Jesus Christ

Friday, April 18, at noon in the church

Morning Glory Ministry

Monday, March 31, 6:30-8:30am

Ten volunteers are needed to serve breakfast to the hungry at The Catholic Center. Contact Father Justin to sign up: frjhoye@stmkc.com.

One Family RESTORED IN CHRIST, EQUIPPED FOR MISSION



Healing Our Family

Tending wounds and accompanying hearts to freedom in Christ

Come Home to Communion



Daily Masses in Lent

Monday, 8:15am
Tuesday, 6:15 & 8:15am
Wednesday, 6:15 & 8:15am
Thursday, 6:15 & 8:15am
Friday, 8:15am
Saturday, 8:15am

Sign Interpreted services: 2nd Sundays at 11am
Masses are recorded daily; find them at stmkc.com or youtube.stmkc.com.

Church Hours for Private Prayer

Mon.-Fri., 6am-9pm
Sat.-Sun., 7am-9pm

The Light is on for You - Confessions in Lent

Confessions are offered in the reconciliation room.
Tuesday, 5-6pm Thursday, 5-6pm
Saturday, 7:15-8am & 3-3:45pm
and by appointment

Please hold in prayer

CONTACT THE PARISH OFFICE, BULLETIN@STMKC.COM OR 942-2492 X202, TO ADD OR REMOVE NAMES FROM THE PRAYER LIST. IF YOUR NAME IS DROPPED OFF AND YOU ARE IN NEED OF ADDITIONAL PRAYERS FOR HEALING, CONTACT THE PARISH OFFICE. **NAMES APPEAR EVERY OTHER WEEK.**

...our family and friends in the military:

Nick Alder Nathan Butcher TJ Francik Jonathan Kennaley Christopher Yates
Drew Belzer Logan Elrader-Effertz Luke Jokerst Zach Love

...our parishioners who are sick:

Mary Sue Adams Bill Cusick Kathy Lawson Susie Reardon JoAnn Walton
Roberta Aguirre Cricket Hill Linda Neenan Cathy Terwelp Bill Young
Rita Armstrong Donna Johnson Monica Nelson Carol Turner

...our family and friends who are sick:

Tom Bauer Marie Dooley Emily Kurek Carol Shelangouski Stephan Tafuro
Emma Beaver Edward Dulle Denise Adams Mehlo Stephanie Shaver Pat Wells
Scott Caron Chris Frantze Noel Mehlo Peter Szumigala

...our family and friends who have died:

George Hager, brother of John Hager

...our family and friends who are hospitalized:

St. Luke's Hospice Midtown: Dolores "Merle" Pace



Eucharistic Exposition at STM

Sundays, Noon-9pm in the Church

Regular time spent with the Lord in Adoration can be life changing! First Sundays, Noon-1pm, has music.

Stay practical. It might not be possible for you to get to your church whenever you feel like it. But maybe you can arrive early for Mass and spend time with Jesus. Or perhaps you could arrange your schedule so that you (and even a spouse, child, or friend with you) can stop in as you're driving past the church. Even a few minutes can change your week for the better.

Pray the Rosary with Others

Sundays, after 9am Mass

Join with the Knights of Columbus in prayer.

Mon.-Fri., after the 8:15am Mass

All are welcome to pray the rosary or the Fatima devotions with others on first Saturdays, after 8:15am Mass.

March Prayer Intentions

Pope Francis: Let us pray that broken families might discover the cure for their wounds through forgiveness, rediscovering each other's gifts, even in their differences.

Bishop Johnston: For custodial and janitorial staffs, security guards, and maintenance workers who help to keep our lives clean, safe, and functioning. That they be enriched in their work and acknowledged by those whom they serve, often in hidden ways.

Care & Support

Grief Peer Support Group

1st & 3rd Wed. (Mar. 19), 4-5pm, Bauman Room

Grief is difficult and can be experienced as a result of any kind of loss. In addition to supporting each other, we use various resources to better understand our grief. Peggy Lucas, Pastoral Associate, facilitates these groups. Attend as you are able. For more info, contact her at peggy@stmkc.com or 816-942-2492 x210.

Grief Support Meeting

Saturday, March 15, after 8am Mass

The Bereavement Ministry at Cure' of Ars, 9405 Mission Rd, Leawood, KS will meet in the Father Burak room. For more information, call 913-649-2026.

Catholic Charities Emergency Assistance Fund

Second Collection: March 8-9

Kindly consider making a gift to Catholic Charities to support their efforts. In the past year, with volunteer assistance, Catholic Charities of Kansas City~St. Joseph has provided:

- 1100 homes for veterans, seniors, and people with disabilities
- 13,500 pounds of food for families each week
- \$1,000,000 in rent and utilities to keep families stable
- support & mentoring to 350 moms

Give the gift of your time and talent...

....at Catholic Charities' Serve & Lift Center, located at 8001 Longview Road, KCMO 64134. We are serving record numbers since our ribbon cutting and in need of volunteers for the food pantry and Welcome Center. Multiple shifts and times are available Monday-Thursday, 8am-5:30pm. Ready to serve? Email volunteer Coordinator, Andrea Minton, aminton@ccharities.com.

Stay Current on Immigration Policy & Church Teaching

The first 90 days of the new presidential administration have included a flurry of activity and executive orders. Visit uscbb.org/committees/migration to follow the US-CCB/Migration and Refugee Services to stay updated as policies continue to shift.

Locally, there is a VIA Immigration & Refugee Ministry, a pastoral program of the Office of Life & Justice. Contact Raiza Guevara at guevara@diocesekcsj.org or 816-756-1850 x521 for more information.

Meals for Moms

Meals can be a huge support as families welcome new babies! We're putting together an email list to support families in this way at STM. If you would like to be on the list to know when meals are needed, contact Hayley Shaver, hayley@stmkc.com.

February Financials

Regular - \$229,436.07 Plate - \$4,031.85
Facilities - \$1,015.00
Education Fund - \$15,405.00 School - \$633.05

Thank you for your continued contributions to STM!

Encountering THE SEASON

Lent for the Family

First Sunday of Lent (C)

Deuteronomy 26:4-10

Romans 10:8-13

Luke 4:1-13

Dear Family:

Read the reflection about beginning the journey, and discuss the “Ponder and Pray” questions and prompts, thinking about how Our Lord is calling you to act. Then consider the challenges of the “Live It” section, have fun with the family activities, and dive into the *visio divina* prayer exercise.

The Journey Begins with Jesus and Mary

This Lent, we are invited to embark on a journey with Jesus and Mary as Jesus sets his face toward Jerusalem (see Luke 9:51). This path represents the final steps toward his sacrifice, a journey of divine love and mercy. Though the Gospels don’t explicitly mention Mary’s presence alongside Jesus, her deep love for her son suggests she would have remained close, witnessing his ministry and accompanying him in spirit.

Imagine walking with Mary as the crowds gather to hear Jesus. She stands quietly, her eyes fixed on her son, aware of the conversion happening in the hearts of the apostles, the Pharisees, and the sinners on the fringes. Mary, who knows Jesus better than anyone, notices things others miss—his gestures, his focus, and the way he loves each person before him. She tugs at your elbow, gently nodding toward Jesus, reminding you to fix your gaze upon him.

“ We cried to the LORD the God of our fathers,
and the LORD heard our voice, and saw our affliction,
our toil, and our oppression. ”

—Deuteronomy 26:7



Holy Mother and Child by Mike Moyers

As we walk with Mary this Lent, we learn from her unwavering trust in God’s plan. Her maternal gaze helps us to see Jesus through her eyes, drawing us closer to him. Mary’s radical availability to God, her complete surrender, and her compassionate heart challenge us to make ourselves available to God as well.

This Lent, ask yourself: Will I walk with Mary and Jesus? Will I allow her to guide me deeper into the mystery of God’s love and mercy as I journey to the Cross?

To read more about beginning the journey with Jesus and Mary, see *The Ascension Lenten Companion: Walking with Mary to Jerusalem*.

ascensionpress.com • 1-800-376-0520  ASCENSION

Ponder and Pray

- As you imagine walking with Mary alongside Jesus on his journey to Jerusalem, what emotions do you feel? How do you relate to Mary's quiet trust during this time?
- Mary's trust in God's plan is unwavering. Do you struggle to surrender to God, and how might you follow Mary's example of availability and trust?
- As Mary points you to Jesus, what distractions in your life prevent you from fully focusing on him this Lent?

Live It

This week, walk spiritually with Jesus and Mary. In prayer or quiet reflection, ask Mary to help you see Jesus through her eyes—paying attention to his presence in your life. As you practice your Lenten sacrifices of prayer, fasting, and almsgiving, reflect on how you can make yourself more available to God as Mary did. Daily, pray: "Mary, help me walk with Jesus today."

Visio Divina

Spend time reflecting on the image of Mary and the Child Jesus. Jesus appears to be making an offering to the Father, and Mary is gently watching over him.

Question 1:

What stands out to you in this image?

Question 2:

How does Mary's presence in the scene speak to her role as both mother and disciple?

Question 3:

As you reflect, ask God to reveal what he wants you to offer this Lent. What might Jesus be inviting you to surrender to the Father?

For free videos and downloadable resources featuring *Lenten Companion: Walking with Mary to Jerusalem* with Fr. Mark Toups, scan this code with your camera. This bulletin's reflection by Fr. Toups and "Family Fun" were adapted from *Lenten Companion*.



Fun for the Family

During the journey with Jesus and Mary, create a family activity where you "walk" through Lent together. Plan a family walk, during which each person shares one thing they want to surrender to God this Lent. Let this be a time of reflection and connection, allowing each family member to express how he or she can walk more closely with God.

© 2025 Ascension Publishing Group, LLC. This product is intended for reproduction in parish bulletins in either electronic or printed form. Excerpts were taken from the *Lectionary for Mass for Use in the Dioceses of the United States of America, Second Typical Edition* © 2001, 1998, 1997, 1986, 1970 Confraternity of Christian Doctrine, Inc., Washington, DC. Used with permission. All rights reserved. No portion of the *Lectionary* may be reproduced by any means without permission in writing from the copyright owner. The Scripture quotation at the top of the first page is from the *Revised Standard Version—Second Catholic Edition (Ignatius Edition)*, © 2006 National Council of the Churches of Christ in the United States of America. Used by permission. This work is not for resale.

SPRED Class

Monday, March 10, 6:30-8:30pm, More Hall

An adult group for the developmentally delayed meets about every other week to share their faith. Questions? Email Becky at bturner727@yahoo.com.

Protecting God's Children (PGC) Training

Monday, March 10, 6-9pm, in More Hall

Our diocese and parish are both committed to having a safe environment for children. To this end, all adults and teens who work with minors are required to take this training and fulfill other requirements.

Questions? Contact Joan Sandford at 816-942-2492 x202 or joan@stmkc.com.

Considering becoming Catholic?

Inquiry: Tuesdays, 6:15-7:30pm, More Hall A

Mar. 11: Fasting

Sessions are for those from other Christian traditions or those with no religious background. Catholics may also journey with other individuals to learn more about the Catholic Church and to discern God's invitations offered through the Catholic Church. Questions? Contact Father Justin, frijhoye@stmkc.com or 816-942-2492 x204.

School of Religion (SOR)

Wednesdays, 6:15-7:30pm, More Hall A

School of Religion provides catechesis for grade school children, grades 1-8, who do not attend Catholic school. Visit stmkc.com to register online. Click on the "School of Religion" box. Questions? Email Susan at aquiel2000@yahoo.com.

Ladies of Charity (LOC) Lenten Prayer Breakfast

Thursday, March 13, at Church of the Nativity

Women are invited to Leawood, KS to hear Mary Sweat, a nurse in Vietnam in the 1970s. Mary will reflect on her experience there and give an encouraging message for Lenten prayer and meditation. There is no charge but an RSVP is encouraged for the breakfast count. Email signupforLOCevents@gmail.com to sign up.

Children's Liturgy of the Word

1st & 3rd Sundays (Mar. 16), at 9am Mass

We have expanded this semester to two Sundays per month! Children through 2nd grade are invited to participate in Children's Liturgy of the Word next weekend. They will be dismissed from Mass prior to the first read-

ing to go to More Hall to hear the readings on their own level. They rejoin their families after the homily. Questions? Contact Joan Sandford, 816-942-2492 x202 or joan@stmkc.com. And don't forget to grab a "Kids' Bulletin" on the information table in the narthex!

Catholic Health Care: Ethics & Choices

Thursday, March 20, 6-7:30pm

A panel of experts will address the topics of illness, living while you are dying, and death & beyond. This is your opportunity to ask questions and get answers! The experts will provide resources and equip you with the knowledge you need about why Catholic health care is different. Program set up by Catholic Community Health Home Care, Villa St. Francis, Hospice. Our church deanery set up this event to be held at Christ the King Church, 8510 Wornall Rd., KCMO. For more details, visit Catholiccommunityhealth.org or call 913-829-5201.

Worldwide Marriage Encounter (WWME)

Next KC Date: March 28-30

Great marriages don't happen by luck or accident. They are a result of a consistent investment of time, thoughtfulness, forgiveness, affection, prayer, mutual respect and unconditional love. Plan to spend a weekend with your spouse at the Savior Pastoral Center in KC, KS!

For more information or to register for the encounter, visit wwme.org and search by location. Or email greaterkc.wwme@gmail.com or call 816-286-4557. Future dates are June 13-15 & August 8-10.

Retreats & Formation Days Available

There are many retreats to enjoy, held at:

- **Sophia Spirituality Center, Atchison KS:** 913-360-6151, sophia@mountosb.org or visit sophiaspiritualitycenter.org
- **Conception Abbey, Conception MO:** 660-944-2809, guests@conception.edu or visit conceptionabbey.org/guests
- **Precious Blood Renewal Center, Liberty MO:** 816-781-4344, info@pbrenewalcenter.org or visit pbrenewalcenter.org
- **Timber Creek, Drexel MO:** timbercreekretreat.org, 816-619-3399, email tom@timbercreekretreat.org
- **Christ's Peace House, Easton KS:** 913-773-8255 or visit ChristsPeace.com
- **Ignatian Spirituality Center of Kansas City:** rsantana@ignatiancenterkc.org or visit ignatiancenterkc.org/events
- **Marillac Retreat & Spirituality Center, Leavenworth, KS:** visit sclcs.org, email retreats@sclcs.org, call 913-758-6552

You can also book personal stays at these centers.

City On A Hill (COAH) Young Adult Events

Visit kansascityonahill.org/ for more info. Click on Get Involved to sign up for The Loop, a weekly email.

City on a Hill is the Catholic young adult apostolate that provides community, inspiration, and formation for young adults in the Kansas City metro area:

Tuesdays at the Boulevard, March 18

Doors open for confessions at 5:30pm, Mass at 6:30at Sacred Heart Guadalupe Parish, 2544 Madison Ave., KCMO 64108. Followed by pizza and beer for \$20 at Boulevard Brewery across the street.

Sign up for The Loop at kansascityonahill.org for more details and to learn about other events!

Parish Calendar of Events

Sat., Mar. 8 - OCIA Rite of Election

Sun., Mar. 9 - 1st Sunday of Lent

Catholic Charities Emergency Assistance Appeal

Lenten Small Group, 2-3:30pm, Bauman Room

Mon., Mar. 10 - Lenten Small Group, 4-5:30pm, Bauman

Protecting God's Children, 6-9pm, More Hall

SPRED, 6:30-8:30pm, More Hall B/D

Living Waters, 7-9:30pm, Church

Tue., Mar. 11 - Lenten Small Group, 9-10:30am

Lenten Small Group, 6-7:30pm

OCIA, 6:15-7:30pm, More Hall A

Wed., Mar. 12 - Forgiveness Series, 1-2pm, Bauman

School of Religion, 6:15-7:30pm

Thu., Mar. 13 - Lenten Small Group, 2-3:30pm, Bauman

Choir Rehearsal, 7pm, Church

Knights of Columbus mtg., 7:15pm, More Hall

Fri., Mar. 14 - Stations of the Cross, 5pm, Church

Scout Fish Fry, 5-7pm, More Hall

Sun., Mar. 16 - 2nd Sunday of Lent

Children's Liturgy of the Word, 9am Mass

Lenten Small Group, 2-3:30pm, Bauman Room

Mon., Mar. 17 - Lenten Small Group, 4-5:30pm, Bauman

Living Waters, 7-9:30pm, Church

Tue., Mar. 18 - Lenten Small Group, 9-10:30am

Lenten Small Group, 6-7:30pm

OCIA, 6:15-7:30pm, More Hall A

Wed., Mar. 19 - Feast of Saint Joseph

Forgiveness Prayer Series, 1-2pm, Bauman Room

Uplift Casseroles, 1:30-3pm, More Hall Kitchen

Grief Peer Support, 4-5pm, Bauman

School of Religion, 6:15-7:30pm

Thu., Mar. 20 - Lenten Small Group, 2-3:30pm, Bauman

Choir Rehearsal, 7pm, Church

Fri., Mar. 21 - Stations of the Cross, 5pm, Church

No Fish Fry

Sat., Mar. 22 - Living Waters, 9am-1pm, Church

Sun., Mar. 23 - 3rd Sunday of Lent

OCIA 1st Scrutiny, 11am Mass

Lenten Small Group, 2-3:30pm, Bauman Room



STM Vacation Bible School

June 23-27 (Mon.-Fri.), 9am-Noon in More Hall

Plan to come to the ultimate Alaskan adventure! As kids trek the tundra, they'll explore how easy it is to lose sight of what's true in our wild world today. Pointing them toward Jesus, *True North VBS*, shows them that He is a faithful friend we can always trust. He's our True North!

Participation is open to children ages 6-11. Middle/high schoolers and parents are encouraged to volunteer! Service hours will be given. If interested in volunteering, email Hayley Shaver at hayley@stmkc.com.

STM School

Linda Crosthwait, Principal

816-942-5581 STMKSCHOOL.ORG



School Registration

Current families should have received an email with registration instructions. New families will need to contact the school to set up a tour before registration information is sent to them.

Now through Monday, March 24

Grades K-8

Registration Fee - \$2,200/student, capped at 4 children

Fundraising Fee - \$500/family (Football Frenzy)

Tithing - Registered parishioners with 2025 pledge

Tuition (non-parishioners) - \$7400/student

Pre-school/Pre-K (ages 3-4)

Registration Fee - \$450/student

Tuition - 3-day: \$5,000; 5-day: \$7,400

Financial Portion of Registration

For your school registration to be complete, you must

also take care of the financial portion. The remaining appointment time is Fri., Mar. 14, 9am-2pm at the parish office. If that is not an option for you, contact Becky or Tim at the parish office to set an appointment.

MO Scholars Scholarships

Your student could be eligible for up to \$6,375 in scholarships! The Bright Futures Fund is a certified Educational Assistance Organization. Scholarship applications for the 2025-26 school year are available NOW at brightfuturesfund.org.

Donors to this fund are able to receive MO tax credits for contributions. Visit brightfuturesfund.org for more information.

School Dates

Tue., Mar. 11 - Adoration, 2-3pm

Home & School mtg., 6:30-8:30pm, More Hall C

Fri., Mar. 14 - No School; Professional Development Day

Mon.-Fri., Mar. 17-21 - No School; Spring Break

STM School Principal Position Open for 2025-26 Year

If you - or someone you know - would be interested in applying as the next Principal at STM School, please visit kcsjatholic.org and click on "Employment Opportunities" at the bottom.

CYO: Girls' Flag Football This Spring - Grades 3-8

Pay and register at cyojwa.org/current-programs.

Regular Registration: Now-Mar 28

Late Registration: Mar 29-Apr 11

PLKC Spring Sports Sign-ups

Now through Saturday, March 8

Visit plkc.org to sign up for the spring sports.

Boys Volleyball is open for grades 4-8. Coaches are needed for 4th and 8th grades; reach out to Jenny Smith. If tryouts are needed, the grade will be notified.

Track and Field is open to grades 3-8. Email Cathy with any questions: ccisetti@bsd124.org.

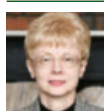
16th Annual School Bell Breakfast

Thursday, April 3, 7:30-9am

Save the date for this Bright Futures Fund's breakfast, to be held at the Westin Kansas City at Crown Center. Come for a morning of inspiration and celebration, including an insightful fireside chat between Bishop James V. Johnston, Jr. and special guest, Dr. Jonathan Doylend, a devout Catholic and physicist. Learn more about Dr. Doylend in the current issue of Catholic Key magazine, catholickey.org.

Rita and Lamar Hunt, through their charitable organization, the Loretto Foundation, will match every School Bell Breakfast donation up to \$200,000. Please visit brightfuturesfund.org for details.

Parish Office Staff



Sharon Arnett
Liturgy Coordinator
x208 sharon@stmkc.com



Bob Sandford
Publications & Music Director
x212 bob@stmkc.com



Mary Begnaud
Receptionist
x201 mary@stmkc.com



Joan Sandford
Office Manager
x202 joan@stmkc.com



Scott Dulle
Building & Grounds Director
dulle_scott@stmcyclones.org



Father Paul Sappington
In Residence
frsappington@smacatholic.org



Father Justin Hoyer
Pastor
x204 frjhoye@stmkc.com



Hayley Shaver
Evangelization & Discipleship
x223 hayley@stmkc.com



Jyllan Hudson
Funeral & Wedding Liturgist
jyllan@stmkc.com



Tim Waris
Business Manager
x218 tim@stmkc.com



Becky Johnson
Finance Coordinator
x224 becky@stmkc.com



Father Pius Wesonga, AJ
Associate Pastor
x203 frpwesonga@stmkc.com



Peggy Lucas
Pastoral Associate/Outreach
x 210 peggy@stmkc.com

Parish Office Hours (until further notice)

Office Hours: M-W 8:45am-3:30pm; T-Th 8:45am-5pm
F 8:45am-1pm

Finance Ministry Team

Justin Hicks, Chair

Stefanie Bresette

Mark Meierhoffer

Laura Christopherson

Bruce Gregg

Parishioner volunteers serve for three-year terms.

Questions? Email FinanceCouncil@stmkc.com.



Diocesan Ombudsman

Joe Crayon crayon@ombudsmankcsj.org or
816-812-2500

Victim Advocate

816-392-0011 or victimadvocate@diocesekcsj.org

To register as a member of Saint Thomas More Parish...

...go to stmkc.com/registration, contact the parish office or pick up a registration form on the Information table in the church narthex.

Safe Environment Information

The Diocese of Kansas City~Saint Joseph is committed to combatting sexual abuse in the Church. If you are a victim of sexual abuse, or if you *observe or suspect* sexual abuse:

- Call the **MO Child Abuse Hotline**, 1-800-392-3738 (if the victim is currently under the age of 18), or **KS Protection Report Center**, 1-800-922-5330, and
- Contact your **local law enforcement agency** or call 911, and
- After reporting to these civil and law enforcement authorities...if the abuse involves a priest, deacon, employee or volunteer of the Diocese of Kansas City~St. Joseph report suspected abuse to the Diocesan Ombudsman, Joe Crayon, at 816-812-2500 or crayon@ombudsmankcsj.org.

The diocese has a sincere commitment to providing care and healing resources to victims of sexual abuse and their families. Please contact the Victim Advocate at 816-392-0011 or victimadvocate@diocesekcsj.org.

FOR ADDITIONAL INFORMATION, contact:

Joan Sandford, Parish Safe Environment Coordinator, safety@stmkc.com or 816-942-2492 x202, OR **Tracy Stewart**, School Safe Environment Coordinator, stewart_tracy@stmcyclones.org or 816-942-5581.

Mass Intentions

Mon: 8:15AM Mary Sue Karl†
3/10

Tues: **6:15AM Norman & Jean Ott†**
3/11 8:15AM BJ Spalding Jr†

Wed: **6:15AM Jerene Hackney†**
3/12 ****8:15AM Bernice Rosewicz†**

Thur: **6:15AM Carolyn Rasmussen†**
3/13 8:15AM John Altergott†

Fri: **8:15AM Jane Keller†**
3/14

Sat: **8:15AM Paula Vohs†**
3/15 4:00PM Matthew McCullough†

Sun: **7:30AM Brian Belden**
3/16 9:00AM Our Parishioners
11:00AM Benedict & Alice Spalding†

† Deceased

**School Mass

To request a Mass intention, stop by the parish office or call 816-942-2492. Suggested donation per Mass is \$10.

SCRIPTURE READINGS

For the daily readings, visit usccb.org/bible/reading. Have the readings sent to your email each day, hear the readings read to you, or watch a video with a reflection based on the readings.

  <p>TJ BRENNAN - Parishioner 816.394.2224 • HOME • AUTO • BUSINESS • LIFE tjbrennan@cekinsurance.com www.cekinsurance.com</p>	<p>WE APPRECIATE OUR ADVERTISERS!</p>	<p>The Genuine. The Original. OVERHEAD DOOR Overhead Door Company of Kansas City™ A SPACER Company</p>
 <p>SUPPORT OUR PARISH</p>	 <p>FREE AD DESIGN with purchase of this space CALL 800-477-4574</p>	 <p>SERVING KANSAS CITY SINCE 1927 REPAIR + REPLACE GARAGE DOORS AND OPENERS RESIDENTIAL DOORS FREE ESTIMATES • 816-320-5430 OverheadDoorKansasCity.com</p>
  <p>Brady Crawford Insurance & Financial Services 816.333.5853 coveredbycrawford.com Locations in Waldo & Martin City</p> <p>RENTERS HOMEOWNERS CONDO AUTO PET PERSONAL ARTICLES BUSINESS LIFE HEALTH</p>	<p>SHORT STAFFED? Place an ad here to find new local talent for your business. CALL 800-477-4574</p>	  <p>Office: 913-722-6200 Cell: 913-269-7124 julie@juliestoll.com Julie Stoll State Farm Agent</p>
<p>IF YOU LIVE ALONE MDMedAlert!™ As Low As \$19⁹⁵ /mo. ✓ Ambulance ✓ Police/Fire ✓ Family/Friends ✓ GPS & Fall Alert CALL NOW! 800.808.9294 md-medalert.com</p>		



For ad info. call 1-800-950-9952 • www.4lpi.com

St. Thomas More, Kansas City, MO

C 4C 02-0710



JEFF THOMPSON
ORTHODONTICS

A Fresh and Polished Approach to Oral Health

4851 WEST 134TH STREET • LEAWOOD • KANSAS 66209-7803
913.681.8300 • WWW.JEFFTHOMPSONORTHO.COM

JEFFREY J. THOMPSON, D.D.S., M.S.
DIPLOMATE AMERICAN BOARD OF ORTHODONTICS

catholicmatch®
Missouri



CatholicMatch.com/MO



WALK-IN CLINIC
for sports injury or fractures

M-F: 9am -11am, 1pm - 3pm. Ages 0 -16

**pediatric orthopaedic
surgery Associates**

5250 W. 94th Terrace, Prairie Village, KS 66207

913-451-0000

www.pedorthokc.com

Like a good neighbor **State Farm**
State Farm is there.®



13012 Fuller
P.O. Box 230
Grandview, MO 64030

STATE FARM INSURANCE COMPANIES
HOME OFFICES BLOOMINGTON, ILLINOIS

Larry B. Langford,
CLU CHFC

Bus.: 816-761-8711
Res.: 816 217 8112

larry.langford.b5u9@statefarm.com



RE/MAX®

State Line Real Estate



Tina R. Gaughan
REALTOR®, SRES

Direct Line: (913) 312-3630

Mobile: (816) 835-3230

TinaGaughan@gmail.com

TinaGaughan.com

11251 Nall Ave. • Leawood, KS 66211

Each Office Independently Owned and Operated



WILLS & TRUSTS • ESTATE PLANNING

Christopher Gaughan, Parishioner
ESTATE PLANNING ATTORNEY

- Estate Planning
- Business Succession
- Wills & Living Trusts
- Powers of Attorney
- Farm & Ranch Planning
- Special Needs Trusts

CALL FOR A FREE CONSULTATION!



GAUGHAN & CONNEALY
ESTATE PLANNING ATTORNEYS
4400 College Blvd, Suite 190 | Overland Park, KS 66211
(913) 262-2000 | www.MidwestEstatePlan.com



Spring savings!
11% OFF wood rot
repair services

913-393-3934

www.odysseypainting.com

Exterior/Interior Painting - Home/Deck/Fence Repair - Exterior Door/Garage Door Replacement



**FREE
AD DESIGN**

with purchase
of this space

CALL
800-950-9952

WE'RE HIRING!

AD SALES EXECUTIVES

BE YOURSELF.
BRING YOUR PASSION.
WORK WITH PURPOSE.

- Paid training
- Some travel
- Work-life balance
- Full-Time with benefits
- Serve your community



Contact us at
careers@4lpi.com or
www.4lpi.com/careers

learn.
grow.
soar.

FORMING MEN AT
THE ROCK

ROCKHURST HIGH SCHOOL

WWW.ROCKHURSTHS.EDU/ADMISSIONS



**Catholic Family
CREDIT UNION**

Full Service For All Your Needs
816-444-7440

9237 Ward Parkway, Ste 114

www.catholicfamilycu.com

Savings Insured by the NCUA up to \$250,000



PILEGGI PAINTING

Exterior - Interior - Decks - Residential & Commercial

Frank Pileggi - Owner

www.PileggiPainting.com

frank@pileggipainting.com | 913-558-5204

LET'S GROW YOUR BUSINESS

Place Your Ad Here
and Support Our Parish!

**CONTACT ME
Jon Becker**

jbecker@4LPi.com
(800) 950-9952 x2536

**DOES YOUR NONPROFIT
ORGANIZATION NEED
A NEWSLETTER?**

Engaging, ad-supported
print and digital newsletters
to reach your community.

Visit lpicommunities.com

**OUR COMMU
NEWSLETTE
OUTSIDE EDITION**

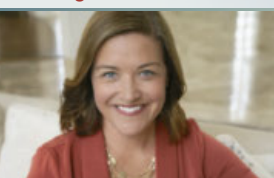


Scan to
contact us!

URGENT CARE
AT HOME

In home evaluations and
treatments helps you skip the
wait and get the care you need,
when and where you need it.

Meghan Macy
FNP-BC, APRN, NE
(816) 223-7638
www.urgentcareathomekc.com



Mary Owens Boesen
Parishioner
Life & Health Insurance Sales

MEDICARE

Let me help you! 30 years experience

816-942-0666 • mboesen@kc.rr.com



Tran Tax

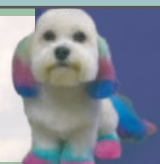
13035 B Holmes Rd.
(816) 575.7725 | trantax.com

STRATEGY • ADVANTAGES • EXPERIENCE

Old Mill Grooming

Let us pamper your pet

(816) 941.8484 | 13031 Holmes Rd.



mind • body • spirit

Thai Spring Massage

913-279-8824

13035 Holmes Rd, Suite C, Kansas City, MO 64145

10am - 9pm • Walk-in Welcome



For ad info. call 1-800-950-9952 • www.4lpi.com

St. Thomas More, Kansas City, MO

B 4C 02-0710



Buy one Breakfast, Lunch or Dinner Combo meal
and get one of equal or lesser value **FREE**

Limit one coupon per customer per visit. Please present coupon when ordering.
Not valid with any other offer. Expires April 30, 2026
Code 0710

24 Highway McDonald's
11700 East US Highway 24
Independence, MO

Eastland McDonald's
18910 East US Highway 40
Independence, MO

Susuehanna McDonald's
16235 East US Highway 24
Independence, MO

BR Crossing McDonald's
11801 East US Highway 40
Independence, MO

40 Highway McDonald's
920 SW US Highway 40
Blue Springs, MO

North 7 McDonald's
814 NW State Route 7
Blue Springs, MO

REDEEMABLE ONLY AT:

Woods Chapel McDonald's
1515 NW Woods Chapel Rd
Blue Springs, MO

South 7 McDonald's
3116 South 7 Highway
Blue Springs, MO

Chouteau McDonald's
4400 N Chouteau Traffic Way
Kansas City, MO

Broadway McDonald's
3741 Broadway Boulevard
Kansas City, MO

Red Bridge McDonald's
11001 Hickman Mills Drive
Kansas City, MO

Blue Ridge McDonald's
5260 Blue Ridge Boulevard
Raytown, MO

Carpets | Area Rugs | Upholstery
Hardwood Floors | Air Ducts
Tile & Grout | Residential/Commercial

WE CLEAN GREEN! zerorez

(816) 425-3655
www.zerorezkc.com Steven Phelps

Better Homes and Gardens REAL ESTATE KANSAS CITY HOMES

Judy Sheaman, ABR
Sales Executive with 26 Yrs. Experience
Parishioner
Licensed in Kansas & Missouri

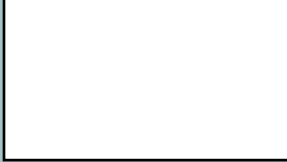
Office: 913-981-2827
Cell: 816-304-2888
KC Magazine
"Five Star Real Estate Agent"
for overall customer satisfaction since 2005

Owen LUMBER CO.

KC's Leading Decking & Andersen Window Supplier
Mike McGlinn Parishioner
816-331-2211 OwenLumber.com

ALLIED CONCRETE PRODUCTS
12800 2nd St. Grandview
816-966-8836
Judy, Pale, & Amparo Furey Parishioners

RESIDENTIAL SEWAGE TREATMENT COMPANY, INC.
12800 2nd St. Grandview
816-966-8885
Kathy Maguire & Tom Fritts Parishioners



LET'S GROW YOUR BUSINESS
Place Your Ad Here and Support Our Parish!

CONTACT ME Jon Becker
jbecker@4LPi.com • (800) 950-9952 x2536

MCGILLEY MEMORIAL CHAPELS SINCE 1899

Funerals | Cremations | Receptions | Celebrations
"Celebrating Lives"

Patrick McGilley | Joe Haster | 816-942-6180 | www.mcgilleystatelinechapel.com

The Madison SENIOR LIVING

Learn more about life at The Madison!

Schedule a Tour | (816) 327-1726

Muehlebach Funeral Care & Cremation Services

MUEHLEBACH FUNERAL CARE

816-444-2060
www.muehlebachchapel.com
"Our Family Dedicated to Serving Yours."

Parishioners:
Steve & Nicole Pierce
Jordan Pierce STM Class of 2011
Jenny Mertes
Tom Reagan

LINC Local Investment Commission

Part-time Child Care Jobs
Now Hiring!

Apply at: kclinc.org/parttimejobs
LINC Caring Communities Sites
North Kansas City - Kansas City Public Schools
Center - Hickman Mills - Grandview

Your financial partner throughout your life.

Matthew Pomianek, AAMS*, Financial Advisor, Parishioner
5000 W 95th St Ste 103
Prairie Village, KS 66207
913-648-6084
matthew.pomianek@edwardjones.com

Member SIPC
Edward Jones
MAKING SENSE OF INVESTING

got crack? WE GOT YOUR BACK!

CRACKOLOGY
FOUNDATION REPAIR & WATERPROOFING

Call us! 816-402-2217

WE APPRECIATE OUR ADVERTISERS!

ACCESS YOUR POTENTIAL

AVILA UNIVERSITY
Avila.edu/catholic

• Auto
• Home
• Life
• Commercial

We are an Independent Agency With Over 30 Years of Experience

NESTEL INSURANCE AGENCY
Mary Nestel
816-361-6442
9233 Ward Parkway Ste 124
Kansas City, MO 64114
www.nestelinsurance.com
info@nestelinsurance.com

JOE & MAGGIE TULIPANA

SHAWNEE
13214 W 62ND TERR, SHAWNEE, KS 66216

VILLAGE WEST (INSIDE NEBRASKA FURNITURE MART)
1601 VILLAGE WEST PKWY, KANSAS CITY, KS 66111

WE CATER! 913.268.488Q
catering@blindboxbbq.com

BLIND BOX BBQ
BLINDBOXBBQ.COM

BURIAL • ENTOMBMENT • CREMATION • TRADITIONAL CEREMONIES • CELEBRATIONS OF LIFE

CULLEN FUNERAL HOME, INC.

612 W Foxwood Dr
Raymore, MO 64083
(816) 322-5278

PLAN AHEAD
WE'LL TAKE THE FIRST STEP WITH YOU.