



OUR **MISSION** IS TO PROVIDE A WELCOMING, INCLUSIVE, AND LOVING COMMUNITY BY PROCLAIMING AND LIVING GOD'S WORD THROUGH WORSHIP, EDUCATION, AND SOCIAL JUSTICE.

SAINT THOMAS MORE PARISH

11822 Holmes Road, Kansas City, Missouri 64131 • stmkc.com

March 16, 2025



BULLETIN ONLINE

this and last week's at stmkc.com
Subscribe at stmkc.com/emailme →



MASSES IN LENT

WEEKDAY: Mon-Sat, 8:15am,
Tues, Wed, Thu 6:15am
WEEKEND: Sat 4pm, Sun, 7:30am, 9am & 11am
MASS ONLINE CONTINUES

RECONCILIATION IN LENT

Individual Confessions by appointment and
Tuesdays and Thursdays, 5-6pm
Saturdays, 7:15-8am, 3-3:45pm

OUR CLERGY

Father Justin Hoye, Pastor
Father Pius Wesonga, AJ, Associate Pastor
In Residence: Father Paul Sappington

AT THE PARISH OFFICE

Office Hours:
Mon. & Wed. 8:45am-1pm, 2-3:30pm*
Tues. & Thurs. 8:45am-1pm, 2-5pm*
Friday 8:45am-1pm
* lunch hour 1-2pm

Parish Office 816-942-2492
Office directory at stmkc.com and p.9

AT THE SCHOOL OFFICE

Linda Crosthwait Principal
Tracy Stewart Assistant Principal

Office hours: Mon.-Thurs., 8am-3:45pm;
Fri., 8:30am-3:30pm

School Office 816-942-5581
School fax 816-941-2450
School email directory at stmkcschool.org

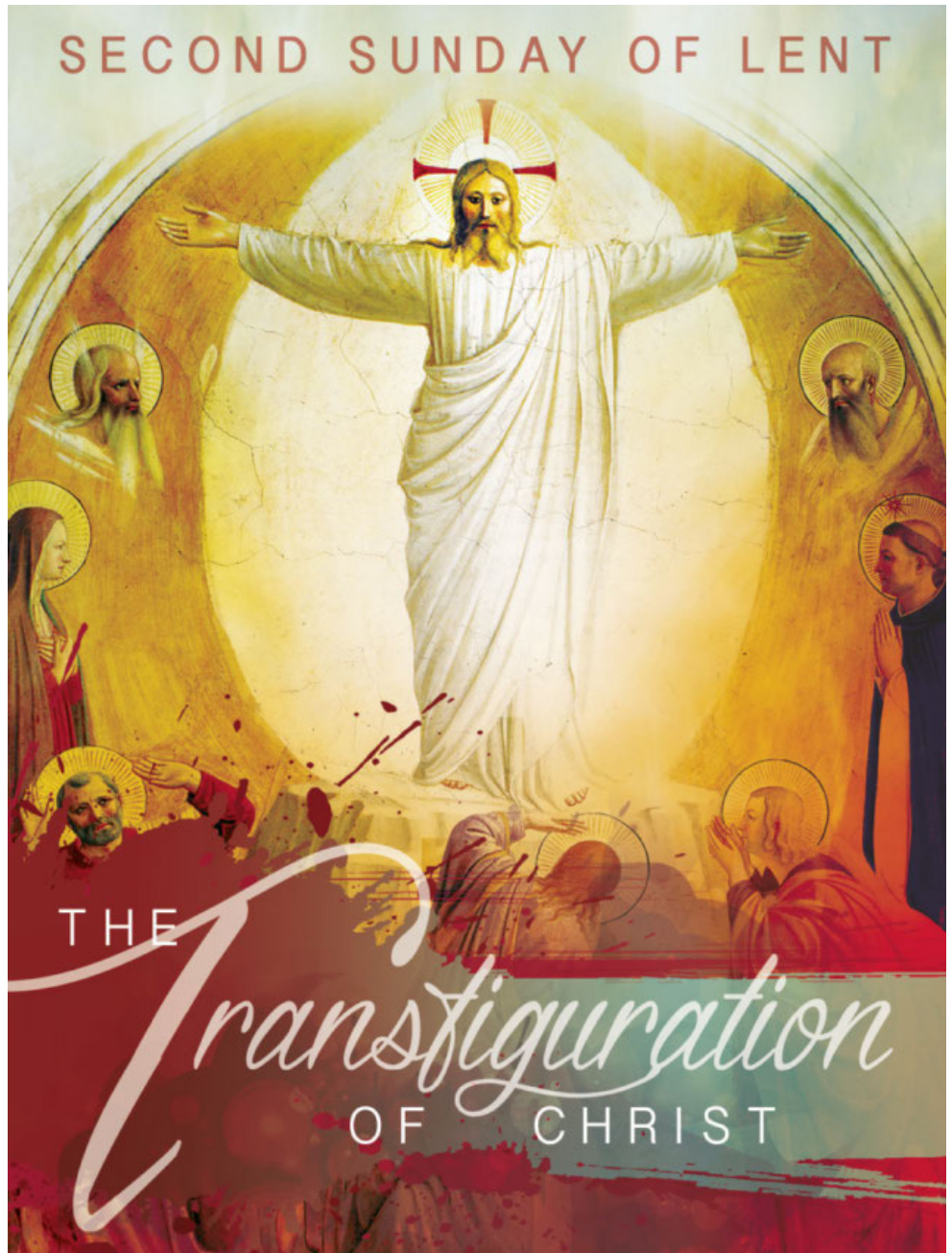
SCHOOL TOURS: contact Principal Linda Crosthwait at
816-942-5581 or crosthwait_linda@stmcyclones.org

SAFE ENVIRONMENT

All employees and volunteers working with minors are required to:

- Create an account at virtus.org
- Attend a Protecting God's Children workshop
- Complete a mandated reporter training
- Submit to a background check
- Read the online Policy on Ethics and Integrity in Ministry

For more Safe Environment information, including reporting and victim resources, see page 10.



PLEASE PRAY FOR THOSE

PREPARING FOR
SACRAMENTS OF INITIATION
AT THE EASTER VIGIL

SEE PAGE 7



THE PASTOR'S PEN

Faithful People of Saint Thomas More,

Roof work should begin Monday, weather permitting, so be mindful of construction around the church over the next few weeks.

In two weeks, STM hosts a Sunday afternoon production of "Haunted By God: The Life of Dorothy Day" in More Hall. This year marks the centennial of Dorothy Day's pregnancy: an event that would stir her soul and eventual movement into the Catholic Church. The performance is age appropriate for teenagers and up.

After phone interviews with applicants earlier this month, we have begun in-person interviews for the principal position at STM School. Please pray for a good, discerning spirit for our interviewing team and for the applicants.

Spring Break begins this week for our school community. Due to the break, we will NOT have a fish fry next Friday (March 21st). Friday Fish Frys return on March 28th!

Father Justin

Cheese pizza and mac 'n cheese available for the kids. Cost: \$12/senior, \$15/adult, \$40/family. Desserts: \$2 each, provided by Girl Scouts.

Small Group Studies

STM is hosting multiple small group studies of Bishop Barron's *Lenten Gospel Reflections*. Groups meet weekly through Holy Week.

You are welcome to drop in on one of these groups:

- Sundays, 2-3:30pm - Mike McFarland
- Mondays, 4-5:30pm - Hayley Shaver
- Tuesdays, 6-7:30pm - Hayley Shaver
- Thursdays, 2-3:30pm - Patty Jo Williams

Registration and information

Hayley Shaver: hayley@stmkc.com or 816-942-2492 x202.



\$20 for Lent

This year the collection benefits two local ministries. To give, scan the QR code, go to stmkc.com/20forlent, or use the envelopes in the pews and drop them in the Sunday Mass collection basket.

READ MORE



DONATE

St. Mary's Home for Mothers - Located in Liberty, they provide shelter for up to 15 homeless, pregnant women and their children. For more information, visit stmaryshomeformothers.org/about-us/.

Hope Faith Ministries - Hope Faith is a non-denominational, Christian based organization that works to alleviate homelessness and poverty in KCMO. For details about this ministry, visit hopefaith.org/services.

To give, go to stmkc.com/20forlent.

Lent 2025

Stations of the Cross

Fridays of Lent, 5pm in the Church

Stations of the Cross are led by a different STM ministry each week. You are also welcome to walk the journey with Jesus when the church is open, using the texts found by each station.

Parish ministries leading Stations of the Cross .

- March 14 SPRED
- March 21 OCIA
- March 28 The Vocations Committee
- April 4 STM School Staff
- April 11 The Seven Sisters



Fresh Fire Eucharistic Adoration

Friday, March 28, 7-9pm

Fresh Fire is a prayer experience crafted to open hearts to experience Jesus' real presence in the Eucharist by combining candlelit Eucharistic Adoration throughout,

with praise and worship music, a speaker offering personal witness, and opportunities to come to the altar for a blessing and intercessory prayer.

Haunted By God: The Life of Dorothy Day

Sunday, March 30, 3-4:30pm, More Hall

An inspiring one-woman dramatic portrait of one of the most outspoken and influential American Catholics of the 20th century. The production incorporates all the wit and prophetic grit of Dorothy's own words about war, peace, American society, compassion, and protest in the Spirit of Jesus.

More information

Contact Peggy at peggy@stmkc.com or 816-942-2492

x210.

About the actor

Lisa Wagner is the founder and director of Still Point Theatre Collective. She founded the company in 1993, motivated by a strong desire to combine ministry and theatre. For over fifteen years, she has toured the country and overseas with *Haunted by God: The Life of Dorothy Day*.



Sign Interpreted services: 2nd Sundays at 11am
Masses are recorded daily; find them at stmkc.com or youtube.stmkc.com.

Church Hours for Private Prayer

Mon.-Fri., 6am-9pm Sat.-Sun., 7am-9pm

The Light is on for You - Confessions in Lent

Confessions are offered in the reconciliation room.

Tuesday, 5-6pm Thursday, 5-6pm

Saturday, 7:15-8am & 3-3:45pm

and by appointment

Eucharistic Exposition at STM

Sundays, Noon-9pm in the Church

Regular time spent with the Lord in Adoration can be life changing! First Sundays, Noon-1pm, has music.

Pray the Rosary with Others

Sundays, after 9am Mass

Join with the Knights of Columbus in prayer.

Mon.-Fri., after the 8:15am Mass

All are welcome to pray the rosary or the Fatima devotions with others on first Saturdays, after 8:15am Mass.

March Prayer Intentions

Pope Francis: That broken families might discover the cure for their wounds through forgiveness, rediscovering each other's gifts, even in their differences.

Bishop Johnston: For custodial and janitorial staffs, security guards, and maintenance workers who help to keep our lives clean, safe, and functioning. That they be enriched in their work and acknowledged by those whom they serve, often in hidden ways.

Morning Glory Ministry

Monday, March 31, 6:30-8:30am

Ten volunteers are needed to serve breakfast to the hungry at The Catholic Center. Contact Father Justin to sign up: frjhoye@stmkc.com.

The Seven Last Words of Jesus Christ

Friday, April 18, at noon in the church

One Family RESTORED IN CHRIST, EQUIPPED FOR MISSION



Healing Our Family
Tending wounds and accompanying hearts to freedom in Christ

Come Home to Communion



Daily Masses in Lent

Monday, 8:15am

Tuesday, 6:15 & 8:15am

Wednesday, 6:15 & 8:15am

Thursday, 6:15 & 8:15am

Friday, 8:15am

Saturday, 8:15am

Please hold in prayer

CONTACT THE PARISH OFFICE, BULLETIN@STMKC.COM OR 942-2492 X202, TO ADD OR REMOVE NAMES FROM THE PRAYER LIST. IF YOUR NAME IS DROPPED OFF AND YOU ARE IN NEED OF ADDITIONAL PRAYERS FOR HEALING, CONTACT THE PARISH OFFICE. **NAMES APPEAR EVERY OTHER WEEK.**

...our family and friends in the military:

Thomas Edwards
Seth Gulsby

Zacchary Henry
John Hylander

Steve Janner
Sarah Katz

Brian Owara
Alycia Pouch

Nathan Pouch
John P. Sullivan

...our parishioners who are sick:

Peggy Calhoun
Beth Dierks
Joe Dyche

Carol Gretencord
Iva Hamilton
Porter Hovey

Lola Jacobs
Carol Katzer
Carolyn Oberjuerge

Laura Rupp
Bill Swartz
Nancy Swartz

Kathy Vervaecke
Leonardo Viril
Anita Wagner

...our family and friends who are sick:

Duane Brown
Melinda Brown

Alissa Carter
Joy Davie

Charles Haster
Glen Horton

Julie Aguirre Johnson
Richard Layton

Brian Robinson
Lester Wells

...our family and friends who have died:

Antonia Ortiz

Care & Support

Grief Peer Support Group

1st & 3rd Wed. (Mar. 19), 4-5pm, Bauman Room

Grief is difficult and can be experienced as a result of any kind of loss. In addition to supporting each other, we use various resources to better understand our grief. Peggy Lucas, Pastoral Associate, facilitates these groups. Attend as you are able. For more info, contact her at peggy@stmkc.com or 816-942-2492 x210.

Mass with Anointing of the Sick

Saturday, March 22, 10am

Archbishop Naumann and Bishop Johnston will celebrate a special Mass with Anointing of the Sick and ritual blessing of the sick at Cure of Ars Parish (94th and Mission Road, Leawood, KS).

Mass will be preceded by the opportunity for the Sacrament of Reconciliation, 9-9:45am. Anyone who is sick, suffering, chronically ill, and their caregivers, are encouraged to attend. A short reception will be held after Mass. If possible, please send the names of those who wish to receive the Sacrament of Anointing of the Sick to maltak@yahoo.com or call Doug Rivard at 913-620-1759.

One Family RESTORED IN CHRIST, EQUIPPED FOR MISSION



Using Resources Wisely

Aligning God's gifts for the Church's life and mission

Seton Center: Volunteer Training

Tuesday, March 18, 10:30am-3pm, at Seton Center

This training is designed to enhance our volunteers' knowledge of our programs and processes. This event will be beneficial to all volunteers. Volunteer training is essential for brushing up on key skills and receiving updates about Seton Center.

The morning is for ALL volunteers, followed by lunch, noon-1:30pm. The afternoon training is for food pantry and clothing closet volunteers.

To register, email Krista at krista.harper@setonkc.org or visit setonkc.org to register online.

Thank You! - STM Respect Life Baby Shower

Thank you to all those who donated to last month's baby shower, sponsored by the STM Respect Life Committee and benefitting Saint Mary's Home for Mothers in Liberty, MO. (A reminder that St. Mary's Home for Mothers is also one of two recipients of this year's \$20 for Lent campaign.)

Serve Lunch at Hope Faith Ministries

Thursday, March 27, 10am-1pm

To help celebrate the Jubilee Year and be Pilgrims of Hope, the Faith in Action team is coordinating a service project each month. For March, we need five volunteers to help serve lunch. We will first take a tour, then serve lunch. Hope Faith Ministries provides services to people experiencing homelessness and is one of the organizations we are supporting in our \$20 for Lent effort. Email Peggy Lucas at peggy@stmkc.com by Tuesday, March 25, to sign up. Please let Peggy know if you would like to carpool.

Save the Dates!

Blue River Road Clean up: Saturday, April 4, 9-11am

Blingo: Saturday, April 5, at 6pm in More Hall

Watch for more information in the next bulletin.

February Financials

Regular - \$229,436.07

Plate - \$4,031.85

Facilities - \$1,015.00

Education Fund - \$15,405.00 School - \$633.05

Thank you for your continued contributions to STM!

One Family RESTORED IN CHRIST, EQUIPPED FOR MISSION



Growing God's Family

Activating our baptismal call to holiness and being disciple makers

Children's Liturgy of the Word

1st & 3rd Sundays (Mar. 16), at 9am Mass

Children through 2nd grade are invited to participate in Children's Liturgy of the Word this weekend. They will be dismissed from Mass prior to the first reading to go to More Hall to hear the readings on their own level. They rejoin their families after the homily. Questions? Contact Joan Sandford, joan@stmkc.com or 816-942-2492 x202. And don't forget to grab a "Kids' Bulletin" on the information table in the narthex!

Considering becoming Catholic?

Inquiry: Tuesdays, 6:15-7:30pm, More Hall A

Mar. 18: Mercy

Sessions are for those from other Christian traditions or those with no religious background. Catholics may also journey with other individuals to learn more about the Catholic Church and to discern God's invitations offered through the Catholic Church. Questions? Contact Father Justin, frjhoye@stmkc.com or 816-942-2492 x204.

Encountering THE SEASON

Lent for the Family

Second Sunday of Lent (C)

Genesis 15:5–12, 17–18
Philippians 3:17–4:1 or 3:20–4:1
Luke 9:28b–36

Dear Family:

This week, reflect on the theme of *endurance* as we continue our journey with Jesus and Mary. Explore the reflection questions in the “Ponder and Pray” section, and take on the challenges in the “Live It” section. Engage with your family through the activity provided, and spend time in the *visio divina* prayer as we reflect on suffering and compassion.

Enduring Suffering with Jesus and Mary

As we enter Lent’s second week, we continue walking with Jesus on his journey to Jerusalem. In the Good Samaritan parable (see Luke 10:30–37), Jesus teaches us the power of compassion—the willingness to suffer with others. The Samaritan does not pass by the suffering man; instead, he draws near, binds his wounds, and carries him to safety. In the same way, Jesus steps into our suffering, bringing us healing and mercy.

Now, be with Mary as she quietly watches Jesus teach this parable. Her eyes, filled with tenderness, reflect the deep compassion she holds for all who suffer. As you sit beside her, you sense her strength and calm, even as she contemplates the suffering her Son will endure. The road ahead seems

“The LORD is my light and my salvation; whom shall I fear?”
—Psalm 27:1



Temple Found by Mike Moyers

impossible, but Mary endures, her trust unwavering.

Mary, who witnessed Jesus’ life from the beginning, understands suffering intimately. From Simeon’s prophecy in the Temple to the flight into Egypt, she carried the weight of knowing her son’s mission and the suffering it would entail. As we endure our trials, Mary walks with us, showing us how to remain close to Jesus in the face of pain. She reminds us God always works through suffering, drawing us closer to him.

This Lent, as you face your own struggles or witness the pain of others, remember Mary’s strength and endurance. Let her example of compassion and trust guide you to Jesus, who stays with us in our suffering, inviting us to endure with him on the road to redemption.

To read more about enduring suffering with faith, see *The Ascension Lenten Companion: Walking with Mary to Jerusalem*.

Ponder and Pray

- As you reflect on Mary’s quiet strength, can you invite her to help you endure difficulties?
- When do you resist seeking God in moments of suffering? Can you ask for the grace to surrender to him during Lent?
- Imagine walking with Mary on the road to Jerusalem. What does her presence in your own spiritual journey reveal about how to endure hardships with faith and trust?

Live It

This week, reflect on the call to endure suffering—whether in your own life or in the lives of those around you. Like Mary, do not shy away from the pain. Instead, offer it to God in prayer, asking for the strength to endure and for the grace to show compassion. As you continue your Lenten practices, remember that each small sacrifice is an opportunity to endure with Jesus on the road to redemption.

Visio Divina

Spend time reflecting on the image of *Temple Found*. In this scene, Mary and Joseph, after days of searching, find young Jesus speaking in the Temple. As you reflect, imagine Mary’s mix of emotions—her relief at finding her son and her awe at witnessing his divine wisdom.

Question 1:

What emotions arise within you as you contemplate Mary and Joseph’s reaction to finding Jesus in the Temple?

Question 2:

How does this image speak to your own spiritual journey of seeking and “finding” Jesus in unexpected places?

Question 3:

In what ways can you, like Mary, remain patient and trusting, even in moments of confusion or uncertainty?

Fun for the Family

As a family, participate in an act of compassion. Choose a way to serve someone who may be experiencing difficulty, whether through a kind gesture, volunteering, or offering a prayer. Discuss how the act of serving someone else helps you grow in compassion and endurance.

For free videos and downloadable resources featuring *Lenten Companion: Walking with Mary to Jerusalem* with Fr. Mark Toups, scan this code with your camera. This bulletin’s reflection by Fr. Toups and “Family Fun” were adapted from *Lenten Companion*.



PREPARING FOR SACRAMENTS OF INITIATION AT THE EASTER VIGIL

PLEASE
PRAY FOR

“ASK AND IT WILL BE GIVEN TO YOU; SEEK AND YOU WILL FIND; KNOCK AND THE DOOR WILL BE



CAROLINE



STEVE



YESENIA



HENRY



CHRISTINA



LAURA



DANIEL



ALYCE



RITE OF ELECTION



MARA

STM STUDENTS
BEING BAPTIZED AT
THE EASTER VIGIL

ATHENA
LEO
JAKE
MALCOLM
MARIPOSA

OCIA
ORDER OF
CHRISTIAN
INIATION
OF ADULTS

ABOUT



THE ONE WHO KNOCKS, THE DOOR WILL BE OPENED.” MATTHEW 7:7-8

OPENED TO YOU. FOR EVERYONE WHO ASKS, RECEIVES; AND THE ONE WHO SEEKS, FINDS; AND TO

Catholic Health Care: Ethics & Choices

Thursday, March 20, 6-7:30pm

A panel of experts will address the topics of illness, living while you are dying, and death & beyond. This is your opportunity to ask questions and get answers! The experts will provide resources and equip you with the knowledge you need about why Catholic health care is different. Program set up by Catholic Community Health Home Care, Villa St. Francis, Hospice. Our church deanery set up this event to be held at Christ the King Church, 8510 Wornall Rd., KCMO. For more details, visit Catholiccommunityhealth.org or call 913-829-5201. Flyers are also available in the narthex!

SPRED Class

Monday, March 24, 6:30-8:30pm, More Hall

An adult group for the developmentally delayed meets about every other week to share their faith. Questions? Email Becky at btturner727@yahoo.com.

City On A Hill (COAH) Young Adult Events

Visit kansascityonahill.org/ for more info. Click on Get Involved to sign up for *The Loop*, a weekly email.

City on a Hill is the Catholic young adult apostolate that provides community, inspiration, and formation for young adults in the Kansas City metro area:

Tuesdays at the Boulevard, March 18

Doors open for confessions at 5:30pm, Mass at 6:30 at Sacred Heart Guadalupe Parish, 2544 Madison Ave., KCMO 64108. Followed by pizza and beer for \$20 at Boulevard Brewery across the street.

Sign up for *The Loop* at kansascityonahill.org for more details and to learn about other events!

Parish Calendar of Events

Sun., Mar. 16 - 2nd Sunday of Lent

Children's Liturgy of the Word, 9am Mass

Lenten Small Group, 2-3:30pm, Bauman Room

Mon., Mar. 17 - Lenten Small Group, 4-5:30pm, Bauman

Living Waters, 7-9:30pm, Church

Tue., Mar. 18 - Lenten Small Group, 9-10:30am

Lenten Small Group, 6-7:30pm

OCIA, 6:15-7:30pm, More Hall A

Wed., Mar. 19 - Feast of Saint Joseph

Forgiveness Prayer Series, 1-2pm, Bauman Room

Uplift Casseroles, 1:30-3pm, More Hall Kitchen

Grief Peer Support, 4-5pm, Bauman

School of Religion, 6:15-7:30pm

Thu., Mar. 20 - Lenten Small Group, 2-3:30pm, Bauman

Catholic Health Care Q & A, 6-7:30pm, Christ the King

Choir Rehearsal, 7pm, Church

Fri., Mar. 21 - Stations of the Cross, 5pm, Church
No Fish Fry

Sat., Mar. 22 - Living Waters, 9am-1pm, Church

Sun., Mar. 23 - 3rd Sunday of Lent

OCIA 1st Scrutiny, 11am Mass

Lenten Small Group, 2-3:30pm, Bauman Room

Mon., Mar. 24 - Lenten Small Group, 4-5:30pm, Bauman

SPRED, 6:30-8:30pm, More Hall B/D

Living Waters, 7-9:30pm, Church

Tue., Mar. 25 - Lenten Small Group, 9-10:30am

Finance Team mtg., 5:30pm, Bauman Room

Lenten Small Group, 6-7:30pm

No OCIA

Wed., Mar. 26 - Forgiveness Series, 1-2pm, Bauman

School of Religion, 6:15-7:30pm

Thu., Mar. 27 - Lenten Small Group, 2-3:30pm, Bauman

Choir Rehearsal, 7pm, Church

Fri., Mar. 28 - Stations of the Cross, 5pm, Church

Scout Fish Fry, 5-7pm, More Hall

Fresh Fire, 7-9pm, Church

Sun., Mar. 30 - 4th Sunday of Lent

Catholic Relief Services Collection

OCIA 2nd Scrutiny, 11am Mass

Lenten Small Group, 2-3:30pm, Bauman Room

The Life of Dorothy Day, 3-4:30pm, More Hall

STM School

Linda Crosthwait, Principal

816-942-5581 STMKCSCHOOL.ORG



School Registration

Current families were sent an email with registration instructions. New families need to contact the school to set up a tour before registration information is sent to them.

Now through Monday, March 24

Grades K-8

Registration Fee - \$2,200/student, capped at 4 children

Fundraising Fee - \$500/family (Football Frenzy)

Tithing - Registered parishioners with 2025 pledge

Tuition (non-parishioners) - \$7400/student

Pre-school/Pre-K (ages 3-4)

Registration Fee - \$450/student

Tuition - 3-day: \$5,000; 5-day: \$7,400

Financial Portion of Registration

For your school registration to be complete, you must also take care of the financial portion. The remaining appointment time is Fri., Mar. 14, 9am-2pm at the parish office. If that is not an option for you, contact Becky or Tim at the parish office to set an appointment.

MO Scholars Scholarships

Your student could be eligible for up to \$6,375 in scholarships! The Bright Futures Fund is a certified Educational Assistance Organization. Scholarship applications for the 2025-26 school year are available NOW at brightfuturesfund.org.

Donors to this fund are able to receive MO tax credits for contributions. Visit brightfuturesfund.org for more information.

School Dates

Fri., Mar. 14 - No School; Professional Development Day
Mon.-Fri., Mar. 17-21 - No School; Spring Break

Sporting KC Honors STM Students with Kindness Award

Abby Van Leeuwen and Emma Dreiling were awarded tickets to an upcoming Sporting KC game and an opportunity to walk onto the pitch because of the ways in which they manifest kindness in their lives. This was in honor of Kindness Week at STM School.

CYO: Girls' Flag Football This Spring - Grades 3-8

Pay and register at cyojwa.org/current-programs.

Regular Registration: Now-Mar 28

Late Registration: Mar 29-Apr 11



A FAMILY SPORTS SHOWDOWN AT STM!

VOLLEYBALL COMPETITION (MOMS)

- WHEN: MONDAY, MARCH 31 & WEDNESDAY, APRIL 2
- WHO: **MOMS**, PLAYING AT THE GRADE LEVEL OF THEIR OLDEST STM CHILD

BASKETBALL COMPETITION (DADS)

- WHEN: TUESDAY, APRIL 1 & THURSDAY, APRIL 3
- WHO: **DADS**, PLAYING AT THE GR

BRING YOUR CHAIRS AND STAY AFTER GAMES FOR DRINKS AND FELLOWSHIP!

ALL TEAMS FINALS

- WHEN: SATURDAY, APRIL 5
- WHAT: EVERY TEAM BATTLES IT OUT!

NEW THIS YEAR: SATURDAY NIGHT PARTY

- WHERE: SOUTHSIDE BAR & GRILLE (1144 W 103RD ST, KANSAS CITY, MO 64114)
- INCLUDED: LIGHT APPS & LIMITED BAR FOR ALL PLAYERS
FEATURING: LIVE MUSIC BY THE JACKWAGONS + FINAL FOUR GAMES ON THE BIG SCREEN

COST: \$40 PER PLAYER
(COVERS 3 GAMES + SATURDAY EVENT)

All Parish event! Don't have children in school? No problem. Join as a free agent!

Contact Jenny Smith (volleyball): jkalbsmithe@gmail.com or

Eric Gaughan (basketball): eric.gaughan@gmail.com for more information.

Parish Office Staff



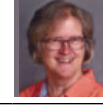
Sharon Arnett
Liturgy Coordinator
x208 sharon@stmkc.com



Bob Sandford
Publications & Music Director
x212 bob@stmkc.com



Mary Begnaud
Receptionist
x201 mary@stmkc.com



Joan Sandford
Office Manager
x202 joan@stmkc.com



Scott Dulle
Building & Grounds Director
dulle_scott@stmcyclones.org



Father Paul Sappington
In Residence
frsappington@smacatholic.org



Father Justin Hoyer
Pastor
x204 frjhoye@stmkc.com



Hayley Shaver
Evangelization & Discipleship
x223 hayley@stmkc.com



Jyllan Hudson
Funeral & Wedding Liturgist
jyllan@stmkc.com



Tim Waris
Business Manager
x218 tim@stmkc.com



Becky Johnson
Finance Coordinator
x224 becky@stmkc.com



Father Pius Wesonga, AJ
Associate Pastor
x203 frpwesonga@stmkc.com



Peggy Lucas
Pastoral Associate/Outreach
x 210 peggy@stmkc.com

Parish Office Hours (until further notice)

Office Hours: M-W 8:45am-3:30pm; T-Th 8:45am-5pm
F 8:45am-1pm

Finance Ministry Team

Justin Hicks, Chair

Mark Meierhoffer

Bruce Gregg

Parishioner volunteers serve for three-year terms.

Questions? Email FinanceCouncil@stmkc.com.

Stefanie Bresette

Laura Christopherson



Diocesan Ombudsman

Joe Crayon crayon@ombudsmankcsj.org or
816-812-2500

Victim Advocate

816-392-0011 or victimadvocate@diocesekcsj.org

To register as a member of Saint Thomas More Parish...

...go to stmkc.com/registration, contact the parish office or pick up a registration form on the Information table in the church narthex.

Safe Environment Information

The Diocese of Kansas City~Saint Joseph is committed to combatting sexual abuse in the Church. If you are a victim of sexual abuse, or if you *observe or suspect* sexual abuse:

- Call the **MO Child Abuse Hotline**, 1-800-392-3738 (if the victim is currently under the age of 18), or **KS Protection Report Center**, 1-800-922-5330, and
- Contact your **local law enforcement agency** or call 911, and
- After reporting to these civil and law enforcement authorities...if the abuse involves a priest, deacon, employee or volunteer of the Diocese of Kansas City~St. Joseph report suspected abuse to the Diocesan Ombudsman, Joe Crayon, at 816-812-2500 or crayon@ombudsmankcsj.org.

The diocese has a sincere commitment to providing care and healing resources to victims of sexual abuse and their families. Please contact the Victim Advocate at 816-392-0011 or victimadvocate@diocesekcsj.org.

FOR ADDITIONAL INFORMATION, contact:

Joan Sandford, Parish Safe Environment Coordinator, safety@stmkc.com or 816-942-2492 x202, OR

Tracy Stewart, School Safe Environment Coordinator, stewart_tracy@stmcyclones.org or 816-942-5581.

Mass Intentions

Mon: 8:15AM Joseph P Effertz[†]
3/17

Tues: **6:15AM Joan & Pat Hughes[†]**
3/18 8:15AM Eugene & Irene Dierks[†]

Wed: **6:15AM Richard Kirkendoll[†]**
3/19 ****8:15AM Emmett Haugh[†]**

Thur: **6:15AM Carol Blum[†]**
3/20 8:15AM Carl & Linda Fiorella[†]

Fri: **8:15AM Alice O'Connor**
3/21

Sat: **8:15AM Blake Mulvany[†]**
3/22 4:00PM Charles Palmentere[†]

Sun: **7:30AM Jane Silver**
3/23 9:00AM Barney & Rosemarie Maguire[†]
11:00AM Our Parishioners

[†] Deceased

**School Mass

To request a Mass intention, stop by the parish office or call 816-942-2492. Suggested donation per Mass is \$10.

SCRIPTURE READINGS

For the daily readings, visit usccb.org/bible/reading. Have the readings sent to your email each day, hear the readings read to you, or watch a video with a reflection based on the readings.

  <p>TJ BRENNAN - Parishioner 816.394.2224 • HOME • AUTO • BUSINESS • LIFE tjbrennan@cekinsurance.com www.cekinsurance.com</p>	<p>WE APPRECIATE OUR ADVERTISERS!</p>	<p>The Genuine. The Original. OVERHEAD DOOR Overhead Door Company of Kansas City™ A SPACER Company</p>
 <p>SUPPORT OUR PARISH</p>	 <p>FREE AD DESIGN with purchase of this space CALL 800-477-4574</p>	 <p>REPAIR + REPLACE GARAGE DOORS AND OPENERS RESIDENTIAL DOORS FREE ESTIMATES • 816-320-5430 OverheadDoorKansasCity.com</p>
  <p>Brady Crawford Insurance & Financial Services 816.333.5853 coveredbycrawford.com Locations in Waldo & Martin City</p> <p>RENTERS HOMEOWNERS CONDO AUTO PET PERSONAL ARTICLES BUSINESS LIFE HEALTH</p>	<p>SHORT STAFFED? Place an ad here to find new local talent for your business. CALL 800-477-4574</p>	  <p>Office: 913-722-6200 Cell: 913-269-7124 julie@juliestoll.com Julie Stoll State Farm Agent</p>
<p>IF YOU LIVE ALONE MDMedAlert!™ As Low As \$19⁹⁵ mo. ✓ Ambulance ✓ Police/Fire ✓ Family/Friends ✓ GPS & Fall Alert CALL NOW! 800.808.9294 md-medalert.com</p>		



For ad info. call 1-800-950-9952 • www.4lpi.com

St. Thomas More, Kansas City, MO

C 4C 02-0710



A Fresh and Polished Approach to Oral Health

4851 WEST 134TH STREET • LEAWOOD • KANSAS 66209-7803
913.681.8300 • WWW.JEFFTHOMPSONORTHO.COM

JEFFREY J. THOMPSON, D.D.S., M.S.
DIPLOMATE AMERICAN BOARD OF ORTHODONTICS

catholicmatch®
Missouri



CatholicMatch.com/MO



WALK-IN CLINIC
for sports injury or fractures

M-F: 9am -11am, 1pm - 3pm. Ages 0 -16

**Pediatric orthopaedic
surgery Associates**

5250 W. 94th Terrace, Prairie Village, KS 66207

913-451-0000

www.pedorthokc.com

Like a good neighbor **State Farm**
State Farm is there.®



13012 Fuller
P.O. Box 230
Grandview, MO 64030

STATE FARM INSURANCE COMPANIES
HOME OFFICES BLOOMINGTON, ILLINOIS

Larry B. Langford,
CLU CHFC

Bus.: 816-761-8711
Res.: 816 217 8112

larry.langford.b5u9@statefarm.com



RE/MAX®

State Line Real Estate



Tina R. Gaughan
REALTOR®, SRES

Direct Line: (913) 312-3630

Mobile: (816) 835-3230

TinaGaughan@gmail.com

TinaGaughan.com

11251 Nall Ave. • Leawood, KS 66211

Each Office Independently Owned and Operated



WILLS & TRUSTS • ESTATE PLANNING

Christopher Gaughan, Parishioner
ESTATE PLANNING ATTORNEY

- Estate Planning
- Business Succession
- Wills & Living Trusts
- Powers of Attorney
- Farm & Ranch Planning
- Special Needs Trusts

CALL FOR A FREE CONSULTATION!



GAUGHAN & CONNEALY
ESTATE PLANNING ATTORNEYS
4400 College Blvd, Suite 190 | Overland Park, KS 66211
(913) 262-2000 | www.MidwestEstatePlan.com



Spring savings!
11% OFF wood rot
repair services

913-393-3934

www.odysseypainting.com

Exterior/Interior Painting - Home/Deck/Fence Repair - Exterior Door/Garage Door Replacement



**FREE
AD DESIGN**

with purchase
of this space

CALL
800-950-9952

WE'RE HIRING!

AD SALES EXECUTIVES

BE YOURSELF.
BRING YOUR PASSION.
WORK WITH PURPOSE.

- Paid training
- Some travel
- Work-life balance
- Full-Time with benefits
- Serve your community



Contact us at
careers@4lpi.com or
www.4lpi.com/careers

learn.
grow.
soar.

**FORMING MEN AT
THE ROCK**

ROCKHURST HIGH SCHOOL

WWW.ROCKHURSTHS.EDU/ADMISSIONS



**Catholic Family
CREDIT UNION**

Full Service For All Your Needs
816-444-7440

9237 Ward Parkway, Ste 114

www.catholicfamilycu.com

Savings Insured by the NCUA up to \$250,000



PILEGGI PAINTING

Exterior - Interior - Decks - Residential & Commercial

Frank Pileggi - Owner

www.PileggiPainting.com

frank@pileggipainting.com | 913-558-5204

LET'S GROW YOUR BUSINESS

Place Your Ad Here
and Support Our Parish!

**CONTACT ME
Jon Becker**

jbecker@4LPi.com
(800) 950-9952 x2536

**DOES YOUR NONPROFIT
ORGANIZATION NEED
A NEWSLETTER?**

Engaging, ad-supported
print and digital newsletters
to reach your community.

Visit lpicommunities.com

**OUR COMMU
NEWSLETTE
OUTSIDE EDITION**

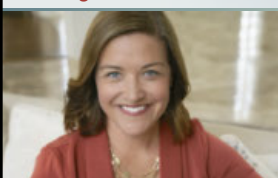


Scan to
contact us!

**URGENT CARE
AT HOME**

In home evaluations and
treatments helps you skip the
wait and get the care you need,
when and where you need it.

Meghan Macy
FNP-BC, APRN, NE
(816) 223-7638
www.urgentcareathomekc.com



Mary Owens Boesen
Parishioner
Life & Health Insurance Sales

MEDICARE

Let me help you! 30 years experience

816-942-0666 • mboesen@kc.rr.com



Tran Tax

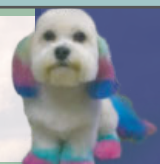
13035 B Holmes Rd.
(816) 575.7725 | trantax.com

STRATEGY • ADVANTAGES • EXPERIENCE

Old Mill Grooming

Let us pamper your pet

(816) 941.8484 | 13031 Holmes Rd.



mind • body • spirit

Thai Spring Massage

913-279-8824

13035 Holmes Rd, Suite C, Kansas City, MO 64145

10am - 9pm • Walk-in Welcome



For ad info. call 1-800-950-9952 • www.4lpi.com

St. Thomas More, Kansas City, MO

B 4C 02-0710



Buy one Breakfast, Lunch or Dinner Combo meal
and get one of equal or lesser value **FREE**

Limit one coupon per customer per visit. Please present coupon when ordering.
Not valid with any other offer. Expires April 30, 2026
Code 0710

24 Highway McDonald's
11700 East US Highway 24
Independence, MO

Eastland McDonald's
18910 East US Highway 40
Independence, MO

Susuehanna McDonald's
16235 East US Highway 24
Independence, MO

BR Crossing McDonald's
11801 East US Highway 40
Independence, MO

40 Highway McDonald's
920 SW US Highway 40
Blue Springs, MO

North 7 McDonald's
814 NW State Route 7
Blue Springs, MO

REDEEMABLE ONLY AT:

Woods Chapel McDonald's
1515 NW Woods Chapel Rd
Blue Springs, MO

South 7 McDonald's
3116 South 7 Highway
Blue Springs, MO

Chouteau McDonald's
4400 N Chouteau Traffic Way
Kansas City, MO

Broadway McDonald's
3741 Broadway Boulevard
Kansas City, MO

Red Bridge McDonald's
11001 Hickman Mills Drive
Kansas City, MO

Blue Ridge McDonald's
5260 Blue Ridge Boulevard
Raytown, MO

Carpets | Area Rugs | Upholstery
Hardwood Floors | Air Ducts
Tile & Grout | Residential/Commercial

WE CLEAN GREEN! zerorez

(816) 425-3655
www.zerorezkc.com Steven Phelps

Better Homes and Gardens REAL ESTATE KANSAS CITY HOMES

Judy Sheaman, ABR
Sales Executive with 26 Yrs. Experience
Parishioner
Licensed in Kansas & Missouri

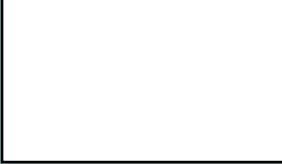
Office: 913-981-2827
Cell: 816-304-2888
KC Magazine
"Five Star Real Estate Agent"
for overall customer satisfaction since 2005

Owen LUMBER CO.

KC's Leading Decking & Andersen Window Supplier
Mike McGlinn Parishioner
816-331-2211 OwenLumber.com

ALLIED CONCRETE PRODUCTS RESIDENTIAL SEWAGE TREATMENT COMPANY, INC.

12800 2nd St. Grandview
816-966-8836 816-966-8885
Judy, Pale, & Amparo Furey Parishioners Kathy Maguire & Tom Fritts Parishioners



LET'S GROW YOUR BUSINESS
Place Your Ad Here and Support Our Parish!

CONTACT ME Jon Becker
jbecker@4LPi.com • (800) 950-9952 x2536

MCGILLEY MEMORIAL CHAPELS SINCE 1899 Funerals | Cremations | Receptions | Celebrations
"Celebrating Lives"
Patrick McGilley | Joe Haster | 816-942-6180 | www.mcgilleystatelinechapel.com

The Madison SENIOR LIVING

Learn more about life at The Madison!

Schedule a Tour | (816) 327-1726

Muehlebach Funeral Care & Cremation Services

MUEHLEBACH FUNERAL CARE

816-444-2060
www.muehlebachchapel.com
"Our Family Dedicated to Serving Yours."

Parishioners: Steve & Nicole Pierce
Jordan Pierce STM Class of 2011
Jenny Mertes
Tom Reagan

LINC Local Investment Commission

Part-time Child Care Jobs
Now Hiring!

Apply at: kclinc.org/parttimejobs
LINC Caring Communities Sites
North Kansas City - Kansas City Public Schools
Center - Hickman Mills - Grandview

Your financial partner throughout your life.

Matthew Pomianek, AAMS*, Financial Advisor, Parishioner
5000 W 95th St Ste 103
Prairie Village, KS 66207
913-648-6084
matthew.pomianek@edwardjones.com

Member SIPC
Edward Jones
MAKING SENSE OF INVESTING

got crack? WE GOT YOUR BACK!

CRACKOLOGY
FOUNDATION REPAIR & WATERPROOFING

Call us! 816-402-2217

WE APPRECIATE OUR ADVERTISERS!

ACCESS YOUR POTENTIAL

AVILA UNIVERSITY
Avila.edu/catholic

• Auto • Home • Life • Commercial

We are an Independent Agency With Over 30 Years of Experience

NESTEL INSURANCE AGENCY
Mary Nestel
816-361-6442
9233 Ward Parkway Ste 124
Kansas City, MO 64114
www.nestelinsurance.com
info@nestelinsurance.com

BLIND BOX BBQ

JOE & MAGGIE TULIPANA

SHAWNEE
13214 W 62ND TERR, SHAWNEE, KS 66216

VILLAGE WEST (INSIDE NEBRASKA FURNITURE MART)
1601 VILLAGE WEST PKWY, KANSAS CITY, KS 66111

WE CATER! 913.268.488Q
catering@blindboxbbq.com

BLIND BOX BBQ
BLINDBOXBBQ.COM

BURIAL • ENTOMBMENT • CREMATION • TRADITIONAL CEREMONIES • CELEBRATIONS OF LIFE

CULLEN FUNERAL HOME, INC.

612 W Foxwood Dr
Raymore, MO 64083
(816) 322-5278

PLAN AHEAD
WE'LL TAKE THE FIRST STEP WITH YOU.