



OUR **MISSION** IS TO PROVIDE
A WELCOMING, INCLUSIVE,
AND LOVING COMMUNITY BY
PROCLAIMING AND LIVING GOD'S
WORD THROUGH WORSHIP,
EDUCATION, AND SOCIAL JUSTICE.

SAINT THOMAS MORE PARISH

11822 Holmes Road, Kansas City, Missouri 64131 • stmkc.com

March 23, 2025



BULLETIN ONLINE

this and last week's at stmkc.com

Subscribe at stmkc.com/emailme→



MASSES IN LENT

WEEKDAY: Mon-Sat, 8:15am,

Tues, Wed, Thu 6:15am

WEEKEND: Sat 4pm, Sun, 7:30am, 9am & 11am

MASS ONLINE CONTINUES

RECONCILIATION IN LENT

Individual Confessions by appointment and

Tuesdays and Thursdays, 5-6pm

Saturdays, 7:15-8am, 3-3:45pm

OUR CLERGY

Father Justin Hoye, Pastor

Father Pius Wesonga, AJ, Associate Pastor

In Residence: Father Paul Sappington

AT THE PARISH OFFICE

Office Hours:

Mon. & Wed. 8:45am-1pm, 2-3:30pm*

Tues. & Thurs. 8:45am-1pm, 2-5pm*

Friday 8:45am-1pm

* lunch hour 1-2pm

Parish Office 816-942-2492

Office directory at stmkc.com and p.9

AT THE SCHOOL OFFICE

Linda Crosthwait

Principal

Tracy Stewart

Assistant Principal

Office hours: Mon.-Thurs., 8am-3:45pm;

Fri., 8:30am-3:30pm

School Office 816-942-5581

School fax 816-941-2450

School email directory at stmkcschool.org

SCHOOL TOURS: contact Principal Linda Crosthwait at
816-942-5581 or crosthwait_linda@stmcydones.org

SAFE ENVIRONMENT

All employees and volunteers working with
minors are required to:

- Create an account at virtus.org
- Attend a Protecting God's Children
workshop
- Complete a mandated reporter training
- Submit to a background check
- Read the online Policy on Ethics and
Integrity in Ministry

For more Safe Environment information,
including reporting and victim resources,
see page 10.

3RD SUNDAY OF LENT

The Lord is kind & merciful.

PSALM 103




CATHOLIC RELIEF SERVICES

COLLECTION
NEXT
WEEKEND

SEE
PAGE 4



THE PASTOR'S PEN

Faithful People of Saint Thomas More,

This week we happily announced that Tracy Stewart, our current Assistant Principal at STM School, will be taking the helm as our Principal for the 2025-26 academic year.

Tracy has been at the school for over two decades, and her acceptance means the preservation of institutional knowledge that helps communities maintain stability during transitions. As an administrator, she has also been involved with our most recent visioning process, and aware of the continued investments we are planning.

Please join me in congratulating Tracy, and praying for her as she prepares to lead us in the next chapter of this parish ministry.

Next Sunday we are very excited to host an afternoon production of "Haunted by God: The Life of Dorothy Day." This hour-and-a-half production (3PM) in More Hall is an internationally performed, one-woman play, brought to us from Chicago. Dorothy Day has been a "Servant of God" for the last 25 years, with her canonization process sent to Rome just four years ago. Refreshments will be served, and the production is age-appropriate for teenagers and up. I hope many will join us, as Dorothy's life is a reminder that the rawness of one's history does not disqualify one from personal holiness.

Lastly, construction on the church roof continues. Thank you for your patience, as this good investment is disruptive for a few weeks, but will benefit us for years to come.

Father Justin

the texts found by each station.

Parish ministries leading Stations of the Cross.

| | |
|----------|-------------------------|
| March 21 | OCIA |
| March 28 | The Vocations Committee |
| April 4 | STM School Staff |
| April 11 | The Seven Sisters |

Fish Fry Fridays

(NOT March 21), March 28,

April 4 & 11, 5-7pm in More Hall

Dine in or get-to-go! Menu: Baked and fried fish, fried shrimp, potatoes, corn, green beans, cole slaw and rolls. Cheese pizza and mac 'n cheese available for the kids. Cost: \$12/senior, \$15/adult, \$40/family. Desserts: \$2 each, provided by Girl Scouts.



Fresh Fire Eucharistic Adoration

Friday, March 28, 7-9pm

Fresh Fire is a prayer experience crafted to open hearts to experience Jesus' real presence in the Eucharist by combining candlelit Eucharistic Adoration through-

out, with praise and worship music, a speaker offering personal witness, and opportunities to come to the altar for a blessing and intercessory prayer.

Haunted By God: The Life of Dorothy Day

Sunday, March 30, 3-4:30pm, More Hall

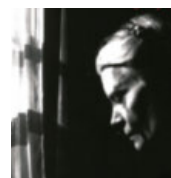
An inspiring one-woman dramatic portrait of one of the most outspoken and influential American Catholics of the 20th century. The production incorporates all the wit and prophetic grit of Dorothy's own words about war, peace, American society, compassion, and protest in the Spirit of Jesus. This play is appropriate for those 13+ years of age.

More information

Contact Peggy at peggy@stmkc.com or 816-942-2492 x210.

About the actor

Lisa Wagner is the founder and director of Still Point Theatre Collective. She founded the company in 1993, motivated by a strong desire to combine ministry and theatre. For over fifteen years, she has toured the country and overseas with Haunted by God: The Life of Dorothy Day.



While researching the play, Lisa looked into the Catholic Worker Movement founded by Dorothy Day and met the St. Catherine of Genoa Catholic Worker community. After volunteering in the house for six months, she became a full-time Catholic Worker and lived in the community for two years.

Lent 2025

Stations of the Cross

Fridays of Lent, 5pm in the Church

Stations of the Cross are led by a different STM ministry each week. You are also welcome to walk the journey with Jesus when the church is open, using



Morning Glory Ministry

Monday, March 31, 6:30-8:30am

Spots have been filled. Thank you!

The Seven Last Words of Jesus Christ

Friday, April 18, at noon in the church

Small Group Studies

STM is hosting multiple small group studies focusing on the Sunday Gospels through Holy Week.

You are welcome to drop in on one of these groups:

Sundays, 2-3:30pm - Mike McFarland

Mondays, 4-5:30pm - Hayley Shaver

Tuesdays, 6-7:30pm - Hayley Shaver

Thursdays, 2-3:30pm - Patty Jo Williams

Registration and information

Hayley Shaver: hayley@stmkc.com

or 816-942-2492 x202.

REGISTER



\$20 for Lent

This year the collection benefits two local ministries. To give, scan the QR code, go to stmkc.com/20forlent, or use the envelopes in the pews.

St. Mary's Home for Mothers provides shelter for up to 15 homeless, pregnant women and their children. Visit them at stmaryshomeformothers.org/about-us/.

Hope Faith Ministries works to alleviate homelessness and poverty in KCMO. For details about this ministry, visit hopefaith.org/services.

To give, go to stmkc.com/20forlent.

READ MORE



DONATE

One Family RESTORED IN CHRIST, EQUIPPED FOR MISSION



Healing Our Family

Tending wounds and accompanying hearts to freedom in Christ

Come Home to Communion



Daily Masses in Lent

Monday, 8:15am

Tuesday, 6:15 & 8:15am

Wednesday, 6:15 & 8:15am

Thursday, 6:15 & 8:15am

Friday, 8:15am

Saturday, 8:15am

Sign Interpreted services: 2nd Sundays at 11am

Masses are recorded daily; find them at stmkc.com or youtube.stmkc.com.

Church Hours for Private Prayer

Mon.-Fri., 6am-9pm

Sat.-Sun., 7am-9pm

The Light is on for You - Confessions in Lent

Confessions are offered in the reconciliation room.

Tuesday, 5-6pm

Thursday, 5-6pm

Saturday, 7:15-8am & 3-3:45pm

and by appointment

Eucharistic Exposition at STM

Sundays, Noon-9pm in the Church

Regular time spent with the Lord in Adoration can be life changing! First Sundays, Noon-1pm, has music.

Please hold in prayer

CONTACT THE PARISH OFFICE, BULLETIN@STMKC.COM OR 942-2492 X202, TO ADD OR REMOVE NAMES FROM THE PRAYER LIST. IF YOUR NAME IS DROPPED OFF AND YOU ARE IN NEED OF ADDITIONAL PRAYERS FOR HEALING, CONTACT THE PARISH OFFICE. **NAMES APPEAR EVERY OTHER WEEK.**

...our family and friends in the military:

Nick Alder
Drew Belzer

Nathan Butcher
Logan Elrader-Effertz

TJ Francik
Luke Jokerst

Jonathan Kennaley
Zach Love

Christopher Yates

...our parishioners who are sick:

Mary Sue Adams
Roberta Aguirre
Rita Armstrong

Bill Cusick
Cricket Hill
Donna Johnson

Kathy Lawson
Linda Neenan

Monica Nelson
Carol Turner

JoAnn Walton
Bill Young

...our family and friends who are sick:

Tom Bauer
Emma Beaver
Scott Caron

Marie Dooley
Edward Dulle
Chris Frantze

Emily Kurek
Denise Adams Mehlo
Noel Mehlo

Carol Shelangouski
Stephanie Shaver
Peter Szumigala

Stephan Tafuro
Pat Wells

...our family and friends who have died:

Mary Accurso; Richard Janssen, son of David Janssen;
Susan Wurtz, sister-in-law of Adele Wurtz

Pray the Rosary with Others

Sundays, after 9am Mass

Join with the Knights of Columbus in prayer.

Mon.-Fri., after the 8:15am Mass

All are welcome to pray the rosary or the Fatima devotions with others on first Saturdays, after 8:15am Mass.

Care & Support

Mass with Anointing of the Sick

Saturday, March 22, 10am

Archbishop Naumann and Bishop Johnston will celebrate a special Mass with Anointing of the Sick and ritual blessing of the sick at Cure of Ars Parish (94th and Mission Road, Leawood, KS).

Mass will be preceded by the opportunity for the Sacrament of Reconciliation, 9-9:45am. Anyone who is sick, suffering, chronically ill, and their caregivers, are encouraged to attend.

Grief Peer Support Group

1st & 3rd Wed. (Apr. 2), 4-5pm, Bauman Room

Grief is difficult and can be experienced as a result of any kind of loss. In addition to supporting each other, we use various resources to better understand our grief. Peggy Lucas, Pastoral Associate, facilitates these groups. Attend as you are able. For more info, contact her at peggy@stmkc.com or 816-942-2492 x210.



Serve Lunch at Hope Faith Ministries

Thursday, March 27, 10am-1pm

To help celebrate the Jubilee Year and be Pilgrims of Hope, the Faith in Action team is coordinating a service project each month. For March, we need five volunteers to help serve lunch. We will first take a tour, then serve lunch. Hope Faith Ministries provides services to people experiencing homelessness and is one of the organizations we are supporting in our \$20 for Lent effort. Email Peggy Lucas at peggy@stmkc.com by Tuesday, March 25, to sign up. Please let Peggy know if you would like to carpool.

Catholic Relief Services Collection

March 29-30

For over 70 years, CRS has worked with organizations around the world to help poor and vulnerable people

overcome emergencies, earn a living through agriculture, and access affordable health care. Your donations to this fund will help provide humanitarian aid, resettle displaced individuals and families, and provide legal and advocacy services for migrants. Please visit crs.org or uscbb.org (search Catholic Relief Services collection) to learn how you make a difference.

Blue River Road Clean up

Saturday, April 4, 9-11am

As part of the city-wide Blue River Clean Up Day, the Green Team invites people to help pick up trash along a 2-3 mile stretch of the road. Meet at 9am at the Minor Park tennis courts parking lot, located on Blue River Road, 1/2 mile south of Red Bridge Road. Dress appropriately: long-sleeved shirt, jeans, sturdy shoes, and gloves. In case of inclement weather, we will reschedule. Please RSVP to Peggy Lucas at peggy@stmkc.com by Wednesday, April 2.

Blingo

Saturday, April 5, at 6pm in More Hall

The Women of STM invite you to join them for a fun night of pizza, bingo, and fellowship. Our guests will be the women from Journey and Peace Houses, residences for women recently transitioning from prison. Those of you who attended a Blingo event before know what a fun and uplifting evening this is! In conjunction with Blingo, we are sponsoring a household shower for Journey and Peace Houses.

- **Blingo prizes** are personal accessories such as jewelry, scarves, purses, etc. that are still in good condition but are ready for a new home. New socks can also be donated as prizes. Please bring your donated prizes when you come that evening.

- **Requested shower items are:** new twin bed linens (sheets, comforters, & pillows); new towels; mops & brooms; hygiene products (no trial sizes please); board games; & picture frames. Again, you can bring shower items when you come that evening.

- **Food:** Pizza, salad, and dessert will be served along with water & lemonade. NOTE: This is a non-alcoholic event, but you are free to bring soft drinks and snacks to share. If you plan to eat, we ask for a \$5 donation. You are also invited to chip in another \$5 to help us cover the cost for our Journey and Peace guests

- **RSVP:** Email wstm@stmkc.com. Questions? Contact Linda at 816-896-3129 or nhageman@msn.com.

February Financials

| | |
|------------------------------|--------------------|
| Regular - \$229,436.07 | Plate - \$4,031.85 |
| Facilities - \$1,015.00 | |
| Education Fund - \$15,405.00 | School - \$633.05 |

Thank you for your continued contributions to STM!

Encountering THE SEASON

Lent for the Family

Third Sunday of Lent (C)

Exodus 3:1–8a, 13–15

1 Corinthians 10:1–6, 10–12

Luke 13:1–9

Dear Family:

This week, reflect on the theme of *noticing* as we continue our journey with Jesus and Mary. Take time to explore the reflection questions in the “Ponder and Pray” section, engage with the challenges in the “Live It” section, spend time with your family through the activity provided, and dive into *visio divina* as we explore how Mary notices and intercedes for us.

She Sees the Hearts of Her Son and Us

As we enter the third week of Lent, we find ourselves once again walking with Jesus as he teaches. In Luke 15, Jesus shares the parables of the lost sheep, the lost coin, and the prodigal son. Jesus emphasizes God’s desire to find those who are lost. Mary, watching Jesus teach, notices the outcasts and sinners in the crowd. She sees their pain, their shame, and their longing to be restored. Her motherly gaze is filled with compassion, noticing more than the surface—she sees the hearts of those around her.

Now imagine sitting beside Mary as she observes the crowd. She sees not just the sinners but also the Pharisees, the apostles, and the disciples. Mary’s ability to notice the interior life of each person reflects how she notices us today.

“ Bless the LORD, O my soul;
and all that is within me, bless his holy name! ”
—Psalm 103:1



Witness in the Crowd by Mike Moyers

Like a mother, she sees beyond our mistakes and our fears. She notices our potential, our longing for holiness, and our desire for God’s mercy. In the same way, Jesus sees us fully, with love and compassion, always ready to welcome us back into his embrace.

This Lent, let us ask for the grace to be seen by Mary—to allow her to notice what we often hide from others and

from ourselves. Through her motherly love, she gently leads us back to her son, where we find healing and restoration. Jesus calls us to notice those who are lost, and Mary helps us see with compassionate hearts.

To read more about how Mary sees us with love and compassion, see *The Ascension Lenten Companion: Walking with Mary to Jerusalem*.

Ponder and Pray

- When you think about Mary truly seeing you, what emotions arise? Can you invite her into the parts of your life that you may struggle to reveal?
- Do you resist letting others notice your pain or vulnerability? Can you ask for the grace to be open to God's healing love?
- In reflecting on the parables of the lost sheep, the lost coin, and the prodigal son, does your perspective of God change, knowing that he notices and pursues you?

Live It

This week, take time to “notice” the people in your life, particularly those who may feel lost or marginalized. Like Mary, pay attention to their needs, their hurts, or their longing for love. Through your Lenten practices, offer compassion, a listening ear, or a kind gesture. Ask Mary to help you notice the goodness in others, even when it's hidden beneath the surface.

Visio Divina

Spend time reflecting on the image of Jesus preaching to the crowds. In this scene, imagine yourself among the crowd, watching Jesus teach with authority and compassion. Feel the anticipation as he shares words of truth and love, speaking to the hearts of all who listen.

Question 1:

As you reflect on the image, what emotions arise as you see Jesus preaching to the crowds? How do you feel being part of the crowd?

Question 2:

What message do you imagine Jesus is speaking to you personally as he teaches?

Question 3:

How does this scene inspire you to listen more attentively to Jesus' words as they apply to you?

Fun for the Family

Create a family activity focused on “noticing” each other's strengths and gifts. Have all family members write down something they appreciate or notice about another member of the family. Share these observations as a way to encourage one another and grow in gratitude and love.

For free videos and downloadable resources featuring *Lenten Companion: Walking with Mary to Jerusalem* with Fr. Mark Touns, scan this code with your camera. This bulletin's reflection by Fr. Touns and “Family Fun” were adapted from *Lenten Companion*.



To Commemorate Saint Thomas More's 60th Anniversary

*The Faith in Action Team
invites every parishioner
to engage in*



ACTS OF KINDNESS

*Each month, between
October 2024 and June
2025, we will feature
suggested small acts of
kindness for you and your
family to try,*



- ⑥ Provide a meal for a mom. Contact Hayley at STM.
- ⑥ Find a Little Free Library in your neighborhood and drop off some books.
- ⑥ Give a compliment to a stranger.
- ⑥ Call an old friend.
- ⑥ Say a prayer of gratitude when you wake up in the morning.
- ⑥ Invite someone you haven't seen for a while to coffee or lunch.
- ⑥ Encourage your children to reach out to another child in their class.
- ⑥ Do a chore for a sibling or a spouse.
- ⑥ Donate money or food to a homeless shelter.
- ⑥ Attend a Fish Fry on Friday. Support the Scouts. Meet someone new. Invite a visitor to Mass.



SPRED Class

Monday, March 24, 6:30-8:30pm, More Hall

An adult group for the developmentally delayed meets about every other week to share their faith. Questions? Email Becky at bturner727@yahoo.com.

Considering becoming Catholic?

Inquiry: Tuesdays, 6:15-7:30pm, More Hall A

Mar. 25: No session; Apr. 1: Forgiveness

Sessions are for those from other Christian traditions or those with no religious background. Catholics may also journey with other individuals to learn more about the Catholic Church and to discern God's invitations offered through the Catholic Church. Questions? Contact Father Justin, frjhoye@stmkc.com or 816-942-2492 x204.

Children's Liturgy of the Word (CLOW)

1st & 3rd Sundays (Apr. 6), at 9am Mass

Children through 2nd grade are invited to participate in Children's Liturgy of the Word this weekend. They will be dismissed from Mass prior to the first reading to go to More Hall to hear the readings on their own level. They rejoin their families after the homily. Questions? Contact Joan Sandford, joan@stmkc.com or 816-942-2492 x202. And don't forget to grab a "Kids' Bulletin" on the information table in the narthex!

NOTE: We will offer CLOW on Palm Sunday (2nd Sunday) instead of Easter Sunday (3rd Sunday).

Parish Calendar of Events

Sat., Mar. 22 - Living Waters, 9am-1pm, Church

Sun., Mar. 23 - 3rd Sunday of Lent

OCIA 1st Scrutiny, 11am Mass

Lenten Small Group, 2-3:30pm, Bauman Room

Mon., Mar. 24 - Lenten Small Group, 4-5:30pm, Bauman

SPRED, 6:30-8:30pm, More Hall B/D

Living Waters, 7-9:30pm, Church

Tue., Mar. 25 - Lenten Small Group, 9-10:30am

Finance Team mtg., 5:30pm, Bauman Room

Lenten Small Group, 6-7:30pm

No OCIA

Wed., Mar. 26 - Forgiveness Series, 1-2pm, Bauman

School of Religion, 6:15-7:30pm

Thu., Mar. 27 - Lenten Small Group, 2-3:30pm, Bauman

Choir Rehearsal, 7pm, Church

Fri., Mar. 28 - Stations of the Cross, 5pm, Church

Scout Fish Fry, 5-7pm, More Hall

Fresh Fire, 7-9pm, Church

Sun., Mar. 30 - 4th Sunday of Lent

Catholic Relief Services Collection

OCIA 2nd Scrutiny, 11am Mass

Lenten Small Group, 2-3:30pm, Bauman Room

The Life of Dorothy Day, 3-4:30pm, More Hall

Mon., Mar. 31 - STM Serves at Morning Glory, 6:30am

Cleaning floors of Church, 9am-3pm

Lenten Small Group, 4-5:30pm, Bauman

Living Waters, 7-9:30pm, Church

Tue., Apr. 1 - Lenten Small Group, 9-10:30am

Lenten Small Group, 6-7:30pm

OCIA, 6:15-7:30pm, More Hall A

Wed., Apr. 2 - Feast of Saint Joseph

Forgiveness Prayer Series, 1-2pm, Bauman Room

Grief Peer Support, 4-5pm, Bauman

School of Religion, 6:15-7:30pm

Thu., Apr. 3 - Lenten Small Group, 2-3:30pm, Bauman

Choir Rehearsal, 7pm, Church

Knights' Officer mtg., 7pm, Bauman Library

Fri., Apr. 4 - Stations of the Cross, 5pm, Church

Scout Fish Fry, 5-7pm, More Hall

Sat., Apr. 5 - OCIA Retreat, 9am-Noon

Blingo, 6pm, More Hall

Sun. Apr. 6 - 5th Sunday of Lent

Monthly Food Drive, Narthex

Children's Liturgy of the Word, 9am Mass

OCIA 3rd Scrutiny, 11am Mass

Lenten Small Group, 2-3:30pm, Bauman Room

STM School

Linda Crosthwait, Principal

816-942-5581 STMKSCHOOL.ORG



School Registration

New families need to contact the school to set up a tour before registration information is sent to them.

Now through Monday, March 24

Grades K-8

Registration Fee - \$2,200/student, capped at 4 children

Fundraising Fee - \$500/family (Football Frenzy)

Tithing - Registered parishioners with 2025 pledge

Tuition (non-parishioners) - \$7400/student

Pre-school/Pre-K (ages 3-4)

Registration Fee - \$450/student

Tuition - 3-day: \$5,000; 5-day: \$7,400

Financial Portion of Registration

For your school registration to be complete, you must

also take care of the financial portion. The remaining appointment time is Fri., Mar. 14, 9am-2pm at the parish office. If that is not an option for you, contact Becky or Tim at the parish office to set an appointment.

MO Scholars Scholarships

Your student could be eligible for up to \$6,375 in scholarships! The Bright Futures Fund is a certified Educational Assistance Organization. Scholarship applications for the 2025-26 school year are available NOW at brightfuturesfund.org.

Donors to this fund are able to receive MO tax credits for contributions. Visit brightfuturesfund.org for more information.

School Dates

Mon., Mar. 24 - School resumes
 Thu., Apr. 3 - Lenten Penance Service, 2-3pm
 Fri., Apr. 4 - Stations of the Cross, 2:30-3pm
 Tue., Apr. 8 - Adoration, 2-3pm
 Home & School mtg., 6:30-8:30pm, More Hall

CYO: Girls' Flag Football This Spring - Grades 3-8

Pay and register at cyojwa.org/current-programs.
 Regular Registration: Now-Mar 28
 Late Registration: Mar 29-Apr 11



A FAMILY SPORTS SHOWDOWN AT STM!

VOLLEYBALL COMPETITION (MOMS)

- WHEN: MONDAY, MARCH 31 & WEDNESDAY, APRIL 2
- WHO: **MOMS**, PLAYING AT THE GRADE LEVEL OF THEIR OLDEST STM CHILD

BASKETBALL COMPETITION (DADS)

- WHEN: TUESDAY, APRIL 1 & THURSDAY, APRIL 3
- WHO: **DADS**, PLAYING AT THE GR

BRING YOUR CHAIRS AND STAY AFTER GAMES FOR DRINKS AND FELLOWSHIP!

ALL TEAMS FINALS

- WHEN: SATURDAY, APRIL 5
- WHAT: EVERY TEAM BATTLES IT OUT!

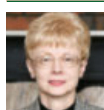
NEW THIS YEAR: SATURDAY NIGHT PARTY

- WHERE: SOUTHSIDE BAR & GRILLE (1144 W 103RD ST, KANSAS CITY, MO 64114)
- INCLUDED: LIGHT APPS & LIMITED BAR FOR ALL PLAYERS
 FEATURING: LIVE MUSIC BY THE JACKWAGONS + FINAL FOUR GAMES ON THE BIG SCREEN

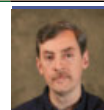
COST: \$40 PER PLAYER
 (COVERS 3 GAMES + SATURDAY EVENT)

All Parish event! Don't have children in school? No problem. Join as a free agent!
 Contact Jenny Smith (volleyball): jkalbsmithe@gmail.com or
 Eric Gaughan (basketball): eric.gaughan@gmail.com for more information.

Parish Office Staff



Sharon Arnett
 Liturgy Coordinator
 x208 sharon@stmkc.com



Bob Sandford
 Publications & Music Director
 x212 bob@stmkc.com



Mary Begnaud
 Receptionist
 x201 mary@stmkc.com



Joan Sandford
 Office Manager
 x202 joan@stmkc.com



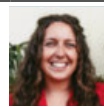
Scott Dulle
 Building & Grounds Director
dulle_scott@stmcydones.org



Father Paul Sappington
 In Residence
frsappington@smacatholic.org



Father Justin Hoyer
 Pastor
 x204 frjhoey@stmkc.com



Hayley Shaver
 Evangelization & Discipleship
 x223 hayley@stmkc.com



Jyllan Hudson
 Funeral & Wedding Liturgist
jyllan@stmkc.com



Tim Waris
 Business Manager
 x218 tim@stmkc.com



Becky Johnson
 Finance Coordinator
 x224 becky@stmkc.com



Father Pius Wesonga, AJ
 Associate Pastor
 x203 frpwesonga@stmkc.com



Peggy Lucas
 Pastoral Associate/Outreach
 x210 peggy@stmkc.com

Parish Office Hours (until further notice)

Office Hours: M-W 8:45am-3:30pm; T-Th 8:45am-5pm
 F 8:45am-1pm

Finance Ministry Team

Justin Hicks, Chair
 Mark Meierhoffer
 Bruce Gregg

Stefanie Bresette
 Laura Christopherson

Parishioner volunteers serve for three-year terms.
 Questions? Email FinanceCouncil@stmkc.com.



Diocesan Ombudsman

Joe Crayon crayon@ombudsmankcsj.org or
 816-812-2500

Victim Advocate

816-392-0011 or victimadvocate@diocesekcsj.org

To register as a member of Saint Thomas More Parish...

...go to stmkc.com/registration, contact the parish office or pick up a registration form on the Information table in the church narthex.

Safe Environment Information

The Diocese of Kansas City~Saint Joseph is committed to combatting sexual abuse in the Church. If you are a victim of sexual abuse, or if you *observe or suspect* sexual abuse:

- Call the **MO Child Abuse Hotline**, 1-800-392-3738 (if the victim is currently under the age of 18), or **KS Protection Report Center**, 1-800-922-5330, and
- Contact your **local law enforcement agency** or call 911, and
- After reporting to these civil and law enforcement authorities...if the abuse involves a priest, deacon, employee or volunteer of the Diocese of Kansas City~St. Joseph report suspected abuse to the Diocesan Ombudsman, Joe Crayon, at 816-812-2500 or crayon@ombudsmankcsj.org.

The diocese has a sincere commitment to providing care and healing resources to victims of sexual abuse and their families. Please contact the Victim Advocate at 816-392-0011 or victimadvocate@diocesekcsj.org.

FOR ADDITIONAL INFORMATION, contact:

Joan Sandford, Parish Safe Environment Coordinator, safety@stmkc.com or 816-942-2492 x202, OR

Tracy Stewart, School Safe Environment Coordinator, stewart_tracy@stmcyclones.org or 816-942-5581.

Mass Intentions

Mon: 8:15AM Ann Verhulst[†]
3/24

Tues: **6:15AM Harry Dierks[†]**
3/25 8:15AM Bob Switzer[†]

Wed: **6:15AM Virginia Gioia[†]**
3/26 ****8:15AM Mike Dulle[†]**

Thur: **6:15AM Thomas Fahey[†]**
3/27 8:15AM Christine Gaughan[†]

Fri: **8:15AM Kathy Rusconi[†]**
3/28

Sat: **8:15AM John & Annette Lofthouse[†]**
3/29 4:00PM Dr. Richard Utarnachitt[†]

Sun: **7:30AM Sam & Rose Arello[†]**
3/30 9:00AM Greg Steffens[†]
11:00AM Our Parishioners

[†] Deceased

****School Mass**

To request a Mass intention, stop by the parish office or call 816-942-2492. Suggested donation per Mass is \$10.

SCRIPTURE READINGS

For the daily readings, visit usccb.org/bible/reading. Have the readings sent to your email each day, hear the readings read to you, or watch a video with a reflection based on the readings.

| | | |
|--|--|---|
|  <p>TJ BRENNAN - Parishioner 816.394.2224 • HOME • AUTO • BUSINESS • LIFE tjbrennan@cekinsurance.com www.cekinsurance.com</p> | <p>WE APPRECIATE OUR ADVERTISERS!</p> | <p>The Genuine. The Original.</p>  <p>Overhead Door Company of Kansas City™ A SPACER Company</p> |
|  <p>SUPPORT OUR PARISH</p> | |  |
|  <p>Brady Crawford Insurance & Financial Services 816.333.5853 coveredbycrawford.com Locations in Waldo & Martin City</p> <p>RENTERS HOMEOWNERS CONDO AUTO PET PERSONAL ARTICLES BUSINESS LIFE HEALTH</p> | <p>FREE AD DESIGN with purchase of this space CALL 800-477-4574</p> | <p>SERVING KANSAS CITY SINCE 1927 REPAIR + REPLACE GARAGE DOORS AND OPENERS RESIDENTIAL DOORS FREE ESTIMATES • 816-320-5430 OverheadDoorKansasCity.com</p> |
| <p>IF YOU LIVE ALONE MDMedAlert!™ As Low As \$19⁹⁵ /mo. ✓ Ambulance ✓ Police/Fire ✓ Family/Friends ✓ GPS & Fall Alert CALL NOW! 800.808.9294 md-medalert.com</p> | <p>SHORT STAFFED? Place an ad here to find new local talent for your business. CALL 800-477-4574</p> |  <p>Office: 913-722-6200 Cell: 913-269-7124 julie@juliestoll.com</p> <p>Julie Stoll State Farm Agent</p> |



For ad info. call 1-800-950-9952 • www.4lpi.com

St. Thomas More, Kansas City, MO

C 4C 02-0710

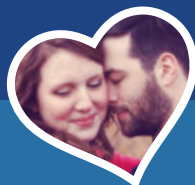


A Fresh and Polished Approach to Oral Health

4851 WEST 134TH STREET • LEAWOOD • KANSAS 66209-7803
913.681.8300 • WWW.JEFFTHOMPSONORTHODONTO.COM

JEFFREY J. THOMPSON, D.D.S., M.S.
DIPLOMATE AMERICAN BOARD OF ORTHODONTICS

catholicmatch®
Missouri



CatholicMatch.com/MO



WALK-IN CLINIC
for sports injury or fractures

M-F: 9am -11am, 1pm - 3pm. Ages 0 -16

**pediatric orthopaedic
surgery Associates**

5250 W. 94th Terrace, Prairie Village, KS 66207

913-451-0000

www.pedorthokc.com

Like a good neighbor **State Farm**
State Farm is there.®



13012 Fuller
P.O. Box 230
Grandview, MO 64030

STATE FARM INSURANCE COMPANIES
HOME OFFICES BLOOMINGTON, ILLINOIS

Larry B. Langford,
CLU CHFC

Bus.: 816-761-8711
Res.: 816 217 8112

larry.langford.b5u9@statefarm.com



RE/MAX®

State Line Real Estate



Tina R. Gaughan
REALTOR®, SRES

Direct Line: (913) 312-3630

Mobile: (816) 835-3230

TinaGaughan@gmail.com

TinaGaughan.com

11251 Nall Ave. • Leawood, KS 66211

Each Office Independently Owned and Operated



WILLS & TRUSTS • ESTATE PLANNING

Christopher Gaughan, Parishioner
ESTATE PLANNING ATTORNEY

- Estate Planning
- Business Succession
- Wills & Living Trusts
- Powers of Attorney
- Farm & Ranch Planning
- Special Needs Trusts

CALL FOR A FREE CONSULTATION!



GAUGHAN & CONNEALY
ESTATE PLANNING ATTORNEYS
4400 College Blvd, Suite 190 | Overland Park, KS 66211
(913) 262-2000 | www.MidwestEstatePlan.com

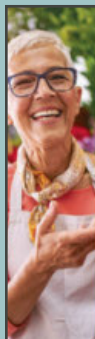


Spring savings!
11% OFF wood rot
repair services

913-393-3934

www.odysseypainting.com

Exterior/Interior Painting • Home/Deck/Fence Repair • Exterior Door/Garage Door Replacement



**FREE
AD DESIGN**

with purchase
of this space

**CALL
800-950-9952**

WE'RE HIRING!

AD SALES EXECUTIVES

BE YOURSELF.
BRING YOUR PASSION.
WORK WITH PURPOSE.

- Paid training
- Some travel
- Work-life balance
- Full-Time with benefits
- Serve your community



Contact us at
careers@4lpi.com or
www.4lpi.com/careers

learn.
grow.
soar.

**FORMING MEN AT
THE ROCK**

ROCKHURST HIGH SCHOOL

WWW.ROCKHURSTHS.EDU/ADMISSIONS



**Catholic Family
CREDIT UNION**

Full Service For All Your Needs
816-444-7440

9237 Ward Parkway, Ste 114

www.catholicfamilycu.com

Savings Insured by the NCUA up to \$250,000



PILEGGI PAINTING

Exterior - Interior - Decks - Residential & Commercial

Frank Pileggi - Owner

www.PileggiPainting.com

frank@pileggipainting.com | 913-558-5204

LET'S GROW YOUR BUSINESS

Place Your Ad Here
and Support Our Parish!

**CONTACT ME
Jon Becker**

jbecker@4LPi.com
(800) 950-9952 x2536

**DOES YOUR NONPROFIT
ORGANIZATION NEED
A NEWSLETTER?**

Engaging, ad-supported
print and digital newsletters
to reach your community.

Visit lpicomunities.com

**OUR COMMUNITY
NEWSLETTER**
OCTOBER EDITION



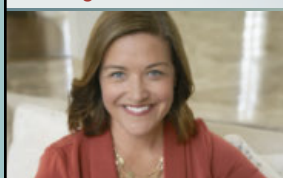
Scan to
contact us!



URGENT CARE
AT HOME

In home evaluations and
treatments helps you skip the
wait and get the care you need,
when and where you need it.

Meghan Macy
FNP-BC, APRN, NE
(816) 223-7638
www.urgentcareathomekc.com



Mary Owens Boesen
Parishioner
Life & Health Insurance Sales

MEDICARE

Let me help you! 30 years experience

816-942-0666 • mboesen@kc.rr.com



Tran Tax

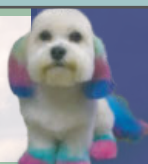
13035 B Holmes Rd.
(816) 575.7725 | trantax.com

STRATEGY » ADVANTAGES » EXPERIENCE

Old Mill Grooming

Let us pamper your pet

(816) 941.8484 | 13031 Holmes Rd.



mind • body • spirit

Thai Spring Massage

913-279-8824

13035 Holmes Rd, Suite C. Kansas City, MO 64145

10am - 9pm • Walk-in Welcome



For ad info. call 1-800-950-9952 • www.4lpi.com

St. Thomas More, Kansas City, MO

B 4C 02-0710



Buy one Breakfast, Lunch or Dinner Combo meal
and get one of equal or lesser value **FREE**

Limit one coupon per customer per visit. Please present coupon when ordering.
Not valid with any other offer. Expires April 30, 2026
Code 0710

24 Highway McDonald's
11700 East US Highway 24
Independence, MO
Eastland McDonald's
18910 East US Highway 40
Independence, MO
Susquehanna McDonald's
16235 East US Highway 24
Independence, MO

BR Crossing McDonald's
11801 East US Highway 40
Independence, MO
40 Highway McDonald's
920 SW US Highway 40
Blue Springs, MO
North 7 McDonald's
814 NW State Route 7
Blue Springs, MO

REDEEMABLE ONLY AT:
Woods Chapel McDonald's
1515 NW Woods Chapel Rd
Blue Springs, MO
South 7 McDonald's
3116 South 7 Highway
Blue Springs, MO
Chouteau McDonald's
4400 N Chouteau Traffic Way
Kansas City, MO

Broadway McDonald's
3741 Broadway Boulevard
Kansas City, MO
Red Bridge McDonald's
11001 Hickman Mills Drive
Kansas City, MO
Blue Ridge McDonald's
5260 Blue Ridge Boulevard
Raytown, MO

Carpets | Area Rugs | Upholstery
Hardwood Floors | Air Ducts
Tile & Grout | Residential/Commercial

WE CLEAN GREEN! **zerorez**
The Right Way to Clean

(816) 425-3655
www.zerorezkc.com Steven Phelps

Better Homes and Gardens REAL ESTATE **KANSAS CITY HOMES**

Judy Sheaman, ABR
Sales Executive with 26 Yrs. Experience
Parishioner
Licensed in Kansas & Missouri

Office: 913-981-2827
Cell: 816-304-2888
KC Magazine
"Five Star Real Estate Agent"
for overall customer satisfaction since 2005

Owen LUMBER CO.

KC's Leading Decking & Andersen Window Supplier
Mike McGlinn
Parishioner

816-331-2211 OwenLumber.com

LET'S GROW YOUR BUSINESS
Place Your Ad Here and Support Our Parish!

CONTACT ME Jon Becker
jbecker@4LPi.com • (800) 950-9952 x2536

ALLIED CONCRETE PRODUCTS
12800 2nd St. Grandview
816-966-8836
Judy, Pete, & Amparo Furey
Parishioners

RESIDENTIAL SEWAGE TREATMENT COMPANY, INC.
12800 2nd St. Grandview
816-966-8885
Kathy Maguire & Tom Fritts
Parishioners

MCGILLEY MEMORIAL CHAPELS SINCE 1899

Funerals | Cremations | Receptions | Celebrations
"Celebrating Lives"

Patrick McGilley | Joe Haster | **816-942-6180** | www.mcgilleystatelinechapel.com

The Madison SENIOR LIVING

Learn more about life at The Madison!

Schedule a Tour | (816) 327-1726

Muehlebach Funeral Care & Cremation Services

MUEHLEBACH FUNERAL CARE

816-444-2060
www.muehlebachchapel.com
"Our Family Dedicated to Serving Yours."

Parishioners:
Steve & Nicole Pierce
Jordan Pierce
STM Class of 2011
Jenny Mertes
Tom Reagan

LINC Local Investment Commission

Part-time Child Care Jobs Now Hiring!

Apply at: kclinc.org/parttimejobs
LINC Caring Communities Sites
North Kansas City - Kansas City Public Schools
Center - Hickman Mills - Grandview

Your financial partner throughout your life.

Matthew Pomianek, AAMS*, Financial Advisor, Parishioner
5000 W 95th St Ste 103
Prairie Village, KS 66207
913-648-6084
matthew.pomianek@edwardjones.com

Member SIPC
Edward Jones
MAKING SENSE OF INVESTING

got crack? WE GOT YOUR BACK!

CRACKOLOGY
FOUNDATION REPAIR & WATERPROOFING

Call us! **816-402-2217**

WE APPRECIATE OUR ADVERTISERS!

ACCESS YOUR POTENTIAL

AVILA UNIVERSITY
Avila.edu/catholic

• Auto
• Home
• Life
• Commercial

We are an Independent Agency With Over 30 Years of Experience

NESTEL INSURANCE AGENCY
"Where Customer Service Counts"

Mary Nestel
816-361-6442
9233 Ward Parkway Ste 124
Kansas City, MO 64114

www.nestelinsurance.com
info@nestelinsurance.com

JOE & MAGGIE TULIPANA

SHAWNEE
13214 W 62ND TERR, SHAWNEE, KS 66216

VILLAGE WEST (INSIDE NEBRASKA FURNITURE MART)
1601 VILLAGE WEST PKWY, KANSAS CITY, KS 66111

WE CATER! 913.268.488Q
catering@blindboxbbq.com

BLIND BOX BBQ
BLINDBOXBBQ.COM

BURIAL • ENTOMBMENT • CREMATION • TRADITIONAL CEREMONIES • CELEBRATIONS OF LIFE

CULLEN FUNERAL HOME, INC.

612 W Foxwood Dr
Raymore, MO 64083
(816) 322-5278

PLAN AHEAD
WE'LL TAKE THE FIRST STEP WITH YOU.