



OUR **MISSION** IS TO PROVIDE
A WELCOMING, INCLUSIVE,
AND LOVING COMMUNITY BY
PROCLAIMING AND LIVING GOD'S
WORD THROUGH WORSHIP,
EDUCATION, AND SOCIAL JUSTICE.

SAINT THOMAS MORE PARISH

11822 Holmes Road, Kansas City, Missouri 64131 • stmkc.com

March 30, 2025



BULLETIN ONLINE

this and last week's at stmkc.com

Subscribe at stmkc.com/emailme→



MASSES IN LENT

WEEKDAY: Mon-Sat, 8:15am,

Tues, Wed, Thu 6:15am

WEEKEND: Sat 4pm, Sun, 7:30am, 9am & 11am

MASS ONLINE CONTINUES

RECONCILIATION IN LENT

Individual Confessions by appointment and
Tuesdays and Thursdays, 5-6pm
Saturdays, 7:15-8am, 3-3:45pm

OUR CLERGY

Father Justin Hoye, Pastor

Father Pius Wesonga, AJ, Associate Pastor

In Residence: Father Paul Sappington

AT THE PARISH OFFICE

Office Hours:

Mon. & Wed. 8:45am-1pm, 2-3:30pm*

Tues. & Thurs. 8:45am-1pm, 2-5pm*

Friday 8:45am-1pm

* lunch hour 1-2pm

Parish Office 816-942-2492

Office directory at stmkc.com and p.9

AT THE SCHOOL OFFICE

Linda Crosthwait

Principal

Tracy Stewart

Assistant Principal

Office hours: Mon.-Thurs., 8am-3:45pm;

Fri., 8:30am-3:30pm

School Office 816-942-5581

School fax 816-941-2450

School email directory at stmkcschool.org

SCHOOL TOURS: contact Principal Linda Crosthwait at
816-942-5581 or crosthwait_linda@stmcyclones.org

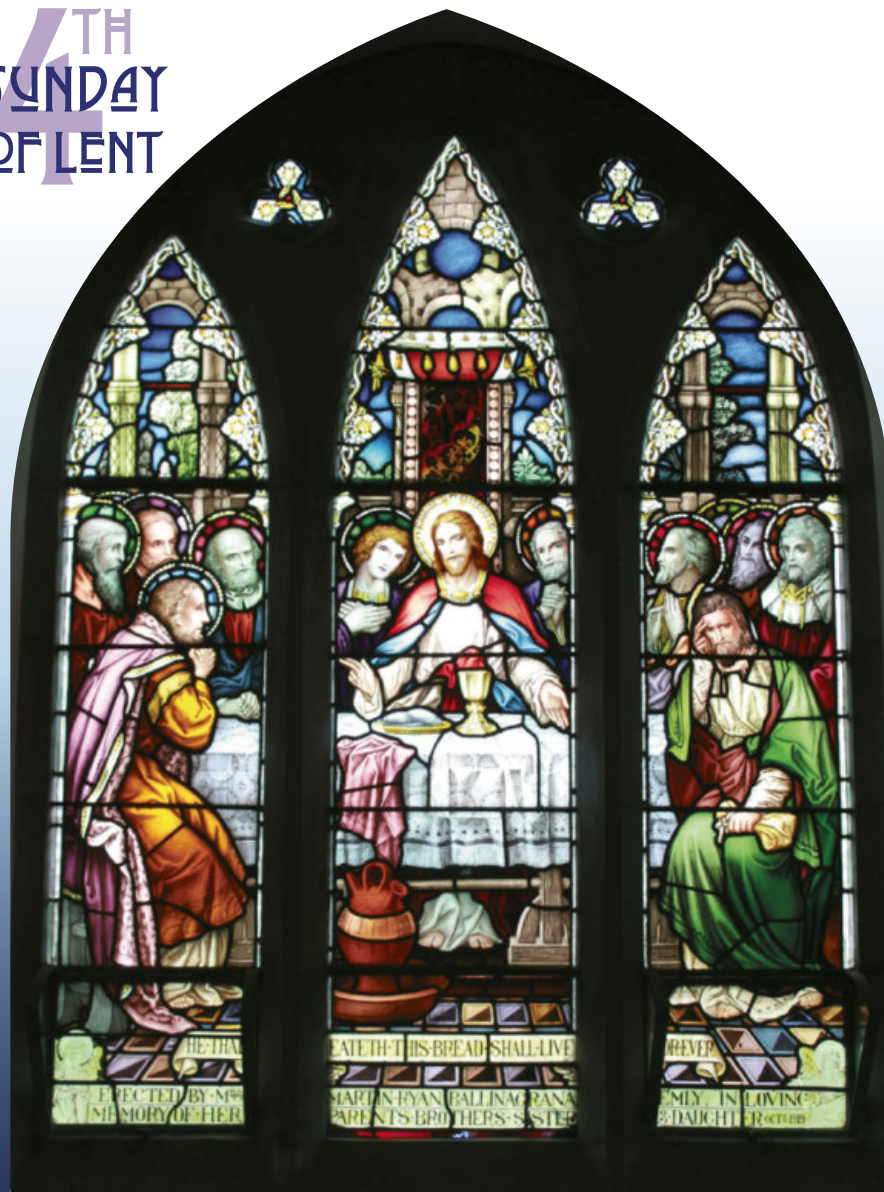
SAFE ENVIRONMENT

All employees and volunteers working with
minors are required to:

- Create an account at virtus.org
- Attend a Protecting God's Children
workshop
- Complete a mandated reporter training
- Submit to a background check
- Read the online Policy on Ethics and
Integrity in Ministry

For more Safe Environment information,
including reporting and victim resources,
see page 10.

4TH SUNDAY OF LENT



**TASTE AND SEE
THE GOODNESS OF THE LORD.** PSALM 34

NEXT SATURDAY, APRIL 5

**BLUE RIVER ROAD
CLEAN-UP**



SEE PAGE 4 FOR DETAILS



THE PASTOR'S PEN

Faithful People of Saint Thomas More,

This Sunday afternoon at 3pm, STM hosts "Haunted by God: The Life of Dorothy Day." We're very excited to host this event that puts on display the pursuit of God for each of us!

Next Saturday is the bi-annual clean up along Blue River Road, sponsored by the STM Green Team. The morning is a good opportunity to experience improving weather and help beautify part of our parish boundaries.

And thank you to the patience shown during the work on the church roof!

Father Justin

P.S. The church carpets will be cleaned this Monday, beginning shortly after the 9am Mass. The upper space will be unavailable for the following few hours (possibly until 3pm) for this spring cleaning.



Fresh Fire Eucharistic Adoration

Friday, March 28, 7-9pm

Fresh Fire is a prayer experience crafted to open hearts to experience Jesus' real presence in the Eucharist by combining candlelit Eucharistic Adoration throughout, with praise and worship music, a speaker offering personal witness, and opportunities to come to the altar for a blessing and intercessory prayer.

Small Group Studies

STM is hosting multiple small group studies focusing on the Sunday Gospels through Holy Week.

You are welcome to drop in on one of these groups:

Sundays, 2-3:30pm - Mike McFarland
Mondays, 4-5:30pm - Hayley Shaver
Tuesdays, 6-7:30pm - Hayley Shaver
Thursdays, 2-3:30pm - Patty Jo Williams

Registration and information

Hayley Shaver: hayley@stmkc.com
or 816-942-2492 x202.

REGISTER



\$20 for Lent

This year the collection benefits two local ministries. To give, scan the QR code, go to stmkc.com/20forlent, or use the envelopes in the pews.

St. Mary's Home for Mothers provides shelter for up to 15 homeless, pregnant women and their children. Visit them at stmaryshomeformothers.org/about-us/.

Hope Faith Ministries works to alleviate homelessness and poverty in KCMO. For details about this ministry, visit hopefaith.org/services.

To give, go to stmkc.com/20forlent.

READ MORE



DONATE

Morning Glory Ministry

Monday, March 31, 6:30-8:30am

Spots have been filled. Thank you!

The Seven Last Words of Jesus Christ

Friday, April 18, at noon in the church

Lenten CDs, Books and Care Notes

Remember these may be found in the narthex!

Lent 2025

Stations of the Cross

Fridays of Lent, 5pm in the Church

Stations of the Cross are led by a different STM ministry each week. You are also welcome to walk the journey with Jesus when the church is open, using the texts found by each station.

Parish ministries leading Stations of the Cross.

March 28	The Vocations Committee
April 4	STM School Staff
April 11	The Seven Sisters

Fish Fry Fridays

March 28; April 4 & 11, 5-7pm in More Hall

Dine in or get to-go! Menu: Baked and fried fish, fried shrimp, potatoes, corn, green beans, cole slaw and rolls. Cheese pizza and mac 'n cheese available for the kids. Cost: \$12/senior, \$15/adult, \$40/family. Desserts: \$2 each, provided by Girl Scouts.



Bulletin Deadlines

Bulletin	Due
April 6	Monday, March 31, by 5pm
April 13	Monday, April 7, by 9am
April 20	Monday, April 14, by 9am
April 27	Monday, April 21, by 5pm

Come Home to Communion



Daily Masses in Lent

Monday, 8:15am
 Tuesday, 6:15 & 8:15am
 Wednesday, 6:15 & 8:15am
 Thursday, 6:15 & 8:15am
 Friday, 8:15am
 Saturday, 8:15am

Sign Interpreted services: 2nd Sundays at 11am
Masses are recorded daily; find them at stmkc.com or youtube.stmkc.com.

Church Hours for Private Prayer

Mon.-Fri., 6am-9pm
 Sat.-Sun., 7am-9pm

The Light is on for You - Confessions in Lent

Confessions are offered in the reconciliation room.

Tuesday, 5-6pm Thursday, 5-6pm
 Saturday, 7:15-8am & 3-3:45pm
 and by appointment

Eucharistic Exposition at STM

Sundays, Noon-9pm in the Church

Regular time spent with the Lord in Adoration can be life changing! First Sundays, Noon-1pm, has music.

Pray the Rosary with Others

Sundays, after 9am Mass

Join with the Knights of Columbus in prayer.

Mon.-Fri., after the 8:15am Mass

All are welcome to pray the rosary or the Fatima devotions with others on first Saturdays, after 8:15am Mass.

Care & Support

Grief Peer Support Group

1st & 3rd Wed. (Apr. 2), 4-5pm, Bauman Room

Grief is difficult and can be experienced as a result of any kind of loss. In addition to supporting each other, we use various resources to better understand our grief. Peggy Lucas, Pastoral Associate, facilitates these groups. Attend as you are able. For more info, contact her at peggy@stmkc.com or 816-942-2492 x210.

Courage and Encourage Apostolates

Courage Kansas City is the local chapter of the Courage Apostolate. Spiritual support is offered to Christian men and women with same-sex attractions who desire to live chaste lives in accordance with the teachings of Scripture and Catholic moral teaching.

EnCourage offers support for families of those with same-sex attraction or gender dysphoria.

Monthly meetings are held at a location convenient for those throughout the KC metro area. Call 816-714-2371 if you are interested in either support group. Visit kcsjfamily.org/courage-encourage to learn more.

Please hold in prayer

CONTACT THE PARISH OFFICE, BULLETIN@STMKC.COM OR 942-2492 X202, TO ADD OR REMOVE NAMES FROM THE PRAYER LIST. IF YOUR NAME IS DROPPED OFF AND YOU ARE IN NEED OF ADDITIONAL PRAYERS FOR HEALING, CONTACT THE PARISH OFFICE. **NAMES APPEAR EVERY OTHER WEEK.**

...our family and friends in the military:

Thomas Edwards
 Seth Gulsby

Zacchary Henry
 John Hylander

Steve Janner
 Sarah Katz

Brian Owara
 Alycia Pouch

Nathan Pouch
 John P. Sullivan

...our parishioners who are sick:

Peggy Calhoun
 Carol Gretencord
 Iva Hamilton

Porter Hovey
 Lola Jacobs
 Carol Katzer

Carolyn Oberjuerge
 David Peterson
 Laura Rupp

Bill Swartz
 Nancy Swartz
 Kathy Vervaecke

Leonardo Viril
 Anita Wagner

...our family and friends who are sick:

Duane Brown
 Melinda Brown

Alissa Carter
 Joy Davie

Charles Haster
 Glen Horton

Julie Aguirre Johnson
 Richard Layton

Brian Robinson
 Lester Wells

Catholic Relief Services Collection

March 29-30

CRS works with organizations around the world to help poor and vulnerable people overcome emergencies, earn a living through agriculture, and access affordable health care. Your donations help provide humanitarian aid, resettle displaced individuals and families, and provide legal and advocacy services for migrants. Please visit crs.org to learn how you make a difference.

Blue River Road Clean up

Saturday, April 5, 9-11am

As part of the city-wide Blue River Clean Up Day, the Green Team invites people to help pick up trash along a 2-3 mile stretch of the road. Meet at 9am at the Minor Park tennis courts parking lot, located on Blue River Road, 1/2 mile south of Red Bridge Road. Dress appropriately: long-sleeved shirt, jeans, sturdy shoes, and gloves. In case of inclement weather, we will reschedule. Please RSVP to Peggy Lucas at peggy@stmkc.com by Wednesday, April 2.

Blingo

Saturday, April 5, at 6pm in More Hall

The Women of STM invite you to join them for a fun night of pizza, bingo (with "bling" prizes), and fellowship. Our guests will be the women from Journey and Peace Houses, residences for women recently transitioning from prison. Those of you who attended a Blingo event before know what a fun and uplifting evening this is! In conjunction with Blingo, we are sponsoring a household shower for Journey and Peace Houses.

• **Blingo prizes** are gently-used personal accessories - jewelry, scarves, purses, etc. - or new socks. Please bring your donated prizes when you come that evening.

• **Requested shower items are:** new twin bed linens (sheets, comforters, & pillows); new towels; mops & brooms; hygiene products (no trial sizes please); board games; picture frames. Again, bring when you come.

• **Food:** Pizza, salad, and dessert will be served along with water & lemonade. NOTE: This is a non-alcoholic event, but you are free to bring soft drinks and snacks to share. If you plan to eat, we ask for a \$5 donation. You are also invited to chip in another \$5 to help cover the cost for our Journey and Peace guests

• **RSVP:** Email wstm@stmkc.com. Questions? Contact Linda at 816-896-3129 or nhageman@msn.com.

Food Drive Next Weekend

April 6, in the Narthex

Our monthly food drive helps people who are struggling to put food on their tables and is distributed by Seton Center and our Red Bridge food pantry.

Please bring the following items for Seton Center: canned tuna, meats, low-sodium soups, vegetables and fruit; pancake mix & syrup, sugar, dry milk, boxed meals, pasta & sauce, peanut butter & jelly, rice, jello, condiments, white beans, laundry soap, toiletry items, and paper goods.

To make a monetary contribution to Seton Center, visit setonkc.org and click on the donate tab.

Red Bridge Pantry

We served 20 families with 63 folks this month, and we couldn't have done it without YOU! Thank you so very much for your generosity! **Special requests for April:**

- boxed meals (Hamburger Helper type), canned pastas, cereal, fruit cocktail, flour (5#), dry beans (1#)
- dish soap, laundry detergent (small), deodorant (men/women), shampoo, conditioner

(The dollar stores are a good resource for deodorant, dishwashing soap, and laundry detergent.)

STM Spring Blood Drive

Tuesday, April 8, 2-6pm in More Hall

There has been a critical shortage of blood supply this spring. Please take some time out of your busy lives to donate blood at the upcoming STM Blood Drive.

To sign up, email Linda at hdc635@aol.com, visit savealifenow.org or call the CBC at 816-753-4040. Walk-ins are welcome. Be sure to bring a photo ID. For medical eligibility questions call 1-800-688-0900.

Save the Date: Annual Men of STM Golf Tournament

Friday, May 2. 1pm Shotgun start, dinner afterwards.

Registration Link coming soon. Any questions? Please call Liam Cahill at 913-558-9835.

More details coming soon!

Contribution Envelopes

Thanks to those who called in to let us know they recently received double envelope packets. Our envelope company will be shipping envelopes on March 28 to those who did not receive them. If you have any questions or do not receive your MONTHLY envelopes soon, contact Joan Sandford. If you have received double envelopes, please recycle what you don't need.

February Financials

Regular - \$229,436.07 Plate - \$4,031.85

Facilities - \$1,015.00

Education Fund - \$15,405.00 School - \$633.05

Thank you for your continued contributions to STM!

Encountering THE SEASON

Lent for the Family

Fourth Sunday of Lent (C)

Joshua 5:9a, 10–12
2 Corinthians 5:17–21
Luke 15:1–3, 11–32

Dear Family:

This week, reflect on the theme of *resistance* as we journey with Mary and Jesus through the mounting tension surrounding his ministry. Dive into the reflection questions in the “Ponder and Pray” section, engage with the challenges in the “Live It” section, spend time with your family through the activity provided, and embrace the *visio divina* prayer exercise as we explore how Jesus and Mary face growing resistance.

Jesus and His Mother Ease Our Tension

As we enter the fourth week of Lent, the tension surrounding Jesus’ ministry intensifies. The Pharisees and scribes scoff at Jesus, attempting to trap him with his own words (see Luke 11:53–54). Their resistance to Jesus is rooted in pride and fear, and their hearts harden in the face of his message of mercy. While many embrace Jesus’ call, others resist the truth, rejecting the light he brings into the world.

Now imagine yourself standing beside Mary, watching this scene unfold. She witnesses the growing hostility directed at her Son. The tension is palpable as Jesus continues to preach, knowing he is walking toward rejection and suffering. Mary stands firm, with eyes fixed on

Jesus, her heart fully aligned with his mission. She does not turn away, even when resistance and mockery increase.

Mary teaches us how to resist the temptation to turn away from Christ when faced with division or fear. Her unwavering love for Jesus and her ability to stay present during moments of hostility remind us to keep our eyes

on him, no matter the tension around us. As we journey through this week, let us ask for the grace to resist fear, pride, and distraction, staying close to Christ, even when the path becomes difficult.

To read more about how Mary stood firm in the face of resistance, see *The Ascension Lenten Companion: Walking with Mary to Jerusalem*.

“If any one is in Christ, he is a new creation; the old has passed away, behold, the new has come.”
—2 Corinthians 5:17



Witness to Rabboni by Mike Moyers

Ponder and Pray

- How can Mary's unwavering trust in God during times of hostility inspire you to remain steadfast in your faith even when you face rejection or difficulty?
- In what areas of your life do you feel tempted to resist God's call? What might be holding you back from fully embracing his invitation?
- Were you ever misunderstood or mocked for your faith? How can you draw strength from Jesus and Mary to persevere in those moments?

Live It

This week, when faced with tension or resistance—from others or within yourself—pause and pray. Ask Mary to intercede with Jesus for you to help you resist the urge to pull away from Christ. Stay present in your prayer, in your Lenten practices, and in your relationships with others, even when things become difficult. Resistance is an opportunity to grow in faith and trust.

Visio Divina

Spend time reflecting on the image of the week. In this scene, Jesus is surrounded by a number of people, including Pharisees, as he shares his wisdom. Mary quietly observes from the background as she works, fully present in the moment, noticing everything.

Question 1:

What emotions arise as you reflect on Jesus teaching in the presence of those who both listen and resist? How does his calm presence amid tension speak to you?

Question 2:

Imagine yourself sitting at the table, listening to Jesus. What is he teaching you in this moment, especially as tension grows with those around him?

Question 3:

How does Mary's quiet, attentive presence in the background inspire you to remain faithful and observant in your own life, even when you are not at the forefront?

For free videos and downloadable resources featuring *Lenten Companion: Walking with Mary to Jerusalem* with Fr. Mark Toups, scan this code with your camera. This bulletin's reflection by Fr. Toups and "Family Fun" were adapted from *Lenten Companion*.



Fun for the Family

This week, as a family, create a "resistance challenge." Set up a simple obstacle course or activity where family members must push through small challenges (balancing, hopping, or holding a pose) to reach the end. Afterward, discuss how it felt to push through obstacles. Relate it to how we resist temptations or difficulties and how perseverance helps us grow stronger in faith.



Haunted By God: The Life of Dorothy Day

Sunday, March 30, 3-4:30pm, More Hall

An inspiring

one-woman dramatic portrait of one of the most outspoken and influential American Catholics of the 20th century. The production incorporates all the wit and prophetic grit of Dorothy's own words about war, peace, American society, compassion, and protest in the Spirit of Jesus.

This play is appropriate for those 13+ years of age.

About the actor

Lisa Wagner is the founder and director of Still Point Theatre Collective. She founded the company in 1993, motivated by a strong desire to combine ministry and theatre. For over fifteen years, she has toured the country and overseas with *Haunted by God: The Life of Dorothy Day*.

While researching the play, Lisa looked into the Catholic Worker Movement founded by Dorothy Day and met the St. Catherine of Genoa Catholic Worker community. After volunteering in the house for six months, she became a full-time Catholic Worker and lived in the community for two years.

Considering becoming Catholic?

Inquiry: Tuesdays, 6:15-7:30pm, More Hall A

Apr. 1: Forgiveness

Sessions are for those from other Christian traditions or those with no religious background. Catholics may also journey with other individuals to learn more about the Catholic Church and to discern God's invitations offered through the Catholic Church. Questions? Contact Father Justin, frjhoye@stmkc.com or 816-942-2492 x204.

Children's Liturgy of the Word (CLOW)

April 6 & 13, at 9am Mass

Children through 2nd grade are invited to participate in CLOW. In April, CLOW is offered on 1st & 2nd Sundays. Questions? Contact Joan Sandford, joan@stmkc.com or 816-942-2492 x202.

SPRED Class

Monday, April 7, 6:30-8:30pm, More Hall

An adult group for the developmentally delayed meets about every other week to share their faith. Questions? Email Becky at bturner727@yahoo.com.

Parish Calendar of Events

Fri., Mar. 28 - Stations of the Cross, 5pm, Church
 Scout Fish Fry, 5-7pm, More Hall
 Fresh Fire, 7-9pm, Church
 Sun., Mar. 30 - 4th Sunday of Lent
 Catholic Relief Services Collection
 OCIA 2nd Scrutiny, 11am Mass
 Lenten Small Group, 2-3:30pm, Bauman Room
 The Life of Dorothy Day, 3-4:30pm, More Hall
 Mon., Mar. 31 - STM Serves at Morning Glory, 6:30am
 Cleaning floors of Church, 9am-3pm
 Lenten Small Group, 4-5:30pm, Bauman
 Living Waters, 7-9:30pm, Church
 Tue., Apr. 1 - Lenten Small Group, 9-10:30am
 Lenten Small Group, 6-7:30pm
 OCIA, 6:15-7:30pm, More Hall A
 Wed., Apr. 2 - Feast of Saint Joseph
 Forgiveness Prayer Series, 1-2pm, Bauman Room
 Grief Peer Support, 4-5pm, Bauman
 School of Religion, 6:15-7:30pm
 Thu., Apr. 3 - Lenten Small Group, 2-3:30pm, Bauman

Choir Rehearsal, 7pm, Church
 Knights' Officer mtg., 7pm, Bauman Library
 Fri., Apr. 4 - Stations of the Cross, 5pm, Church
 Scout Fish Fry, 5-7pm, More Hall
 Sat., Apr. 5 - OCIA Retreat, 9am-Noon
 Blingo, 6pm, More Hall
 Sun. Apr. 6 - 5th Sunday of Lent
 Monthly Food Drive, Narthex
 Children's Liturgy of the Word, 9am Mass
 OCIA 3rd Scrutiny, 11am Mass
 Lenten Small Group, 2-3:30pm, Bauman Room
 Mon., Apr. 7 - Lenten Small Group, 4-5:30pm, Bauman
 STM serves at One City Cafe
 SPRED, 6:30-8:30pm, More Hall B/D
 Living Waters, 7-9:30pm, Church
 Tue., Apr. 8 - Lenten Small Group, 9-10:30am
 Blood Drive, 2-6pm, More Hall
 Lenten Small Group, 6-7:30pm
 OCIA, 6:15-7:30pm, More Hall A
 Wed., Apr. 9 - Forgiveness Series, 1-2pm, Bauman
 School of Religion, 6:15-7:30pm
 Thu., Apr. 10 - Lenten Small Group, 2-3:30pm, Bauman
 Choir Rehearsal, 7pm, Church
 Knights of Columbus, 7:15pm, More Hall
 Fri., Apr. 11 - Stations of the Cross, 5pm, Church
 Scout Fish Fry, 5-7pm, More Hall

STM School

Linda Crosthwait, Principal

816-942-5581 STMKSCHOOL.ORG



School Registration

New Families: Please email Jill Brennan for a tour and/or registration info: brennan_jill@stmcyclones.org.

MOScholars Tax Credit

Maximize your impact on Catholic education in Missouri, at no cost to you. You can redirect up to 50% of your state income tax liability to the Bright Futures Fund, providing vital scholarships to qualifying students in our diocese.

Here's how:

Estimate: Use your 2024 W-2 (boxes 16 & 17) to estimate your 2025 state income tax liability.

Reserve: Visit BrightFuturesFund.org and click "Reserve Your MO Tax Credits Here" (linking to the MO State Treasurer's website). Select "Bright Futures Fund" as your Educational Assistance Organization (EAO) and reserve up to 50% of your estimated liability.

Confirm & Contribute: You'll receive email confirmation from the state. Mail your check for the reserved amount to Bright Futures Fund, P.O. Box 419037, Kansas City, MO 64141, by December 31, 2025.

Claim: When filing your 2025 taxes in 2026, use the state's email confirmation and list on the MO-TC form to claim your 100% tax credit. You can also carry forward unused credits for up to four years.

Your tax dollars, already owed, can directly transform lives through Catholic education. Please call Christy at 816-714-2338 with questions.

School Dates

March 31-April 5 (Mon.-Sat.) - Glory Days
 Thu., Apr. 3 - Lenten Penance Service, 2-3pm
 Fri., Apr. 4 - Stations of the Cross, 2:30-3pm
 Dine Out Night at Sonic, 4-8pm
 Tue., Apr. 8 - Adoration, 2-3pm
 Home & School mtg., 6:30-8:30pm, More Hall

Dine Out Night: Cook Drinks & Cool Kids

Friday, April 4, 4-8pm

Support STM School by taking yourself and/or the family to Sonic on Red Bridge! Enjoy your favorite treat delivered by the students. Tips and a percentage of proceeds go to STM.



A FAMILY SPORTS SHOWDOWN AT STM!

VOLLEYBALL COMPETITION (MOMS)

- WHEN: MONDAY, MARCH 31 & WEDNESDAY, APRIL 2
- WHO: **MOMS**, PLAYING AT THE GRADE LEVEL OF THEIR OLDEST STM CHILD

BASKETBALL COMPETITION (DADS)

- WHEN: TUESDAY, APRIL 1 & THURSDAY, APRIL 3
- WHO: **DADS**, PLAYING AT THE GR

BRING YOUR CHAIRS AND STAY AFTER GAMES FOR DRINKS AND FELLOWSHIP!

ALL TEAMS FINALS

- WHEN: SATURDAY, APRIL 5
- WHAT: EVERY TEAM BATTLES IT OUT!

NEW THIS YEAR: SATURDAY NIGHT PARTY

- WHERE: SOUTHSIDE BAR & GRILLE (1144 W 103RD ST, KANSAS CITY, MO 64114)
- INCLUDED: LIGHT APPS & LIMITED BAR FOR ALL PLAYERS
 FEATURING: LIVE MUSIC BY THE JACKWAGONS + FINAL FOUR GAMES ON THE BIG SCREEN

COST: \$40 PER PLAYER
 (COVERS 3 GAMES + SATURDAY EVENT)

All Parish event! Don't have children in school? No problem. Join as a free agent!

Contact Jenny Smith (volleyball): jkalbsmith@gmail.com or
 Eric Gaughan (basketball): eric.gaughan@gmail.com for more information.

Parish Office Staff



Sharon Arnett
 Liturgy Coordinator
 x208 sharon@stmkc.com



Bob Sandford
 Publications & Music Director
 x212 bob@stmkc.com



Mary Begnaud
 Receptionist
 x201 mary@stmkc.com



Joan Sandford
 Office Manager
 x202 joan@stmkc.com



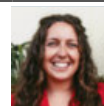
Scott Dulle
 Building & Grounds Director
 dulle_scott@stmcydones.org



Father Paul Sappington
 In Residence
 frsappington@smacatholic.org



Father Justin Hoyer
 Pastor
 x204 frjhoye@stmkc.com



Hayley Shaver
 Evangelization & Discipleship
 x223 hayley@stmkc.com



Jyllan Hudson
 Funeral & Wedding Liturgist
 jyllan@stmkc.com



Tim Waris
 Business Manager
 x218 tim@stmkc.com



Becky Johnson
 Finance Coordinator
 x224 becky@stmkc.com



Father Pius Wesonga, AJ
 Associate Pastor
 x203 frpwesonga@stmkc.com



Peggy Lucas
 Pastoral Associate/Outreach
 x210 peggy@stmkc.com

Parish Office Hours (until further notice)

Office Hours: M-W 8:45am-3:30pm; T-Th 8:45am-5pm
 F 8:45am-1pm

Finance Ministry Team

Justin Hicks, Chair
 Mark Meierhoffer
 Bruce Gregg

Stefanie Bresette
 Laura Christopherson

Parishioner volunteers serve for three-year terms.
 Questions? Email FinanceCouncil@stmkc.com.



Diocesan Ombudsman

Joe Crayon crayon@ombudsmankcsj.org or
 816-812-2500

Victim Advocate

816-392-0011 or victimadvocate@diocesekcsj.org

To register as a member of Saint Thomas More Parish...

...go to stmkc.com/registration, contact the parish office or pick up a registration form on the Information table in the church narthex.

Safe Environment Information

The Diocese of Kansas City~Saint Joseph is committed to combatting sexual abuse in the Church. If you are a victim of sexual abuse, or if you *observe or suspect* sexual abuse:

- Call the **MO Child Abuse Hotline**, 1-800-392-3738 (if the victim is currently under the age of 18), or **KS Protection Report Center**, 1-800-922-5330, and
- Contact your **local law enforcement agency** or call 911, and
- After reporting to these civil and law enforcement authorities...if the abuse involves a priest, deacon, employee or volunteer of the Diocese of Kansas City~St. Joseph report suspected abuse to the Diocesan Ombudsman, Joe Crayon, at 816-812-2500 or crayon@ombudsmankcsj.org.

The diocese has a sincere commitment to providing care and healing resources to victims of sexual abuse and their families. Please contact the Victim Advocate at 816-392-0011 or victimadvocate@diocesekcsj.org.

FOR ADDITIONAL INFORMATION, contact:

Joan Sandford, Parish Safe Environment Coordinator, safety@stmkc.com or 816-942-2492 x202, OR

Tracy Stewart, School Safe Environment Coordinator, stewart_tracy@stmcyclones.org or 816-942-5581.

Mass Intentions

Mon:	8:15AM	Mary Schwartz [†]
3/31		
Tues:	6:15AM	John Redmond[†]
4/1	8:15AM	Susana Munoz [†]
Wed:	6:15AM	Ivan & Carol Katzer
4/2	**8:15AM	Bernice Rosewicz[†]
Thur:	6:15AM	Anthony & Theresa Manzella[†]
4/3	8:15AM	Franki Jo Katzer [†]
Fri:	8:15AM	Pat, Andy & LaVonne Klein[†]
4/4		
Sat:	8:15AM	Dick Young[†]
4/5	4:00PM	Mary Sue Karl [†]
Sun:	7:30AM	Tom & Angela Cerami[†]
4/6	9:00AM	Our Parishioners
	11:00AM	Melissa Ludwig[†]

[†] Deceased

****School Mass**

To request a Mass intention, stop by the parish office or call 816-942-2492. Suggested donation per Mass is \$10.

SCRIPTURE READINGS

For the daily readings, visit usccb.org/bible/reading. Have the readings sent to your email each day, hear the readings read to you, or watch a video with a reflection based on the readings.

 <p>TJ BRENNAN - Parishioner 816.394.2224 • HOME • AUTO • BUSINESS • LIFE tjbrennan@cekinsurance.com www.cekinsurance.com</p>	<p>WE APPRECIATE OUR ADVERTISERS!</p>	<p>The Genuine. The Original. OVERHEAD DOOR Overhead Door Company of Kansas City™ A SPACE Company</p>
 <p>SUPPORT OUR PARISH</p>		
 <p>Brady Crawford Insurance & Financial Services 816.333.5853 coveredbycrawford.com Locations in Waldo & Martin City</p> <p>RENTERS HOMEOWNERS CONDO AUTO PET PERSONAL ARTICLES BUSINESS LIFE HEALTH</p>	<p>FREE AD DESIGN with purchase of this space CALL 800-477-4574</p>	<p>SERVING KANSAS CITY SINCE 1927 REPAIR + REPLACE GARAGE DOORS AND OPENERS RESIDENTIAL DOORS FREE ESTIMATES • 816-320-5430 OverheadDoorKansasCity.com</p>
<p>IF YOU LIVE ALONE MDMedAlert!™ As Low As \$19⁹⁵ /mo. ✓ Ambulance ✓ Police/Fire ✓ Family/Friends ✓ GPS & Fall Alert CALL NOW! 800.808.9294 md-medalert.com</p>	<p>SHORT STAFFED? Place an ad here to find new local talent for your business. CALL 800-477-4574</p>	 <p>Office: 913-722-6200 Cell: 913-269-7124 julie@juliestoll.com Julie Stoll State Farm Agent</p>



For ad info. call 1-800-950-9952 • www.4lpi.com

St. Thomas More, Kansas City, MO

C 4C 02-0710

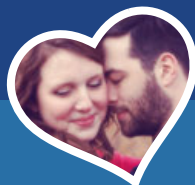


A Fresh and Polished Approach to Oral Health

4851 WEST 134TH STREET • LEAWOOD • KANSAS 66209-7803
913.681.8300 • WWW.JEFFTHOMPSONORTHOD.COM

JEFFREY J. THOMPSON, D.D.S., M.S.
DIPLOMATE AMERICAN BOARD OF ORTHODONTICS

catholicmatch®
Missouri



CatholicMatch.com/MO



WALK-IN CLINIC
for sports injury or fractures

M-F: 9am -11am, 1pm - 3pm. Ages 0 -16

**pediatric orthopaedic
surgery Associates**

5250 W. 94th Terrace, Prairie Village, KS 66207

913-451-0000

www.pedorthokc.com

Like a good neighbor **State Farm**
State Farm is there.®



13012 Fuller
P.O. Box 230
Grandview, MO 64030

STATE FARM INSURANCE COMPANIES
HOME OFFICES BLOOMINGTON, ILLINOIS

Larry B. Langford,
CLU CHFC

Bus.: 816-761-8711
Res.: 816 217 8112

larry.langford.b5u9@statefarm.com



RE/MAX®

State Line Real Estate



Tina R. Gaughan
REALTOR®, SRES

Direct Line: (913) 312-3630

Mobile: (816) 835-3230

TinaGaughan@gmail.com

TinaGaughan.com

11251 Nall Ave. • Leawood, KS 66211

Each Office Independently Owned and Operated



WILLS & TRUSTS • ESTATE PLANNING

Christopher Gaughan, Parishioner
ESTATE PLANNING ATTORNEY

- Estate Planning
- Business Succession
- Wills & Living Trusts
- Powers of Attorney
- Farm & Ranch Planning
- Special Needs Trusts

CALL FOR A FREE CONSULTATION!



GAUGHAN & CONNEALY
ESTATE PLANNING ATTORNEYS
4400 College Blvd, Suite 190 | Overland Park, KS 66211
(913) 262-2000 | www.MidwestEstatePlan.com

WE'RE HIRING!

AD SALES EXECUTIVES

BE YOURSELF.
BRING YOUR PASSION.
WORK WITH PURPOSE.

- Paid training
- Some travel
- Work-life balance
- Full-Time with benefits
- Serve your community



Contact us at
careers@4lpi.com or
www.4lpi.com/careers

learn.
grow.
soar.

**FORMING MEN AT
THE ROCK**

ROCKHURST HIGH SCHOOL

WWW.ROCKHURSTHS.EDU/ADMISSIONS



**Catholic Family
CREDIT UNION**

Full Service For All Your Needs
816-444-7440

9237 Ward Parkway, Ste 114

www.catholicfamilycu.com

Savings Insured by the NCUA up to \$250,000



PILEGGI PAINTING

Exterior - Interior - Decks - Residential & Commercial

Frank Pileggi - Owner

www.PileggiPainting.com

frank@pileggipainting.com | 913-558-5204

LET'S GROW YOUR BUSINESS

Place Your Ad Here
and Support Our Parish!

**CONTACT ME
Jon Becker**

jbecker@4LPi.com
(800) 950-9952 x2536

**DOES YOUR NONPROFIT
ORGANIZATION NEED
A NEWSLETTER?**

Engaging, ad-supported
print and digital newsletters
to reach your community.

Visit lpicomunities.com

**OUR COMMUNITY
NEWSLETTER**
OCTOBER EDITION



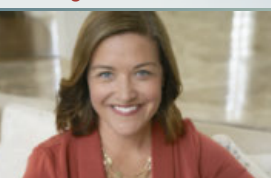
Scan to
contact us!



URGENT CARE
AT HOME

In home evaluations and
treatments helps you skip the
wait and get the care you need,
when and where you need it.

Meghan Macy
FNP-BC, APRN, NE
(816) 223-7638
www.urgentcareathomekc.com



Mary Owens Boesen
Parishioner
Life & Health Insurance Sales

MEDICARE

Let me help you! 30 years experience

816-942-0666 • mboesen@kc.rr.com



Tran Tax

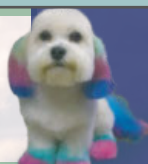
13035 B Holmes Rd.
(816) 575.7725 | trantax.com

STRATEGY » ADVANTAGES » EXPERIENCE

Old Mill Grooming

Let us pamper your pet

(816) 941.8484 | 13031 Holmes Rd.



mind • body • spirit

Thai Spring Massage

913-279-8824

13035 Holmes Rd, Suite C. Kansas City, MO 64145

10am - 9pm • Walk-in Welcome



For ad info. call 1-800-950-9952 • www.4lpi.com

St. Thomas More, Kansas City, MO

B 4C 02-0710



Buy one Breakfast, Lunch or Dinner Combo meal
and get one of equal or lesser value **FREE**

Limit one coupon per customer per visit. Please present coupon when ordering.
Not valid with any other offer. Expires April 30, 2026
Code 0710

24 Highway McDonald's
11700 East US Highway 24
Independence, MO
Eastland McDonald's
18910 East US Highway 40
Independence, MO
Susquehanna McDonald's
16235 East US Highway 24
Independence, MO

BR Crossing McDonald's
11801 East US Highway 40
Independence, MO
40 Highway McDonald's
920 SW US Highway 40
Blue Springs, MO
North 7 McDonald's
814 NW State Route 7
Blue Springs, MO

REDEEMABLE ONLY AT:
Woods Chapel McDonald's
1515 NW Woods Chapel Rd
Blue Springs, MO
South 7 McDonald's
3116 South 7 Highway
Blue Springs, MO
Chouteau McDonald's
4400 N Chouteau Traffic Way
Kansas City, MO

Broadway McDonald's
3741 Broadway Boulevard
Kansas City, MO
Red Bridge McDonald's
11001 Hickman Mills Drive
Kansas City, MO
Blue Ridge McDonald's
5260 Blue Ridge Boulevard
Raytown, MO

Carpets | Area Rugs | Upholstery
Hardwood Floors | Air Ducts
Tile & Grout | Residential/Commercial

WE CLEAN GREEN! **zerorez**
The Right Way to Clean

(816) 425-3655
www.zerorezkc.com Steven Phelps

Better Homes and Gardens REAL ESTATE **KANSAS CITY HOMES**

Judy Sheaman, ABR
Sales Executive with 26 Yrs. Experience
Parishioner
Licensed in Kansas & Missouri

Office: 913-981-2827
Cell: 816-304-2888
KC Magazine
"Five Star Real Estate Agent"
for overall customer satisfaction since 2005

Owen LUMBER CO.

KC's Leading Decking & Andersen Window Supplier
Mike McGlinn
Parishioner

816-331-2211 OwenLumber.com

ALLIED CONCRETE PRODUCTS
12800 2nd St. Grandview
816-966-8836
Judy, Pete, & Amparo Furey
Parishioners

RESIDENTIAL SEWAGE TREATMENT COMPANY, INC.
12800 2nd St. Grandview
816-966-8885
Kathy Maguire & Tom Fritts
Parishioners



LET'S GROW YOUR BUSINESS
Place Your Ad Here and Support Our Parish!

CONTACT ME Jon Becker
jbecker@4LPi.com • (800) 950-9952 x2536

MCGILLEY MEMORIAL CHAPELS SINCE 1899

Funerals | Cremations | Receptions | Celebrations
"Celebrating Lives"

Patrick McGilley | Joe Haster | **816-942-6180** | www.mcgilleystatelinechapel.com

The Madison SENIOR LIVING

Learn more about life at The Madison!

Schedule a Tour | (816) 327-1726

Muehlebach Funeral Care & Cremation Services

MUEHLEBACH FUNERAL CARE

816-444-2060
www.muehlebachchapel.com
"Our Family Dedicated to Serving Yours."

Parishioners:
Steve & Nicole Pierce
Jordan Pierce
STM Class of 2011
Jenny Mertes
Tom Reagan

LINC Local Investment Commission

Part-time Child Care Jobs Now Hiring!

Apply at: kclinc.org/parttimejobs
LINC Caring Communities Sites
North Kansas City - Kansas City Public Schools
Center - Hickman Mills - Grandview

Your financial partner throughout your life.

Matthew Pomianek, AAMS*, Financial Advisor, Parishioner
5000 W 95th St Ste 103
Prairie Village, KS 66207
913-648-6084
matthew.pomianek@edwardjones.com

Member SIPC
Edward Jones
MAKING SENSE OF INVESTING

got crack? WE GOT YOUR BACK!

CRACKOLOGY
FOUNDATION REPAIR & WATERPROOFING

Call us! **816-402-2217**

WE APPRECIATE OUR ADVERTISERS!

ACCESS YOUR POTENTIAL

AVILA UNIVERSITY
Avila.edu/catholic

• Auto
• Home
• Life
• Commercial

We are an Independent Agency With Over 30 Years of Experience

NESTEL INSURANCE AGENCY
"Where Customer Service Counts"

Mary Nestel
816-361-6442
9233 Ward Parkway Ste 124
Kansas City, MO 64114

www.nestelinsurance.com
info@nestelinsurance.com

JOE & MAGGIE TULIPANA

SHAWNEE
13214 W 62ND TERR, SHAWNEE, KS 66216

VILLAGE WEST (INSIDE NEBRASKA FURNITURE MART)
1601 VILLAGE WEST PKWY, KANSAS CITY, KS 66111

WE CATER! 913.268.488Q
catering@blindboxbbq.com

BLIND BOX BBQ
BLINDBOXBBQ.COM

BURIAL • ENTOMBMENT • CREMATION • TRADITIONAL CEREMONIES • CELEBRATIONS OF LIFE

CULLEN FUNERAL HOME, INC.

612 W Foxwood Dr
Raymore, MO 64083
(816) 322-5278

PLAN AHEAD
WE'LL TAKE THE FIRST STEP WITH YOU.