



OUR **MISSION** IS TO PROVIDE  
A WELCOMING, INCLUSIVE,  
AND LOVING COMMUNITY BY  
PROCLAIMING AND LIVING GOD'S  
WORD THROUGH WORSHIP,  
EDUCATION, AND SOCIAL JUSTICE.

## SAINT THOMAS MORE PARISH

11822 Holmes Road, Kansas City, Missouri 64131 • stmkc.com

April 6, 2025



### BULLETIN ONLINE

this and last week's at stmkc.com

Subscribe at stmkc.com/emailme→



### MASSES IN LENT

WEEKDAY: Mon-Sat, 8:15am,

Tues, Wed, Thu 6:15am

WEEKEND: Sat 4pm, Sun, 7:30am, 9am & 11am

MASS ONLINE CONTINUES

### RECONCILIATION IN LENT

Individual Confessions by appointment and  
Tuesdays and Thursdays, 5-6pm  
Saturdays, 7:15-8am, 3-3:45pm

### OUR CLERGY

Father Justin Hoye, Pastor

Father Pius Wesonga, AJ, Associate Pastor

In Residence: Father Paul Sappington

### AT THE PARISH OFFICE

Office Hours:

Mon. & Wed. 8:45am-1pm, 2-3:30pm\*

Tues. & Thurs. 8:45am-1pm, 2-5pm\*

Friday 8:45am-1pm

\* lunch hour 1-2pm

Parish Office 816-942-2492

Office directory at stmkc.com and p.9

### AT THE SCHOOL OFFICE

Linda Crosthwait

Principal

Tracy Stewart

Assistant Principal

Office hours: Mon.-Thurs., 8am-3:45pm;

Fri., 8:30am-3:30pm

School Office 816-942-5581

School fax 816-941-2450

School email directory at stmkschool.org

SCHOOL TOURS: contact Principal Linda Crosthwait at  
816-942-5581 or crosthwait\_linda@stmcydones.org

### SAFE ENVIRONMENT

All employees and volunteers working with  
minors are required to:

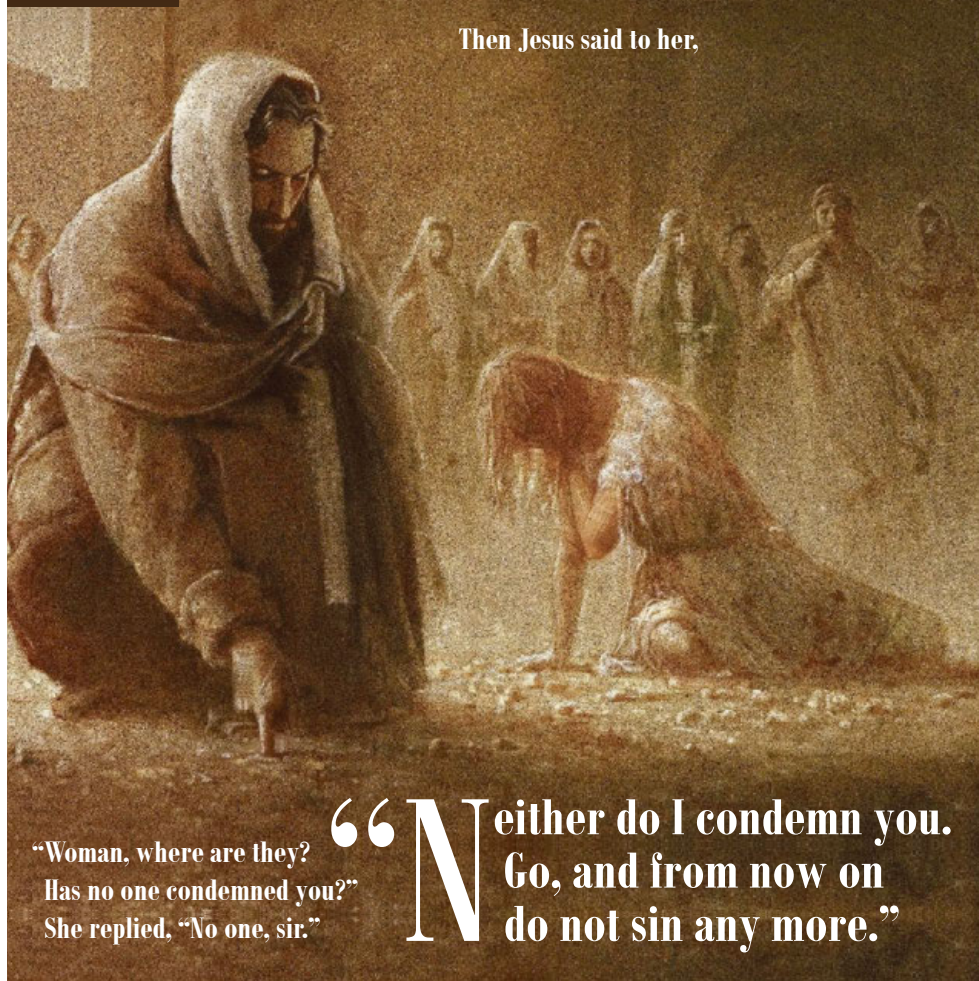
- Create an account at [virtus.org](https://virtus.org)
- Attend a Protecting God's Children workshop
- Complete a mandated reporter training
- Submit to a background check
- Read the online Policy on Ethics and Integrity in Ministry

For more Safe Environment information,  
including reporting and victim resources,  
see page 10.

### 5TH SUNDAY OF LENT

“Let the one among you who is without sin  
be the first to throw a stone at her.”  
...they went away one by one...

Then Jesus said to her,



“Woman, where are they?  
Has no one condemned you?”  
She replied, “No one, sir.”

“Neither do I condemn you.  
Go, and from now on  
do not sin any more.”

### ST. THOMAS MORE CHURCH

## Easter EGG HUNT



### EASTER SUNDAY, APRIL 20

IMMEDIATELY FOLLOWING 9 AM MASS ON THE  
ST. THOMAS MORE SCHOOL PLAYGROUNDS

ALL CHILDREN THROUGH AGE 10 WELCOME  
SEPARATE EGG HUNT FOR SMALLEST CHILDREN



Faithful People of Saint Thomas More,

Many things to note this week!...

**Church Roof:** Our church roof replacement wrapped up this week, after less than three weeks of work. Thank you for the patience shown to get this project done ahead of spring rains.

**Dorothy Day Play:** We had a wonderful turn-out (60) at last Sunday's performance of "Haunted by God: The Life of Dorothy Day," an overview of a 20th Century American woman whose cause is up for canonization. There are two aspects of her life that are worth mentioning for our own spiritual good:

+ **Abortion.** Unmarried and eager to maintain her relationship with her suitor, Dorothy had an abortion early in life. Encouraged later - in a second relationship - to follow suit with an unplanned pregnancy, Dorothy knew the pain of abortion and rejected it as an option this second time. That second child's birth (Tamar) precipitated Dorothy's entrance into the Catholic Church.

The Church is always conveying the mercy of God to those who have been touched by abortion, whether with intense proximity (a parent or worker at an abortion clinic) or those who might experience collateral effects (siblings, grandparents, and friends). There are two opportunities for healing just this month here in Kansas City, listed on page 3. If you've been impacted by abortion, know that the Church is eager to extend Jesus' compassion to you, and help you know the freedom that comes from forgiveness and understanding. Like for Dorothy, God can use such a painful event to draw us more deeply into his love.

+ **Poverty.** One of my favorite lines from Dorothy's life - and recited in the play: "It is easier to love when we have resigned ourselves to poverty." The freedom to detach, and to enter into poverty when we have other options, is not a gift that everyone receives. For some, their poverty is forced on them and remains not something chosen but something to be borne in its complicated heaviness.

We have a robust offering of care STM offers consistently offsite (One City Cafe, reStart, Uplift,

Morning Glory, to name just a few of our monthly offerings), as well as our \$20 for Lent collections for St. Mary's Home for Mothers and Faith Hope Ministries. AND, we are also meeting the needs of people who show up on our own campus doorstep. Our Neighbors in Need fund allows us to offer assistance to those who approach us directly, providing grocery gift cards, fuel, emergency housing, utilities, rent and mortgage assistance. Staff or volunteers meet with each Individual, and we use an online vetting system used by many non-profits who work in the area of social services, (as well as working directly with landlords and utility companies).

While we are helping about the same amount of families/individuals per quarter, we are averaging \$100 more per engagement than we were just a year ago (\$379 to now \$479, on average). In this season of almsgiving, if you have any additional funding that you might provide to our **Neighbors in Need** fund, know that such a move would honor the observation of Dorothy Day: that entering into some impoverishment in our own lives frees us to love with greater ease.

**STM School Enrollment for 2025-26:** As of this week, a waiting list now exists for first grade. We currently have 363 enrolled (registered with fees paid) for the 2025-26 academic year. (To give some norms: at this time last year, we had 361 enrolled, and 372 the year before that.)

**Liturgical Notes Ahead of Holy Week:** This Thursday is Chrism Day for the priests, when we gather with Bishop Johnston for a half-day of spiritual reflections and a recommitment to our ordination promises. Due to our gatherings, there will be no Thursday evening confessions this week.

**This Friday** we will begin to remove the unlit votive candles from the Mary & Joseph devotional area. Lit candles will be removed once they have burned out. Crucifixes and statues are also covered. This prepares us ahead of the Triduum, when we intensify our entry into Jesus' passion with shrouding and darkening in the church.

**Next weekend is Palm Sunday**, initiating the holiest week of the Christian year. Our 4pm Mass will begin with the blessing of the palms, out in the narthex, followed by a procession into the church. (The Sun-



day morning Masses will all begin in the church as usual.) We will have a special offering of Children's Liturgy of the Word (CLOW) at the 9AM Palm Sunday Mass, so that children can enter more deeply into this sensory event. Please participate in our holy week offerings to the extent that you are able, as they help us rekindle the remembrance of what God gifts us in the person of Jesus Christ.

Father Justin

**P.S. Traveling Vocations Crucifix This Easter:** Our STM Vocations Committee is once again promoting a traveling Vocations Crucifix for the Easter Season. At every weekend Mass, beginning on Easter Sunday, an individual or family will be on for A) bringing the gifts of bread and wine to the sanctuary, at the preparation of the gifts, and B) receiving at that transaction a traveling crucifix to take home for the week. Prayers are included with each kit, to help our community honor and pray for an increase in religious vocations in our community. Parishioners can sign up for a Mass at [stmkc.com](http://stmkc.com) and click on the Traveling Vocations Crucifix button.

### Two Post-Abortion Retreat Opportunities This Month (April 25-27)

**Rachel's Vineyard:** Weekend retreats offer a supportive, confidential, and nonjudgmental environment where women and men can express, release, and reconcile painful post-abortive emotions to begin the process of restoration, renewal and healing. Contact [rvkcmo@gmail.com](mailto:rvkcmo@gmail.com), 816-679-4973.

**Found & Woven:** The power-packed, focused retreat allows time to advance the healing journey. Scripture, music, drama and creative expression are utilized in groups and individual time to assist in the process of dismantling all the walls that keeps the abortion-wounded in bondage. Contact 816-847-2911 or [info@foundandwoven.com](mailto:info@foundandwoven.com).

### Bulletin Deadlines

Bulletin	Due
April 13	Monday, April 7, <b>by 9am</b>
April 20	Monday, April 14, <b>by 9am</b>
April 27	Monday, April 21, <b>by 5pm</b>

## Lent 2025



### Stations of the Cross

#### Fridays of Lent, 5pm in the Church

April 4	Led by STM School Staff
April 11	Led by The Seven Sisters

### Fish Fry Fridays

#### April 4 & 11, 5-7pm in More Hall

Dine in or get to-go! Cost: \$12/senior, \$15/adult, \$40/family. Desserts: \$2 each, provided by Girl Scouts.

### \$20 for Lent

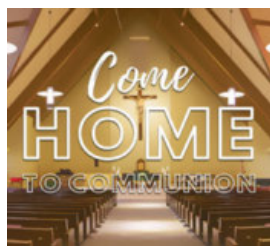
This year the collection benefits St. Mary's Home for Mothers and Faith Hope Ministries. To contribute, use the envelopes in the pews or go to [stmkc.com/20forlent](http://stmkc.com/20forlent).

### The Seven Last Words of Jesus Christ

#### Friday, April 18, at noon in the church



## Come Home to Communion



### Daily Masses in Lent

Monday, 8:15am
Tuesday, 6:15 & 8:15am
Wednesday, 6:15 & 8:15am
Thursday, 6:15 & 8:15am
Friday, 8:15am
Saturday, 8:15am

**Sign Interpreted services:** 2nd Sundays at 11am

**Masses are recorded daily;** find them at [stmkc.com](http://stmkc.com) or [youtube.stmkc.com](http://youtube.stmkc.com).

### Church Hours for Private Prayer

Mon.-Fri., 6am-9pm
Sat.-Sun., 7am-9pm

### The Light is on for You - Confessions in Lent

Confessions are offered in the reconciliation room.

Tuesday, 5-6pm	Thursday, 5-6pm (not 4/10)
Saturday, 7:15-8am & 3-3:45pm	
and by appointment	

## Eucharistic Exposition at STM

**Sundays, Noon-9pm in the Church**

**No Eucharistic Exposition on Easter Sunday.**

## Pray the Rosary with Others

**Sundays, after 9am Mass**

Join with the Knights of Columbus in prayer.

**Mon.-Fri., after the 8:15am Mass**

All are welcome to pray the rosary or the Fatima devotions with others on first Saturdays, after 8:15am Mass.

## Care & Support

### Grief Peer Support Group

**1st & 3rd Wed. (Apr. 16), 4-5pm, Bauman Room**

Grief is difficult and can be experienced as a result of any kind of loss. In addition to supporting each other, we use various resources to better understand our grief. Peggy Lucas, Pastoral Associate, facilitates these groups. Attend as you are able. For more info, contact her at [peggy@stmkc.com](mailto:peggy@stmkc.com) or 816-942-2492 x210.

*One Family* RESTORED IN CHRIST, EQUIPPED FOR MISSION



Using Resources Wisely

*Aligning God's gifts for the Church's life and mission*

### Blue River Road Clean up

**Saturday, April 5, 9-11am**

Meet at 9am at the Minor Park tennis courts parking lot on Blue River Road. Dress appropriately: long-sleeved shirt, jeans, sturdy shoes, and gloves. In case of inclement weather, we will reschedule.

### Blingo

**Saturday, April 5, at 6pm in More Hall**

The Women of STM invite you to join them for a fun night of pizza, bingo (with "bling" prizes), and fellowship. Our guests are the women from Journey and Peace Houses, residences for women recently transitioning from prison. In conjunction with Blingo, we are sponsoring a household shower for Journey and Peace Houses. Please bring Blingo prizes and shower items with you when you come...and \$5 for pizza. Questions? Call Linda at 816-896-3129.

### Food Drive This Weekend

**April 6, in the Narthex**

*Our monthly food drive helps people who are struggling to put food on their tables and is distributed by Seton Center and our Red Bridge food pantry.*

Please bring the following items for Seton Center: canned tuna, meats, low-sodium soups, vegetables and fruit; pancake mix & syrup, sugar, dry milk, boxed meals, pasta & sauce, peanut butter & jelly, rice, jello, condiments, white beans, laundry soap, toiletry items, and paper goods.

**To make a monetary contribution to Seton Center,** visit [setonkc.org](http://setonkc.org) and click on the donate tab.

### Red Bridge Pantry - Special requests for April

- boxed meals (Hamburger Helper type), canned pastas, cereal, fruit cocktail, flour (5#), dry beans (1#)
  - dish soap, laundry detergent (small), deodorant (men/women), shampoo, conditioner
- (The dollar stores are a good resource for deodorant, dishwashing soap, and laundry detergent.)

### STM Spring Blood Drive

**Tuesday, April 8, 2-6pm in More Hall**

The blood supply collected from our donors directly serves the needs of patients in our local hospitals. This spring the blood supply has been at critically low levels. Please come donate blood.

To sign up, email Linda at [hdc635@aol.com](mailto:hdc635@aol.com), visit [savealifenow.org](http://savealifenow.org) or call the CBC at 816-753-4040. Walk-ins are welcome. Be sure to bring a photo ID. For medical eligibility questions call 1-800-688-0900.

### Five Years of Recorded Masses

STM has passed our five year mark of recording Masses daily, having started in late March of 2020. A special thanks to Craig Laird and Joan Sandford (who both began recording in 2020), Nancy Sciortino, Rae Lynn Vittorino, Tarah Arndt, Michael & Kevin Gaughan (our youngest members), and Will Dreiling who are on our current recording team!

New members--high school and older--are welcome, can work in pairs, and are given hands-on training as long as they like! Each month, team members choose their own times/days to record according to their personal schedule. If interested in training or to see how we record, contact Joan Sandford at [joan@stmkc.com](mailto:joan@stmkc.com) or 816-942-2492. Tech experience is helpful but not required. 100-200 people continue to watch online Masses daily!

### Knights of Columbus Texas Hold 'Em Tournament

**Friday, April 25, 7pm in More Hall**

Registration at 7pm; play begins at 7:30pm.

ALL are welcome. Proceeds benefit STM School Computer Fund.

Cash Prizes - 1st \$300 - 2nd \$200 - 3rd \$100

Buy-In: \$30 Pre-Registered - \$35 Walk-In

To pre-register, email [kcmarkus@sbcglobal.net](mailto:kcmarkus@sbcglobal.net) or call 816-213-9375.



# Encountering THE SEASON

Lent for the Family

Fifth Sunday of Lent (C)

Isaiah 43:16–21

Philippians 3:8–14

John 8:1–11

## Dear Family:

This week, we focus on *obedience* as we accompany Jesus and Mary during this crucial part of the Lenten journey. Read the reflection questions in the “Ponder and Pray” section, explore the challenges in the “Live It” section, and enjoy the family activity. Engage in *visio divina* to contemplate how Mary and Jesus teach us the importance of obedience and trust in God’s plan.

## Obedience Requires Trust Amid Turmoil

As we enter the fifth week of Lent, the journey to Jerusalem grows more intense. In Luke 18:31, Jesus tells his apostles that everything written about him by the prophets will be fulfilled. He will be delivered, mocked, scourged, and killed. But on the third day, he will rise again. These words hold a heavy weight as Jesus prepares to face his Passion, and those closest to him—Mary and the apostles—walk with him in quiet obedience.

Mary, who has always trusted in God’s will, remains by Jesus’ side, ready for whatever lies ahead. Her obedience is not passive; it is an active, loving response to God’s call. She has taught us how to say “yes” to God in every moment, from the Annunciation to now. Even as the tension mounts and the

threat of suffering grows, Mary trusts that God’s plan is unfolding perfectly.

Imagine walking alongside Mary and hearing Jesus tell of his death and Resurrection. As his words sink in, Mary turns to you and asks, “Are you ready for this part of the journey?” Obedience like Mary’s requires trust in the midst of uncertainty, even turmoil. It asks us to surrender our plans, our fears, our understanding, and follow where God leads.

As we prepare for this Holy Week, let us ask for the grace to be obedient to God’s will. Like Mary, may we walk with courage and trust, knowing that God’s plan, though it may lead through suffering, ultimately leads to resurrection and new life.

To read more about how Mary embodies radical obedience, see *The Ascension Lenten Companion: Walking with Mary to Jerusalem*.

“ The LORD has done great things for us; we are glad. ”  
—Psalm 126:3



Wedding at Cana by Mike Moyers

## Ponder and Pray

- Mary said at Cana, “Do whatever he tells you” (John 2:5). How will you apply this call to obedience in your life? What might Jesus be asking you now?
- When have you hesitated to trust in God’s plan? Will you follow Mary’s example of stepping forward in faith, even when the path is unclear?
- Do you notice God’s quiet miracles in your life, similar to the transformation at Cana? Try to cultivate greater gratitude for these moments.

## Fun for the Family

Create a “Follow the Leader” activity—with a twist!

Choose one family member to lead, and have everyone else follow his or her instructions for simple tasks (like walking a path or completing small chores). After each round, switch leaders.

Afterward, discuss how following instructions in the game relates to obeying God. How does listening and trusting make a difference?

## Live It

This week, reflect on how you can practice obedience in your life. Identify one area where you’ve been resisting God’s call—whether it’s a relationship, a responsibility, or a personal habit—and make a conscious effort to surrender it to him. Ask for Mary’s intercession to help you say “yes” to God with trust and courage, just as she did.

## Visio Divina

Spend time reflecting on the image of *Wedding at Cana*. In this scene, imagine the joyous celebration as Mary quietly observes that the wine has run out and, with quiet confidence, turns to Jesus for help. Jesus, at her request, performs his first public miracle, turning water into wine.

**Question 1:** As you reflect on the scene, what strikes you about Mary’s role in prompting this miracle? How does her quiet obedience to God’s plan inspire you?

**Question 2:** How do you imagine Jesus responding to Mary’s request? What does this teach you about trusting God’s timing and will?

**Question 3:** What does Mary’s posture in relation to Jesus reveal about her receptivity and obedience?

© 2025 Ascension Publishing Group, LLC. This product is intended for reproduction in parish bulletins in either electronic or printed form. Excerpts were taken from the *Lectionary for Mass for Use in the Dioceses of the United States of America, Second Typical Edition* © 2001, 1998, 1997, 1986, 1970 Confraternity of Christian Doctrine, Inc., Washington, DC. Used with permission. All rights reserved. No portion of the *Lectionary* may be reproduced by any means without permission in writing from the copyright owner. The Scripture quotation at the top of the first page is from the *Revised Standard Version—Second Catholic Edition (Ignatius Edition)*, © 2006 National Council of the Churches of Christ in the United States of America. Used by permission. This work is not for resale.

## Please hold in prayer

CONTACT THE PARISH OFFICE, [BULLETIN@STMKC.COM](mailto:BULLETIN@STMKC.COM) OR 942-2492 X202, TO ADD OR REMOVE NAMES FROM THE PRAYER LIST. IF YOUR NAME IS DROPPED OFF AND YOU ARE IN NEED OF ADDITIONAL PRAYERS FOR HEALING, CONTACT THE PARISH OFFICE. **NAMES APPEAR EVERY OTHER WEEK.**

### ...our family and friends in the military:

Nick Alder  
Drew Belzer

Nathan Butcher  
Logan Elrader-Effertz

TJ Francik  
Luke Jokerst

Jonathan Kennaley  
Zach Love

Christopher Yates

### ...our parishioners who are sick:

Mary Sue Adams  
Roberta Aguirre  
Rita Armstrong

Bill Cusick  
Cricket Hill  
Donna Johnson

Kathy Lawson  
Linda Neenan

Monica Nelson  
Carol Turner

JoAnn Walton  
Bill Young

### ...our family and friends who are sick:

Tom Bauer  
Emma Beaver  
Scott Caron

Marie Dooley  
Edward Dulle  
Chris Frantze

Emily Kurek  
Katherine Markes  
Denise Adams Mehlo

Noel Mehlo  
Carol Shelangouski  
Stephanie Shaver

Peter Szumigala  
Stephan Tafuro  
Pat Wells

### ...our family and friends who have died:

Carolyn Oberjurge



# MEN OF STM CHARITY GOLF TOURNAMENT

## FRIDAY, MAY 2, 2025

EAGLES LANDING GOLF COURSE • 4200 BONG AVENUE • BELTON, MO • (816) 318-0004

**1:00pm Shotgun Start • 12:00pm check-in • 4-Man Scramble**

Come out and enjoy a day on the golf course with other men from STM while helping to raise money for Catholic education at STM. Catered dinner from BB's Barbeque immediately following event.



\$200 Hole Sponsorship  
\$140 per Player  
\$20 Dinner only  
Mulligans \$5 each or  
5 for \$20.

### SIGN UP AT MENOFSTM.ORG

**OR...PLEASE COMPLETE THE FOLLOWING INFORMATION AND RETURN THE BOTTOM OF THIS FORM TO THE ADDRESS LISTED BELOW:**

Hole Sponsorship\_\_\_\_\_ \$200

Team Captain\_\_\_\_\_ Email:\_\_\_\_\_ \$140

Contact me about: ☐ Volunteering ☐ Raffle / Door Prize Donations

Player 2:\_\_\_\_\_ Email:\_\_\_\_\_

Phone:(\_\_\_\_\_)\_\_\_\_\_ \$140

Player 3:\_\_\_\_\_ Email:\_\_\_\_\_

Phone:(\_\_\_\_\_)\_\_\_\_\_ \$140

Player 4:\_\_\_\_\_ Email:\_\_\_\_\_

Phone:(\_\_\_\_\_)\_\_\_\_\_ \$140

*All players will receive shirt, 18 holes of golf with cart, practice range balls, drinks on the golf course, dinner and drinks after the event.*

**SIGNUP** at menofstm.org or send this form (with check made payable to STM) to:  
Men Of STM Golf Tournament •  
c/o Liam Cahill 12108 Madison Ct, KC MO 64145

**PROCEEDS** from this year's tournament will be used for Catholic Education Materials for STM children, including Bibles for the Spring Graduates, and other school needs.

**QUESTIONS** Call 913-558-9835 or email: LiamPGA@sbcglobal.net

## Considering becoming Catholic?

**Inquiry: Tuesdays, 6:15-7:30pm, More Hall A**

**Apr. 5: OCIA Retreat, 9am-Noon, Church**

OCIA sessions are open to those who want to learn more about the Catholic Church and to discern God's invitations offered through the Catholic Church. Questions? Parishioners are also welcome! Contact Father Justin, frjhoye@stmkc.com or 816-942-2492 x204.

## Children's Liturgy of the Word (CLOW)

**April 6 & 13, at 9am Mass**

Children through 2nd grade are invited to participate in CLOW. In April, CLOW is offered on 1st & 2nd Sundays. Questions? Contact Joan Sandford, 816-942-2492 x202 or joan@stmkc.com.

## SPRED Class

**Monday, April 7, 6:30-8:30pm, More Hall**

An adult group for the developmentally delayed meets about every other week to share their faith. Questions? Email Becky at bturner727@yahoo.com.

## School of Religion (SOR)

**Wednesdays, 6:15-7:30pm, More Hall A**

SOR provides catechesis for grade school children (1st-8th) who do not attend Catholic school. Questions? Email Susan at aquiel2000@yahoo.com.

# Parish Calendar of Events

Sat., Apr. 5 - OCIA Retreat, 9am-Noon

Blingo, 6pm, More Hall

Sun. Apr. 6 - 5th Sunday of Lent

Monthly Food Drive, Narthex

Children's Liturgy of the Word, 9am Mass

OCIA 3rd Scrutiny, 11am Mass

Lenten Small Group, 2-3:30pm, Bauman Room

Mon., Apr. 7 - Lenten Small Group, 4-5:30pm, Bauman

STM serves at One City Cafe

SPRED, 6:30-8:30pm, More Hall B/D

Living Waters, 7-9:30pm, Church

Tue., Apr. 8 - Lenten Small Group, 9-10:30am

Blood Drive, 2-6pm, More Hall

Lenten Small Group, 6-7:30pm

OCIA, 6:15-7:30pm, More Hall A

Wed., Apr. 9 - Forgiveness Series, 1-2pm, Bauman

School of Religion, 6:15-7:30pm

Thu., Apr. 10 - Lenten Small Group, 2-3:30pm, Bauman

Choir Rehearsal, 7pm, Church

Knights of Columbus, 7:15pm, More Hall Fri., Apr. 4 -

Fri., Apr. 11 - Stations of the Cross, 5pm, Church

Scout Fish Fry, 5-7pm, More Hall

Sun., Apr. 13 - Palm Sunday

Children's Liturgy of the Word, 9am Mass

Lenten Small Group, 2-3:30pm, Bauman Room

Mon., Apr. 14 - Lenten Small Group, 4-5:30pm, Bauman

Living Waters, 7-9:30pm, Church

Tue., Apr. 15 - Lenten Small Group, 9-10:30am

Lenten Small Group, 6-7:30pm

OCIA, 6:15-7:30pm, More Hall A

Wed., Apr. 16 - Uplift, 1:30-3pm, More Hall Kitchen

Forgiveness Prayer Series, 1-2pm, Bauman Room

Grief Peer Support, 4-5pm, Bauman

School of Religion, 6:15-7:30pm

**Thu., Apr. 17 - Holy Thursday**

Lenten Small Group, 2-3:30pm, Bauman

Mass of the Lord's Supper, 7pm

Eucharistic Adoration, 8:30-10pm, Chapel

**Fri., Apr. 18 - Good Friday**

Seven Last Words of Jesus, Noon, Church

Adoration of the Cross & Communion, 7pm

**Sat., Apr. 19 - Holy Saturday**

OCIA Vigil practice, 9-10am, Church

Easter Vigil, 8pm

**Sun., Apr. 20 - Easter Sunday**

Masses at 7:30am, 9am, 11am

Egg Hunt after 9am Mass for 10 yr. and under

## STM School

Linda Crosthwait, Principal

816-942-5581 STMKCSCHOOL.ORG



## School Registration

New Families: Please email Jill Brennan for a tour and/or registration info: brennan\_jill@stmclones.org.

## MOScholars Tax Credit

Maximize your impact on Catholic education in Missouri, at no cost to you. You can redirect up to 50% of your state income tax liability to the Bright Futures Fund, providing vital scholarships to qualifying students in our diocese.

For more information, visit BrightFuturesFund.org and click "Reserve Your MO Tax Credits Here" (linking to the MO State Treasurer's website). Please call Christy at 816-714-2338 with any questions.



## School Dates

Fri., Apr. 4 - Stations of the Cross, 2:30-3pm  
Dine Out Night at Sonic, 4-8pm  
Tue., Apr. 8 - Adoration, 2-3pm  
Home & School mtg., 6:30-8:30pm, More Hall  
Thu., Apr. 10 - 8th Grade Musical, 6pm, Flanagan Hall  
Fri., Apr. 11 - 8th Grade Musical for school students  
Thu., Apr. 17 - School dismissed at 12:30pm

## STM School Receives \$40K Grant from FIRE Foundation

The FIRE Foundation (Foundation for Inclusive Religious Education), operating in 15 schools in our diocese, awarded STM a \$40K grant to STM School for the 2025-26 academic year. This grant helps to fund STM's commitment to inclusive Catholic education.

## New Smart Boards in Every Classroom

Last week, the Smart Boards were installed at STM School. This \$100,000 project was a long time in the making and was made possible by the work of Nan Bone and the Strategic Planning Committee and the generosity of a group of benefactors. The children are already exploring and engaging with this new technology that will enhance their learning.



**8th Grade Musical**  
**Thursday, April 10, 6pm**  
**in Flanagan Hall**  
**All parishioners welcome!**

## Parish Office Staff

	Sharon Arnett Liturgy Coordinator x208 sharon@stmkc.com		Bob Sandford Publications & Music Director x212 bob@stmkc.com
	Mary Begnaud Receptionist x201 mary@stmkc.com		Joan Sandford Office Manager x202 joan@stmkc.com
	Scott Dulle Building & Grounds Director dulle_scott@stmcydones.org		Father Paul Sappington In Residence frsappington@smacatholic.org
	Father Justin Hoyer Pastor x204 frjhoey@stmkc.com		Hayley Shaver Evangelization & Discipleship x223 hayley@stmkc.com
	Jyllan Hudson Funeral & Wedding Liturgist jyllan@stmkc.com		Tim Waris Business Manager x218 tim@stmkc.com
	Becky Johnson Finance Coordinator x224 becky@stmkc.com		Father Pius Wesonga, AJ Associate Pastor x203 frpwesonga@stmkc.com
	Peggy Lucas Pastoral Associate/Outreach x210 peggy@stmkc.com		

## Parish Office Hours (until further notice)

Office Hours: M-W 8:45am-3:30pm; T-Th 8:45am-5pm  
F 8:45am-1pm

## Finance Ministry Team

Justin Hicks, Chair  
Mark Meierhoffer  
Bruce Gregg  
Stefanie Bresette  
Laura Christopherson  
*Parishioner volunteers serve for three-year terms.*  
Questions? Email FinanceCouncil@stmkc.com.

**Diocesan Ombudsman**  
Joe Crayon crayon@ombudsmankcsj.org or  
816-812-2500

**Victim Advocate**  
816-392-0011 or victimadvocate@diocesekcsj.org

## To register as a member of Saint Thomas More Parish...

...go to stmkc.com/registration, contact the parish office or pick up a registration form on the Information table in the church narthex.

## Safe Environment Information

The Diocese of Kansas City~Saint Joseph is committed to combatting sexual abuse in the Church. If you are a victim of sexual abuse, or if you *observe or suspect* sexual abuse:

- Call the **MO Child Abuse Hotline**, 1-800-392-3738 (if the victim is currently under the age of 18), or **KS Protection Report Center**, 1-800-922-5330, and
- Contact your **local law enforcement agency** or call 911, and
- After reporting to these civil and law enforcement authorities...if the abuse involves a priest, deacon, employee or volunteer of the Diocese of Kansas City~St. Joseph report suspected abuse to the Diocesan Ombudsman, Joe Crayon, at 816-812-2500 or [crayon@ombudsmankcsj.org](mailto:crayon@ombudsmankcsj.org).

The diocese has a sincere commitment to providing care and healing resources to victims of sexual abuse and their families. Please contact the Victim Advocate at 816-392-0011 or [victimadvocate@diocesekcsj.org](mailto:victimadvocate@diocesekcsj.org).

**FOR ADDITIONAL INFORMATION**, contact:

**Joan Sandford**, Parish Safe Environment Coordinator, [safety@stmkc.com](mailto:safety@stmkc.com) or 816-942-2492 x202, OR

**Tracy Stewart**, School Safe Environment Coordinator, [stewart\\_tracy@stmcyclones.org](mailto:stewart_tracy@stmcyclones.org) or 816-942-5581.

## Mass Intentions

Mon: 8:15AM Bob & Marcie Thedinger<sup>†</sup>  
4/7  
Tues: **6:15AM Mary Kate Hughes<sup>†</sup>**  
4/8 8:15AM Carolyn Rasmussen<sup>†</sup>  
Wed: **6:15AM Fred Hess Jr<sup>†</sup>**  
4/9 \*\*8:15AM Jane Keller<sup>†</sup>  
Thur: **6:15AM Joan & Pat Hughes<sup>†</sup>**  
4/10 8:15AM Carl & Linda Fiorella<sup>†</sup>  
Fri: **8:15AM Matthew McCullough<sup>†</sup>**  
4/11  
Sat: **8:15AM Paula Vohs<sup>†</sup>**  
4/12 4:00PM BJ Spalding Jr<sup>†</sup>  
Sun: **7:30AM Sam & Maria Termini<sup>†</sup>**  
4/13 9:00AM Our Parishioners  
**11:00AM Mark Ayers<sup>†</sup>**

<sup>†</sup> Deceased

\*\*School Mass

*To request a Mass intention, stop by the parish office or call 816-942-2492. Suggested donation per Mass is \$10.*

## SCRIPTURE READINGS

For the daily readings, visit [usccb.org/bible/reading](http://usccb.org/bible/reading). Have the readings sent to your email each day, hear the readings read to you, or watch a video with a reflection based on the readings.

 <p><b>TJ BRENNAN</b> - Parishioner 816.394.2224 • HOME • AUTO • BUSINESS • LIFE <a href="mailto:tjbrennan@cekinsurance.com">tjbrennan@cekinsurance.com</a> <a href="http://www.cekinsurance.com">www.cekinsurance.com</a></p>	<p>WE APPRECIATE OUR ADVERTISERS!</p>	<p>The Genuine. The Original.  Overhead Door Company of Kansas City™ A SPACE Company</p>
 <p>SUPPORT OUR PARISH</p>		
 <p><b>Brady Crawford</b> Insurance &amp; Financial Services 816.333.5853 <a href="http://coveredbycrawford.com">coveredbycrawford.com</a> Locations in Waldo &amp; Martin City</p> <p>RENTERS HOMEOWNERS CONDO AUTO PET PERSONAL ARTICLES BUSINESS LIFE HEALTH</p>	<p><b>FREE AD DESIGN</b> with purchase of this space <b>CALL</b> 800-477-4574</p>	<p><b>SERVING KANSAS CITY SINCE 1927</b> REPAIR + REPLACE GARAGE DOORS AND OPENERS RESIDENTIAL DOORS <b>FREE ESTIMATES • 816-320-5430</b> <a href="http://OverheadDoorKansasCity.com">OverheadDoorKansasCity.com</a></p>
<p><b>IF YOU LIVE ALONE</b> <b>MDMedAlert!</b>™ As Low As <b>\$19<sup>95</sup></b> /mo. ✓ Ambulance ✓ Police/Fire ✓ Family/Friends ✓ GPS &amp; Fall Alert <b>CALL NOW! 800.808.9294</b> <a href="http://md-medalert.com">md-medalert.com</a></p>	<p><b>SHORT STAFFED?</b> Place an ad here to find new local talent for your business. <b>CALL 800-477-4574</b></p>	 <p><b>Office: 913-722-6200</b> <b>Cell: 913-269-7124</b> <a href="mailto:julie@juliestoll.com">julie@juliestoll.com</a> <b>Julie Stoll</b> State Farm Agent</p>



For ad info. call 1-800-950-9952 • [www.4lpi.com](http://www.4lpi.com)

St. Thomas More, Kansas City, MO

C 4C 02-0710





A Fresh and Polished Approach to Oral Health

4851 WEST 134TH STREET • LEAWOOD • KANSAS 66209-7803  
913.681.8300 • WWW.JEFFTHOMPSONORTHODONTO.COM

JEFFREY J. THOMPSON, D.D.S., M.S.  
DIPLOMATE AMERICAN BOARD OF ORTHODONTICS

catholicmatch®  
Missouri



CatholicMatch.com/MO



**WALK-IN CLINIC**  
for sports injury or fractures

M-F: 9am -11am, 1pm - 3pm. Ages 0 -16

**pediatric orthopaedic  
surgery Associates**

5250 W. 94th Terrace, Prairie Village, KS 66207

**913-451-0000**

www.pedorthokc.com

Like a good neighbor **State Farm**  
State Farm is there.®



13012 Fuller  
P.O. Box 230  
Grandview, MO 64030

STATE FARM INSURANCE COMPANIES  
HOME OFFICES BLOOMINGTON, ILLINOIS

**Larry B. Langford,**

CLU CHFC

Bus.: 816-761-8711

Res.: 816 217 8112

larry.langford.b5u9@statefarm.com



**RE/MAX**®

State Line Real Estate



**Tina R. Gaughan**  
REALTOR®, SRES

Direct Line: (913) 312-3630

Mobile: (816) 835-3230

TinaGaughan@gmail.com

TinaGaughan.com

11251 Nall Ave. • Leawood, KS 66211



Spring savings!  
11% OFF wood rot  
repair services

913-393-3934

www.odysseypainting.com

Exterior/Interior Painting • Home/Deck/Fence Repair • Exterior Door/Garage Door Replacement



**FREE  
AD DESIGN**

with purchase  
of this space

**CALL  
800-950-9952**



**WE'RE HIRING!**

AD SALES EXECUTIVES

BE YOURSELF.  
BRING YOUR PASSION.  
WORK WITH PURPOSE.

- Paid training
- Some travel
- Work-life balance
- Full-Time with benefits
- Serve your community



Contact us at  
[careers@4lpi.com](mailto:careers@4lpi.com) or  
[www.4lpi.com/careers](http://www.4lpi.com/careers)

learn.  
grow.  
soar.

**FORMING MEN AT  
THE ROCK**

ROCKHURST HIGH SCHOOL

WWW.ROCKHURSTHS.EDU/ADMISSIONS



**Catholic Family  
CREDIT UNION**

Full Service For All Your Needs  
816-444-7440

9237 Ward Parkway, Ste 114

[www.catholicfamilycu.com](http://www.catholicfamilycu.com)

Savings Insured by the NCUA up to \$250,000



**PILEGGI PAINTING**

Exterior - Interior - Decks - Residential & Commercial

**Frank Pileggi - Owner**

[www.PileggiPainting.com](http://www.PileggiPainting.com)

[frank@pileggipainting.com](mailto:frank@pileggipainting.com) | 913-558-5204

**LET'S GROW YOUR BUSINESS**

Place Your Ad Here  
and Support Our Parish!

**CONTACT ME  
Jon Becker**

[jbecker@4LPi.com](mailto:jbecker@4LPi.com)  
(800) 950-9952 x2536

**DOES YOUR NONPROFIT  
ORGANIZATION NEED  
A NEWSLETTER?**

Engaging, ad-supported  
print and digital newsletters  
to reach your community.

Visit [lpicomunities.com](http://lpicomunities.com)

OUR COMMUNITY  
NEWSLETTER  
OCTOBER EDITION



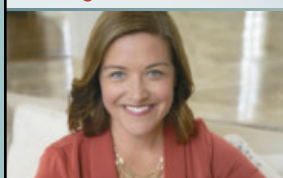
Scan to  
contact us!



**URGENT CARE**  
AT HOME

In home evaluations and  
treatments helps you skip the  
wait and get the care you need,  
when and where you need it.

Meghan Macy  
FNP-BC, APRN, NE  
(816) 223-7638  
[www.urgentcareathomekc.com](http://www.urgentcareathomekc.com)



Mary Owens Boesen  
Parishioner  
Life & Health Insurance Sales

**MEDICARE**

Let me help you! 30 years experience

**816-942-0666 • [mboesen@kc.rr.com](mailto:mboesen@kc.rr.com)**

**CottageCare**  
HOUSE CLEANING AT ITS BEST!

For Pricing call (913) 469-0220  
or visit [cottagecare.com](http://cottagecare.com)

**JD & Jakes**  
THE BARBER SHOP

(816) 569.2887 (cuts)  
13033 Holmes Rd.



**SANDTRAP**  
Bar & Grill

(816) 942-0990 | 13037 Holmes Rd.



For ad info. call 1-800-950-9952 • [www.4lpi.com](http://www.4lpi.com)

St. Thomas More, Kansas City, MO

B 4C 02-0710





Buy one Breakfast, Lunch or Dinner Combo meal  
and get one of equal or lesser value **FREE**

Limit one coupon per customer per visit. Please present coupon when ordering.

Not valid with any other offer. Expires April 30, 2026

Code 0710

24 Highway McDonald's  
11700 East US Highway 24  
Independence, MO

Eastland McDonald's  
18910 East US Highway 40  
Independence, MO

Susquehanna McDonald's  
16235 East US Highway 24  
Independence, MO

BR Crossing McDonald's  
11801 East US Highway 40  
Independence, MO

40 Highway McDonald's  
920 SW US Highway 40  
Blue Springs, MO

North 7 McDonald's  
814 NW State Route 7  
Blue Springs, MO

Woods Chapel McDonald's  
1515 NW Woods Chapel Rd  
Blue Springs, MO

South 7 McDonald's  
3116 South 7 Highway  
Blue Springs, MO

Chouteau McDonald's  
4400 N Chouteau Traffic Way  
Kansas City, MO

Broadway McDonald's  
3741 Broadway Boulevard  
Kansas City, MO

Red Bridge McDonald's  
11001 Hickman Mills Drive  
Kansas City, MO

Blue Ridge McDonald's  
5260 Blue Ridge Boulevard  
Raytown, MO

REDEEMABLE ONLY AT:

Carpets | Area Rugs | Upholstery  
Hardwood Floors | Air Ducts  
Tile & Grout | Residential/Commercial



(816) 425-3655  
www.zerorezkc.com

Steven Phelps

Better Homes and Gardens  
REAL ESTATE  
KANSAS CITY HOMES



Judy Sheaman, ABR

Sales Executive  
with 26 Yrs. Experience

Parishioner

Licensed in Kansas & Missouri

Office: 913-981-2827

Cell: 816-304-2888

KC Magazine

"Five Star Real Estate Agent"

for overall customer satisfaction since 2005



KC's Leading Decking &  
Andersen Window Supplier

Mike McGlinn  
Parishioner

816-331-2211

OwenLumber.com

LET'S GROW YOUR BUSINESS

Place Your Ad Here and Support Our Parish!

CONTACT ME Jon Becker

jbecker@4LPi.com • (800) 950-9952 x2536

ALLIED  
CONCRETE  
PRODUCTS  
12800 2nd St. Grandview  
816-966-8836  
Judy, Pete, & Amparo Furey  
Parishioners

RESIDENTIAL  
SEWAGE  
TREATMENT  
COMPANY, INC.  
12800 2nd St. Grandview  
816-966-8885  
Kathy Maguire & Tom Fritts  
Parishioners

MCGILLEY  
MEMORIAL CHAPELS  
SINCE 1899

Funerals | Cremations | Receptions | Celebrations

"Celebrating Lives"

Patrick McGilley | Joe Haster | 816-942-6180 | www.mcgilleystatelinechapel.com

The Madison  
SENIOR LIVING



Learn more about life  
at The Madison!

Schedule a Tour | (816) 327-1726



Muehlebach Funeral Care  
& Cremation Services



816-444-2060

www.muehlebachchapel.com

"Our Family Dedicated to Serving Yours."

Parishioners:

Steve & Nicole Pierce

Jordan Pierce

STM Class of 2011

Jenny Mertes

Tom Reagan



Part-time  
Child Care Jobs  
Now Hiring!

Apply at: [kclinc.org/parttimejobs](http://kclinc.org/parttimejobs)

LINC Caring Communities Sites

North Kansas City - Kansas City Public Schools  
Center - Hickman Mills - Grandview



Your financial partner throughout your life.

Matthew Pomianek, AAMS®, Financial Advisor, Parishioner  
5000 W 95th St Ste 103  
Prairie Village, KS 66207

913-648-6084  
matthew.pomianek@edwardjones.com

Member SIPC

Edward Jones  
MAKING SENSE OF INVESTING



WE APPRECIATE OUR  
ADVERTISERS!

ACCESS YOUR POTENTIAL



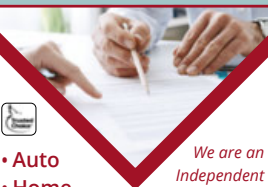
Avila.edu/catholic

BURIAL • ENTOMBMENT • CREMATION • TRADITIONAL CEREMONIES • CELEBRATIONS OF LIFE

CULLEN  
FUNERAL HOME, INC.®



612 W Foxwood Dr  
Raymore, MO 64083  
(816) 322-5278



- Auto
- Home
- Life
- Commercial

We are an  
Independent  
Agency With  
Over 30 Years  
of Experience



NESTEL  
INSURANCE AGENCY  
"Where Customer Service Counts"

Mary Nestel

816-361-6442

9233 Ward Parkway Ste 124  
Kansas City, MO 64114

www.nestelinsurance.com  
info@nestelinsurance.com



JOE & MAGGIE TULIPANA

SHAWNEE

13214 W 62ND TERR, SHAWNEE, KS 66216

VILLAGE WEST (INSIDE NEBRASKA FURNITURE MART)

1601 VILLAGE WEST PKWY, KANSAS CITY, KS 66111

WE CATER!

913.268.488Q  
catering@blindboxbbq.com



For ad info. call 1-800-950-9952 • www.4lp.com

St. Thomas More, Kansas City, MO

A 4C 02-0710