

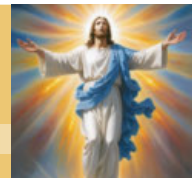


OUR **MISSION** IS TO PROVIDE
A WELCOMING, INCLUSIVE,
AND LOVING COMMUNITY BY
PROCLAIMING AND LIVING GOD'S
WORD THROUGH WORSHIP,
EDUCATION, AND SOCIAL JUSTICE.

SAINT THOMAS MORE PARISH

11822 Holmes Road, Kansas City, Missouri 64131 • stmkc.com

April 20, 2025



BULLETIN ONLINE

this and last week's at stmkc.com

Subscribe at stmkc.com/emailme→



MASSES

WEEKDAY: Mon & Fri 8:15am,
Tues, Wed, Thu 6:15am & 8:15am
First Sat 8:15am

WEEKEND: Sat 4pm, Sun, 7:30am, 9am & 11am

MASS ONLINE CONTINUES

RECONCILIATION

Individual Confessions: by appointment and
Tuesdays and Thursdays, 5-6pm

Saturdays, 3-3:45pm

First Saturdays, 7:15-8am

OUR CLERGY

Father Justin Hoye, Pastor

Father Pius Wesonga, AJ, Associate Pastor

In Residence: Father Paul Sappington

AT THE PARISH OFFICE

Office Hours:

Mon. & Wed. 8:45am-1pm, 2-3:30pm*

Tues. & Thurs. 8:45am-1pm, 2-5pm*

Friday 8:45am-1pm

* lunch hour 1-2pm

Parish Office 816-942-2492

Office directory at stmkc.com and p.9

AT THE SCHOOL OFFICE

Linda Crosthwait Principal

Tracy Stewart Assistant Principal

Office hours: Mon.-Thurs., 8am-3:45pm;

Fri., 8:30am-3:30pm

School Office 816-942-5581

School fax 816-941-2450

School email directory at stmkcschool.org

SCHOOL TOURS: contact Principal Linda Crosthwait at
816-942-5581 or crosthwait_linda@stmcydones.org

SAFE ENVIRONMENT

All employees and volunteers working with
minors are required to:

- Create an account at virtus.org
- Attend a Protecting God's Children
workshop
- Complete a mandated reporter training
- Submit to a background check
- Read the online Policy on Ethics and
Integrity in Ministry

For more Safe Environment information,
including reporting and victim resources,
see page 10.





THE PASTOR'S PEN

Faithful People of Saint Thomas More,

He is Risen! Alleluia! Alleluia!

We rejoice as Christians, moving through a week of passion and death, to the victory of Christ who has conquered death's hold on humanity. These next fifty days celebrate the resurrection of Jesus Christ from the dead, and our sharing in this triumph by our deepening immersion into His Body, the Church. We celebrate especially those individuals at the parish, welcomed into full communion with the Catholic Church this Easter Vigil. Their initiation is a reminder to all of us that we lay claim to Jesus' saving work in our own lives, every time we celebrate the sacraments.

We have an **Easter Egg hunt** on our two playgrounds this Easter Sunday, following our 9AM Mass. It's a chance to note that our playgrounds will be experiencing their own transformations over the summer, as we make a quarter-million dollar improvement to align the space with accreditation standards and expand its accessibility to children of divergent abilities.

Would you help with our efforts to "resurrect" both playgrounds this summer?! While work will begin in two months to replace the first playground, we are still around \$80K short to get the second one (for the youngest children) completed. If you'd like to help in efforts for both playgrounds ahead of the next school year, donations can be made online (clicking the "Playground Fundraiser" button at stmkc.com) or by noting "Playground" in any check memo to STM.

I also want to encourage families to place our **Vacation Bible School** on their calendars, June 23-27th. It's a fun week for our youth during the summer months.

Father Justin

TRIDUUM SCHEDULE

Holy Thursday Confessions, 5-6PM.
Mass of the Lord's Supper, 7PM.
Eucharistic Adoration in Chapel until 10PM.

Good Friday 7 Last Words of Jesus, Noon-1PM.
Celebration of the Lord's Passion, 7PM.
Divine Mercy Novena begins.
Collection for the Holy Land.

Holy Saturday Easter Vigil, 8PM
(No Scheduled Confessions; No 4PM Mass)

Easter Sunday Masses at 7:30AM, 9AM and 11AM.
Egg Hunt after 9AM Mass.
(No Sunday Eucharistic Exposition).

Easter Monday Mass at 8:15AM



Come Home to Communion



Daily Masses

Monday, 8:15am
Tuesday, 6:15 & 8:15am
Wednesday, 6:15 & 8:15am
Thursday, 6:15 & 8:15am
Friday, 8:15am
First Saturday, 8:15am

Sign Interpreted services: 2nd Sundays at 11am
Masses are recorded daily; find them at stmkc.com or youtube.stmkc.com.

The Light is on for You - Confessions

Confessions are offered in the reconciliation room.
Tuesday, 5-6pm Thursday, 5-6pm
Saturday, 3-3:45pm **First Saturday, 7:15-8am**
and by appointment

Church Hours for Private Prayer

Mon.-Fri., 6am-9pm
Sat.-Sun., 7am-9pm

Eucharistic Exposition at STM

Sundays, Noon-9pm in the Church

No Eucharistic Exposition on Easter Sunday or May 4.

Regular time spent with the Lord in Adoration can be life changing!

Pray the Rosary with Others

Sundays, after 9am Mass

Join with the Knights of Columbus in prayer.

Mon.-Fri., after the 8:15am Mass

All are welcome to pray the rosary or the Fatima devotions with others on first Saturdays, after 8:15am Mass.

Good Friday Stations of the Cross

Friday, April 18, 10am, behind the Cemetery Office

Father Andres Moreno will lead Stations of the Cross at Mount St. Mary's Cemetery, 2201 Cleveland Ave, KCMO. Bring your own seating and dress for the weather.

STM Traveling Vocations Crucifix - Easter Season



Parishioners are invited to sign up at stmkc.com to receive a traveling crucifix for a week during the Easter Season. Participants will bring up the gifts of bread and wine at a weekend Mass and receive at that time a crucifix and prayers to use during the week, seeking an increase in vocations to the priesthood and religious life. Thank you to the STM Vocations Committee and their promotion of this offering.

Fresh Fire Eucharistic Adoration

Friday, April 25, 7-9pm in the Church



Looking for a wonderful experience of prayer with others? Fresh Fire is an evening of candlelit Eucharistic Adoration with praise and worship music, a personal witness, and prayer teams. Experience the power of Jesus' healing presence! Note: This is the last one for the season!

April Prayer Intentions

Pope Francis: Let us pray that the use of the new technologies will not replace human relationships, will respect the dignity of the person, and will help us face the crises of our times.

Bishop Johnston: For all musicians and those who teach and tutor others in learning how to play an instrument, to sing, compose, and appreciate music. That they be supported and blessed in their profession and efforts to enrich the world with beauty.

Care & Support

Grief Peer Support Group

1st & 3rd Wed. (May 7), 4-5pm, Bauman Room

Grief is difficult and can be experienced as a result of any kind of loss. In addition to supporting each other, we use various resources to better understand our grief. Peggy Lucas, Pastoral Associate, facilitates these groups. Attend as you are able. For more info, contact her at peggy@stmkc.com or 816-942-2492 x210.

Please hold in prayer

CONTACT THE PARISH OFFICE, BULLETIN@STMKC.COM OR 942-2492 X202, TO ADD OR REMOVE NAMES FROM THE PRAYER LIST. IF YOUR NAME IS DROPPED OFF AND YOU ARE IN NEED OF ADDITIONAL PRAYERS FOR HEALING, CONTACT THE PARISH OFFICE. **NAMES APPEAR EVERY OTHER WEEK.**

...our family and friends in the military:

Thomas Edwards
Seth Gulsby

Zacchary Henry
John Hylander

Steve Janner
Sarah Katz

Brian Owara
Alycia Pouch

Nathan Pouch
John P. Sullivan

...our parishioners who are sick:

Peggy Calhoun
Carol Gretencord
Iva Hamilton

Porter Hovey
Lola Jacobs
Jack Jones

Carol Katzer
avid Peterson
Laura Rupp

Bill Swartz
Nancy Swartz
Kathy Vervaecke

Leonardo Viril
Anita Wagner

...our family and friends who are sick:

Duane Brown
Melinda Brown

Alissa Carter
Joy Davie

Charles Haster
Glen Horton

Julie Aguirre Johnson
Richard Layton

Brian Robinson
Lester Wells

...our family and friends who have died:

Tony Romano

Join the STM Prayer Chain and Pray for Others

When a prayer request is received at the parish office, an email is sent out, asking for prayers. If you are in need of prayer or interested in praying for those requesting prayer, contact Peggy Lucas at peggy@stmkc.com or 816-942-2492 x210.

Meals for Moms

Meals can be a huge support as families welcome new babies! We're putting together an email list to support families in this way at STM. If you would like to be on the list to know when meals are needed, contact Hayley Shaver.

Retrouvaille (Retro-vi)

May 16-18 (Friday-Sunday), Kansas City

Not willing to let go of your marriage? There is hope! Retrouvaille is very different than other marriage programs. Some spouses resist the idea of attending out of concern that they will be required to expose their personal lives and their marital problems. That is not true! And most couples find that this is the very thing that worked when all else failed.

Retrouvaille begins with an immersion weekend led by three couples. The couples then take part in 12 two-hour follow-up sessions that delve deeper into concepts introduced on the weekend.

For more information, visit helpourmarriage.org.

One Family RESTORED IN CHRIST, EQUIPPED FOR MISSION



Using Resources Wisely
Aligning God's gifts for the Church's life and mission

National Prescription Drug Take Back Day

Saturday, April 26, 10am-2pm

Individuals are invited to examine their medicine cabinets and collect their expired over-the-counter pills, prescription drugs, or other unused medication and dispose of them in appropriate ways. Drugs that end up in our water systems or landfills can be harmful to humans and wildlife. Parishioners are invited to bring their drugs to a local drop-off, where the medications will be incinerated. Some nearby sites:

- 9701 Marion Park, KCMO - KC Police Department South Patrol
- 4201 Town Center Drive, Leawood - Leawood Police Department
- 8430 Wornall - Price Chopper (collected by KC Police Department)

Green Team Film: "We Are All Plastic People Now"

Sunday, April 27, 10:15-11:15am, More Hall

The Green Team will show this timely and provocative documentary with a discussion after. This groundbreaking film is an Emmy winning documentary that reveals the hidden story of plastic and its effects on human health. Refreshments will be served. Questions? Contact Peggy Lucas at peggy@stmkc.com.



TEXAS HOLD 'EM POKER TOURNAMENT

Friday, April 25

More Hall 11822 Holmes Rd

Register 7PM Play 730PM

CASH PRIZES

1st \$300 - 2nd \$200 - 3rd \$100

Pre-Registration \$30 Walk-Ins \$35

Proceeds Benefit KofC Charities

Saint Thomas More Knights of Columbus Council 14270

TEXAS HOLD 'EM TOURNAMENT REGISTRATION

To pre-register: Email kcmarkus@sbcglobal.net Or: text 816-213-9375

Leave your name and the number in your group

Men of STM Charity Golf Tournament

Friday, May 2; Noon Check-in, 1pm Shotgun Start

Enjoy the day at Eagles Landing Golf Course, 4200 Bong Ave., while raising funds for Catholic education at STM. BB's Barbeque is on the menu for dinner at the course, immediately following the event. Cost is \$200 for hole sponsorship, \$140/player, \$20 for dinner only. Mulligans are \$5 each or 5 for \$20. All players receive a shirt, 18 holes of golf with a cart, practice balls, drinks, and dinner. Proceeds will benefit STM School. To register, contact Liam at LiamPGA@sbcglobal.net or 913-558-9835.

Sunday Q&A

Your Faith in Focus



EASTER'S CALL: EVANGELIZE

As a regular Catholic, shouldn't I leave spreading the word about Jesus to the experts?

The Easter encounter that St. Mary Magdalene experiences is *our* call to give witness. A witness is not an expert making an argument, but someone who shares an experience. We are all called to give testimony to the resurrected Lord in our lives. What is your witness? Here is the witness of Mary of Magdala.

Despite Flaws, We Share

Dr. Marcellino D'Ambrosio reminds us that Jesus chose witnesses who were uneducated and highly imperfect. It is unlikely that either the apostles or Mary Magdalene had theology degrees from a rabbinical academy. And when it comes to sanctity, all but the Mother of Jesus fall a bit short. Mary Magdalene, a year or two prior to the Resurrection, had been possessed by seven demons. Peter had denied Jesus three times, just a few days before Easter morning. And all of the Twelve, save the Beloved Disciple, had abandoned Jesus as he was dragged from the garden and nailed to the Cross.

Our Lord nonetheless commissioned these highly flawed people to take the Good News to all nations.

We Are Called to Witness

To explain why they were—and we are—capable of doing this, let's analyze the role of a witness in a court of law. A witness is not called to make a coherent, comprehensive case for or against someone who is on trial. The witness is called upon to answer questions about what he or she saw or heard. When prompted, a witness simply shares her or his experience.

Mary Magdalene and the apostles were eyewitnesses of the Risen Christ. More than five hundred disciples shared in this experience, according to Paul (see 1 Corinthians 15). They could bear witness to seeing him bodily. We, obviously, cannot.

But the Gospel, the Good News, is this. Through the death and Resurrection of Jesus Christ, all sin is forgiven. He, who will be the judge, died to acquit us all. People have only to accept this forgiveness to experience freedom and profound peace. Peter, Thomas, Mary Magdalene, and all the disciples knew the sweetness of his forgiveness in the face of the bitterness of their sin. And so do we.

Though the fullness of the risen life is yet to come for us, we have experienced being reborn through the Resurrection of Jesus and his gift of the Holy Spirit, the down payment of the treasure reserved for us in heaven.

SAVE THE DATE

Vacation Bible School

Registration opens in
May! ✨



WHERE: STM PARISH

WHEN: JUNE 23- 27. 9AM-NOON

WHO: CHILDREN AGES 6-11

MIDDLE/HIGH SCHOOLERS & PARENT VOLUNTEERS

NEEDED! INTERESTED VOLUNTEERS CONTACT

HAYLEY AT HAYLEY@STMKC.COM

To Commemorate Saint Thomas More's 60th Anniversary

*The Faith in Action Team
invites every parishioner
to engage in*



ACTS OF KINDNESS

*Each month, between
October 2024 and June
2025, we will feature
suggested small acts of
kindness for you and your
family to try,*



- ⑥ Make an Easter basket for someone who is alone.
- ⑥ Send an Easter card to someone.
- ⑥ Bring Easter cards for a senior living community.
- ⑥ Forgive someone.
- ⑥ Keep an umbrella in your car and share it with someone in the rain.
- ⑥ Write a note to a newly initiated member of our Catholic Church.
- ⑥ Take a grandchild on a nature walk.
- ⑥ Make a \$20 for Lent donation. See the bulletin for more information.
- ⑥ Inventory your Spring wardrobe and donate clothing you no longer wear.
- ⑥ Participate in a local 5k charity walk.



Children's Liturgy of the Word (CLOW)

May 4, at 9am Mass

Children through 2nd grade are invited to participate in CLOW on 1st & 3rd Sundays in May. After the opening prayer, children are dismissed to hear the readings on their level. They rejoin their families after the homily. Questions? Contact Joan Sandford, 816-942-2492 x202 or joan@stmkc.com.

SPRED Class

Monday, April 21, 6:30-8:30pm, More Hall

An adult group for the developmentally delayed meets about every other week to share their faith. Questions? Email Becky at bturner727@yahoo.com.

GIFT: Growing in Faith Together

Tuesdays, 9-10:30am, Bauman Library

Women gather each week to break open the Sunday readings. All are welcome to join in! Questions? Email Becky at bturner727@yahoo.com.

School of Religion (SOR)

Wednesdays, 6:15-7:30pm, More Hall A

SOR provides catechesis for grade school children (1st-8th) who do not attend Catholic school. Questions? Email Susan at aquiel2000@yahoo.com.

Mass and Tour of St. Mary's Home for Mothers

Wednesday, April 30, 9:30am

As part of the Jubilee Year Pilgrims of Hope, the Faith in Action Team is coordinating a trip to St. Mary's Home for Mothers. We will attend Mass at 9:30am followed by a tour of the facility. Please RSVP to Peggy Lucas **by Monday, April 28** at peggy@stmkc.com.

St. Mary's Home for Mothers provides emotional, material and spiritual services for women in the KC metro area who are pregnant and homeless. It is one of the organizations we are collecting money for through our \$20 for Lent effort. For those who are interested, we can carpool to St. Mary's Home for Mothers which is located near Liberty, MO. Please let Peggy know if you would like to carpool when you RSVP.

Parish Calendar of Events

Thu., Apr. 17 - Holy Thursday

Parish Office closes at 1pm
 Lenten Small Group, 2-3:30pm, Bauman

Mass of the Lord's Supper, 7pm
 Eucharistic Adoration, 8:30-10pm, Chapel

Fri., Apr. 18 - Good Friday

Parish Office closed
 Seven Last Words of Jesus, Noon, Church
 Adoration of the Cross & Communion, 7pm
 Collection for the Holy Land
 Divine Mercy Novena begins

Sat., Apr. 19 - Holy Saturday

OCIA Vigil practice, 9-10am, Church
 Easter Vigil, 8pm

Sun., Apr. 20 - Easter Sunday

Masses at 7:30am, 9am, 11am
 Egg Hunt after 9am Mass for 10 yr. and under

Mon., Apr. 21 - Parish Office closed

SPRED, 6:30-8:30pm, More Hall B/D

Living Waters, 7-9:30pm, Church

Tue., Apr. 22 - GIFT, 9-10:30am, Bauman Library

Wed., Apr. 23 - School of Religion, 6:15-7:30pm

Thu., Apr. 24 - Choir Rehearsal, 7pm, Church

Fri., Apr. 25 - 8th Grade Respect Life Lunch, More Hall

Texas Hold 'Em, 7pm, More Hall

Fresh Fire, 7-9pm, Church

Sun., Apr. 27 - Divine Mercy Sunday

Green Team Film, 10:15-11:15am, More Hall

Guatemala Traveler mtg., 6-7:30pm, More Hall

Mon., Apr. 28 - SPRED, 6:30-8:30pm, B/D

Living Waters, 7-9:30pm, Church

Tue., Apr. 29 - GIFT, 9-10:30am, Bauman Library

Wed., Apr. 30 - School of Religion, 6:15-7:30pm

Thu., May 1 - Knights Officer mtg., 7pm, Bauman

Choir Rehearsal, 7pm, Church

Sun., May 4 - Monthly Food Drive

Children's Liturgy of the Word, 9am Mass

School of Religion First Communion, 9am Mass

STM School First Communion, 2pm, Church

STM School

Linda Crosthwait, Principal

816-942-5581 STMKCSCHOOL.ORG



School Registration

New Families: Please email Jill Brennan for a tour and/or registration info: brennan_jill@stmcyclones.org. Register today! Grades are filling quickly!

School Dates

Thu., Apr. 17 - School dismissed at 12:30pm

Fri., Apr. 18 - No School

Mon., Apr. 21 - No School

Tue., Apr. 22 - Kindergarten Round-up

Wed., Apr. 23 - 8th Grade Service Day
 Spring Band Concert, 6:30pm, Flanagan Hall
 Thu., Apr. 24 - 5th-8th Grade Music Concert, 6:30pm
 Apr. 28-May 2 - 8th Grade Spirit Week
 Thu., May 1 - May Crowning
 Fri., May 2 - Jesus Day, 8am-3pm, More Hall
 Sun., May 4 - School First Communion, 2pm
 Tue., May 6 - 8th Grade Retreat
 Wed., May 7 - 8th Grade Mass & Passing the Light
 Thur., May 8 - 8th Grade Graduation

MOScholars Tax Credit

Maximize your impact on Catholic education in Missouri, at no cost to you. You can redirect up to 50% of your state income tax liability to the Bright Futures Fund, providing vital scholarships to qualifying students in our diocese.

For more information, visit BrightFuturesFund.org and click "Reserve Your MO Tax Credits Here" (linking to the MO State Treasurer's website). Please call Christy at 816-714-2338 with any questions.

ST. THOMAS MORE CHURCH

Easter

EGG HUNT

EASTER SUNDAY, APRIL 20

IMMEDIATELY FOLLOWING 9 AM MASS ON THE ST. THOMAS MORE SCHOOL PLAYGROUNDS

ALL CHILDREN THROUGH AGE 10 WELCOME

SEPARATE EGG HUNT FOR SMALLEST CHILDREN

Parish Office Staff

	Sharon Arnett Liturgy Coordinator x208 sharon@stmkc.com		Bob Sandford Publications & Music Director x212 bob@stmkc.com
	Mary Begnaud Receptionist x201 mary@stmkc.com		Joan Sandford Office Manager x202 joan@stmkc.com
	Scott Dulle Building & Grounds Director dulle_scott@stmcydones.org		Father Paul Sappington In Residence frsappington@smacatholic.org
	Father Justin Hoyer Pastor x204 frjhoye@stmkc.com		Hayley Shaver Evangelization & Discipleship x223 hayley@stmkc.com
	Jyllan Hudson Funeral & Wedding Liturgist jyllan@stmkc.com		Tim Waris Business Manager x218 tim@stmkc.com
	Becky Johnson Finance Coordinator x224 becky@stmkc.com		Father Pius Wesonga, AJ Associate Pastor x203 frpwesonga@stmkc.com
	Peggy Lucas Pastoral Associate/Outreach x 210 peggy@stmkc.com		

Parish Office Hours (until further notice)

Office Hours: M-W 8:45am-3:30pm; T-Th 8:45am-5pm
 F 8:45am-1pm

Finance Ministry Team

Justin Hicks, Chair	Stefanie Bresette
Mark Meierhoffer	Laura Christopherson
Bruce Gregg	

Parishioner volunteers serve for three-year terms.
 Questions? Email FinanceCouncil@stmkc.com.

Diocesan Ombudsman
 816-812-2500

Victim Advocate
 816-392-0011 or victimadvocate@diocesekcsj.org

To register as a member of Saint Thomas More Parish...
 ...go to stmkc.com/registration, contact the parish office or pick up a registration form on the Information table in the church narthex.

Safe Environment Information

The Diocese of Kansas City~Saint Joseph is committed to combatting sexual abuse in the Church. If you are a victim of sexual abuse, or if you *observe or suspect* sexual abuse:

- Call the **MO Child Abuse Hotline**, 1-800-392-3738 (if the victim is currently under the age of 18), or **KS Protection Report Center**, 1-800-922-5330, and
- Contact your **local law enforcement agency** or call 911, and
- After reporting to these civil and law enforcement authorities...if the abuse involves a priest, deacon, employee or volunteer of the Diocese of Kansas City-St. Joseph report suspected abuse to the Diocesan Ombudsman at 816-812-2500.

The diocese has a sincere commitment to providing care and healing resources to victims of sexual abuse and their families. Please contact the Victim Advocate at 816-392-0011 or victimadvocate@diocesekcsj.org.

FOR ADDITIONAL INFORMATION, contact:

Joan Sandford, Parish Safe Environment Coordinator, safety@stmkc.com or 816-942-2492 x202, OR

Tracy Stewart, School Safe Environment Coordinator, stewart_tracy@stmcyclones.org or 816-942-5581.

Mass Intentions

Mon: 4/21	8:15AM Catherine Giarraputo [†]
Tues: 4/22	6:15AM Ed Christophersen 8:15AM Jack & Mary Looney [†]
Wed: 4/23	6:15AM Kenny Benso[†] **8:15AM Barney & Rosemarie Maguire[†]
Thur: 4/24	6:15AM Carol Blum[†] 8:15AM Dec'd members of Charles Palmentere family [†]
Fri: 4/25	8:15AM Bill Waris[†]
Sat: 4/26	4:00PM Mickey Boan Miller [†]
Sun: 4/27	7:30AM Sandy Price[†] 9:00AM Thomas Fahey [†] 11:00AM Our Parishioners

[†] Deceased

****School Mass**

To request a Mass intention, stop by the parish office or call 816-942-2492. Suggested donation per Mass is \$10.

SCRIPTURE READINGS

For the daily readings, visit usccb.org/bible/reading. Have the readings sent to your email each day, hear the readings read to you, or watch a video with a reflection based on the readings.

 <p>TJ BRENNAN - Parishioner 816.394.2224 • HOME • AUTO • BUSINESS • LIFE tjbrennan@cekinsurance.com www.cekinsurance.com</p>	<p>WE APPRECIATE OUR ADVERTISERS!</p>	<p>The Genuine. The Original. OVERHEAD DOOR Overhead Door Company of Kansas City™ A SPACE Company</p>
 <p>SUPPORT OUR PARISH</p>		
 <p>Brady Crawford Insurance & Financial Services 816.333.5853 coveredbycrawford.com Locations in Waldo & Martin City</p> <p>RENTERS HOMEOWNERS CONDO AUTO PET PERSONAL ARTICLES BUSINESS LIFE HEALTH</p>	<p>FREE AD DESIGN with purchase of this space CALL 800-477-4574</p>	<p>SERVING KANSAS CITY SINCE 1927 REPAIR + REPLACE GARAGE DOORS AND OPENERS RESIDENTIAL DOORS FREE ESTIMATES • 816-320-5430 OverheadDoorKansasCity.com</p>
<p>IF YOU LIVE ALONE MDMedAlert!™ As Low As \$19⁹⁵ /mo. ✓ Ambulance ✓ Police/Fire ✓ Family/Friends ✓ GPS & Fall Alert CALL NOW! 800.808.9294 md-medalert.com</p>	<p>SHORT STAFFED? Place an ad here to find new local talent for your business. CALL 800-477-4574</p>	 <p>Office: 913-722-6200 Cell: 913-269-7124 julie@juliestoll.com Julie Stoll State Farm Agent</p>



For ad info. call 1-800-950-9952 • www.4lpi.com

St. Thomas More, Kansas City, MO

C 4C 02-0710



\$500 OFF
Complimentary Consultation 913.681.8300

4851 WEST 134TH STREET • LEAWOOD • KANSAS 66209-7803
913.681.8300 • WWW.JEFFTHOMPSONORTHOD.COM

JEFFREY J. Thompson, D.D.S., M.S. Parishioner

catholicmatch®
Missouri



CatholicMatch.com/MO

WALK-IN CLINIC
for sports injury or fractures
M-F: 9am -11am, 1pm - 3pm. Ages 0 -16
pediatric orthopaedic surgery Associates
5250 W. 94th Terrace, Prairie Village, KS 66207
913-451-0000
www.pedorthokc.com

Like a good neighbor State Farm
State Farm is there.®



13012 Fuller
P.O. Box 230
Grandview, MO 64030

STATE FARM INSURANCE COMPANIES
HOME OFFICES BLOOMINGTON, ILLINOIS

Larry B. Langford,
CLU CHFC

Bus.: 816-761-8711
Res.: 816 217 8112

larry.langford.b5u9@statefarm.com



Tina R. Gaughan
REALTOR®, SRES

RE/MAX®
State Line Real Estate



Direct Line: (913) 312-3630
Mobile: (816) 835-3230
TinaGaughan@gmail.com
TinaGaughan.com
11251 Nall Ave. • Leawood, KS 66211

Each Office Independently Owned and Operated



WILLS & TRUSTS • ESTATE PLANNING

Christopher Gaughan, Parishioner
ESTATE PLANNING ATTORNEY

- * Estate Planning
- * Business Succession
- * Wills & Living Trusts
- * Powers of Attorney
- * Farm & Ranch Planning
- * Special Needs Trusts

CALL FOR A FREE CONSULTATION!



GAUGHAN & CONNEALY
ESTATE PLANNING ATTORNEYS
4400 College Blvd, Suite 190 | Overland Park, KS 66211
(913) 262-2000 | www.MidwestEstatePlan.com

WE'RE HIRING!

AD SALES EXECUTIVES

BE YOURSELF.
BRING YOUR PASSION.
WORK WITH PURPOSE.

- Paid training
- Some travel
- Work-life balance
- Full-Time with benefits
- Serve your community



Contact us at
careers@4lpi.com or
www.4lpi.com/careers

learn.
grow.
soar.

**FORMING MEN AT
THE ROCK**
ROCKHURST HIGH SCHOOL

WWW.ROCKHURSTHS.EDU/ADMISSIONS

**Catholic Family
CREDIT UNION**

Full Service For All Your Needs
816-444-7440
9237 Ward Parkway, Ste 114
www.catholicfamilycu.com
Savings Insured by the NCUA up to \$250,000

PILEGGI PAINTING
Exterior - Interior - Decks - Residential & Commercial
Frank Pileggi - Owner
www.PileggiPainting.com
frank@pileggipainting.com | 913-558-5204

LET'S GROW YOUR BUSINESS

Place Your Ad Here
and Support Our Parish!

CONTACT ME
Jon Becker

jbecker@4LPi.com
(800) 950-9952 x2536

**DOES YOUR NONPROFIT
ORGANIZATION NEED
A NEWSLETTER?**

Engaging, ad-supported
print and digital newsletters
to reach your community.

Visit lpicomunities.com

**OUR COMMUNITY
NEWSLETTER**
OCTOBER EDITION

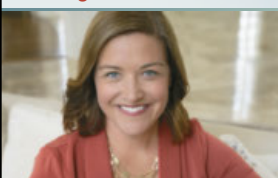


Scan to
contact us!

URGENT CARE
AT HOME

In home evaluations and
treatments helps you skip the
wait and get the care you need,
when and where you need it.

Meghan Macy
FNP-BC, APRN, NE
(816) 223-7638
www.urgentcareathomekc.com



MEDICARE
Let me help you! 30 years experience
816-942-0666 • mboesen@kc.rr.com



Mary Owens Boesen
Parishioner
Life & Health Insurance Sales

CottageCare®
HOUSE CLEANING AT ITS BEST!

For Pricing call (913) 469-0220
or visit cottagecare.com

JD & Jakes
THE BARBER SHOP
(816) 569.2887 (cuts)
13033 Holmes Rd.



SANDTRAP
Bar & Grill

(816) 942-0990 | 13037 Holmes Rd.



For ad info. call 1-800-950-9952 • www.4lpi.com

St. Thomas More, Kansas City, MO

B 4C 02-0710



Buy one Breakfast, Lunch or Dinner Combo meal
and get one of equal or lesser value **FREE**

Limit one coupon per customer per visit. Please present coupon when ordering.

Not valid with any other offer. Expires April 30, 2026

Code 0710

24 Highway McDonald's
11700 East US Highway 24
Independence, MO

Eastland McDonald's
18910 East US Highway 40
Independence, MO

Susquehanna McDonald's
16235 East US Highway 24
Independence, MO

BR Crossing McDonald's
11801 East US Highway 40
Independence, MO

40 Highway McDonald's
920 SW US Highway 40
Blue Springs, MO

North 7 McDonald's
814 NW State Route 7
Blue Springs, MO

Woods Chapel McDonald's
1515 NW Woods Chapel Rd
Blue Springs, MO

South 7 McDonald's
3116 South 7 Highway
Blue Springs, MO

Chouteau McDonald's
4400 N Chouteau Traffic Way
Kansas City, MO

Broadway McDonald's
3741 Broadway Boulevard
Kansas City, MO

Red Bridge McDonald's
11001 Hickman Mills Drive
Kansas City, MO

Blue Ridge McDonald's
5260 Blue Ridge Boulevard
Raytown, MO

REDEEMABLE ONLY AT:

Carpets | Area Rugs | Upholstery
Hardwood Floors | Air Ducts
Tile & Grout | Residential/Commercial

WE CLEAN GREEN! zerorez
the right way to clean

(816) 425-3655
www.zerorezkc.com

Steven Phelps

Better Homes and Gardens REAL ESTATE KANSAS CITY HOMES



Judy Sheaman, ABR

Sales Executive
with 26 Yrs. Experience

Parishioner

Licensed in Kansas & Missouri

Office: 913-981-2827

Cell: 816-304-2888

KC Magazine

"Five Star Real Estate Agent"

for overall customer satisfaction since 2005



KC's Leading Decking &
Andersen Window Supplier

Mike McGlinn
Parishioner

816-331-2211

OwenLumber.com

ALLIED
CONCRETE
PRODUCTS

12800 2nd St. Grandview
816-966-8836
Judy, Pete, & Amparo Furey
Parishioners

RESIDENTIAL
SEWAGE
TREATMENT
COMPANY, INC.

816-966-8885
Kathy Maguire & Tom Fritts
Parishioners

LET'S GROW YOUR BUSINESS
Place Your Ad Here and Support Our Parish!

CONTACT ME Jon Becker

jbecker@4LPi.com • (800) 950-9952 x2536

MCGILLEY
MEMORIAL CHAPELS
SINCE 1899

Funerals | Cremations | Receptions | Celebrations

"Celebrating Lives"

Patrick McGilley | Joe Haster | 816-942-6180 | www.mcgilleystatelinechapel.com

The Madison
SENIOR LIVING



Learn more about life
at The Madison!

Schedule a Tour | (816) 327-1726



Muehlebach Funeral Care & Cremation Services

MUEHLEBACH
FUNERAL CARE

816-444-2060
www.muehlebachchapel.com
"Our Family Dedicated to Serving Yours."

Parishioners:
Steve & Nicole Pierce
Jordan Pierce
STM Class of 2011
Jenny Mertes
Tom Reagan

LINC
Local Investment Commission

Part-time
Child Care Jobs
Now Hiring!

Apply at: kclinc.org/parttimejobs

LINC Caring Communities Sites
North Kansas City - Kansas City Public Schools
Center - Hickman Mills - Grandview



Your financial partner throughout your life.

Matthew Pomianek, AAMS®, Financial Advisor, Parishioner
5000 W 95th St Ste 103
Prairie Village, KS 66207
913-648-6084
matthew.pomianek@edwardjones.com

Member SIPC

Edward Jones
MAKING SENSE OF INVESTING

got crack?
WE GOT YOUR BACK!
CRACKOLOGY™
FOUNDATION REPAIR & WATERPROOFING
Call us! 816-402-2217

WE APPRECIATE OUR
ADVERTISERS!

ACCESS YOUR POTENTIAL

AVILA
UNIVERSITY

Avila.edu/catholic

BURIAL • ENTOMBMENT • CREMATION • TRADITIONAL CEREMONIES • CELEBRATIONS OF LIFE

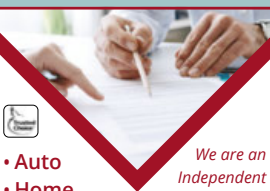
CULLEN
FUNERAL HOME, INC.®



PLAN AHEAD

WE'LL TAKE THE FIRST STEP WITH YOU.

612 W Foxwood Dr
Raymore, MO 64083
(816) 322-5278



- Auto
- Home
- Life
- Commercial

We are an
Independent
Agency With
Over 30 Years
of Experience



NESTEL
INSURANCE AGENCY
"Where Customer Service Counts"

Mary Nestel

816-361-6442

9233 Ward Parkway Ste 124
Kansas City, MO 64114

www.nestelinsurance.com
info@nestelinsurance.com



JOE & MAGGIE TULIPANA

SHAWNEE
13214 W 62ND TERR, SHAWNEE, KS 66216

VILLAGE WEST (INSIDE NEBRASKA FURNITURE MART)
1601 VILLAGE WEST PKWY, KANSAS CITY, KS 66111

WE CATER! 913.268.488Q
catering@blindboxbbq.com

BLIND
BOX
BBQ
@BLINDBOXBBQ



For ad info. call 1-800-950-9952 • www.4lp.com

St. Thomas More, Kansas City, MO

A 4C 02-0710