

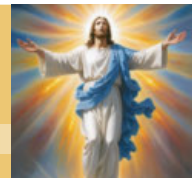


OUR **MISSION** IS TO PROVIDE
A WELCOMING, INCLUSIVE,
AND LOVING COMMUNITY BY
PROCLAIMING AND LIVING GOD'S
WORD THROUGH WORSHIP,
EDUCATION, AND SOCIAL JUSTICE.

SAINT THOMAS MORE PARISH

11822 Holmes Road, Kansas City, Missouri 64131 • stmkc.com

April 27, 2025



BULLETIN ONLINE

this and last week's at stmkc.com

Subscribe at stmkc.com/emailme→



MASSES

WEEKDAY: Mon & Fri 8:15am,
Tues, Wed, Thu 6:15am & 8:15am
First Sat 8:15am

WEEKEND: Sat 4pm, Sun, 7:30am, 9am & 11am

MASS ONLINE CONTINUES

RECONCILIATION

Individual Confessions: by appointment and
Tuesdays and Thursdays, 5-6pm

Saturdays, 3-3:45pm

First Saturdays, 7:15-8am

OUR CLERGY

Father Justin Hoye, Pastor

Father Pius Wesonga, AJ, Associate Pastor

In Residence: Father Paul Sappington

AT THE PARISH OFFICE

Office Hours:

Mon. & Wed. 8:45am-1pm, 2-3:30pm*

Tues. & Thurs. 8:45am-1pm, 2-5pm*

Friday 8:45am-1pm

* lunch hour 1-2pm

Parish Office 816-942-2492

Office directory at stmkc.com and p.9

AT THE SCHOOL OFFICE

Linda Crosthwait Principal

Tracy Stewart Assistant Principal

Office hours: Mon.-Thurs., 8am-3:45pm;

Fri., 8:30am-3:30pm

School Office 816-942-5581

School fax 816-941-2450

School email directory at stmkcschool.org

SCHOOL TOURS: contact Principal Linda Crosthwait at
816-942-5581 or crosthwait_linda@stmcydones.org

SAFE ENVIRONMENT

All employees and volunteers working with
minors are required to:

- Create an account at virtus.org
- Attend a Protecting God's Children
workshop
- Complete a mandated reporter training
- Submit to a background check
- Read the online Policy on Ethics and
Integrity in Ministry

For more Safe Environment information,
including reporting and victim resources,
see page 10.



Whenever we take a step towards Jesus,
we come to realize
that He is already there,
waiting for us with open arms.

POPE FRANCIS 1936-2025

MAY THE SOULS of the FAITHFUL DEPARTED,
THROUGH the MERCY of GOD, REST IN PEACE.

GLPI



IT IS DIVINE MERCY SUNDAY

TRUST IN GOD'S
MERCY



Faithful People of Saint Thomas More,

Pope Francis' unexpected death this week provides us with a moment to thank God for the witness of his life, and to respond more generously to his invitations to live out Jesus' life in more pronounced ways.

It also gives us an opportunity to reflect on the proximity of the Pope to our day to day lives. The Pope names and assigns bishops, the successors to the Apostles. Those bishops then choose seminarians to accept, and decides who to ordain and where to assign these men in the field. This is to say, our prayers for the discernment of the next Pope are important, as it does impact who we receive as shepherds!

Congratulations to our newly baptized from the Easter Vigil - **Athena, Jake, Malcolm and Leo** - and those adults newly confirmed - **Christina, Caroline, Alyce, Steve, Cooper, Daniel, Mara, Henry and Yesenia**. I also want to thank Hayley for her work with the youth being baptized, and the OCIA Team members - Donna, Mary, Trish, Henry and Randy - who have accompanied these individuals since the Fall, and provided prayers, hospitality, witness and logistical support. I am grateful to have worked alongside them, as well as with Father Pius, for our Tuesday sessions.

Thank you to Sharon Arnett and our liturgical ministers, including our volunteers in Art & Environment who did quick-changes for each celebration of Holy Week. A big thank you to Bob Sandford and our musicians who returned for our many offerings.

Next weekend is First Communion Weekend at STM. We'll have First Communion for SOR students at next weekend's 9AM Mass, and a 2PM Mass for our STM School First Communicants. Because of the celebrations, we will have no Eucharistic Exposition/Adoration next Sunday.

Father Justin

From Bishop Johnston

"With sadness and surprise the Catholic Church and the world learned of the unexpected death of Pope Francis early this morning. Having just celebrated the victory of Jesus Christ over sin and death at Easter, I urge Catholics and others to remember Pope Francis in prayer as he completes his journey of faith in the risen Lord. Let us remember with gratitude Pope Francis' consistent admonition that no person be forgotten or written off, that God's mercy is extended to all, and that the Church must continually go to the peripheries of the world to be near all God's children. May Pope Francis, an apostle of God's mercy, now rest in that same mercy and God's everlasting peace."

~ Bishop Johnston

Pope Francis' funeral Mass

Saturday, April 26, 10am in St. Peter's Square

Tune into Vatican News or EWTN for a livestream. Stay tuned for more information on plans for a Memorial Mass to be celebrated by Bishop Johnston this week.

Follow the News

Throughout this period of official Church mourning leading up to the funeral of the Pope, EWTN will offer exclusive programming, including live coverage from the Vatican, prayers and a variety of specials highlighting the life of Pope Francis. Visit ewtn.com for up-to-date news and programming announcements.

Additionally, visit USCCB newsroom and Vatican News for frequent updates.

Gathering Stories

The diocese is gathering stories from people who have met Pope Francis or who have a special devotion to him. Email Ashlie at hand@diocesekcsj.org.

Honoring Pope Francis' Life at STM

- Attend Green Team showing of *We Are All Plastic People Now* - Sun., Apr. 27, 10:15am (See p. 4)
- Attend 8:15am Mass on Wed., Apr. 30, for the repose of the soul of Pope Francis.
- Sign up at stmkc.com to pray with the Vocations crucifix. (See p.3).
- Attend 8:15am Mass on Wed., May 7, to pray for the election of a new pope.
- Contribute to the STM Neighbors in Need fund to assist those in need. (See stmkc.com/stewardship for online giving.)
- Read up on "Pope Francis' writings." (Search for these words in quotes to find the writings.)
- Watch Bishop Johnston's interview at kctv5.com, search "Bishop Johnston."

Come Home to Communion



Daily Masses

Monday, 8:15am
 Tuesday, 6:15 & 8:15am
 Wednesday, 6:15 & 8:15am
 Thursday, 6:15 & 8:15am
 Friday, 8:15am
 First Saturday, 8:15am

Sign Interpreted services: 2nd Sundays at 11am

Masses are recorded daily; find them at stmkc.com or youtube.stmkc.com.

The Light is on for You - Confessions

Confessions are offered in the reconciliation room.

Tuesday, 5-6pm Thursday, 5-6pm
 Saturday, 3-3:45pm First Saturday, 7:15-8am
 and by appointment

Church Hours for Private Prayer

Mon.-Fri., 6am-9pm
 Sat.-Sun., 7am-9pm

Eucharistic Exposition at STM

Sundays, Noon-9pm in the Church

No Eucharistic Exposition on May 4.

Regular time spent with the Lord in Adoration can be life changing!

Pray the Rosary with Others

Sundays, after 9am Mass

Join with the Knights of Columbus in prayer.

Mon.-Fri., after the 8:15am Mass

All are welcome to pray the rosary or the Fatima devotions with others on first Saturdays, after 8:15am Mass.

STM Traveling Vocations Crucifix - Easter Season

The STM Vocations Committee invites parishioners to sign up at stmkc.com to receive a traveling crucifix for a week during the Easter Season. Participants will bring up the gifts of bread and wine at a weekend Mass and receive at that time a crucifix and prayers to use during the week, seeking an increase in vocations to the priesthood and religious life.



Fresh Fire Eucharistic Adoration

Friday, April 25, 7-9pm in the Church

Don't miss the last one of the season! Fresh Fire is an evening of candlelit Eucharistic Adoration with praise and worship music, a personal witness, and prayer teams. Experience the power of Jesus' healing presence!

April Prayer Intentions

Pope Francis: Let us pray that the use of the new technologies will not replace human relationships, will respect the dignity of the person, and will help us face the crises of our times.

Bishop Johnston: For all musicians and those who

Please hold in prayer

CONTACT THE PARISH OFFICE, BULLETIN@STMKC.COM OR 942-2492 X202, TO ADD OR REMOVE NAMES FROM THE PRAYER LIST. IF YOUR NAME IS DROPPED OFF AND YOU ARE IN NEED OF ADDITIONAL PRAYERS FOR HEALING, CONTACT THE PARISH OFFICE.
NAMES APPEAR EVERY OTHER WEEK.

...our family and friends in the military:

Nick Alder	Nathan Butcher	TJ Francik	Jonathan Kennaley	Christopher Yates
Drew Belzer	Logan Elrader-Effertz	Luke Jokerst	Zach Love	

...our parishioners who are sick:

Mary Sue Adams	Bill Cusick	Kathy Lawson	Monica Nelson	JoAnn Walton
Roberta Aguirre	Cricket Hill	Patrick Miller	Carol Turner	Bill Young
Rita Armstrong	Donna Johnson	Linda Neenan		

...our family and friends who are sick:

Tom Bauer	Marie Dooley	Emily Kurek	Noel Mehlo	Peter Szumigala
Emma Beaver	Edward Dulle	Katherine Markes	Carol Shelangouski	Stephan Tafuro
Scott Caron	Chris Frantze	Denise Adams Mehlo	Stephanie Shaver	Pat Wells

...our family and friends who have died:

Frances Howell

teach and tutor others in learning how to play an instrument, to sing, compose, and appreciate music. That they be supported and blessed in their profession and efforts to enrich the world with beauty.

Care & Support

Grief Peer Support Group

1st & 3rd Wed. (May 7), 4-5pm, Bauman Room

Grief is difficult and can be experienced as a result of any kind of loss. In addition to supporting each other, we use various resources to better understand our grief. Peggy Lucas, Pastoral Associate, facilitates these groups. Attend as you are able. For more info, contact her at peggy@stmkc.com or 816-942-2492 x210.

Retrouvaille (Retro-vi)

May 16-18 (Friday-Sunday), Kansas City

Not willing to let go of your marriage? There is hope! Retrouvaille is very different than other marriage programs. Some spouses resist the idea of attending out of concern that they will be required to expose their personal lives and their marital problems. That is not true! And most couples find that this program is the very thing that worked when all else failed.

Retrouvaille begins with an immersion weekend led by three couples. The couples then take part in 12 two-hour follow-up sessions that delve deeper into concepts introduced on the weekend.

For more information, visit helpourmarriage.org.

man health. Refreshments will be served. Questions? Contact Peggy Lucas at peggy@stmkc.com.

Men of STM Charity Golf Tournament

Friday, May 2; Noon Check-in, 1pm Shotgun Start

Enjoy the day at Eagles Landing Golf Course, 4200 Bong Ave., while raising funds for Catholic education at STM. BB's Barbeque is on the menu for dinner at the course, immediately following the event. Cost is \$200 for hole sponsorship, \$140/player, \$20 for dinner only. Mulligans are \$5 each or 5 for \$20. All players receive a shirt, 18 holes of golf with a cart, practice balls, drinks, and dinner. Proceeds will benefit STM School. To register, contact Liam at LiamPGA@sbcglobal.net or 913-558-9835.

Food Drive Next Weekend

May 3-4, in the Narthex

Our monthly food drive helps people who are struggling to put food on their tables and is distributed by Seton Center and our Red Bridge food pantry.

Please bring the following items for Seton Center: canned tuna, meats, low-sodium soups, vegetables and fruit; pancake mix & syrup, sugar, dry milk, boxed meals, pasta & sauce, peanut butter & jelly, rice, jello, condiments, white beans, laundry soap, toiletry items, and paper goods.

To make a monetary contribution to Seton Center, visit setonkc.org and click on the donate tab.

Red Bridge Pantry - Last month, 18 families with 61 individuals were served this month, all because of your generous donations. In addition, 10 families of 15 adults and 28 kids at Red Bridge Elementary were served over spring break. Thank you! We are now low on:

- dish soap (out!), toilet paper and paper towels
- boxed dinners (Hamburger Helper type), pancake syrup
- canned: pastas, chicken, fruit (especially pineapple and fruit cocktail, not applesauce), green beans and mixed veggies

Thank you in advance for your support next month!

St. Joseph Medical Center Book & Gift Fair

May 6 & 7 (Tue., 7:30am-4pm; Wed., 7:30am-3pm)

St. Joseph's Volunteer Services is hosting this popular two-day event in the lower level of the atrium. Net proceeds will be donated to Catholic Charities or various other charities with similar mission and values. Come to St. Joseph's Medical Center at 1000 Carondelet Dr., KCMO 64114 to find some very good deals while supporting worthwhile causes! Call Fred O'Dwyer at 816-812-1198 for more details.

One Family RESTORED IN CHRIST, EQUIPPED FOR MISSION



Using Resources Wisely

Aligning God's gifts for the Church's life and mission

Knights of Columbus Texas Hold 'Em Tournament

Friday, April 25, 7pm in More Hall



Registration at 7pm; play begins at 7:30pm.

ALL are welcome. Proceeds benefit STM School Computer Fund. Cash Prizes: 1st \$300 - 2nd \$200 - 3rd \$100. Buy-In: \$30/pre-registered, \$35/walk-in.

Green Team Film: "We Are All Plastic People Now"

Sunday, April 27, 10:15-11:15am, More Hall

The Green Team will show this timely and provocative documentary with a discussion after. This groundbreaking film is an Emmy winning documentary that reveals the hidden story of plastic and its effects on hu-

Encountering THE SEASON

Easter for the Family

Second Sunday of Easter (C)

Acts 5:12–16
Revelation 1:9–11a, 12–13, 17–19
John 20:19–31

Ponder & Pray:

Reflect on the justice you think others deserve vs the mercy you need. How does this shape your understanding of God's love?

How can you live out Jesus' ultimate act of mercy in your interactions with others?

Mercy requires trust in God's love. How can you deepen your trust in his mercy, especially in moments of doubt or pain?

“ *These [signs of Jesus] are written that you may come to believe that Jesus is the Christ, the Son of God, and that through this belief you may have life in his name.* ”
—John 20:31

Radical Mercy

Divine Mercy Sunday reveals the scandalous depth of God's love and forgiveness. Justice demands that we receive what we deserve, but mercy offers something far greater—the love and grace we desperately need. The story of Rudolf Höss, the commandant of Auschwitz, illustrates the transforming power of God's mercy. Responsible for millions of deaths, Höss lived a life seemingly beyond redemption. Yet in his final days, he sought confession, received absolution, and encountered God's mercy through the sacraments.

This story challenges us to reflect on the radical nature of Divine Mercy. If God's love could reach even someone with sins like those Höss committed, how much more can it transform our lives? Mercy is not about excusing sin but about opening our hearts to God's grace, allowing him to heal our



deepest wounds and break through our hardest defenses.

On this Divine Mercy Sunday, ask yourself, *Are there parts of my life where I feel unworthy of forgiveness?* Remember, God's mercy knows

no limits. Trust in his love, seek reconciliation through confession, and allow his mercy to flow through you to others. The choice before us is clear: Will we accept the justice we deserve or the mercy we need?

ascensionpress.com • 1-800-376-0520  ASCENSION

SAVE THE DATE

Vacation Bible School

Registration opens in
May! ✨



WHERE: STM PARISH

WHEN: JUNE 23- 27. 9AM-NOON

WHO: CHILDREN AGES 6-11

MIDDLE/HIGH SCHOOLERS & PARENT VOLUNTEERS

NEEDED! INTERESTED VOLUNTEERS CONTACT

HAYLEY AT HAYLEY@STMKC.COM

FOOD WASTE AND WHY IT MATTERS



“Living our vocation to be protectors of God’s handiwork is essential to a life of virtue; it is not an optional or secondary aspect of our Christian experience.”

**Pope Francis, ENCYCLICAL LETTER
LAUDATO SI’ ON CARE FOR OUR COMMON HOME**



THE SCOPE OF THE FOOD WASTE PROBLEM

HOW MUCH FOOD DO WE WASTE?

As a country we are throwing away enough food waste to fill Arrowhead Stadium every day. This adds up to about 35% of the total U.S. food supply.

WHAT HAPPENS WHEN OUR FOOD WASTE GOES IN THE REGULAR TRASH?

It goes into landfills along with all the other trash. That banana peel, moldy cheese, and left-over burrito that we throw in the regular trash hide a dirty secret. Since organic food waste is deprived of oxygen and light in a landfill, it gives off methane gas as it decomposes. Methane is a greenhouse gas which is 85 times more potent than CO₂ and is a large contributor to the warming of our planet. The EPA estimates that 58% of the methane released into the atmosphere from landfills comes from food waste.



HOW COMPOSTING CAN HELP SOLVE THE FOOD WASTE PROBLEM

While a number of factors contribute to the large amount of food waste, from how food is raised, to how it is marketed, bought, and stored, many are out of our immediate individual control. However, composting our own food scraps is something we can do as individuals. Here are just a few advantages that composting provides:

- Reduces the need for new landfills. Food waste comprises about 24% of municipal solid waste in our landfills.
- Improves our soil. Instead of producing methane in a landfill, composted food scraps become rich compost that allows food to be grown with fewer chemical fertilizers and pesticides.
- Improves water quality. Compost helps the soil retain water more efficiently minimizing runoff that contaminates our waterways and contributes to land erosion.



GREEN TEAM

*Tending our call
to stewardship
of the Earth*

NEXT MONTH

the STM Green team will be doing another bulletin feature page with information on how most of us can do some form of composting that fits our individual circumstances.

Green Team Tip

Spring bird migration is underway. According to Cornell Lab of Ornithology, during peak migration, more than one billion birds may be on the move during a single night. It is also a very dangerous time for birds. They can become disoriented by city lights and collide with windows. On one night in 2023, nearly 1000 birds died flying into a single building along Chicago's waterfront.

To help keep birds safe, turn out nonessential lighting in your home and/or business (11pm-6am), or draw curtains to keep light inside. Add shields to external lighting to direct lighting downward and out of the skies. Taking these steps from February 15 - June 15 will save most birds during migration.

During the day, you can help stop bird collisions into glass windows by applying window treatments every two inches apart to break up reflections of the sky or trees. Owners of the skyscraper in Chicago applied simple white dots to the windows and reduced bird collisions by 95%.

March Financials

Regular - \$271,322.54	Plate - \$4,002.60
Facilities - \$3,015.00	
Education Fund - \$605.00	School - \$811.17
Catholic Charities Emergency Assistance - \$5,172.00	
Catholic Relief Service	

Thank you for your continued contributions to STM!



SPRED Class

Monday, April 28, 6:30-8:30pm, More Hall

An adult group for the developmentally delayed meets about every other week to share their faith. Questions? Email Becky at bturner727@yahoo.com.

GIFT: Growing in Faith Together

Tuesdays, 9-10:30am, Bauman Library

Women gather each week to break open the Sunday readings. All are welcome to join in! Questions? Email Becky at bturner727@yahoo.com.

School of Religion (SOR)

Wednesdays, 6:15-7:30pm, More Hall A

SOR provides catechesis for grade school children (1st-8th) who do not attend Catholic school. Questions? Email Susan at aquiel2000@yahoo.com.

Carlo Acutis: Roadmap to Reality

In theaters April 27-29 (Sunday-Tuesday) only

In a world losing itself to screens, teenage mystic Carlo Acutis saw beyond the social media-addicted society we live in and offered an answer...if we're willing to listen.

Mass and Tour of St. Mary's Home for Mothers

Wednesday, April 30, 9:30am

As part of the Jubilee Year Pilgrims of Hope, the Faith in Action Team is coordinating a trip to St. Mary's Home for Mothers. We will attend Mass at 9:30am followed by a tour of the facility. Please RSVP to Peggy Lucas **by Monday, April 28** at peggy@stmkc.com.

St. Mary's Home for Mothers provides emotional, material and spiritual services for women in the KC metro area who are pregnant and homeless. It is one of the organizations we are collecting money for through our \$20 for Lent effort. For those who are interested, we can carpool to St. Mary's Home for Mothers which is located near Liberty, MO. Please let Peggy know if you would like to carpool when you RSVP.

Ignatian Weekend: Becoming Pilgrims of Hope

Saturday, May 3, 9am-4pm, Rockhurst University

Join in a reflection on Becoming Pilgrims of Hope. The day will end with Mass in the Mabee Chapel at Rockhurst University at 3pm. Visit ignatiancenterkc.org/ and click on "Events" for more information or to register.

Children's Liturgy of the Word (CLOW)

May 4, at 9am Mass

Children through 2nd grade are invited to participate in CLOW on 1st & 3rd Sundays in May. After the opening prayer, children are dismissed to hear the readings on their level. They rejoin their families after the homily. Questions? Contact Joan Sandford, 816-942-2492 x202 or joan@stmkc.com.

Parish Calendar of Events

Fri., Apr. 25 - Respect Life Lunch for 8th grade

Texas Hold 'Em, 7pm, More Hall

Fresh Fire, 7-9pm, Church

Sun., Apr. 27 - Divine Mercy Sunday

Green Team Film, 10:15-11:15am, More Hall

Guatemala Traveler mtg., 6-7:30pm, More Hall

Mon., Apr. 28 - Day of Prayer in Atonement for those harmed by sexual abuse

SPRED, 6:30-8:30pm, B/D

Living Waters, 7-9:30pm, Church

Tue., Apr. 29 - GIFT, 9-10:30am, Bauman Library

Wed., Apr. 30 - School of Religion, 6:15-7:30pm

Thu., May 1 - Knights Officer mtg., 7pm, Bauman
 Choir Rehearsal, 7pm, Church
 Sun., May 4 - Monthly Food Drive
 Children's Liturgy of the Word, 9am Mass
 School of Religion First Communion, 9am Mass
 STM School First Communion, 2pm, Church
 Mon., May 5 - Living Waters, 7-9:30pm, Church
 Tue., May 6 - GIFT, 9-10:30am, Bauman Library
 Wed., May 7 - Grief Peer Support, 4-5pm, Bauman
 Thu., May 8 - STM School Graduation, 5:30pm, Church
 Choir Rehearsal, 7pm, Church
 Knights of Columbus mtg., 7:15pm, More Hall
 Sun., May 11 - Mother's Day
 World Day of Prayer for Vocations

STM School

Linda Crosthwait, Principal
 816-942-5581 STMKSCHOOL.ORG



School Registration

New Families: Please email Jill Brennan for a tour and/or registration info: brennan_jill@stmcyclones.org. Register today! Grades are filling quickly!

School Dates

Apr. 28-May 2 - 8th Grade Spirit Week
 Thu., May 1 - May Crowning
 Fri., May 2 - Jesus Day, 8am-3pm, More Hall
 Sun., May 4 - School First Communion, 2pm
 Tue., May 6 - 8th Grade Retreat
 Wed., May 7 - 8th Grade Mass & Passing the Light
 Thur., May 8 - 8th Grade Graduation

Upcoming Dine Outs!

Tuesday, April 29, at Dos de Oros! Celebrate a Tuesday and support STM School!

Friday, May 2, at Red Bridge Sonic! Students will be car hops for an evening!

MOScholars Tax Credit

Maximize your impact on Catholic education in Missouri, at no cost to you. You can redirect up to 50% of your state income tax liability to the Bright Futures Fund, providing vital scholarships to qualifying students in our diocese.

For more information, visit BrightFuturesFund.org and click "Reserve Your MO Tax Credits Here" (linking to the MO State Treasurer's website). Please call Christy at 816-714-2338 with any questions.

Parish Office Staff

	Sharon Arnett Liturgy Coordinator x208 sharon@stmkc.com		Bob Sandford Publications & Music Director x212 bob@stmkc.com
	Mary Begnaud Receptionist x201 mary@stmkc.com		Joan Sandford Office Manager x202 joan@stmkc.com
	Scott Dulle Building & Grounds Director dulle_scott@stmcyclones.org		Father Paul Sappington In Residence frsappington@smacatholic.org
	Father Justin Hoyer Pastor x204 frjhoye@stmkc.com		Hayley Shaver Evangelization & Discipleship x223 hayley@stmkc.com
	Jyllan Hudson Funeral & Wedding Liturgist jyllan@stmkc.com		Tim Waris Business Manager x218 tim@stmkc.com
	Becky Johnson Finance Coordinator x224 becky@stmkc.com		Father Pius Wesonga, AJ Associate Pastor x203 frpwesonga@stmkc.com
	Peggy Lucas Pastoral Associate/Outreach x 210 peggy@stmkc.com		

Parish Office Hours (until further notice)

Office Hours: M-W 8:45am-3:30pm; T-Th 8:45am-5pm
 F 8:45am-1pm

Finance Ministry Team

Justin Hicks, Chair
 Mark Meierhoffer
 Bruce Gregg
 Stefanie Bresette
 Laura Christopherson
Parishioner volunteers serve for three-year terms.
 Questions? Email FinanceCouncil@stmkc.com.

Diocesan Ombudsman
 816-812-2500

Victim Advocate
 816-392-0011 or victimadvocate@diocesekcsj.org

To register as a member of Saint Thomas More Parish...

...go to stmkc.com/registration, contact the parish office or pick up a registration form on the Information table in the church narthex.

Safe Environment Information

The Diocese of Kansas City~Saint Joseph is committed to combatting sexual abuse in the Church. If you are a victim of sexual abuse, or if you *observe or suspect* sexual abuse:

- Call the **MO Child Abuse Hotline**, 1-800-392-3738 (if the victim is currently under the age of 18), or **KS Protection Report Center**, 1-800-922-5330, and
- Contact your **local law enforcement agency** or call 911, and
- After reporting to these civil and law enforcement authorities...if the abuse involves a priest, deacon, employee or volunteer of the Diocese of Kansas City-St. Joseph report suspected abuse to the Diocesan Ombudsman at 816-812-2500.

The diocese has a sincere commitment to providing care and healing resources to victims of sexual abuse and their families. Please contact the Victim Advocate at 816-392-0011 or victimadvocate@diocesekcsj.org.

FOR ADDITIONAL INFORMATION, contact:

Joan Sandford, Parish Safe Environment Coordinator, safety@stmkc.com or 816-942-2492 x202, OR

Tracy Stewart, School Safe Environment Coordinator, stewart_tracy@stmcyclones.org or 816-942-5581.

Mass Intentions

Mon:	8:15AM Virginia Gioia [†]
4/28	
Tues:	6:15AM Claire Bolton[†]
4/29	8:15AM Mary Elizabeth Heiman [†]
Wed:	6:15AM Kris Sackuvich[†]
4/30	**8:15AM Mike Rhoades[†]
Thur:	6:15AM Michelle Buechter
5/1	8:15AM Barney & Rosemarie Maguire [†]
Fri:	8:15AM Pat, Andy & LaVonne Kleiin[†]
5/2	
Sat:	8:15AM Mike & Frances Vittorino [†]
5/3	4:00PM Rick Saucedo[†]
Sun:	7:30AM Mary Kate Hughes[†]
5/4	9:00AM Our Parishioners
	11:00AM Susan Smith[†]

[†] Deceased

****School Mass**

To request a Mass intention, stop by the parish office or call 816-942-2492. Suggested donation per Mass is \$10.

SCRIPTURE READINGS

For the daily readings, visit usccb.org/bible/reading. Have the readings sent to your email each day, hear the readings read to you, or watch a video with a reflection based on the readings.

 <p>TJ BRENNAN - Parishioner 816.394.2224 • HOME • AUTO • BUSINESS • LIFE tjbrennan@cekinsurance.com www.cekinsurance.com</p>	<p>WE APPRECIATE OUR ADVERTISERS!</p>	<p>The Genuine. The Original.</p>  <p>Overhead Door Company of Kansas City™ A SPACE Company</p>
 <p>SUPPORT OUR PARISH</p>		 
 <p>Brady Crawford Insurance & Financial Services 816.333.5853 coveredbycrawford.com Locations in Waldo & Martin City</p> <p>RENTERS HOMEOWNERS CONDO AUTO PET PERSONAL ARTICLES BUSINESS LIFE HEALTH</p>	<p>FREE AD DESIGN with purchase of this space CALL 800-477-4574</p>	<p>SERVING KANSAS CITY SINCE 1927 REPAIR + REPLACE GARAGE DOORS AND OPENERS RESIDENTIAL DOORS FREE ESTIMATES • 816-320-5430 OverheadDoorKansasCity.com</p>
<p>IF YOU LIVE ALONE MDMedAlert!™ As Low As \$19⁹⁵ /mo. ✓ Ambulance ✓ Police/Fire ✓ Family/Friends ✓ GPS & Fall Alert CALL NOW! 800.808.9294 md-medalert.com</p>	<p>SHORT STAFFED? Place an ad here to find new local talent for your business. CALL 800-477-4574</p>	 <p>Office: 913-722-6200 Cell: 913-269-7124 julie@juliestoll.com</p> <p>Julie Stoll State Farm Agent</p>



For ad info. call 1-800-950-9952 • www.4lpi.com

St. Thomas More, Kansas City, MO

C 4C 02-0710



\$500 OFF
Complimentary Consultation 913.681.8300

4851 WEST 134TH STREET • LEAWOOD • KANSAS 66209-7803
913.681.8300 • WWW.JEFFTHOMPSONORTHOD.COM

JEFFREY J. Thompson, D.D.S., M.S. Parishioner

catholicmatch®
Missouri



CatholicMatch.com/MO



WALK-IN CLINIC
for sports injury or fractures

M-F: 9am -11am, 1pm - 3pm. Ages 0 -16

**pediatric orthopaedic
surgery Associates**

5250 W. 94th Terrace, Prairie Village, KS 66207

913-451-0000

www.pedorthokc.com

Like a good neighbor State Farm
State Farm is there.®



13012 Fuller
P.O. Box 230
Grandview, MO 64030

STATE FARM INSURANCE COMPANIES
HOME OFFICES BLOOMINGTON, ILLINOIS

Larry B. Langford,
CLU CHFC

Bus.: 816-761-8711
Res.: 816 217 8112

larry.langford.b5u9@statefarm.com



RE/MAX®

State Line Real Estate



Tina R. Gaughan
REALTOR®, SRES

Direct Line: (913) 312-3630

Mobile: (816) 835-3230

TinaGaughan@gmail.com

TinaGaughan.com

11251 Nall Ave. • Leawood, KS 66211

Each Office Independently Owned and Operated



WILLS & TRUSTS • ESTATE PLANNING

Christopher Gaughan, Parishioner
ESTATE PLANNING ATTORNEY

- * Estate Planning
- * Business Succession
- * Wills & Living Trusts
- * Powers of Attorney
- * Farm & Ranch Planning
- * Special Needs Trusts

CALL FOR A FREE CONSULTATION!

GAUGHAN & CONNEALY
ESTATE PLANNING ATTORNEYS
4400 College Blvd, Suite 190 | Overland Park, KS 66211
(913) 262-2000 | www.MidwestEstatePlan.com



WE'RE HIRING!
AD SALES EXECUTIVES
BE YOURSELF.
BRING YOUR PASSION.
WORK WITH PURPOSE.

- Paid training
- Some travel
- Work-life balance
- Full-Time with benefits
- Serve your community



Contact us at
careers@4lpi.com or
www.4lpi.com/careers

**learn.
grow.
soar.**

**FORMING MEN AT
THE ROCK**
ROCKHURST HIGH SCHOOL

WWW.ROCKHURSTHS.EDU/ADMISSIONS



**Catholic Family
CREDIT UNION**

Full Service For All Your Needs
816-444-7440

9237 Ward Parkway, Ste 114

www.catholicfamilycu.com

Savings Insured by the NCUA up to \$250,000



PILEGGI PAINTING

Exterior - Interior - Decks - Residential & Commercial

Frank Pileggi - Owner

www.PileggiPainting.com

frank@pileggipainting.com | 913-558-5204

LET'S GROW YOUR BUSINESS

Place Your Ad Here
and Support Our Parish!

CONTACT ME
Jon Becker

jbecker@4LPi.com
(800) 950-9952 x2536

**DOES YOUR NONPROFIT
ORGANIZATION NEED
A NEWSLETTER?**

Engaging, ad-supported
print and digital newsletters
to reach your community.

Visit lpicomunities.com

**OUR COMMUNITY
NEWSLETTER**
OCTOBER EDITION



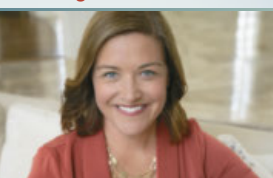
Scan to
contact us!



URGENT CARE
AT HOME

In home evaluations and
treatments helps you skip the
wait and get the care you need,
when and where you need it.

Meghan Macy
FNP-BC, APRN, NE
(816) 223-7638
www.urgentcareathomekc.com



Mary Owens Boesen
Parishioner
Life & Health Insurance Sales

MEDICARE

Let me help you! 30 years experience

816-942-0666 • mboesen@kc.rr.com



CottageCare®
HOUSE CLEANING AT ITS BEST!

For Pricing call (913) 469-0220
or visit cottagecare.com

JD & Jakes
THE BARBER SHOP

(816) 569.2887 (cuts)
13033 Holmes Rd.



(816) 942-0990 | 13037 Holmes Rd.



For ad info. call 1-800-950-9952 • www.4lpi.com

St. Thomas More, Kansas City, MO

B 4C 02-0710



Buy one Breakfast, Lunch or Dinner Combo meal
and get one of equal or lesser value **FREE**

Limit one coupon per customer per visit. Please present coupon when ordering.

Not valid with any other offer. Expires April 30, 2026

Code 0710

24 Highway McDonald's
11700 East US Highway 24
Independence, MO

Eastland McDonald's
18910 East US Highway 40
Independence, MO

Susquehanna McDonald's
16235 East US Highway 24
Independence, MO

BR Crossing McDonald's
11801 East US Highway 40
Independence, MO

40 Highway McDonald's
920 SW US Highway 40
Blue Springs, MO

North 7 McDonald's
814 NW State Route 7
Blue Springs, MO

Woods Chapel McDonald's
1515 NW Woods Chapel Rd
Blue Springs, MO

South 7 McDonald's
3116 South 7 Highway
Blue Springs, MO

Chouteau McDonald's
4400 N Chouteau Traffic Way
Kansas City, MO

Broadway McDonald's
3741 Broadway Boulevard
Kansas City, MO

Red Bridge McDonald's
11001 Hickman Mills Drive
Kansas City, MO

Blue Ridge McDonald's
5260 Blue Ridge Boulevard
Raytown, MO

REDEEMABLE ONLY AT:

Carpets | Area Rugs | Upholstery
Hardwood Floors | Air Ducts
Tile & Grout | Residential/Commercial

WE CLEAN GREEN! zerorez
the right way to clean

(816) 425-3655
www.zerorezkc.com

Steven Phelps

Better Homes and Gardens
REAL ESTATE KANSAS CITY HOMES



Judy Sheaman, ABR

Sales Executive
with 26 Yrs. Experience

Parishioner

Licensed in Kansas & Missouri

Office: 913-981-2827
Cell: 816-304-2888
KC Magazine

"Five Star Real Estate Agent"
for overall customer satisfaction since 2005



KC's Leading Decking &
Andersen Window Supplier

Mike McGlinn
Parishioner

816-331-2211

OwenLumber.com

LET'S GROW YOUR BUSINESS

Place Your Ad Here and Support Our Parish!

CONTACT ME Jon Becker

jbecker@4LPi.com • (800) 950-9952 x2536

ALLIED
CONCRETE
PRODUCTS
12800 2nd St. Grandview
816-966-8836
Judy, Pete, & Amparo Furey
Parishioners

RESIDENTIAL
SEWAGE
TREATMENT
COMPANY, INC.
12800 2nd St. Grandview
816-966-8885
Kathy Maguire & Tom Fritts
Parishioners

MCGILLEY
MEMORIAL CHAPELS
SINCE 1899

Funerals | Cremations | Receptions | Celebrations

"Celebrating Lives"

Patrick McGilley | Joe Haster | 816-942-6180 | www.mcgilleystatelinechapel.com

The Madison
SENIOR LIVING



Learn more about life
at The Madison!

Schedule a Tour | (816) 327-1726



Muehlebach Funeral Care
& Cremation Services

MUEHLEBACH
FUNERAL CARE

816-444-2060
www.muehlebachchapel.com
"Our Family Dedicated to Serving Yours."

Parishioners:
Steve & Nicole Pierce
Jordan Pierce
STM Class of 2011
Jenny Mertes
Tom Reagan

LINC
Local Investment Commission

Part-time
Child Care Jobs
Now Hiring!

Apply at: kclinc.org/parttimejobs

LINC Caring Communities Sites
North Kansas City - Kansas City Public Schools
Center - Hickman Mills - Grandview



Your financial partner throughout your life.

Matthew Pomianek, AAMS®, Financial Advisor, Parishioner
5000 W 95th St Ste 103
Prairie Village, KS 66207
913-648-6084
matthew.pomianek@edwardjones.com

Member SIPC

Edward Jones
MAKING SENSE OF INVESTING

got crack?
WE GOT YOUR BACK!
CRACKOLOGY™
FOUNDATION REPAIR & WATERPROOFING
Call us! 816-402-2217

WE APPRECIATE OUR
ADVERTISERS!

ACCESS YOUR POTENTIAL

AVILA
UNIVERSITY

Avila.edu/catholic

BURIAL • ENTOMBMENT • CREMATION • TRADITIONAL CEREMONIES • CELEBRATIONS OF LIFE

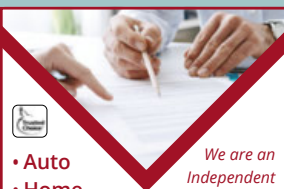
CULLEN
FUNERAL HOME, INC.®



PLAN AHEAD

WE'LL TAKE THE FIRST STEP WITH YOU.

612 W Foxwood Dr
Raymore, MO 64083
(816) 322-5278



- Auto
- Home
- Life
- Commercial

We are an
Independent
Agency With
Over 30 Years
of Experience



NESTEL
INSURANCE AGENCY
"Where Customer Service Counts"

Mary Nestel
816-361-6442

9233 Ward Parkway Ste 124
Kansas City, MO 64114

www.nestelinsurance.com
info@nestelinsurance.com



JOE & MAGGIE TULIPANA

SHAWNEE
13214 W 62ND TERR, SHAWNEE, KS 66216

VILLAGE WEST (INSIDE NEBRASKA FURNITURE MART)
1601 VILLAGE WEST PKWY, KANSAS CITY, KS 66111

WE CATER! 913.268.488Q
catering@blindboxbbq.com

BLIND
BOX
BBQ

BLINDBOXBBQ.COM



For ad info. call 1-800-950-9952 • www.4lp.com

St. Thomas More, Kansas City, MO

A 4C 02-0710